

FR Configurator2 Installation Manual

1. Compatible Operating System

This software is compatible with the following English operating system (OS).

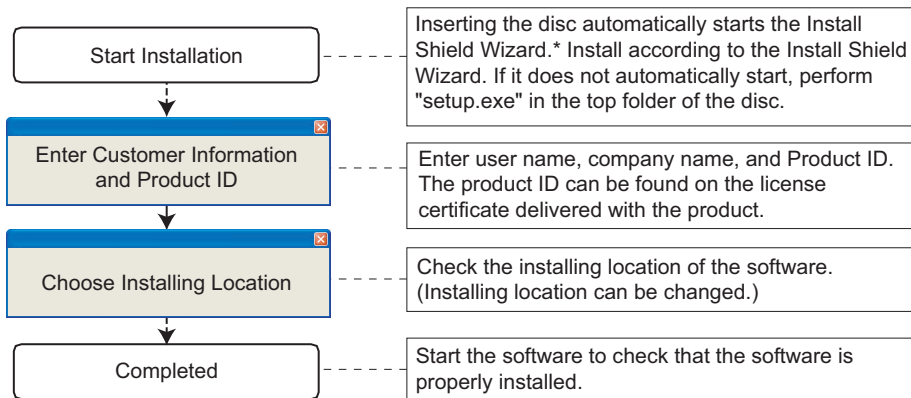
- Microsoft® Windows® 10 (32-bit Edition and 64-bit Edition)
- Microsoft® Windows® 10 IoT Enterprise (64-bit Edition)
- Microsoft® Windows® 8.1 (32-bit Edition and 64-bit Edition) *1
- Microsoft® Windows® 7 (32-bit Edition and 64-bit Edition)

*1 The operating system to which Monthly Rollup released in April 2014 has been installed is supported.

2. Installation/Uninstallation

Log in as a user with administrator authority, and start the installation. Install this software in accordance with the following procedure. In an operation system with antivirus / security software, a warning may appear when installing FR Configurator2. If a warning appears, verify the installation of FR Configurator2 according to the setting procedure of your antivirus/security software.

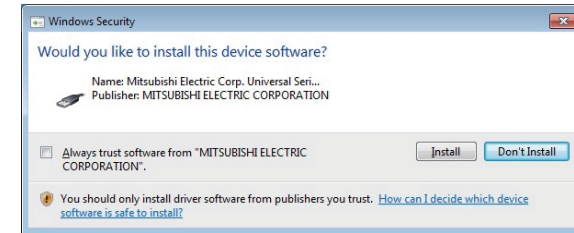
(1) Installation procedure



* When installing to Windows Vista and Windows 7, "AutoPlay" window may appear. Select [Run setup.exe] to continue the installation.



- If the following dialog box appears during installation, select [Install] and continue installation.



Screen when Microsoft® Windows® 7 Professional is used

- When .NET Framework (version 3.5, 3.0, or 2.0) is disabled, the installation is not completed. Enable .NET Framework (version 3.5, 3.0, or 2.0) and try the installation again.

(2) Uninstallation procedure

Open the Control Panel by selecting "Start", and then "Control Panel". Select "Uninstall a program" to display the "Programs and Features" window. Select a program to be uninstalled on the "Programs and Features" window, and delete the program.

For the detailed installation procedure, refer to a software manual on this disc.

3. Manual

- (1) The manual of this software is stored on the disc.
To refer to the manual (PDF data), cancel the InstallShield Wizard once, then display the contents of the disc using Explorer etc., and open "ib0600516eng*.pdf" located in the "manual" folder.
* represents an alphabet indicating version.
- (2) Adobe® Reader® is necessary to read the manual (PDF data) on the disc.

Microsoft, Windows, Microsoft Windows XP, Microsoft Windows Vista, Microsoft Windows 7, Microsoft Windows 8, Microsoft Windows 8.1 and Microsoft Windows 10 are registered trademarks of Microsoft Corporation in the United States and/or other countries. Adobe and Reader are registered trademarks of Adobe Systems Incorporated. Other company and product names herein are the trademarks and registered trademarks of their respective owners.

FR Configurator SW3

(FR-SW3-SETUP-WE) Installation Manual

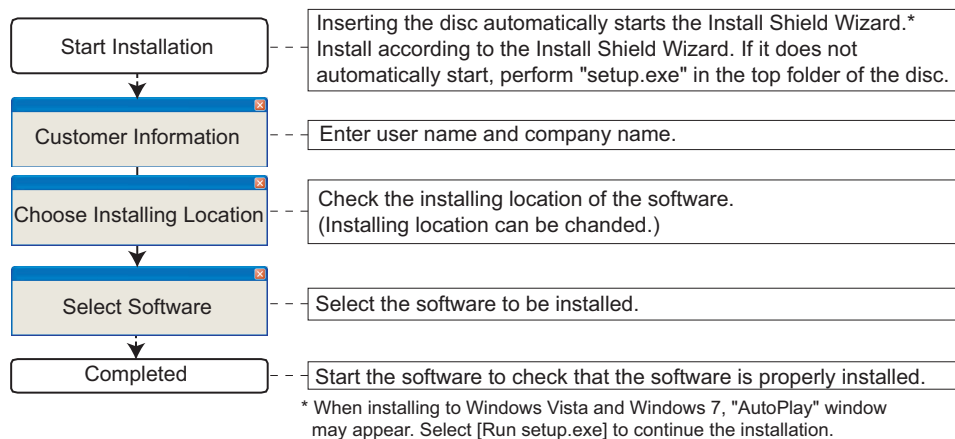
1. Compatible Operating System

This software is compatible with the following English operating system (OS).

- Microsoft® Windows® 10 (32-bit Edition and 64-bit Edition)
- Microsoft® Windows® 8.1 (32-bit Edition and 64-bit Edition)
- Microsoft® Windows® 8 (32-bit Edition and 64-bit Edition)
- Microsoft® Windows® 7 (32-bit Edition and 64-bit Edition)
- Microsoft® Windows Vista® (32-bit Edition)
- Microsoft® Windows® XP Professional SP3 or later (32-bit Edition)
- Microsoft® Windows® XP Home Edition SP3 or later
- Microsoft® Windows® 2000 Professional SP4 or later

2. Installation/Uninstallation

- "FR Configurator SW3" is stored on the disc. Display the contents of the disc using Explorer etc., open the "SW3" folder, and execute "setup.exe". The FR Configurator SW3 will be installed from the SW3 setup wizard.



- The uninstallation procedure is the same as that for FR Configurator2. Refer to page 2/4.

VFD Setup Software SW1

(FR-SW1-SETUP-WE) Installation Manual

1. Compatible Operating System

This software is compatible with the following English operating system (OS).

- Microsoft® Windows® XP Professional SP3 or later (32-bit Edition)
- Microsoft® Windows® XP Home Edition SP3 or later
- Microsoft® Windows® 2000 Professional SP4 or later

2. Installation/Uninstallation

- The installation procedure is the same as that for FR Configurator SW3. When installing, select the Inverter Setup SW1. Refer to page 3/4 .
- Same uninstallation procedure as the FR Configurator2. Refer to page 2/4.

NOTE

- If VFD Setup Software (FR-SW1-SETUP-WE) of an older version is installed after the installation of the FR Configurator SW3, FR Configurator SW3 does not function. In this case, please uninstall FR Configurator SW3, and then install FR Configurator SW3 again.
- In an operation system with antivirus/security software, a warning may appear when installing FR Configurator. If a warning appears, verify the installation of FR Configurator according to the setting procedure of your antivirus/security software.