

Installation method of the MELSOFT MX MESInterface

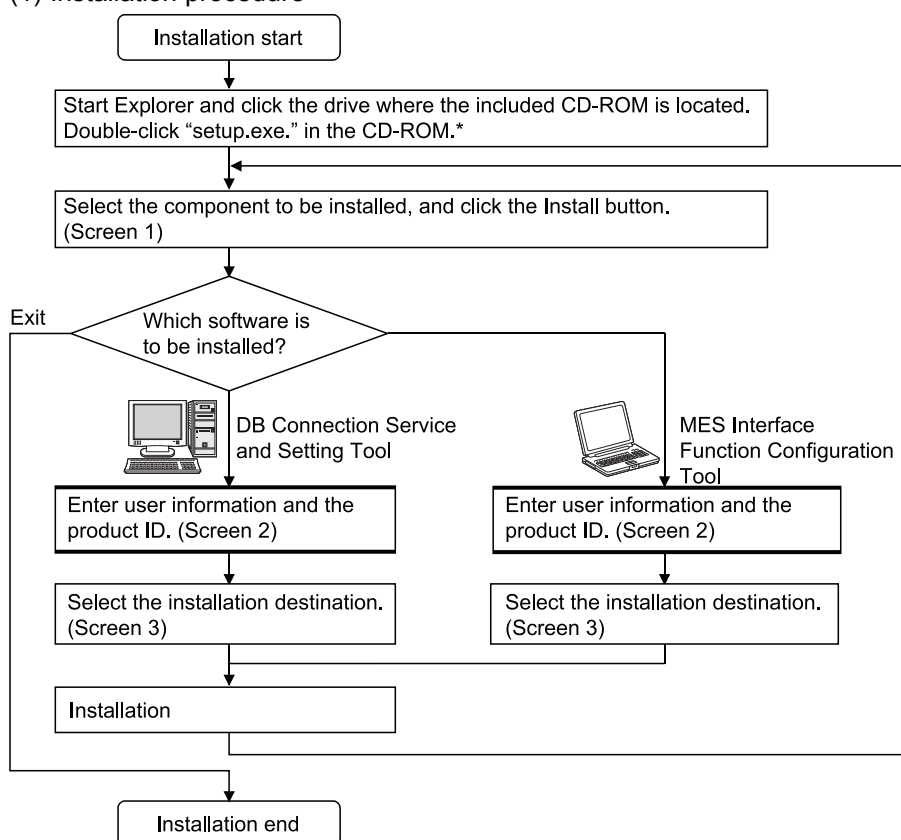
Thank you for choosing the Mitsubishi Electric MELSEC-Q Series of MELSOFT MX MESInterface. In order to use this product, install the component to the personal computer according to the following procedure.

[Procedures for Installing and Uninstalling]

- Before starting installation, terminate all of other applications running on Windows®.
- When installing or uninstalling MX MESInterface, log on as a user with Administrator authority.
- For the operating environment and installation/uninstallation, also refer to the manual provided on the included CD-ROM.
- When installing MELSOFT to a Windows Vista®, Windows 7, Windows 8, Windows 8.1, and Windows 10-based personal computer, read the technical bulletin FA-A-0008/FA-A-0091/FA-A-0153/FA-A-0207.

* For the correspondence of the operating system, refer to the manual on the included CD-ROM.

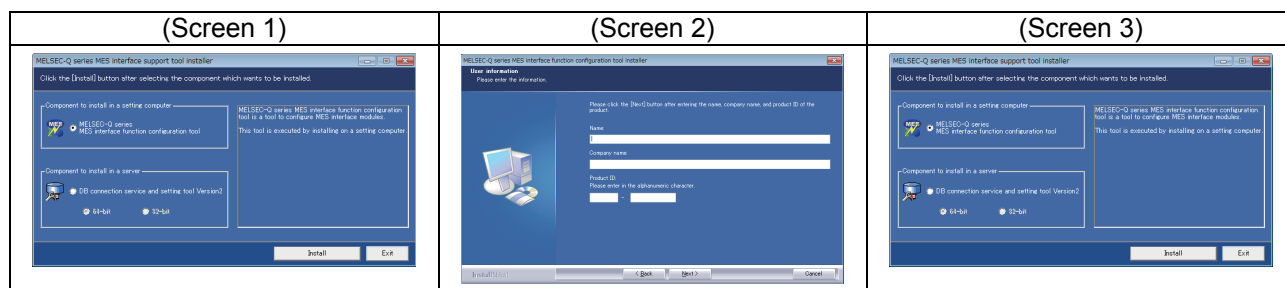
(1) Installation procedure



* To install DB Connection Service and Setting Tool Version 1, run the Steup.exe in the SUPPORT folder.

* For details on the DB Connection Service and Setting Tool Version 1 and Version 2, refer to the following manual.

MES Interface Module User's Manual



* If the confirmation screen appears during the installation, follow the screen instructions.

* Up to 100 characters can be used for the installation destination.

(Continued on the back page)

