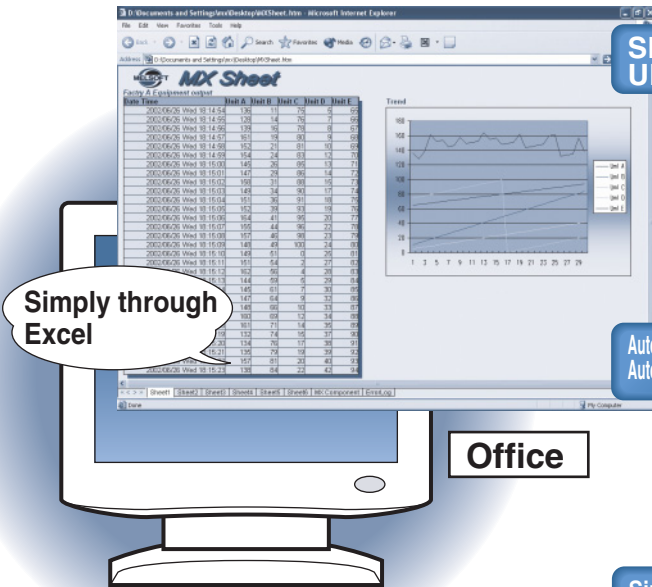




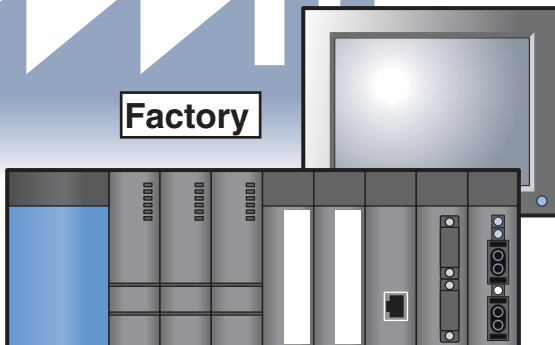
**Excel Communication Support Tool
MX Sheet Ver.1.03D**

MX sheet is easier to use than ever.



Office

Factory



SPEED UP

High definition logging

Data is collected at 0.1 sec. pitch.

Function	Up to Ver.1.02C	New From Ver.1.03D
Logging	1 sec. pitch	0.1 sec. pitch
Alarm summary	0.5 sec. pitch	0.1 sec. pitch
Comment	0.5 sec. pitch	0.1 sec. pitch
Monitor	0.5 sec. pitch	0.1 sec. pitch
Write	0.5 sec. pitch	0.1 sec. pitch

**Automatic save
Automatic print**

Improved automatic save and automatic print functions

Simpler creation (printing) and saving of daily-, monthly- and test-result-reports.

- * Multiple condition settings
- * Cell range is now cleared after save and print operations.

Simpler operation

Simple button operations

Buttons for the opening-, closing-, and one-shot-communications are pasted on an Excel sheet.

Security function

Security

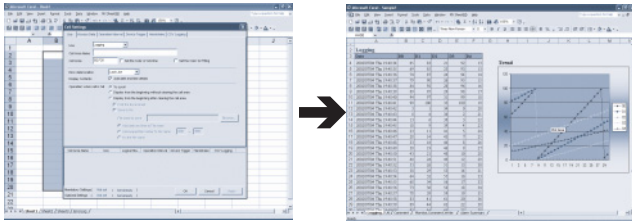
Password protection is now available for your MX Sheet settings.

Mitsubishi Electric Corporation Nagoya Works is a factory certified for ISO14001 (standards for environmental management systems) and ISO9001 (standards for quality assurance management systems)



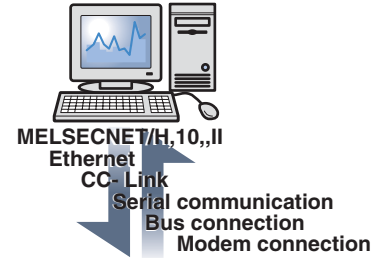
1. Simple and program-less settings

MX Sheet offers communication between PLC and Excel without program. It is available from Excel menu to set any attribute of cells and communication.



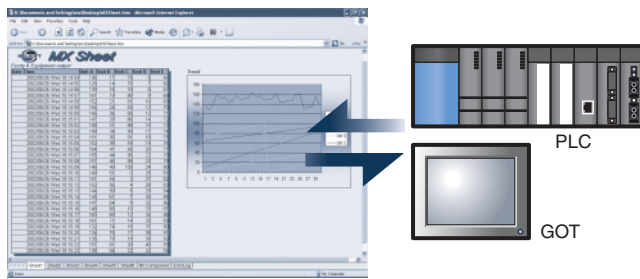
3. Support for various communication paths

MX Sheet supports various communication paths, allowing it to blend flexibly with any kind of user configuration. Connection to PLC has been simplified, with easier communications.



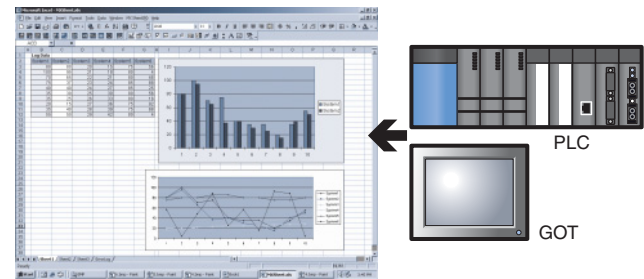
2. Correctly connect the office

The device data in the PLC can be monitored in real-time with Excel, and recipe data in Excel can be transferred to the PLC.



4. Effortless form and graph outputs

Data from the PLC is automatically fed into Excel, making the creation of forms and trend graphs a snap.



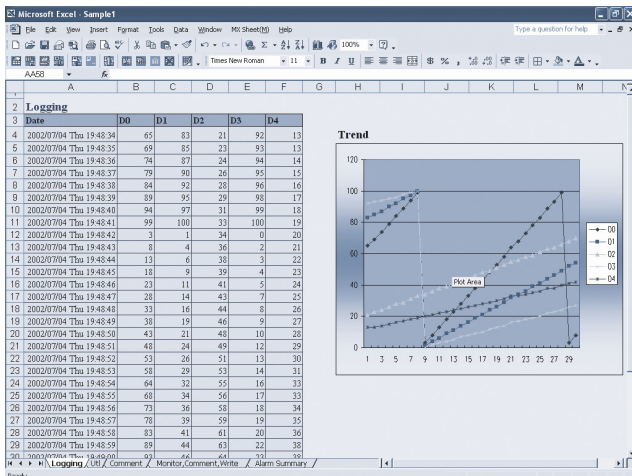
New Functions added from Ver.1.03D. **Ver.UP** Improvements in Ver.1.03D.

5. Collect the on-site data history

● Logging functions

This function logs the PLC device data on Excel. The on-site quality/temperature result data, etc. can be collected and analyzed easily.

Ver.UP Data is collected at 0.1 sec. pitch.



● Alarm summaries

Internal bit data from the PLC is logged in Excel as alarm data. This data can then be used to analyze and better understand facility stoppages and changeover time.

Ver.UP * Display of time elapsed from an alarm to recovery is now available.
* Display of alarm counts is now available.

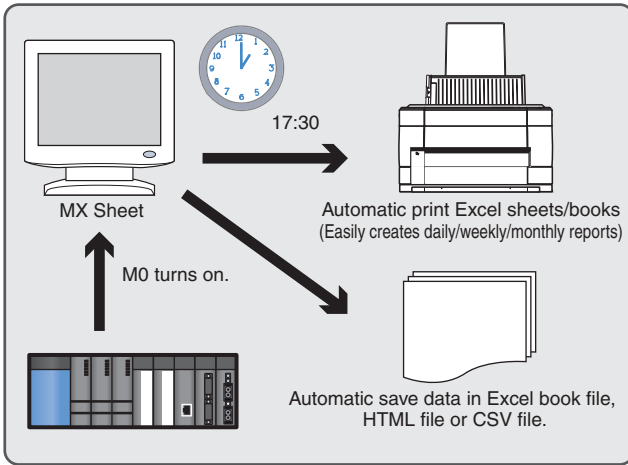
ON/OFF	Date time	Alarm	Status	Elapsed time	Number of occurrences
ON	2004/06/25 Fri 10:21:03	System A Emergency stop	Important		1
OFF	2004/06/25 Fri 10:23:13	System A Emergency stop	Important	00:02:10	1
ON	2004/06/25 Fri 10:45:42	Machine 1 Set up	Information		1
OFF	2004/06/25 Fri 10:59:52	Machine 1 Set up	Information	00:14:10	1
ON	2004/06/25 Fri 11:30:00	Line A Stop	Important		1
ON	2004/06/25 Fri 11:32:52	Line B Stop	Important		1
OFF	2004/06/25 Fri 11:40:55	Line B Stop	Important	00:07:03	1
OFF	2004/06/25 Fri 11:43:00	Line A Stop	Important	00:13:00	1

6. Automatic creation of daily reports, etc.

This function automatically saves and prints the data displayed on Excel at a specified time or triggered from the condition of a PLC device. It can automatically print and save daily report and test results.

Ver.UP

- * Multiple settings for automatic save and automatic print
- * Deleting specified cell areas after save and print operations
- * Automatically-saved CSV-format



7. Simple button operations **New**

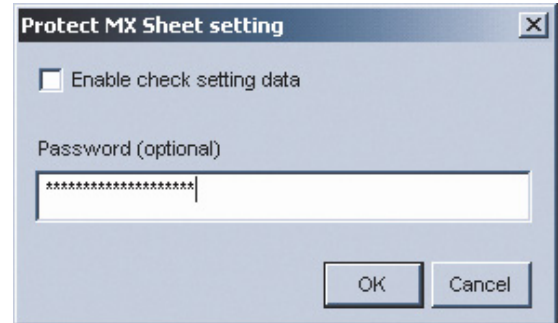
Buttons for the opening-, closing-, and one-shot-communications are pasted on an Excel sheet. Opening, closing and one-shot communications are possible with only clicking a button.

Start Communication		End Communication		
System Name	Tank	Temp	Pressure	Flow
A	1544	30	120	81
B	1554	31	125	85
C	1558	35	130	79
D	1558	38	135	69

Settings of System A		Write	
Start point	Torque	MAX	MIN
2000	480	6000	30

8. Security **New**

Password protection is now available for your MX Sheet settings.



9. Other functions **Ver.UP**

The following functions have been added. These new functions enable users to make more detailed settings, and further improve MX Sheet usability.

- Hexadecimal value display is now available.
- It is now possible to enable or disable the deletion of each cell area when communications start.
- Error log output can be enabled or disabled.
- Display automatically switches to the error log sheet when an error occurs.
- Titles are added for the logging and alarm summary cell range.

Operating Environment

Item	Details
Excel	Excel 2000/2002/2003
OS	Windows® 98/ Windows® Me Windows NT®4.0/ Windows® 2000 Professional Windows® XP Professional/ Windows® XP Home Edition
MX Component*	MX component Ver.3.01B or later

* MX Component is required to run MX Sheet.

Product configuration

(1) MX Sheet Ver.1

Product name	Model	Model code	Remarks
MX Sheet Version1 (CD-ROM version) Single unit	SW1D5C-SHEET-E	1LM830	
MX Works (CD-ROM version) Set product	SW1D5C-SHEETSET-E	1LM832	Set consisting MX Component and MX Sheet

(2) Volume license product

Volume license products are available when two or more licenses are required.
Contact your local Mitsubishi service or representative for details.

Product name	Model
MX Sheet Version 1 (CD-ROM version) Volume license product	SW1D5C-SHEET-EA

(3) Additional license product

Product name	Model	Remarks
MX Sheet Version1 Additional license product	SW1D5C-SHEET-EAZ	This product does not include the CD-ROM. Only the license certificate with the product ID No. is issued.

Manuals

MX Sheet Ver.1

Manual name	Manual supply status	IB/SH No.	Compatible sub-No.	Model code
MX Sheet Version1 Operating Manual (Introduction)	Sold separately	SH-080347-E	-C or later	13JU34
MX Sheet Version1 Operating Manual	Sold separately	SH-080348-E	-C or later	13JU35

Country/Region	Sales office	Tel/Fax	Country/Region	Sales office	Tel/Fax
U.S.A	Mitsubishi Electric Automation Inc. 500 Corporate Woods Parkway Vernon Hills, IL 60061	Tel : +1-847-478-2100 Fax : +1-847-478-2396	Taiwan	Setsuyo Enterprise Co., Ltd. 6F., No.105 Wu-Kung 3rd.RD, Wu-Ku Hsiang, Taipei Hsine, Taiwan	Tel : +886-2-2299-2499 Fax : +886-2-2299-2509
Brazil	MELCO-TEC Rep. Com.e Assessoria Tecnica Ltda. AV. Paulista 1471, Conj. 308, Sao Paulo City, Sao Paulo State, Brazil	Tel : +55-11-283-2423 Fax : +55-11-288-3047	Korea	HAN NEUNG TECHNO CO., LTD. 1F Dong Seo Game Channel Bldg., 660-11, Deungchon-dong Kangsec-ku, Seoul, Korea	Tel : +82-2-3660-9552 Fax : +82-2-3664-8372
Germany	Mitsubishi Electric Europe B.V. German Branch Gothaer Strsse 8 D-40880 Ratingen, GERMANY	Tel : +49-2102-486-0 Fax : +49-2102-486-7170	Singapore	Mitsubishi Electric Asia Pte. Ltd. 307 ALEXANDRA ROAD #05-01/02, MITSUBISHI ELECTRIC BUILDING SINGAPORE 159943	Tel : +65-6473-2308 Fax : +65-6476-7439
U.K	Mitsubishi Electric Europe B.V. UK Branch Travellers Lane, Hatfield, Herts., AL10 8XB, UK	Tel : +44-1707-276100 Fax : +44-1707-278695	Thailand	F. A. Tech Co., Ltd. 898/28.29.30 S.V.CITY BUILDING, OFFICE TOWER 2,FLOOR 17-18 RAMA 3 ROAD, BANGKONGPANG, YANNAWA, BANGKOK 10120	Tel : +66-2-682-6522 Fax : +66-2-682-6020
Italy	Mitsubishi Electric Europe B.V. Italian Branch Centro Dir. Colleoni, Pal. Perseo - Ingr.2 Via Paracelso 12, 20041 Agrate B., Milano, Italy	Tel : +39-039-6053344 Fax : +39-039-6053312	Indonesia	P.T. Autoteknindo SUMBER MAKMUR JL. MUARA KARANG SELATAN BLOK A UTARA NO.1 KAV. NO.11 KAWASAN INDUSTRI/ PERGUDANGAN JAKARTA - UTARA 14440	Tel : +62-21-663-0833 Fax : +62-21-663-0832
Spain	Mitsubishi Electric Europe B.V. Spanish Branch Carretera de Rubi 76-80 08190 - Sant Cugat del Valles, Barcelona, Spain	Tel : +34-93-565-3131 Fax : +34-93-589-2948	India	Messung Systems Put, Ltd. Electronic Sadan NO:111 Unit No15, M.I.D.C BHOSARI, PUNE-411026	Tel : +91-20-712-2807 Fax : +91-20-712-0391
France	Mitsubishi Electric Europe B.V. French Branch 25 Boulevard des Bouvets, F-92741 Nanterre Cedex, France	Tel : +33-1-5568-5568 Fax : +33-1-5568-5685	Australia	Mitsubishi Electric Australia Pty. Ltd. 348 Victoria Road, PostalBag, No 2, Rydalmere, N.S.W 2116, Australia	Tel : +61-2-9684-7777 Fax : +61-2-9684-7245
South Africa	Circuit Breaker Industries LTD. Tripswitch Drive, Elandsfontein Gauteng, South Africa	Tel : +27-11-928-2000 Fax : +27-11-392-2354			
Hong Kong	Ryden Automation Ltd. 10th Floor, Manulife Tower, 169 Electric Road, North Point, Hong Kong	Tel : +852-2887-8870 Fax : +852-2887-7984			
China	Ryden Automation Shanghai Ltd. 3F Block5 Building Automation Instrumentation Plaza 103 Cao Bao Rd. Shanghai 200233 China	Tel : +86-21-6475-3228 Fax : +86-21-6484-6996			



HEAD OFFICE: 1-8-12, OFFICE TOWER Z 14F HARUMI CHUO-KU 104-6212, JAPAN
NAGOYA WORKS: 1-14, YADAMINAMI 5, HIGASIKU, NAGOYA, JAPAN