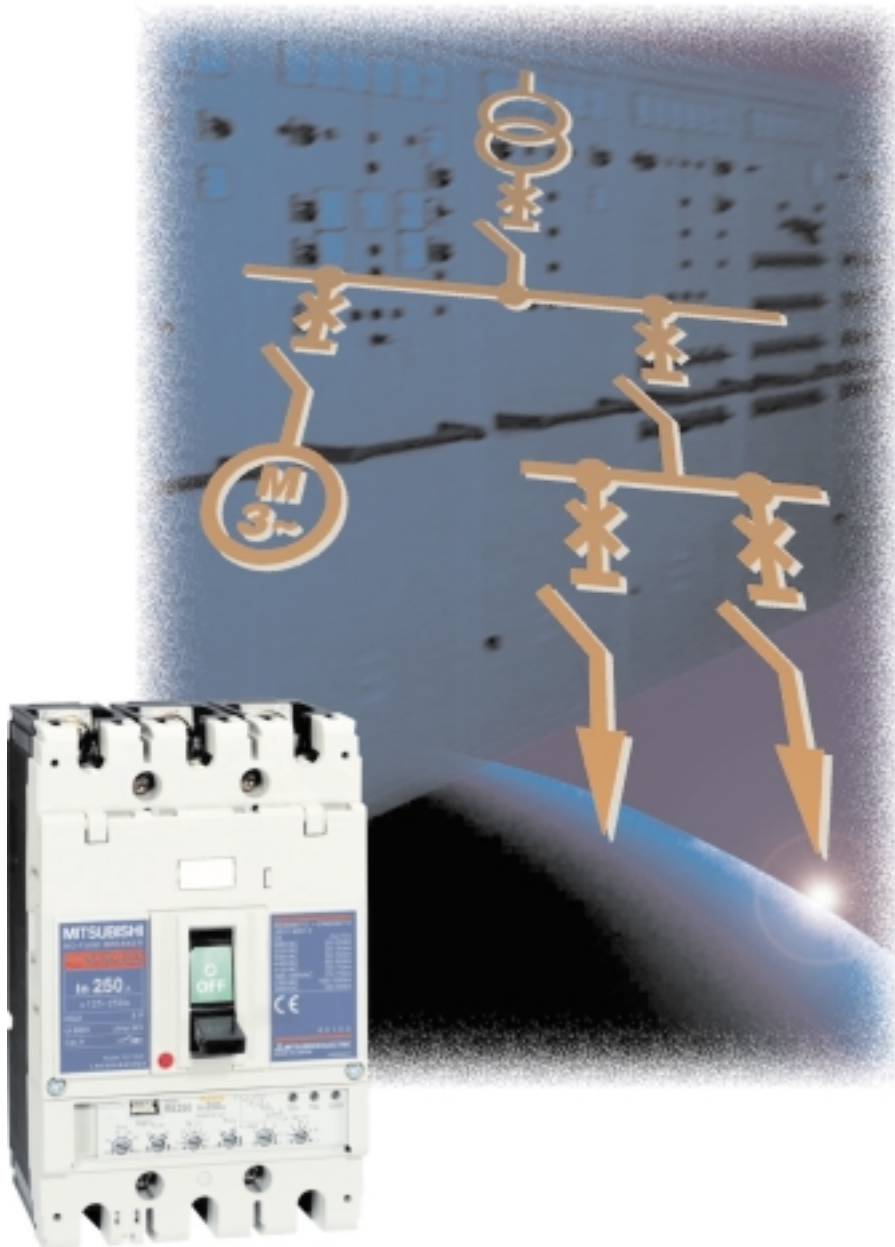


Low Voltage  
Switchgears  
Moulded Case  
Circuit Breakers  
Disconnectors

**WSS, PSS,  
SS Series  
3 – 1600 A**



---

**Intelligent Breaker Technology  
of the Next Generation**

## WSS, PSS and SS – The Extensive Breaker Series

*The circuits of the Mitsubishi breaker series are amongst the smallest compact circuit breakers in the world with electronic overload indication of this kind. The system is based, among other things, on the well-known and proven microprocessor technology.*



NF250-SGW, 3p



NF400-SEP, 3p



NF1000-SS, 3p

### WSS – World Super Series

The new WSS breaker series meets national and international protection ratings according to VDE, EN, and IEC standards for industrial applications as well as for extended shipping demands. The new tripping technology guarantees a high reliability and highest protection.

- 16 to 250 A in one model size (3- and 4-pole)
- interchangeable relay unit (thermal type or electronic type)
- available in fixed and slot-in versions
- breaking capacity  $I_{cs} = 100\% I_{cu}$ , up to 690 V

### PSS – Progressive Super Series

The proven Progressive Super Series features technical know-how and the microprocessor technology tried and tested in longstanding experience.

The fully enclosed circuit breakers provide an increased safety and at the same time decreased switching times.

- 400 to 800 A
- 2 model sizes (3- and 4-pole)
- electronic trip system
- available in fixed and slot-in versions
- additional disconnectors available

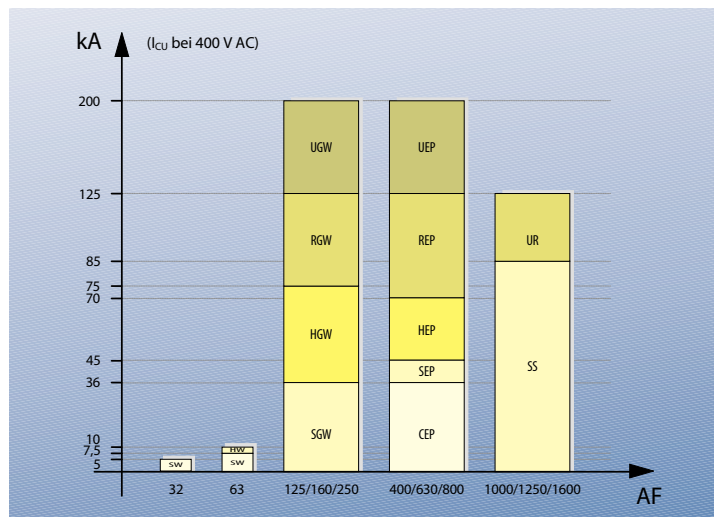
### SS – Super Series

The proven standard series for a high breaking performance providing an optimum protection for transformer and generator feed in, and output breakers. Circuit breakers can be used as section or disconnecting switch.

- 1000 to 1600 A
- 1 model size (3- and 4-pole)
- electronic trip system
- available in fixed and slot-in versions

### Breaking performance

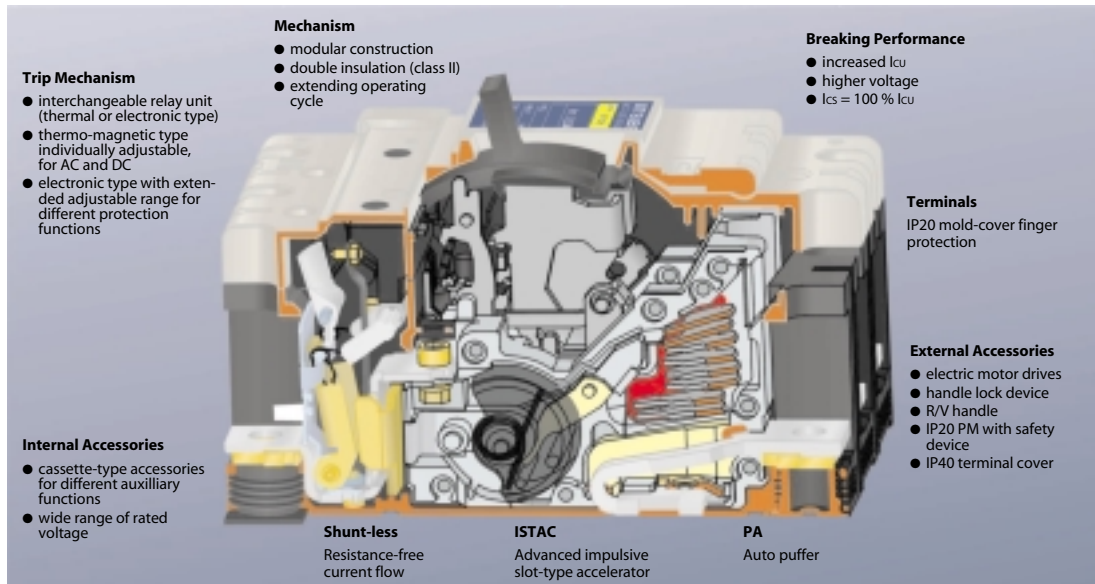
*The complete range of moulded case circuit breakers from 3 to 1600 A.*



### Intelligent Breaking Technology for Your Safety

With its innovative breaking technology all Mitsubishi breakers offer greater safety and even faster circuit-breaking speed through the use of the latest switch-off technology and innovative engineering, with a newly developed electronic trip relay.

# More Innovation for Distinguished Breaking Performance

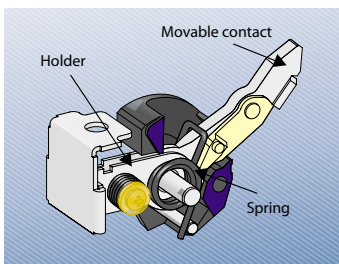


With the WSS series Mitsubishi Electric presents a breaker generation providing an innovative breaker technology for

- more safety
- more flexibility
- more reliability

## Shunt-Less Current Flow Technology

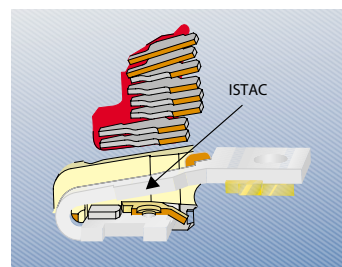
The constructive design of movable and fixed conductors considerably contributes to an increased lifetime.



## ISTAC – The Patented Trip Technology

This advanced technology is based on the proven Mitsubishi patent, and in consideration of the layout of the current leads provides excellent opening cycles of the main conductors.

Consequently, an instant and safe current breaking is guaranteed. By the high-speed opening and the arc driving, the rising rate of the arc



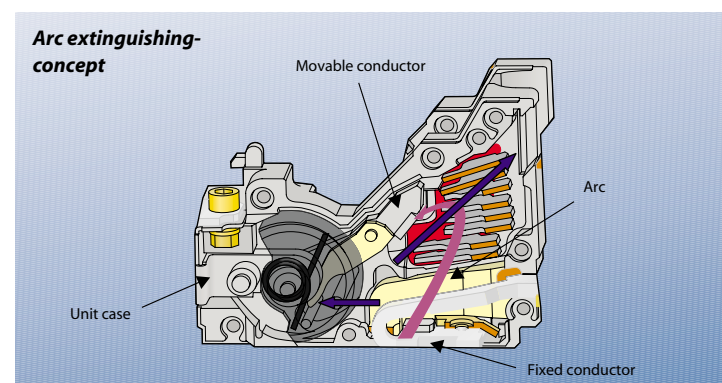
voltage is increased and the peak current is decreased.

Three new technologies developed for sophisticated market demands:

- Shunt-less, the resistance-free current flow technology
- ISTAC, the patented breaking technology
- PA, the auto-puffer for arc extinguishing

## Auto-Puffer – Polymer Ablation Type Auto Puffer

This technology increases the interrupting performance by blowing out the gas to the arc by right angle. The gas pressure which is generated from high-polymer materials is accumulated in the accumulating space, and the gas is blown to the arc to extinguish. Especially this technology improves the high voltage breaking performance.



State of the art technology and materials in particular increase the short-circuit tripping capability by intelligently making use of the gas pressure that results from the arc.

More performance to  
meet the needs of  
the next generation

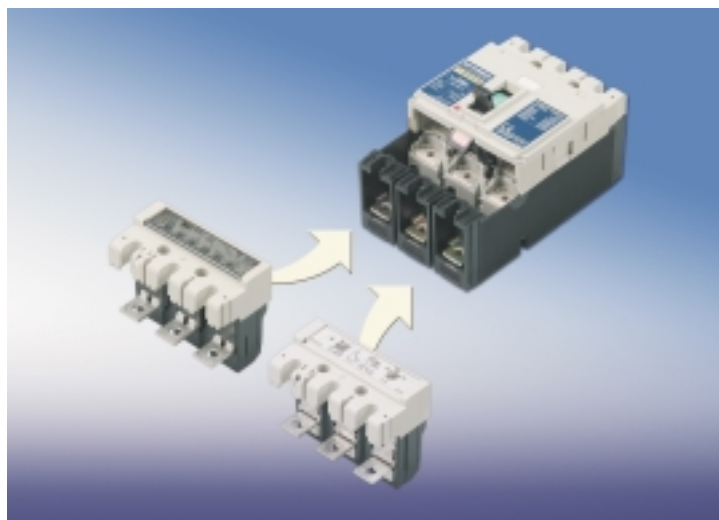


## Versatility for a Safe Installation and Higher Application Capacities

*Versatility in easy, quick,  
and safe installation for  
higher application capa-  
cities.*

To enhance flexibility, the Mitsubishi WS series is equipped with interchangeable relay units. The units are available in thermal or electronic types.

The alternative use of a thermal adjustable or electronic relay significantly increases the flexibility of the breakers. Consequently, the stockkeeping of spare parts is considerably reduced saving time and money.



### Thermal Adjustable Relay

### Electronic Relay

*Choose the appropriate  
relay according to your  
demands.*

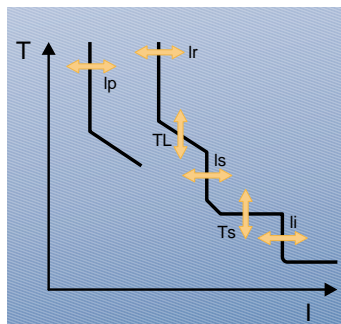
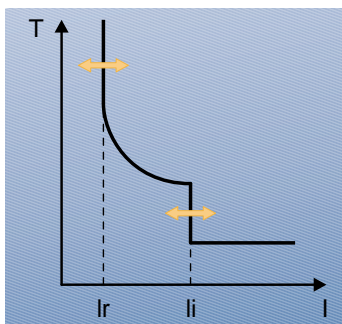


The thermal adjustable relay features a wide thermo-magnetic setting range and can be used for AC and DC.

The electronic relay provides options to set all relevant currents or time ranges. A pre-alarm function is standard equipment.

The relay is particularly used where wide and precise setting ranges are required.

*High-level flexibility  
according to your  
demands.*

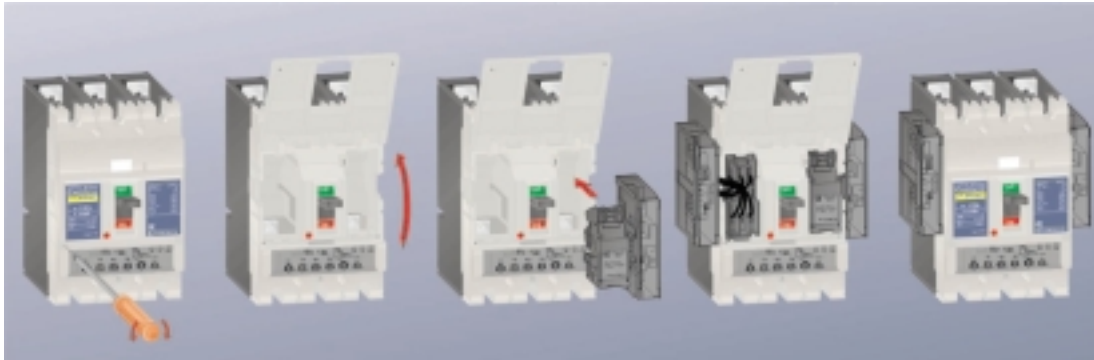


|               | NF125 | NF160 | NF250 |
|---------------|-------|-------|-------|
| Rating In (A) |       |       |       |
| 25            | ◆     |       |       |
| 40            | ◆     |       |       |
| 63            | ◆     |       |       |
| 100           | ◆     |       |       |
| 125           | ◆     |       |       |
| 160           |       | ◆     | ◆     |
| 250           |       |       | ◆     |

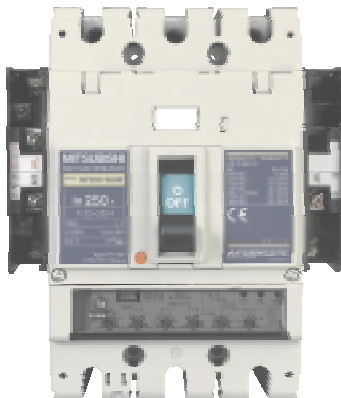
|               | NF125 | NF160 | NF250 |
|---------------|-------|-------|-------|
| Rating In (A) |       |       |       |
| 25            | ◆     |       |       |
| 40            | ◆     |       |       |
| 63            | ◆     |       |       |
| 100           | ◆     |       |       |
| 125           | ◆     |       |       |
| 160           |       | ◆     |       |
| 250           |       |       | ◆     |



## Product Design which Pursues Greater Use Ease by Wide Variations



*The accessories simply slot in and out for quick flexible installation.*



### Intelligent Breakers enable Networking

Additional modules acquire status information of the breaker and enable networking and communications via the open networks CC-Link and PROFIBUS/DP.

The status information of the breaker directly reaches the central information control to be processed.



*MELSHORT 2 is a base software that meets the entire requirements definition for designing an energy distribution plant.*

### Modular Accessories

The arrangement and design of pluggable accessories such as indicator and auxiliary contacts allows you to modify the circuit in a way that saves time and space - at any time, even when built in and ready for operation. The presence of separate circuit chambers makes the system even safer.

Thus cassette type accessories ensure flexibility when upgrading circuits.

The cassette type accessories are available in 5 different versions and fit for breaker series from 30 AF up to 800 AF:

- alarm switch (AL)
- auxiliary switch (AX)
- alarm and auxiliary switch (AL+AX)
- shunt trip device (SHT)
- undervoltage trip device (UVT)



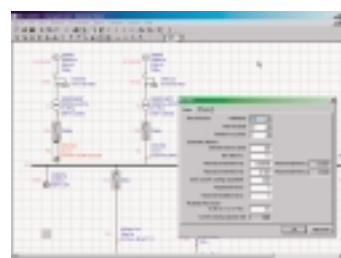
The breakers meet all regular requirements regarding energy management and network communications.

### Calculation and Selection Software MELSHORT2

This software provides a quick and easy selection of the appropriate low voltage switchgears according to the required rated operation trip voltage and the respective peripheral equipment.

The program can be operated comfortably, easily, and quickly via interactive menus.

The Software is available on CD-ROM and runs under MS Windows® 95/98/NT4.0 and MS Windows® 2000.



*Display of the circuit diagram of the network to be calculated including entry dialog.*

More performance to  
meet the needs of  
the next generation

# Model Overview and Specifications

| Type / Series    |                                       |                                      | WSS                            |                |                |                |                |              |           |
|------------------|---------------------------------------|--------------------------------------|--------------------------------|----------------|----------------|----------------|----------------|--------------|-----------|
|                  |                                       |                                      | NF32-SW                        | NF63-SW        | NF125-SGW RT   | NF125-SGW RE   | NF160-SGW RT   | NF160-SGW RE |           |
| S series         | Rated current In max. [A]             |                                      | 32                             | 63             | 125*           | 125*           | 160*           | 160*         |           |
|                  | Rated insulation voltage Ui [V]       |                                      | AC 600                         | 600            | 690            | 690            | 690            | 690          |           |
|                  | Number of poles                       |                                      | 3                              | 3 / 4          | 3 / 4          | 3 / 4          | 3 / 4          | 3 / 4        |           |
|                  | Rated breaking capacity [kA]          | IEC 947-2<br>EN 60 947-2<br>VDE 0660 | 690 V AC                       | —              | —              | 8 / 8          | 8 / 8          | 8 / 8        |           |
|                  |                                       |                                      | 500 V AC                       | 2,5 / 1        | 7,5 / 4        | 30 / 30        | 30 / 30        | 30 / 30      |           |
|                  |                                       |                                      | 440 V AC                       | 2,5 / 1        | 7,5 / 4        | 36 / 36        | 36 / 36        | 36 / 36      |           |
|                  |                                       |                                      | 400 V AC                       | 5 / 2          | 7,5 / 4        | 36 / 36        | 36 / 36        | 36 / 36      |           |
|                  |                                       |                                      | 230 V AC                       | 7,5 / 4        | 15 / 8         | 85 / 85        | 85 / 85        | 85 / 85      |           |
| 300 V DC         |                                       | —                                    | —                              | 20 / 20**      | —              | 20 / 20**      | —              |              |           |
| Dimensions WxHxD |                                       | [mm] 75x130x68                       | 75/100x130x68                  | 105/140x165x86 | 105/140x165x86 | 105/140x165x86 | 105/140x165x86 |              |           |
| Type             |                                       |                                      | NF63-HW                        |                | NF125-HGW RT   | NF125-HGW RE   | NF160-HGW RT   | NF160-HGW RE |           |
| H series         | Rated current In max. [A]             |                                      |                                |                | 63             | 125*           | 125*           | 160*         | 160*      |
|                  | Rated insulation voltage Ui [V]       |                                      |                                |                | 690            | 690            | 690            | 690          | 690       |
|                  | Number of poles                       |                                      |                                |                | 3 / 4          | 3 / 4          | 3 / 4          | 3 / 4        | 3 / 4     |
|                  | Rated breaking capacity [kA]          | IEC 947-2<br>EN 60 947-2<br>VDE 0660 | 690 V AC                       | 2,5 / 1        |                | 20 / 20        | 20 / 20        | 20 / 20      | 20 / 20   |
|                  |                                       |                                      | 500 V AC                       | 7,5 / 4        |                | 50 / 50        | 50 / 50        | 50 / 50      | 50 / 50   |
|                  |                                       |                                      | 440 V AC                       | 10 / 5         |                | 65 / 65        | 65 / 65        | 65 / 65      | 65 / 65   |
|                  |                                       |                                      | 400 V AC                       | 10 / 5         |                | 75 / 75        | 75 / 75        | 75 / 75      | 75 / 75   |
|                  |                                       |                                      | 230 V AC                       | 25 / 13        |                | 100 / 100      | 100 / 100      | 100 / 100    | 100 / 100 |
| 300 V DC         |                                       | —                                    |                                | 40 / 40**      | —              | 40 / 40**      | —              |              |           |
| Dimensions WxHxD |                                       | [mm]                                 | 75/100x130x68                  | 105/140x165x86 | 105/140x165x86 | 105/140x165x86 | 105/140x165x86 |              |           |
| Type             |                                       |                                      | NF125-RGW RT                   |                |                |                |                |              |           |
| R series         | Rated current In max. [A]             |                                      |                                |                | 100*           |                |                |              |           |
|                  | Rated insulation voltage Ui [V]       |                                      |                                |                | 690            |                |                |              |           |
|                  | Number of poles                       |                                      |                                |                | 3              |                |                |              |           |
|                  | Rated breaking capacity [kA]          | IEC 947-2<br>EN 60 947-2<br>VDE 0660 | 690 V AC                       |                |                | 25 / 25        |                |              |           |
|                  |                                       |                                      | 500 V AC                       |                |                | 125 / 125      |                |              |           |
|                  |                                       |                                      | 440 V AC                       |                |                | 125 / 125      |                |              |           |
|                  |                                       |                                      | 400 V AC                       |                |                | 125 / 125      |                |              |           |
|                  |                                       |                                      | 230 V AC                       |                |                | 125 / 125      |                |              |           |
| 300 V DC         |                                       |                                      |                                | 40 / 40**      |                |                |                |              |           |
| Dimensions WxHxD |                                       | [mm]                                 | 105x240x86                     |                |                |                |                |              |           |
| Type             |                                       |                                      | NF125-UGW RT                   |                |                |                |                |              |           |
| U series         | Rated current In max. [A]             |                                      |                                |                | 100*           |                |                |              |           |
|                  | Rated insulation voltage Ui [V]       |                                      |                                |                | 690            |                |                |              |           |
|                  | Number of poles                       |                                      |                                |                | 3 / 4          |                |                |              |           |
|                  | Rated breaking capacity [kA]          | IEC 947-2<br>EN 60 947-2<br>VDE 0660 | 690 V AC                       |                |                | 30 / 30        |                |              |           |
|                  |                                       |                                      | 500 V AC                       |                |                | 200 / 200      |                |              |           |
|                  |                                       |                                      | 440 V AC                       |                |                | 200 / 200      |                |              |           |
|                  |                                       |                                      | 400 V AC                       |                |                | 200 / 200      |                |              |           |
|                  |                                       |                                      | 230 V AC                       |                |                | 200 / 200      |                |              |           |
| 300 V DC         |                                       |                                      |                                | 40 / 40**      |                |                |                |              |           |
| Dimensions WxHxD |                                       | mm]                                  | 105 / 140x240x86               |                |                |                |                |              |           |
| Type             |                                       |                                      |                                |                |                |                |                |              |           |
| C series         | Rated current In max. [A]             |                                      |                                |                |                |                |                |              |           |
|                  | Rated insulation voltage Ui [V]       |                                      |                                |                |                |                |                |              |           |
|                  | Number of poles                       |                                      |                                |                |                |                |                |              |           |
|                  | Rated breaking capacity [kA]          | IEC 947-2<br>EN 60 947-2<br>VDE 0660 | 690 V AC                       |                |                |                |                |              |           |
|                  |                                       |                                      | 500 V AC                       |                |                |                |                |              |           |
|                  |                                       |                                      | 440 V AC                       |                |                |                |                |              |           |
|                  |                                       |                                      | 400 V AC                       |                |                |                |                |              |           |
|                  |                                       |                                      | 230 V AC                       |                |                |                |                |              |           |
| Dimensions WxHxD |                                       | [mm]                                 |                                |                |                |                |                |              |           |
| Type             |                                       |                                      | DSN32-SW                       |                | DSN63-SW       | DSN125-SGW     | DSN160-SGW     |              |           |
| Disconnectors    | Rated current In max. [A]             |                                      | 32                             | 63             | 125            | 160            |                |              |           |
|                  | Rated insulation voltage Ui [V]       |                                      | AC 600                         | 600            | 690            | 690            |                |              |           |
|                  | Rated voltage Ue [V]                  |                                      | AC (50/60 Hz) / DC** 500 / 250 | 500 / 250      | 690 / 300      | 690 / 300      |                |              |           |
|                  | Number of poles                       |                                      | 3                              | 3 / 4          | 3 / 4          | 3 / 4          |                |              |           |
|                  | Max. switching current [A] (breaking) |                                      | AC/DC 250 / 125                | 500 / 250      | 1000 / 500     | 1280 / 640     |                |              |           |
|                  | Dimensions WxHxD                      |                                      | 75x130x68                      | 75/100x130x68  | 105/140x165x86 | 105/140x165x86 |                |              |           |

\* adjustable      \*\* 2 poles in a row

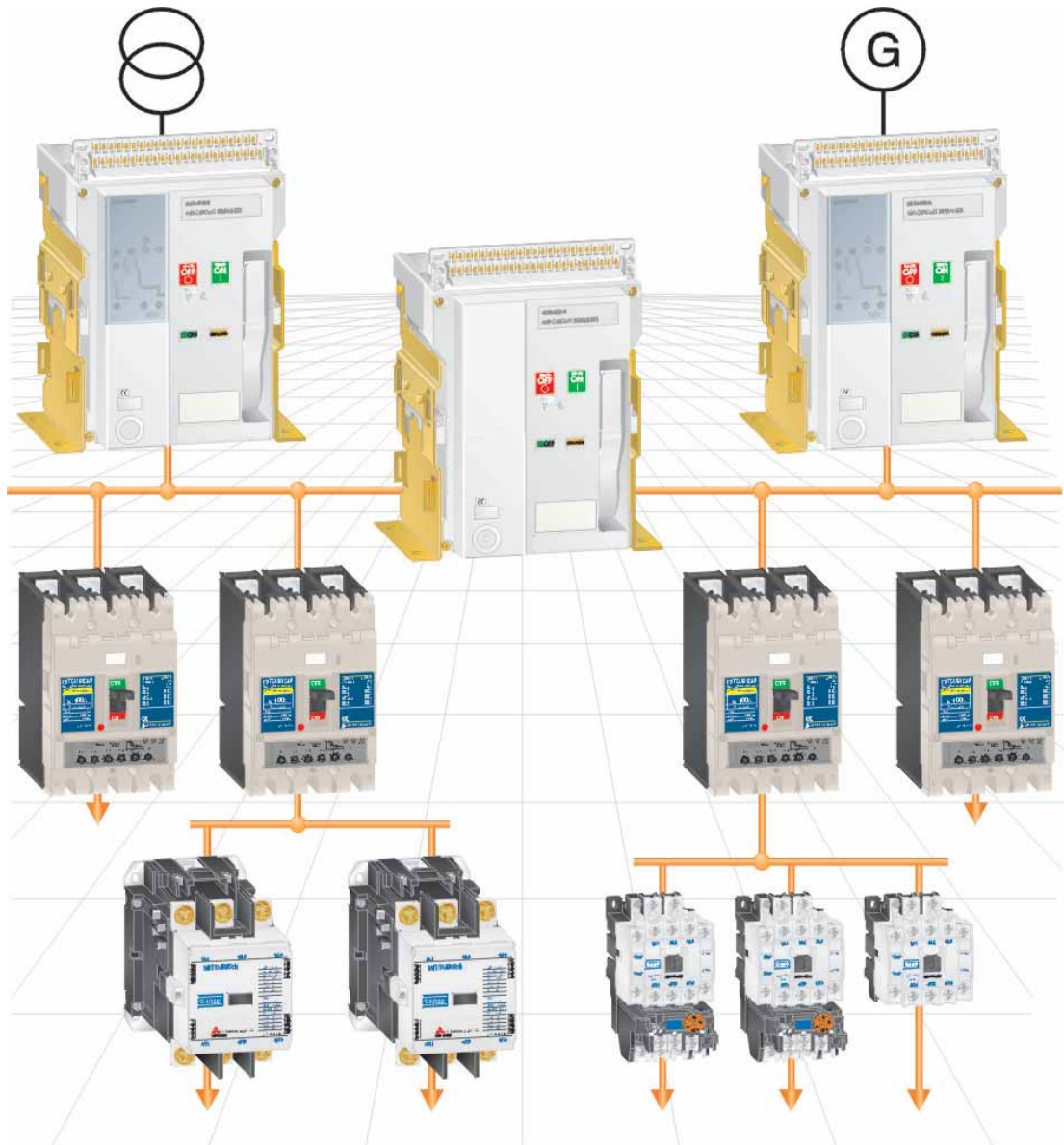
| WSS            |                     | PSS             |                 |                 | SS              |                 |                 |
|----------------|---------------------|-----------------|-----------------|-----------------|-----------------|-----------------|-----------------|
| NF250-SGW RT   | NF250-SGW RE        | NF400-SEP       | NF630-SEP       | NF800-SEP       | NF1000-SS       | NF1250-SS       | NF1600-SS       |
| 250*           | 250*                | 400*            | 630*            | 800*            | 1000*           | 1250*           | 1600*           |
| 690            | 690                 | 690             | 690             | 690             | 690             | 690             | 690             |
| 3 / 4          | 3 / 4               | 3 / 4           | 3 / 4           | 3 / 4           | 3 / 4           | 3 / 4           | 3 / 4           |
| 8 / 8          | 8 / 8               | 10 / 10         | 10 / 10         | 10 / 10         | 25 / 13         | 25 / 13         | 25 / 13         |
| 30 / 30        | 30 / 30             | 30 / 30         | 30 / 30         | 30 / 30         | 65 / 33         | 65 / 33         | 65 / 33         |
| 36 / 36        | 36 / 36             | 42 / 42         | 42 / 42         | 42 / 42         | 85 / 43         | 85 / 43         | 85 / 43         |
| 36 / 36        | 36 / 36             | 45 / 45         | 45 / 45         | 45 / 45         | 85 / 43         | 85 / 43         | 85 / 43         |
| 85 / 85        | 85 / 85             | 85 / 85         | 85 / 85         | 85 / 85         | 125 / 63        | 125 / 63        | 125 / 63        |
| 20 / 20**      | —                   | —               | —               | —               | —               | —               | —               |
| 105/140x165x86 | 105/140x165x86      | 140/185x257x103 | 210/280x275x103 | 210/280x275x103 | 210/280x406x140 | 210/280x406x140 | 210/280x406x140 |
| NF250-HGW RT   | NF250-HGW RE        | NF400-HEP       | NF630-HEP       | NF800-HEP       |                 |                 |                 |
| 250*           | 250*                | 400*            | 630*            | 800*            |                 |                 |                 |
| 690            | 690                 | 690             | 690             | 690             |                 |                 |                 |
| 3 / 4          | 3 / 4               | 3 / 4           | 3 / 4           | 3 / 4           |                 |                 |                 |
| 20 / 20        | 20 / 20             | 10 / 10         | 15 / 15         | 15 / 15         |                 |                 |                 |
| 50 / 50        | 50 / 50             | 50 / 50         | 50 / 50         | 50 / 50         |                 |                 |                 |
| 65 / 65        | 65 / 65             | 65 / 65         | 65 / 65         | 65 / 65         |                 |                 |                 |
| 75 / 75        | 75 / 75             | 70 / 70         | 70 / 70         | 70 / 70         |                 |                 |                 |
| 100 / 100      | 100 / 100           | 100 / 100       | 100 / 100       | 100 / 100       |                 |                 |                 |
| 40 / 40**      | —                   | —               | —               | —               |                 |                 |                 |
| 105/140x165x86 | 105/140x165x86      | 140/185x257x103 | 210/280x275x103 | 210/280x275x103 |                 |                 |                 |
| NF250-RGW RT   | NF400-REP           |                 | NF630-REP       | NF800-REP       |                 |                 |                 |
| 225*           | 400*                |                 | 630*            | 800*            |                 |                 |                 |
| 690            | 690                 |                 | 690             | 690             |                 |                 |                 |
| 3              | 3                   |                 | 3               | 3               |                 |                 |                 |
| 25 / 25        | 15 / 10             |                 | 20 / 15         | 20 / 15         |                 |                 |                 |
| 125 / 125      | 70 / 35             |                 | 70 / 35         | 70 / 35         |                 |                 |                 |
| 125 / 125      | 125 / 63            |                 | 125 / 63        | 125 / 63        |                 |                 |                 |
| 125 / 125      | 125 / 63            |                 | 125 / 63        | 125 / 63        |                 |                 |                 |
| 125 / 125      | 150 / 75            |                 | 150 / 75        | 150 / 75        |                 |                 |                 |
| 40 / 40**      | —                   |                 | —               | —               |                 |                 |                 |
| 105x240x86     | 140x257x103         |                 | 210x275x103     | 210x275x103     |                 |                 |                 |
| NF250-UGW RT   | NF400-UEP           | NF630-UEP       | NF800-UEP       | NF1250-UR       |                 |                 |                 |
| 225*           | 400*                | 630*            | 800*            | 1250*           |                 |                 |                 |
| 690            | 690                 | 690             | 690             | 690             |                 |                 |                 |
| 3 / 4          | 3 / 4               | 3 / 4           | 3 / 4           | 3 / 4           |                 |                 |                 |
| 30 / 30        | 35 / 35             | 35 / 35         | 35 / 35         | —               |                 |                 |                 |
| 200 / 200      | 170 / 170           | 170 / 170       | 170 / 170       | 85 / 42         |                 |                 |                 |
| 200 / 200      | 200 / 200           | 200 / 200       | 200 / 200       | 125 / 65        |                 |                 |                 |
| 200 / 200      | 200 / 200           | 200 / 200       | 200 / 200       | 125 / 65        |                 |                 |                 |
| 200 / 200      | 200 / 200           | 200 / 200       | 200 / 200       | 170 / 85        |                 |                 |                 |
| 40 / 40**      | —                   | —               | —               |                 |                 |                 |                 |
| 105/140x240x86 | 140/280x297/322x200 | 210/280x322x200 | 210/280x322x200 | 240/310x406x144 |                 |                 |                 |
|                |                     | NF-400-CEP      | NF630-CEP       | NF800-CEP       |                 |                 |                 |
|                |                     | 400*            | 630*            | 800*            |                 |                 |                 |
|                |                     | 600             | 600             | 600             |                 |                 |                 |
|                |                     | 3               | 3               | 3               |                 |                 |                 |
|                |                     | —               | —               | —               |                 |                 |                 |
|                |                     | 15 / 8          | 18 / 9          | 18 / 9          |                 |                 |                 |
|                |                     | 25 / 13         | 36 / 18         | 36 / 18         |                 |                 |                 |
|                |                     | 36 / 18         | 36 / 18         | 36 / 18         |                 |                 |                 |
|                |                     | 50 / 25         | 50 / 25         | 50 / 25         |                 |                 |                 |
|                |                     | 140x257x103     | 210x275x103     | 210x275x103     |                 |                 |                 |
| DSN250-SGW     | DSN400-SP           | DSN630-SP       | DSN800-SP       | DSN1000-SS      | DSN1250-SS      | DSN1600-SS      |                 |
| 250            | 400                 | 630             | 800             | 1000            | 1250            | 1600            |                 |
| 690            | 690                 | 690             | 690             | 660             | 660             | 660             |                 |
| 690 / 300      | 690 / 250           | 690 / 250       | 690 / 250       | 660 / 250       | 660 / 250       | 660 / 250       |                 |
| 3 / 4          | 3 / 4               | 3 / 4           | 3 / 4           | 3 / 4           | 3 / 4           | 3 / 4           |                 |
| 2000 / 1000    | 3200 / 1600         | 5040 / 2520     | 6400 / 3200     | 8000 / 14000    | 10000 / 5000    | 12800 / 6400    |                 |
| 105/140x165x86 | 140/185x257x103     | 210/280x275x103 | 210/280x275x103 | 210/280x406x140 | 210/280x406x140 | 210/280x406x140 |                 |

\* adjustable      \*\* 2 poles in a row

# Complete Solution for Line and Load Side

*Mitsubishi offers the whole line from Air Circuit Breakers over Low Voltage Switch-gears to Magnetic Contactors and Thermal Overload Relays.*

*The complete solution for all needs.*



## EUROPEAN HEADQUARTERS

MITSUBISHI ELECTRIC EUROPE B.V.  
Gothaer Straße 8  
**D-40880 Ratingen**  
Phone: +49 (0) 21 02/4 86-0

MITSUBISHI ELECTRIC EUROPE B.V.  
25, Boulevard des Bouvets  
**E-08190 Sant Cugat del Vallés**  
Phone: +34 9 3/5 65 31 60

MITSUBISHI ELECTRIC EUROPE B.V.  
Travellers Lane  
**GB-Hatfield Herts. AL10 8 XB**  
Phone: +44 (0) 17 07/27 61 00

MITSUBISHI ELECTRIC EUROPE B.V.  
Via Paracelso 12  
**I-20041 Agrate Brianza (MI)**  
Phone: +39 (0) 3 96 05 31

## EUROPEAN REPRESENTATIVES

Emac S.A. **BELGIUM**  
Industrialaan 1  
**B-1702 Groot-Bijgaarden**  
Phone: +32 (0) 2 / 481 02 11

INEA CR d.o.o. **CROATIA**  
Drvinje 63  
**HR-10000 Zagreb**  
Phone: +385 (0) 1 / 366 71 40

AutoCont **CZECHIA**  
Nemocnicni 12  
**CZ-702 00 Ostrava 2**  
Phone: +420 59 / 6152 111

Louis poulsen **DENMARK**  
Geminivej 32  
**DK-2670 Greve**  
Phone: +45 (0) 43 / 95 95 95

UTU POWEL OY **FINLAND**  
Box 33  
**FIN-04251 Kerava**  
Phone: +358 (9) / 274 64 20

A. Drepanis S.A. **GREECE**  
52, Arkadias Str.  
**GR-12132 Peristeri, Athens**  
Phone: +30 (10) 578 15 99

Meltrade Automatika Kft. **HUNGARY**  
55, Harmat St.  
**HU-1105 Budapest**  
Phone: +36 (0)1 / 2605 602

MITSUBISHI ELECTRIC **IRELAND**  
Westgate Business Park  
**IRL-Dublin 24**  
Phone: +353 (0) 1 / 419 88 00

GINO INDUSTRIES LTD. **ISRAEL**  
26, Ophir street  
**IL-32235 Haifa**  
Phone: +972 (0) 4 / 867 06 56

RIFAS UAB **LITHUANIA**  
Tinklų 29A  
**LT-5300 Panevezys**  
Phone: +370 (45) 582-728

INTEHIS SRL **MOLDOVA**  
Cuza-Voda 36/1-81  
**MD-2061 Chisinau**  
Phone: +373 (0) 2 / 562 263

Intech **NETHERLANDS**  
Sluisjesdijk 155  
**NL-3008 AB-Rotterdam**  
Phone: +31 (0) 10 / 487 19 11

SCANEEC AS **NORWAY**  
Leirvikasen 43 B  
**N-5020 Bergen**  
Phone: +47 55 50 60 00

MPL Technology Sp.z.o.o. **POLAND**  
ul. Sliczna 36  
**PL-31-444 Kraków**  
Phone: +48 (0) 12 / 632 28 85

Sirius **ROMANIA**  
Bd. Lacul Tei nr.1 B  
**RO-72301 Bucuresti 2**  
Phone: +40 (0) 21 / 201 71 47

Avtomatika Sever **RUSSIA**  
Krapivnij Per. 5, Of. 402  
**RU-194044 St Petersburg**  
Phone: +7 812 / 1183 238

CONSYS **RUSSIA**  
Promyshlennaya St. 42  
**RU-198099 St Petersburg**  
Phone: +7 812 / 325 36 53

Elektrostyle **RUSSIA**  
Ul Garschina 11  
**RU-140070 Moscovskaja Oblast**  
Phone: +7 095 / 261 - 3808

ICOS **RUSSIA**  
Ryazanskij Prospekt, 8a, Office 100  
**RU-109428 Moscow**  
Phone: +7 095 / 232 - 0207

INEA d.o.o. **SLOVENIA**  
Stegne 11  
**SI-1000 Ljubljana**  
Phone: +386 (0) 1- 513 8100

CBI Ltd **SOUTH AFRICA**  
Private Bag 2016  
**ZA-1600 Isando**  
Phone: +27 (0)11/ 928 2000

Euro Energy **SWEDEN**  
Järnvägsgratan 36  
**S-434 24 Kungsbacka**  
Phone: +46 (0) 300 / 69 00 40

TRIELEC AG **SWITZERLAND**  
Mühlentalstr. 136  
**CH-8200 Schaffhausen**  
Phone: +41 (0) 52 / 625 84 25

GTS **TURKEY**  
Darülaceze Cad. No. 43A KAT:2  
**TR-80270 Okmeydanı-Istanbul**  
Phone: +90 (0) 212 / 320 1640

Specifications subject to change without notice.  
Art.no.:70551-C, Printed in Germany 08.04

**MITSUBISHI ELECTRIC** INDUSTRIAL AUTOMATION

Gothaer Straße 8  
D-40880 Ratingen

Phone: +49 (0) 2102 486-780  
Hotline: +49 (0) 1805 000-765

Fax: +49 2102 486-4069  
megfa-mail@megfa.mee.com

www.mitsubishi-automation.de  
www.mitsubishi-automation.com