

MITSUBISHI INDUSTRIAL ROBOT
MELFA RH-1FHR5515 for pick & place
Feature
The motion performance improves for pick & place

By the capacity UP of the motor and the arm lightening, the motion performance improves about 2 times for pick & place.

(*1) RH-6FH ratio.

The space-saving can be set up

By the set up cell mount/wall hanging, The peripheral equipment can be set up under the robot.

Equipment connection according to usage

- The vacuum valve for adsorption mounted in the arm. [option]
- For the grease dispersion prevention, the bellows mounted. [option]


Standard Specifications

Item	Unit	Spec value	
Mmodel name	-	RH-1FHR5515	
Instllation posture	-	On floor, hanging (against wall (*2))	
Degree of freedom	-	4	
Arm length	No1 arm	mm	325
	No2 arm	mm	225
Max reach radius (NO.1 + NO.2)	mm	550	
Operating Area	J1	deg	±170
	J2	deg	±145
	J3 (Z)	mm	150
	J4 (θ)	deg	±360
Max. speed of motion	J1	deg/s	337.5
	J2	deg/s	720
	J3 (Z)	mm/s	765
	J4 (θ)	deg/s	3,000
Cycle time	sec	0.28 (1 kg) (*3)	
Payload	typical	kg	1
	max	kg	3
Pose repeatability	X-Y synthesis	mm	±0.012
	J3 (Z)	mm	±0.010
	J4 (θ)	deg	±0.004
Ambient temperature	°C	0 to 40	
Weight	kgf	49	
Protection specification	-	IP20 / equivalent IP65 (*4)	
Air cleanliness ISO class	-	ISO class5 (*4)	
Connected controller	-	CR750/751-D/Q	

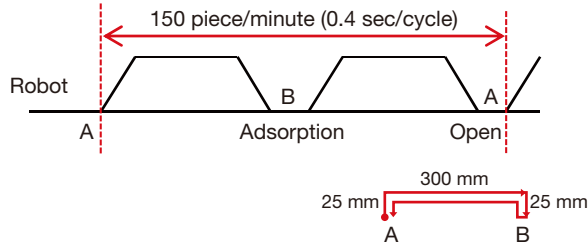
(*2) The preparation for the trestle is needed in the customer.

(*3) 140-160 pic/min with conveyer tracking motion.

(*4) It requires bellows [option] on the J4 shaft.

The motion performance improves for pick & place

By the capacity UP of the motor and the arm lightening, the motion performance improves about 2 times for pick & place.
(*5) RH-6FH ratio.



[Condition]

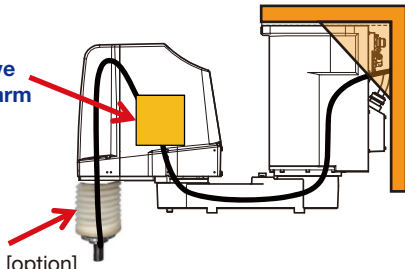
- 1) XY Position : X = 500 mm, Y = -90 mm to 210 mm
- 2) Z Height : 25 mm upper area
- 3) Load : 1 kg
- 4) Include hand open/close

Equipment connection according to usage

- The vacuum valve for adsorption mounted in the arm. [option]
- For the grease dispersion prevention, the bellows mounted. [option]

The vacuum valve mounted in the arm [option]

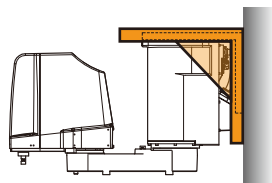
Bellow installed [option]



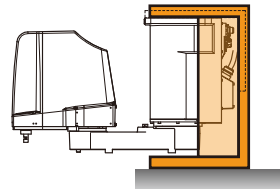
Installation method

It is possible to correspond to the floor putting by the shape change of the trestle in addition to cell mount/wall hanging.

Cell mount

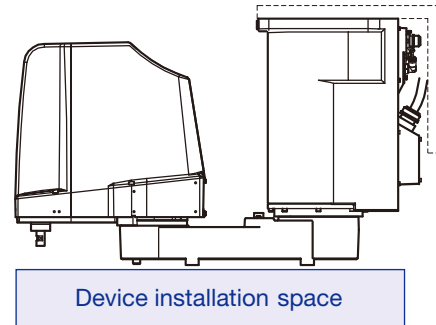


On floor

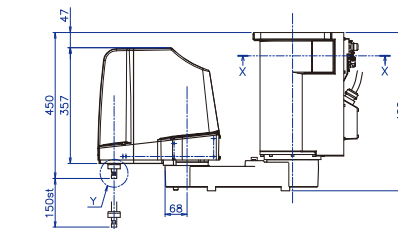
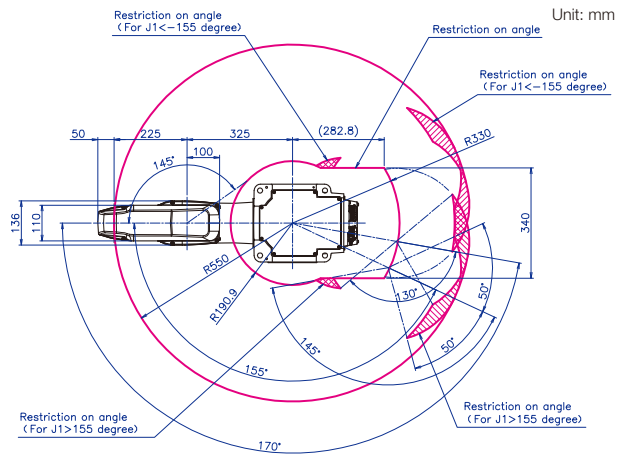


The space-saving can be set up

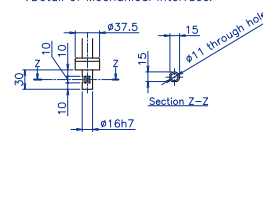
By the set up cell mount/wall hanging, the peripheral equipment can be set up under the robot.



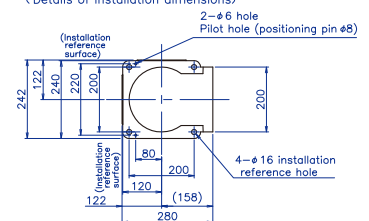
Operating range figure, Outside dimensions figure



Section Y
(Detail of Mechanical interface)



Section X-X
(Details of installation dimensions)



MITSUBISHI ELECTRIC CORPORATION

HEAD OFFICE: TOKYO BUILDING, 2-7-3, MARUNOUCHI, CHIYODA-KU, TOKYO 100-8310, JAPAN

www.Global.MitsubishiElectric.com