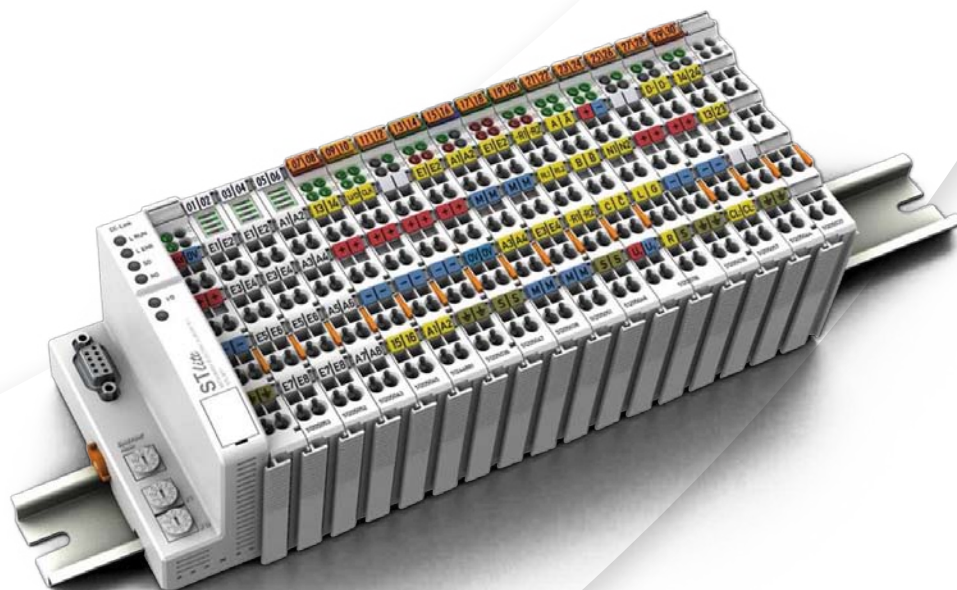


STlite

Remote Inputs and Outputs

I/Os for open networks – versatile, space-saving and flexible



Combining these modules with other open network components provides maximum flexibility in system configuration



The modular design means that there is always the right number of inputs and outputs in the right place



A large choice of different I/O modules (compatible with Wago 750) fulfils all application requirements

Versatile and flexible



The I/O modules of the STlite range offer excellent reliability even under harsh ambient conditions.

The STlite series has been approved for a wide range of applications, and with its fine modularity and fieldbus-independent design is particularly suitable for the requirements of remote fieldbus systems. It has been optimised for process-oriented communication - with scalable performance and high integration density.

I/O for every application

■ Fine modularity

The separate head station and I/O modules make for easy handling and maximum efficiency. Modules can be replaced more quickly and more easily thanks to the fine modularity of the design. Further I/O points can be added at will. At the same time, a remote I/O station can be implemented with just two channels.

■ Large choice of I/O modules

The number of possible applications which can be realised with the STlite series is virtually unlimited thanks to the many types of I/O available. As well as digital and analog inputs and outputs, these also include modules with SSI or incremental encoder interface, up/down counters and a PT100/RTD module.

■ High flexibility

Optional configurations of digital/analog inputs/outputs and special functions with different potentials, performance and signals on one fieldbus node lend the STlite a high degree of flexibility.

■ Reliable operation

Handling is simplified by the automatic connection of power and data contacts and a plug-in connection plane using a bus plug connector. Inputs and outputs are connected by means of spring terminals from the proven CAGE CLAMP® system.



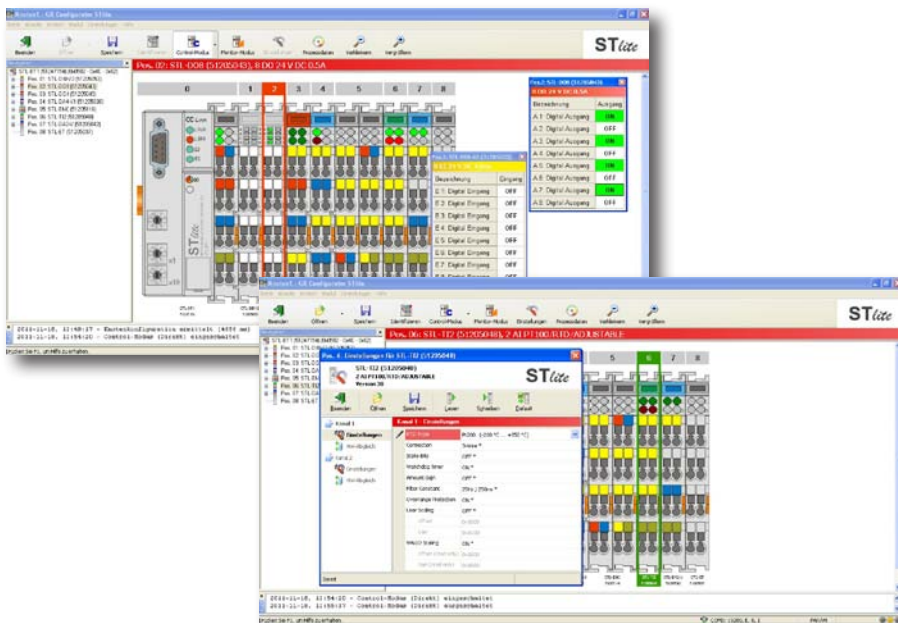
Quick and reliable connection thanks to self-cleaning tinned contacts

Fieldbus independent

The basic modular concept of the system is also reflected in its support for numerous fieldbus systems. There is a choice of different fieldbus head stations for different protocols depending on the application. Header modules are currently available for the CC-Link, Modbus TCP and Profibus open networks. The STlite series therefore provides a perfect basis for demanding applications. System components from third-party manufacturers can also be incorporated without difficulty.

Secure investment

The fieldbus-independent node design enables you to easily switch to new bus standards. In doing so, the I/O modules can be retained for other applications.



Easy and efficient configuration with GX Configurator STlite.



Head stations are available for different fieldbus systems

Fast and efficient configuration

The powerful GX Configurator STlite software package is available for parameterising all head stations and I/O modules in the STlite series. This enables a complete STlite I/O system to be easily and efficiently configured in just a few minutes. The software is user-friendly and enables even newcomers to become quickly familiar with the system.

GX Configurator STlite is an easy-to-use Windows application for setting up and representing a node without needing to connect the node to a fieldbus system. The software reads the configuration from the node and displays it graphically on the screen. The graphical display can be printed out together with a configuration list to form the documentation.

GX Configurator STlite enables you to display and specify the process data for individual bus terminals. It also enables you to check the field wiring, including all sensors and actuators, and quickly localise any faults at the commissioning stage.

Application-specific settings, such as the baud rate selection or the type of sensor, can be made for certain interface, PT100/RTD and thermocouple modules.

GX Configurator STlite communicates with the node by means of a communications cable connected from the coupler to a free serial or USB port on the PC.

Overview and specifications ///

ST series and STlite

The established and well proven ST series continues to be available along with the STlite series. The table below gives a comparison of the two ranges. You will find further information on our website www.mitsubishi-automation.com and in the current "Automation Book" product catalogue.

Input/output modules	STlite	ST
Supported networks	CC-Link, Profibus DP, Ethernet	CC-Link, Profibus DP
Maximum number of I/O stations per network	CC-Link: 42 (remote I/O stations), Profibus DP: 99 (max. 32 per segment), Ethernet: limited by Ethernet specification	CC-Link: 42 (remote I/O stations), Profibus DP: 99 (max. 32 per segment)
Maximum number of STlite I/O modules per station	63	63
Maximum number of digital inputs and outputs per station	CC-Link: 14 bytes in, 14 bytes out; Profibus: 32 bytes in, 32 bytes out; Ethernet: 1020 words in, 1020 words out	252
Maximum number of analog inputs and outputs per station	CC-Link: 32 bytes in, 32 bytes out; Profibus: 32 bytes in, 32 bytes out; Ethernet: 1020 words in, 1020 words out	52
Number of inputs or outputs on the available modules	2, 4 or 8 I/O points	2, 4, 16 or 32 I/O points
Suitable sensors (digital inputs)	Source type transducers	Source type transducers
Output types (digital outputs)	Transistor (source type), relay	Transistor (source type), relay
Suitable sensors (analog inputs)	Voltage, current, thermocouple, resistance thermometer	Voltage, current, thermocouple, resistance thermometer
Analog outputs	Voltage, current	Voltage, current
Special function modules available	Incremental encoder, absolute value module with SSI encoder interface, up/down counter, PT100/RTD temperature module	Absolute value module with SSI encoder interface
Power supply	24 V DC	24 V DC
Connection	Spring terminals from the CAGE CLAMP® system	Spring terminals, screw terminals
Additional items	Terminal labels, potential markers, WSB markers	Terminal labels, potential markers, screen termination for screened cables
Accessories	STlite can be expanded using any Wago 750-series modules	—

EUROPEAN BRANCHES

MITSUBISHI ELECTRIC EUROPE B.V. Gothaer Straße 8 D-40880 Ratingen Phone: +49 (0)2102 / 486-0	GERMANY
MITSUBISHI ELECTRIC EUROPE B.V.-org.sl Radlická 714/113a CZ-158 00 Praha 5 Phone: +420 - 251 551 470	CZECH REP.
MITSUBISHI ELECTRIC EUROPE B.V. 25, Boulevard des Bouvets F-92741 Nanterre Cedex Phone: +33 (0)1 / 55 68 55 68	FRANCE
MITSUBISHI ELECTRIC EUROPE B.V. Viale Colleoni 7 I-20041 Agrate Brianza (MB) Phone: +39 039 / 60 53 1	ITALY
MITSUBISHI ELECTRIC EUROPE B.V. Krakowska 50 PL-32-083 Balice Phone: +48 (0)12 / 630 47 00	POLAND
MITSUBISHI ELECTRIC EUROPE B.V. 52, bld. 3 Kosmodamijskaya nab 8 floor RU-115054 Moscow Phone: +7 495 721-2070	RUSSIA
MITSUBISHI ELECTRIC EUROPE B.V. Carrereta de Rubi 76-80 E-08190 Sant Cugat del Vallés (Barcelona) Phone: 902 131121 // +34 935653131	SPAIN
MITSUBISHI ELECTRIC EUROPE B.V. Travellers Lane UK-Hatfield, Herts. AL10 8XB Phone: +44 (0)1707 / 27 61 00	UK

EUROPEAN REPRESENTATIVES

GEVA Wiener Straße 89 AT-2500 Baden Phone: +43 (0)2252 / 85 55 20	AUSTRIA	Beijer Electronics A/S Lykkegårdsvej 17 DK-4000 Roskilde Phone: +45 (0)46 / 75 76 66	DENMARK	ALFATRADE Ltd. 99, Paola Hill Malta- Paola PLA 1702 Phone: +356 (0)21 / 697 816	MALTA	Sirius Trading & Services Aleea Lacul Morii Nr. 3 RO-060841 Bucuresti, Sector 6 Phone: +40 (0)21 / 430 40 06	ROMANIA	Omni Ray AG Im Schörl 5 CH-8600 Dübendorf Phone: +41 (0)44 / 802 28 80	SWITZERLAND	ILAN & GAVISH Ltd. 24 Shenkar St., Kiryat Arie IL-49001 Petah-Tiqva Phone: +972 (0)3 / 922 18 24	ISRAEL
TECHNIKON Oktyabrskaya 19, Off. 705 BY-220030 Minsk Phone: +375 (0)17 / 210 46 26	BELARUS	Beijer Electronics Eesti OÜ Pämu mnt.160i EE-11317 Tallinn Phone: +372 (0)6 / 51 81 40	ESTONIA	INTEHISIS srl bld. Traian 23/1 MD-2060 Kishinev Phone: +373 (0)22 / 66 4242	MOLDOVA	INEA RBT d.o.o. Izletnicka 10 SER-113000 Smederevo Phone: +381 (0)26 / 615 401	SERBIA	GTS Bayraktar Bulvarı Nutuk Sok. No:5 TR-34775 Yukarı İSTANBUL Phone: +90 (0)216 526 39 90	TURKEY	GIRIT CELADON LTD 12 Haomanut Street IL-42505 Netanya Phone: +972 (0)9 / 863 39 80	ISRAEL
ESCO D & A Culliganlaan 3 BE-1831 Diegem Phone: +32 (0)2 / 717 64 30	BELGIUM	Beijer Electronics OY Peltioie 37 FIN-28400 Ulvila Phone: +358 (0)207 / 463 540	FINLAND	HIFLEX AUTOM. B.V. Wolveveerstraat 22 NL-2984 CD Ridderkerk Phone: +31 (0)180 - 46 60 04	NETHERLANDS	SIMAP s.r.o. Jána Derku 1671 SK-911 01 Trenčín Phone: +421 (0)32 743 04 72	SLOVAKIA	CSC Automation Ltd. 4-B, M. Raskovoyi St. UA-02660 Kiev Phone: +380 (0)44 / 494 33 55	UKRAINE	CEG INTERNATIONAL Cebaco Center/Block A Autostrade DORA Lebanon - Beirut Phone: +961 (0)1 / 240 430	LEBANON
Koning & Hartman b.v. Woluwelaan 31 BE-1800 Vilvoorde Phone: +32 (0)2 / 257 02 40	BELGIUM	UTECO 5, Mavrogenous Str. GR-18542 Piraeus Phone: +30 211 / 1206 900	GREECE	Koning & Hartman b.v. Haarlerbergweg 21-23 NL-1101 CH Amsterdam Phone: +31 (0)20 / 587 76 00	NETHERLANDS	PROCONT, spol. s co. Prešov Küpeľná 1/A SK-080 01 Prešov Phone: +421 (0)51 7580 611	SLOVAKIA	Systemgroup 2 M. Krivonosy St. UA-03680 Kiev Phone: +380 (0)44 / 490 92 29	UKRAINE	CBI Ltd. Private Bag 2016 ZA-1600 Isando Phone: +27 (0)11 / 977 0770	SOUTH AFRICA
INEA RBT d.o.o. Aleja Lipa 56 BA-71000 Sarajevo Phone: +387 (0)33 / 921 164	BOSNIA AND HERZEG.	MELTRADE Kft. Fertő utca 14. HU-1107 Budapest Phone: +36 (0)1 / 431-9726	HUNGARY	Beijer Electronics AS Postboks 487 NO-3002 Drammen Phone: +47 (0)32 / 24 30 00	NORWAY	INEA RBT d.o.o. Stegne 11 SI-1000 Ljubljana Phone: +386 (0)1 / 513 8116	SLOVENIA	Beijer Electronics AB Box 426 SE-20124 Malmö Phone: +46 (0)40 / 35 86 00	SWEDEN		
AKHNATON 4, Andrei Ljapchev Blvd., PO Box 21 BG-1756 Sofia Phone: +359 (0)2 / 817 6000	BULGARIA	100 Kazpromatomatika Ul. Zhambyla 28 KAZ-100017 Karaganda Phone: +7 7212 / 50 10 00	KAZAKHSTAN	Fonseca S.A. R. João Francisco do Casal 87/89 PT - 3801-997 Aveiro, Esqueiroa Phone: +351 (0)234 / 303 900	PORTUGAL						
INEA RBT d.o.o. Losinjka 4 a HR-10000 Zagreb Phone: +385 (0)1 / 36 940 -01/-02/-03	CROATIA	Beijer Electronics SIA Ritausmas iela 23 LV-1058 Riga Phone: +371 (0)784 / 2280	LATVIA								
AutoCont. S.s.r.o. Technologická 374/6 CZ-708 00 Ostrava-Pustkovec Phone: +420 595 691 150	CZECH REPUBLIC	Beijer Electronics UAB Savanoriu Pr. 187 LT-02300 Vilnius Phone: +370 (0)5 / 232 3101	LITHUANIA								



Version check



Mitsubishi Electric Europe B.V. /// FA - European Business Group /// Gothaer Straße 8 /// D-40880 Ratingen /// Germany
Tel.: +49(0)2102-4860 /// Fax: +49(0)2102-4861120 /// info@mitsubishi-automation.com /// www.mitsubishi-automation.com

Specifications subject to change /// Art. no. 247443-A /// 04.2012

All trademarks and copyrights acknowledged.