

CL1Y2-T1D2S CC-Link/LT Remote I/O Module

Please read this manual thoroughly before starting to use the product and handle the product properly.

User's Manual

MODEL CL1Y2-T1D2S MANUAL Number JY997D04001L Date November 2021

SAFETY PRECAUTIONS

Read these precautions before using. Please read this manual carefully and pay special attention to safety in order to handle this product properly.

- WARNING Procedures which may lead to a dangerous condition and cause death or serious injury if not carried out properly. CAUTION Procedures which may lead to a dangerous condition and cause superficial to medium injury, or physical damage only, if not carried out properly.

Depending on circumstances, procedures indicated by CAUTION may also be linked to serious results. In any case, it is important to follow the directions for usage.

DESIGN PRECAUTIONS

- WARNING Configure an interlock circuit in a sequence program so that the system operates on the safety side using the communication status information in the event the data link fails into a communication problem.

- CAUTION Do not have control cables and connection cables bundled with or placed near by the main circuit and/or power cables.

INSTALLATION PRECAUTIONS

- CAUTION Use the module in an environment that meets the general specifications contained in this manual.

WIRING PRECAUTIONS

- WARNING Perform installation and wiring after disconnecting the power supply at all phases externally.

CAUTION

- Perform correct wiring for the module according to the product's rated voltage and terminal arrangement.

STARTING AND MAINTENANCE PRECAUTIONS

WARNING

- Do not touch the terminals when the power is ON. It may cause an electric shock or malfunction.

CAUTION

- Do not disassemble or modify the module. Doing so may cause failure, malfunction, injury, or fire.

DISPOSAL PRECAUTIONS

CAUTION

- When disposing of this product, treat it as industrial waste.

TRANSPORTATION AND MAINTENANCE PRECAUTIONS

CAUTION

- During transportation avoid any impact as the module is a precision instrument. Doing so could cause trouble in the module.

Compliance with EC directive (CE marking)

This notification does not guarantee that an entire mechanical module produced in accordance with the contents of the notification comply with the following standards.

Standards with which this product complies: Type : Programmable Controller (Open Type Equipment) Remote I/O module Models : Products manufactured from November 1st, 2002 to April 30th, 2006 are compliant with EN61000-6-4:2001 and EN61131-2:1994+A11:1996+A12:2000

Table with 2 columns: Electromagnetic Compatibility Directive (EMC) and Remark. Lists standards like EN61000-6-4:2001 and EN61131-2:1994+A11:1996/A12:2000.

Notes for compliance to EMC directive: It is necessary to install the CL1 series module in a shielded metal control panel.

- Use this product in Zone A as defined in EN61131-2.

- Zone defined in EN61131-2. Separation defined in EN61131-2 for EMC LVD regulation decided depending on condition in industrial setting.

Compliance with UKCA marking

The requirements for compliance with UKCA marking are the same as that with EC directive (CE marking).

Outline of Product

This product is a cable type output module connected to CC-Link/LT. This product has two output points (transistor output).

Name and Setting of Each Part

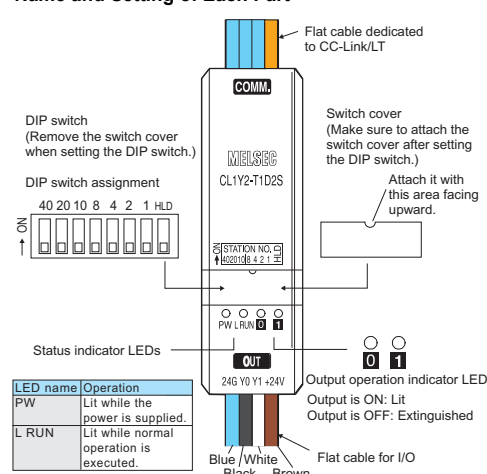


Table with 2 columns: Name and Description. Lists components like Status indicator LED, Output operation indicator LED, Flat cable dedicated to CC-Link/LT, and Flat cable for I/O with their settings.

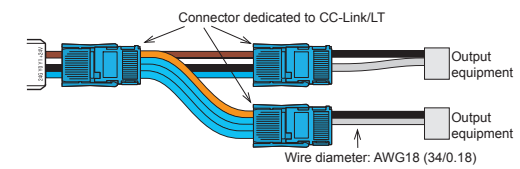
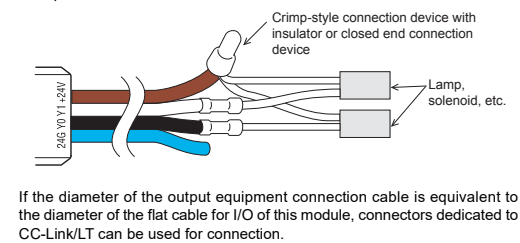
Table with 2 columns: Name and Description. Details DIP switch settings for Station No. and 1's digit.

Cautions on Handling

Handling of flat cable for I/O

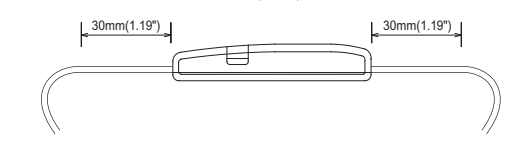
The cable length from the module to a sensor shall be within 3m(9'10"). Measure the cable outside the module, and confirm that the driving voltage for the used sensor is assured.

Output



Handling of cable

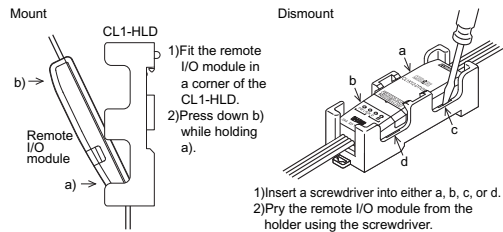
Do not bend the cable within 30mm(1.19") from the module.



Use a crimp-style terminal in a status in which no force is applied on the cable.

3.3 Mounting with the CL1-HLD (module holder)

Refer to the figures below for details on mounting or removing the remote I/O module when used with the CL1-HLD.

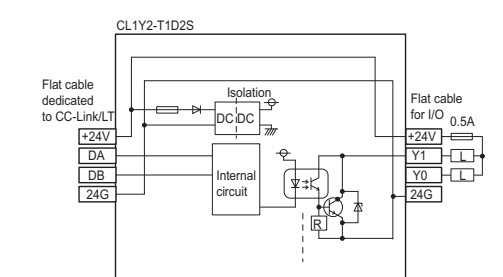


4. Wiring

4.1 External wiring

The output terminals of the CL1Y2-T1D2S operate while using the power supplied from the interface. The output wiring is fixed to the sink output.

Output wiring



5. Specifications

5.1 General specifications

Table of general specifications including Ambient working temperature (0 to 55°C), Ambient storage temperature (-25 to 75°C), and Vibration resistance (10 to 57Hz).

Notes:

- The criterion is shown in IEC61131-2. The module cannot be used in an environment pressurized above the atmospheric pressure which can be generated around the altitude of 0 m.

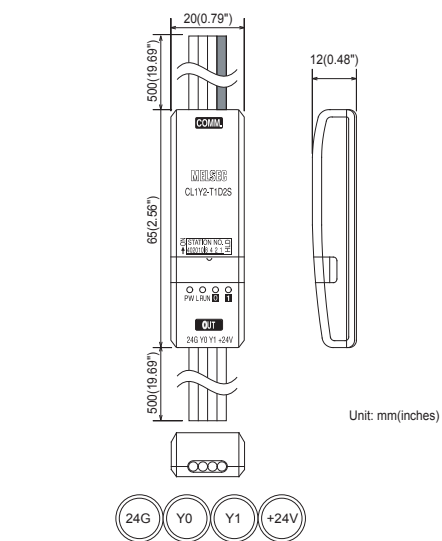
5.2 Output specifications

Table of output specifications including Output method (Transistor output), Rated load voltage (24V DC), and Max. inrush current (0.4A/10 ms).

5.3 Performance specifications

Table of performance specifications including Voltage (20.4 to 28.8V DC), Current consumption (40mA), and Withstand voltage (500V AC for 1 min).

6. Outside Dimensions



「电器电子产品有害物质限制使用标识要求」的表示方式. Note: This symbol mark is for China only. Table of restricted substances: Lead (Pb), Mercury (Hg), Cadmium (Cd), Hexavalent Chromium (Cr(VI)), Polybrominated Biphenyls (PBB), and Polybrominated Diphenyl Ethers (PBDE).

Table of Mitsubishi Electric Corporation offices worldwide. Includes Country/Region, Sales office, and contact information.

MITSUBISHI ELECTRIC CORPORATION HEAD OFFICE: TOKYO BUILDING, 2-7-3 MARUNOUCHI, CHIYODA-KU, TOKYO 100-8310, JAPAN

When exported from Japan, this manual does not require application to the Ministry of Economy, Trade and Industry for service transaction permission.