

Mobile App

Pocket GOT Operating Manual

-GOT2000 Series (GT27, GT25, GT23 (Some Functions Only), and GT21 (Some Functions Only))
-GT SoftGOT2000 (Some Functions Only)
-GOT SIMPLE Series (Some Functions Only)
-Android™

SAFETY PRECAUTIONS

Always read the precautions before using this product.

Also read this manual and the relevant manuals mentioned in this manual carefully, and use the product properly while paying full attention to safety.

Note that the precautions in this manual apply only to this product.


The safety precautions are divided into the following levels: warnings and cautions.



Indicates that incorrect handling may cause hazardous conditions, resulting in death or severe injury.



Indicates that incorrect handling may cause hazardous conditions, resulting in minor or moderate injury or property damage.

Note that failure to observe  CAUTION may lead to a serious accident depending on the circumstances.

Make sure to observe both warnings and cautions to ensure personal safety.

Ensure that this manual is easily accessible to all users of this product.

[Precautions for Remote Control]

WARNING

- Remote control is available through a network by using GOT functions, including the SoftGOT-GOT link function, the remote personal computer operation function, the VNC server function, and the GOT Mobile function.

If these functions are used to perform remote control of control equipment, the field operator may not notice the remote control, possibly leading to an accident.

In addition, a communication delay or interruption may occur depending on the network environment, and remote control of control equipment cannot be performed normally in some cases.

Before using the above functions to perform remote control, fully grasp the circumstances of the field site and ensure safety.

- When operating the server (GOT) of the GOT Mobile function to disconnect a client, notify the operator of the client about the disconnection beforehand.
Not doing so may cause an accident.

[Design Precautions]

WARNING

- To maintain the security (confidentiality, integrity, and availability) of the GOT and the system against unauthorized access, DoS^{*1} attacks, computer viruses, and other cyberattacks from unreliable networks and devices via network, take appropriate measures such as firewalls, virtual private networks (VPNs), and antivirus solutions.

Mitsubishi Electric shall have no responsibility or liability for any problems involving GOT trouble and system trouble by unauthorized access, DoS attacks, computer viruses, and other cyberattacks.

*1 DoS: A denial-of-service (DoS) attack disrupts services by overloading systems or exploiting vulnerabilities, resulting in a denial-of-service (DoS) state.

[Precautions for Exclusive Authorization Control]

WARNING

- Make sure to fully understand the GOT network interaction function before using this function to control the authorization among pieces of equipment to prevent simultaneous operations. The exclusive authorization control of the GOT network interaction function can be enabled or disabled for each screen. (For all screens, the exclusive authorization control is disabled by default.) Properly determine the screens for which the exclusive authorization control is required, and set the control by screen. A screen for which the exclusive authorization control is disabled can be operated simultaneously from pieces of equipment. Make sure to determine the operation period for each operator, fully grasp the circumstances of the field site, and ensure safety to perform operations.
-

CONTENTS

SAFETY PRECAUTIONS	1
INTRODUCTION	5
RELEVANT MANUALS	5
TERM	6
CHAPTER 1 FEATURES	7
CHAPTER 2 INSTALLATION PROCEDURE OF POCKET GOT	9
CHAPTER 3 START AND DISPLAY SCREEN OF POCKET GOT	11
CHAPTER 4 SETUP FOR USING POCKET GOT	13
4.1 GOT Settings	14
4.2 Mobile Terminal Settings (Wi-Fi Setting)	16
4.3 Registration of Basic Settings	18
4.4 Registration of Alarm Notification Setting	20
4.5 Working Memo Transmission Setting	21
4.6 GOT Mobile Connection Setting	22
4.7 Updating and Deleting the Connection Setting	23
CHAPTER 5 ALARM RECEPTION	25
5.1 Checking Received Alarms	25
5.2 Checking Alarms of Each GOT	26
5.3 Changing the GOT to be Monitored	28
5.4 Receiving Notifications on a Smart Watch via the Mobile Terminal	29
5.5 Precautions	30
CHAPTER 6 SENDING WORKING MEMO	31
6.1 Working Memo Screen Display	31
6.2 Functions of Working Memo	32
6.3 Menu for Working Memo	33
6.4 Interacting with Process Remote Monitoring	34
CHAPTER 7 DISPLAYING MOBILE SCREEN	35
7.1 How to Display Mobile Screen	35
CHAPTER 8 TROUBLESHOOTING	37
CHAPTER 9 RESTRICTIONS	39
CHAPTER 10 OPEN SOURCE SOFTWARE	41
10.1 Arc.UserDialogs	41
10.2 NETStandard.Library	41
10.3 Newtonsoft.Json	42
10.4 Prism.Unity.Forms	42
10.5 ReactiveProperty	43
10.6 Rg.Plugins.Popup	43
10.7 System.ComponentModel.Annotations	44

10.8	System.Threading.Tasks.Extensions	.44
10.9	Xamarin.Essentials	.45
10.10	Xamarin.Forms	.45
	REVISIONS	.47
	TRADEMARKS	.48

INTRODUCTION

Thank you for downloading Pocket GOT Mobile App (hereafter referred to as Pocket GOT).

This manual describes the features of Pocket GOT, installation procedure, uninstallation procedure, and how to use the app. Before using the product, read this manual carefully and make sure you understand the functions and performance of Pocket GOT for correct use.

RELEVANT MANUALS

The following shows the manuals relevant to this product.

If you need the printed manuals, consult your local sales office.

Manual list

Point

e-Manual

e-Manual refers to the Mitsubishi Electric FA electronic book manuals that can be browsed using a dedicated tool.

e-Manual has the following features:

Required information can be cross-searched in multiple manuals.

Other manuals can be accessed from the links in the manual.

Hardware specifications of each part can be found from the product figures.

Pages that users often browse can be bookmarked.

■GOT manuals

Manual name	Manual number (Model code)	Format
GT Designer3 (GOT2000) Screen Design Manual	SH-081220ENG (1D7ML9)	PDF e-Manual
GT SoftGOT2000 Version1 Operating Manual	SH-081201ENG	PDF e-Manual

■Manual related to iQ Monozukuri Process Remote Monitoring

Manual name	Manual number (Model code)	Format
Instruction manual for iQ Monozukuri Process Remote Monitoring	SH-082168ENG	PDF e-Manual

TERM

Unless otherwise specified, this manual uses the following terms.

Term	Description
Pocket GOT	A mobile application that can be run on Android OS
iQ Monozukuri Process Remote Monitoring	An application package to collect multiple production line information on a personal computer through the on-site GOTs and display the information on a GT SoftGOT2000 module in the computer to monitor the lines or manage the process
Working memo	Information recorded using the working memo function of Pocket GOT Daily work reports, field equipment status reports, and other information can be recorded with texts and images from a mobile terminal.
User alarm	Alarms set by the user and collected on the GOT A user-created comment can be displayed as an alarm message when an alarm occurs. Pocket GOT's user alarm receive function enables you to check the user alarm occurring in the GOT on a mobile terminal.
GOT Mobile function	A function for monitoring connected devices from an information device (such as a tablet device) via GOTs
VNC server function	A function to operate GOTs remotely from a personal computer, which is in a remote location, via Ethernet using Virtual Network Computing (VNC)
GT SoftGOT2000	An abbreviation for the monitoring software, GT SoftGOT2000 Version1 GT SoftGOT2000 is the software that has the same functions as the GOT2000 Series and is used to display lamps, data, and messages on personal computers and panel controllers.
GT Designer3	Software to design screens for the GOT2000 Series

1 FEATURES

Receiving user alarms

Pocket GOT is a mobile application that collects the conditions of user alarms occurring in the GOT being monitored, and notifies the users with sound and vibration when a new alarm is detected.

The latest five alarms that are currently occurring can be checked in a list.

Up to 20 GOTs can be registered in Pocket GOT.

By using the GOT Mobile function, you can check the status of the GOT where the user alarm has occurred on the mobile terminal.

For the details of the GOT Mobile function, refer to the following.

 GT Designer3 (GOT2000) Screen Design Manual

The following shows which models support alarm receiving and the GOT Mobile function.

○: Available, ×: Not available

Model	Availability
GT27	○
GT25	○
GT23	×
GT21	×
GT SoftGOT2000	○*1
GS21	×

*1 It is recommended to use GT SoftGOT2000 (Multiple channels) for GT SoftGOT2000.

Point

Pocket GOT's user alarm receive function uses the GOT Mobile function to receive alarms.

To use the GOT Mobile function, purchase a GOT Mobile function license.

Register the purchased license number to the monitored GOT.

Sending working memos

The working memos of Pocket GOT can be used to share the information on the on-site equipment and status report at the time of error occurrence.

The following working memos can be created with the mobile application Pocket GOT.

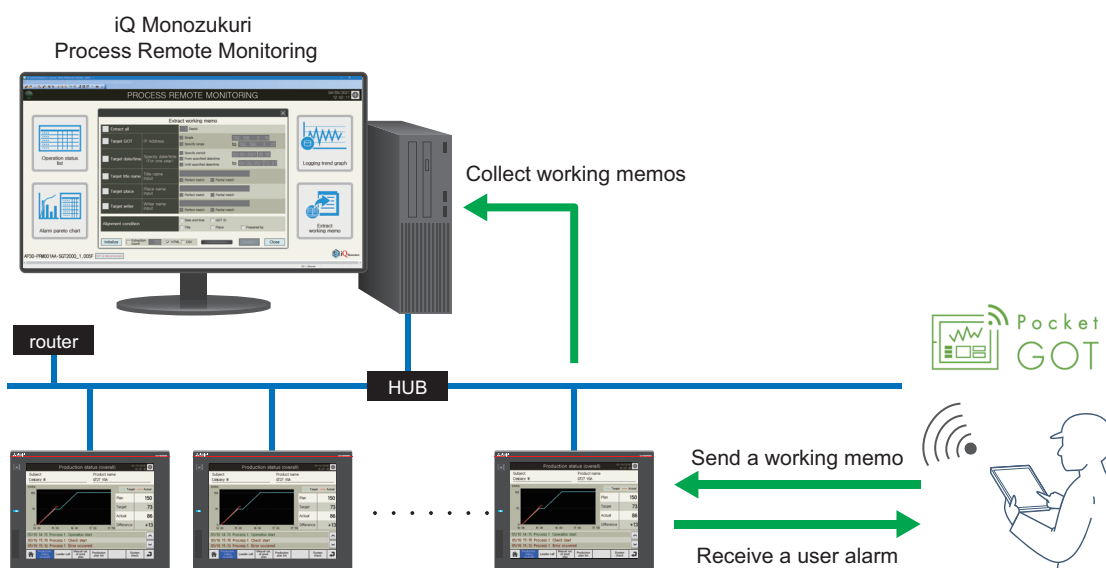
- Text memo
- Memo with pictures taken
- Memo with images saved in the mobile terminal

The created working memos can be sent to the connected GOT using the FTP function of the GOT and saved in the SD card installed in the GOT.

iQ Monozukuri Process Remote Monitoring collects the working memos saved in the SD card of the GOT so that they can be checked at once on the personal computer.

For the details of iQ Monozukuri Process Remote Monitoring, refer to the following.

[Instruction manual for iQ Monozukuri Process Remote Monitoring](#)



The following shows which models support working memo.

○: Available, △: Available to some models only, ×: Not available

Model	Availability
GT27	○
GT25	○
GT23	○
GT21	△*1
GT SoftGOT2000	×
GS21	○

*1 Only available to the following models that support the FTP server function.

- GT2107-W
- GT2104-R
- GT2104-PMBD
- GT2103-PMBD

2 INSTALLATION PROCEDURE OF POCKET GOT

Install Pocket GOT to the mobile terminal.

Check Google Play for the operating environment of the Android OS mobile terminal to which Pocket GOT is to be installed.

Download from Google Play

Download Pocket GOT from Google Play and install it to the mobile terminal.

1. Enter [MITSUBISHI ELECTRIC CORPORATION] in Google Play, and search for the Pocket GOT application.
2. Download the application, and Pocket GOT is installed.

Check that the icon of Pocket GOT is displayed on the home screen.



Update

Update Pocket GOT when the latest version is released.

After the update is complete, check that Pocket GOT is updated to the latest version.

Uninstall

Select Pocket GOT and uninstall it.

MEMO

3 START AND DISPLAY SCREEN OF POCKET GOT

Starting Pocket GOT

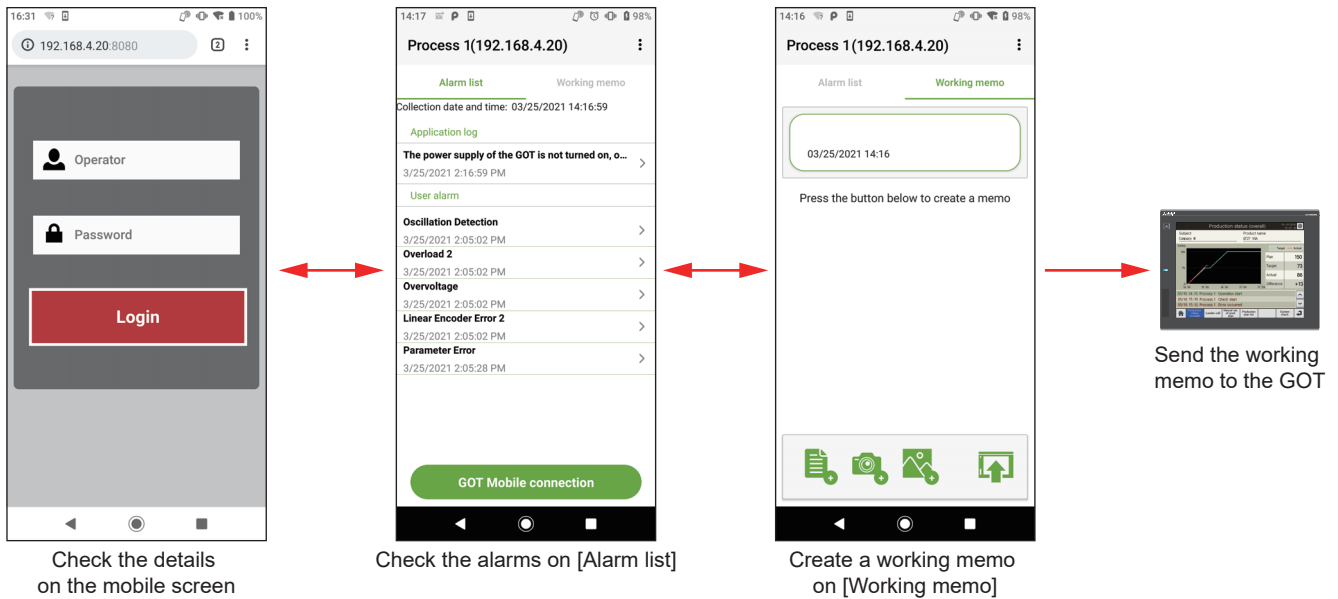
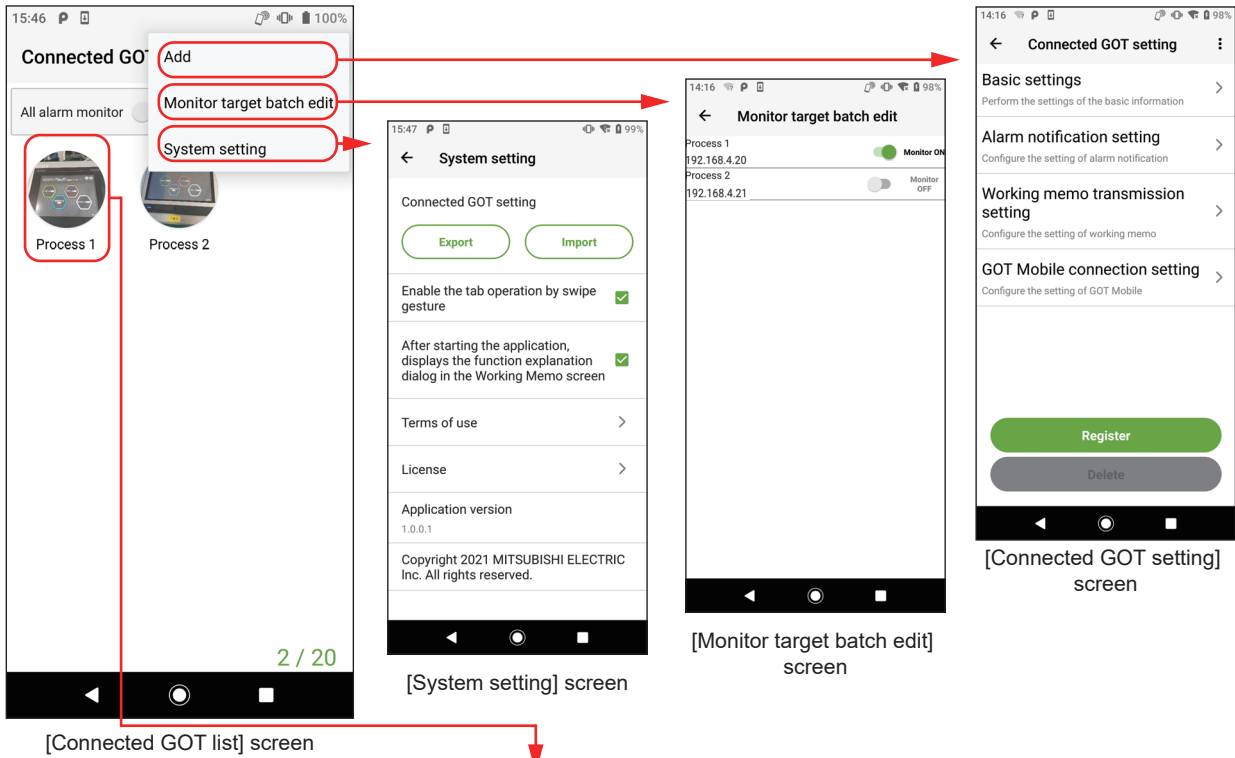
Tap the icon of Pocket GOT on the home screen of the mobile terminal.



Display screen

When Pocket GOT is started, the [Connected GOT list] screen is displayed.

The following screens can be displayed by operating the [Connected GOT list] screen.



4 SETUP FOR USING POCKET GOT

This chapter describes the settings for using the GOT as an access point.

Required devices

Prepare the following devices before configuring the settings.

- Personal computer on which GT Designer3 is installed
- GOT to which a wireless LAN communication unit is connected
- Mobile terminal (Android device) on which Pocket GOT is installed

Setting procedure

The following describes the setting procedure to use Pocket GOT.

1. GOT settings

Configure the settings required for the GOT to communicate with Pocket GOT.

☞ Page 14 GOT Settings

2. Mobile terminal settings

Configure the settings required for the mobile terminal to communicate with the GOT.

☞ Page 16 Mobile Terminal Settings (Wi-Fi Setting)

3. Pocket GOT settings

Configure the settings required to use Pocket GOT on the mobile terminal.

☞ Page 18 Registration of Basic Settings

☞ Page 20 Registration of Alarm Notification Setting

☞ Page 21 Working Memo Transmission Setting

☞ Page 22 GOT Mobile Connection Setting

4.1 GOT Settings

Configure the GOT settings required to receive alarms and send working memos with Pocket GOT.
Configure the settings with GT Designer3.

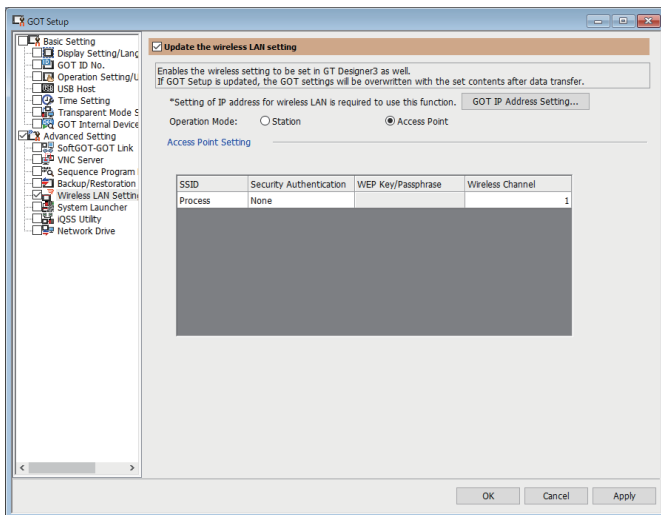
For the details of the setting method, refer to the following manual.

GT Designer3 (GOT2000) Screen Design Manual

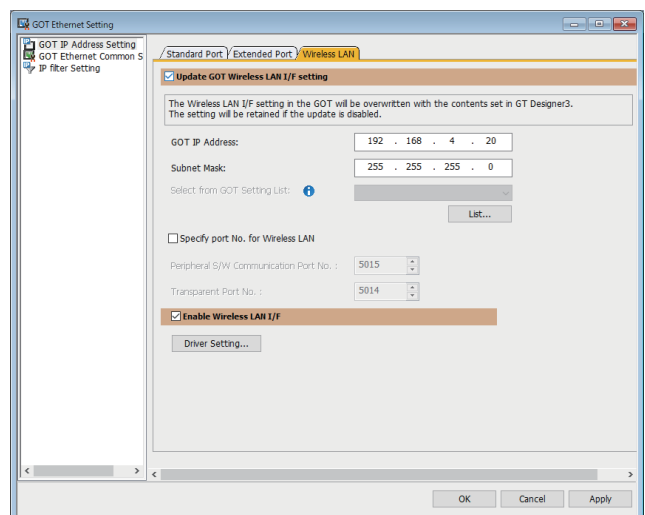
Wireless LAN setting

The GOT operates as a wireless LAN access point.

Connect Pocket GOT and the GOT for which the wireless LAN is set via Wi-Fi.



[GOT Setup]

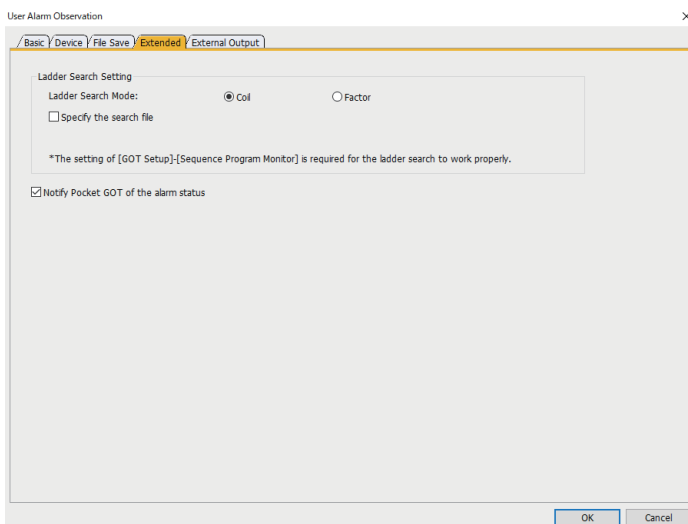


[GOT Ethernet Setting]

User alarm observation

A user-created comment is displayed as an alarm message when an alarm occurs in the GOT.

Pocket GOT receives and displays the alarm occurred in the connected GOT.

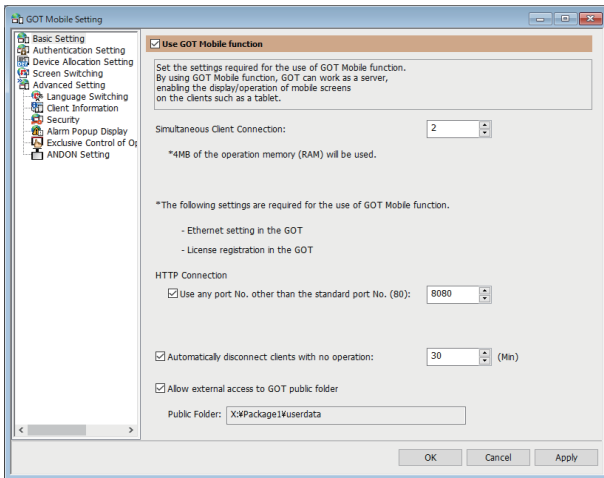


[User Alarm Observation]

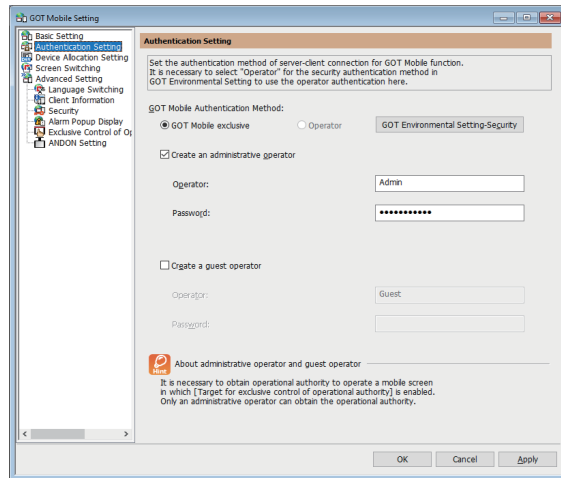
GOT Mobile function

The GOT operates as a GOT Mobile function server.

Pocket GOT displays the mobile screen of the connected GOT on the browser of the mobile terminal.



[GOT Mobile Setting] ([Basic Setting])

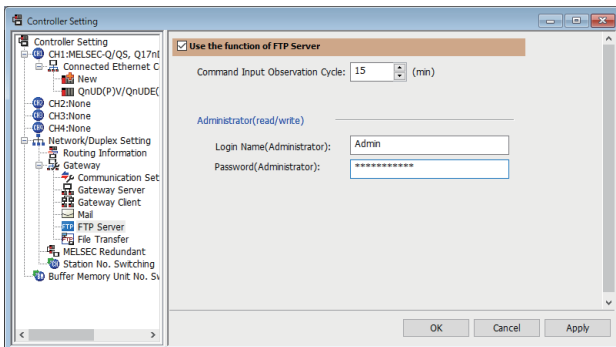


[GOT Mobile Setting] ([Authentication Setting])

FTP server function

You can read/write files from/to an FTP client using the GOT as the FTP server.

Pocket GOT (FTP client) sends working memos to the FTP server (GOT), and saves the memos to the SD card inserted in the GOT.



[Controller Setting]

4.2 Mobile Terminal Settings (Wi-Fi Setting)

Configure the Wi-Fi setting in the mobile terminal to enable connection to the GOT which is set as the access point of the wireless LAN.

Point

The Wi-Fi setting screen differs depending on the mobile terminal.

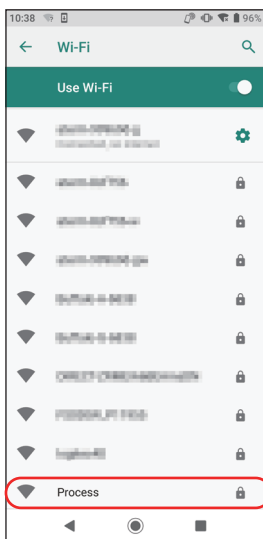
For the details, refer to the manual of the mobile terminal used.

The following model is used in this chapter.

- Manufacturer: SHARP
- Model name: AQUOS Sense3 plus
- Model: SH-RM11
- OS: Android 9

1. Select the GOT to be used as the access point.

Display the Wi-Fi setting screen of the mobile terminal, and tap the name set in [SSID] in [GOT Setup] in GT Designer3.

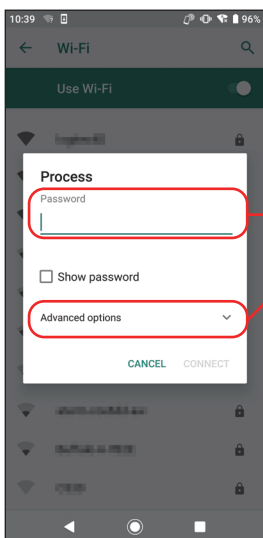


Tap the name set in [SSID]

2. Set the details of the access point.

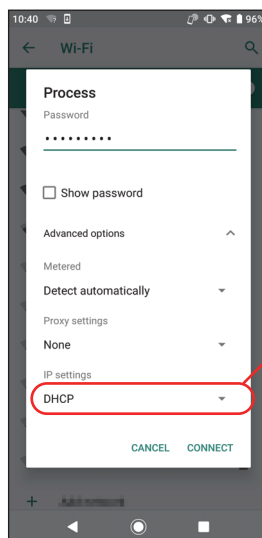
Enter [Password], tap [Advanced options], and change [IP settings] from [DHCP] to [Static].

Then, the IP address of the mobile terminal can be set.



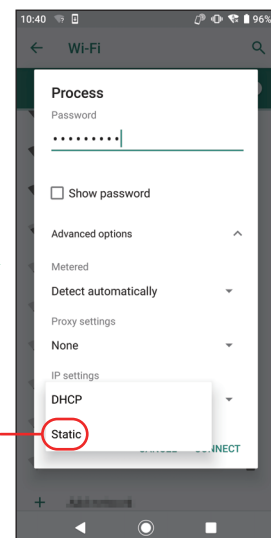
Enter [Password]

Tap [Advanced options]



Tap [DHCP] in [IP settings]

Tap [Static]



3. Set the IP address of the mobile terminal.

Set the first to third octets to the same values as the IP address of the GOT.

Set the fourth octet to a value different from the IP address of the GOT.

The following shows the setting example when the IP address of the GOT is set to [192.168.4.20].

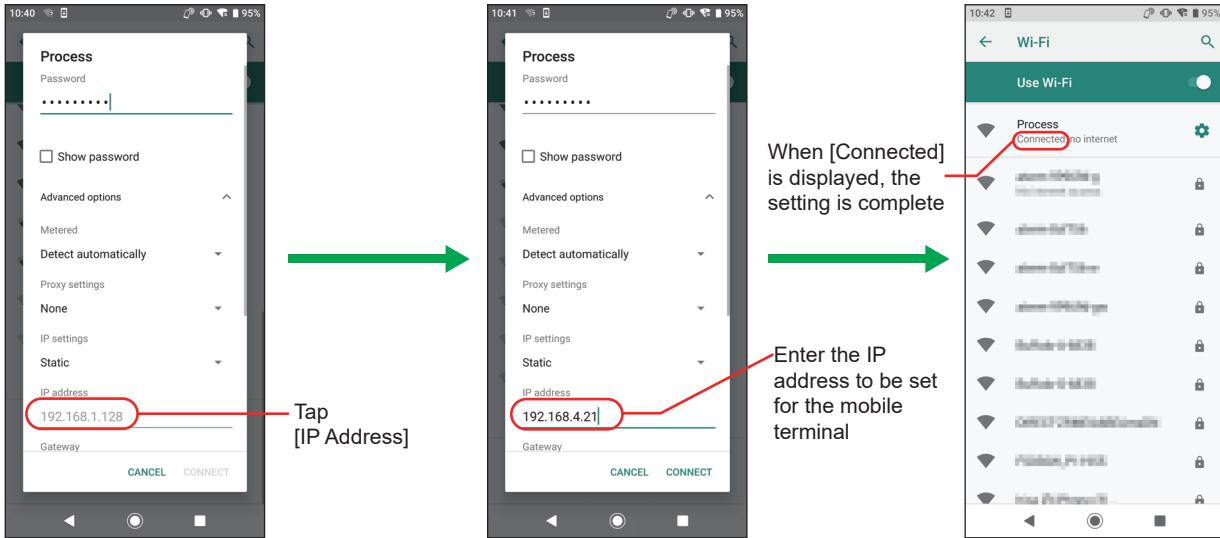
GOT IP address : 192.168.4.20

Mobile terminal IP address : 192.168.4.21

Set a different value from the GOT IP address

Set the same values as the GOT IP address

Return to the Wi-Fi setting screen. If [Connected] is displayed, the access point setting is complete.

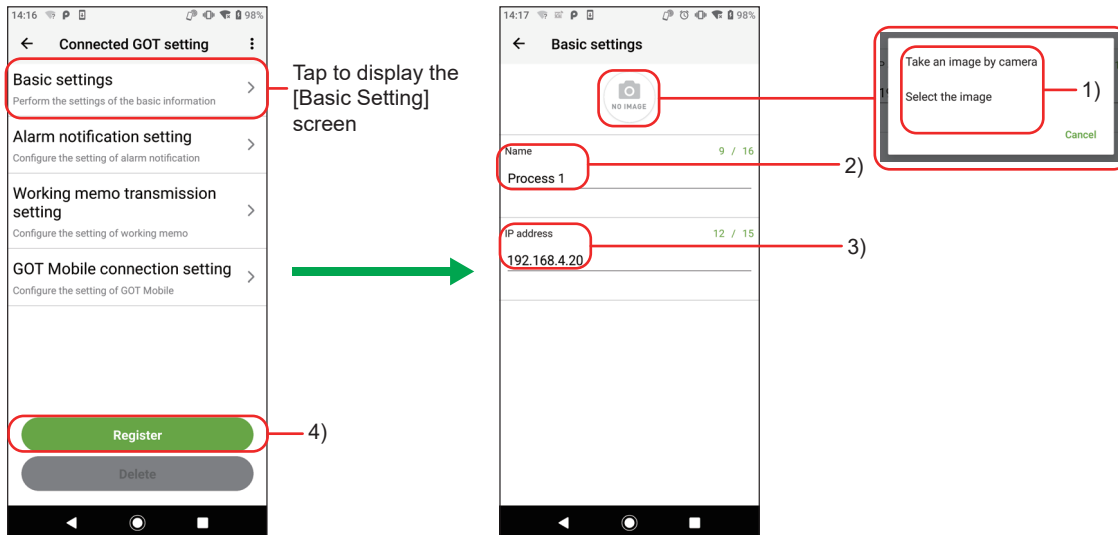


4.3 Registration of Basic Settings

Configure the settings required to register the basic settings of the connected GOT.

Registration of a new connection

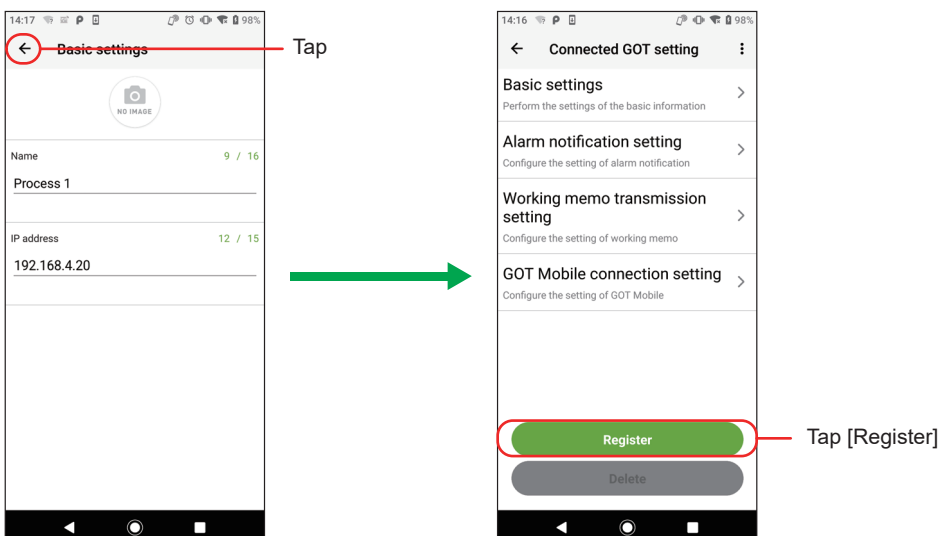
1. Tap [Basic settings] on the [Connected GOT setting] screen.
2. Set each item on the [Basic settings] screen.



No.	Item	Description
1)	Display image	Set the image to be displayed on the [Connected GOT list] screen.
2)	[Name]	Set a name of the connected GOT.
3)	[IP address]	Set the IP address of the connected GOT.
4)	[Register]	Register the information set in the [Basic settings] screen.

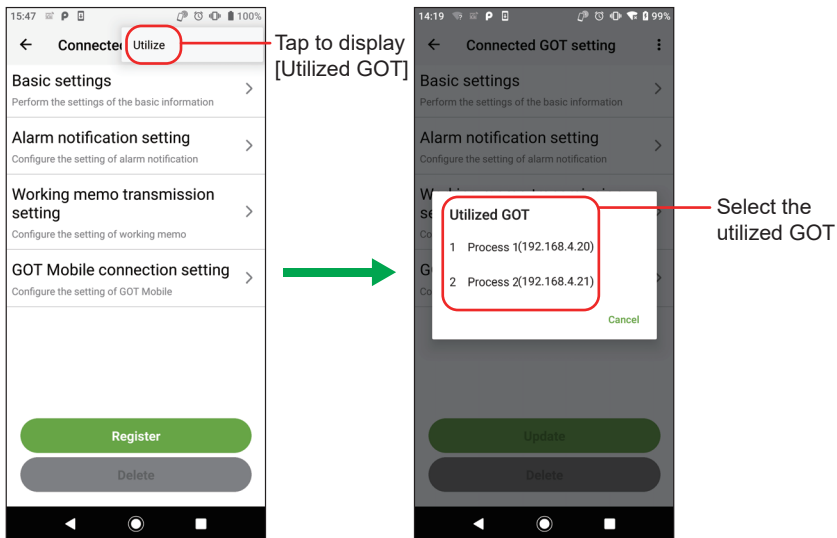
3. After entering each item, tap the arrow on the upper-left corner of the [Basic settings] screen to return to the [Connected GOT setting] screen.

Tap [Register] on the [Connected GOT setting] screen to complete the utilization registration.

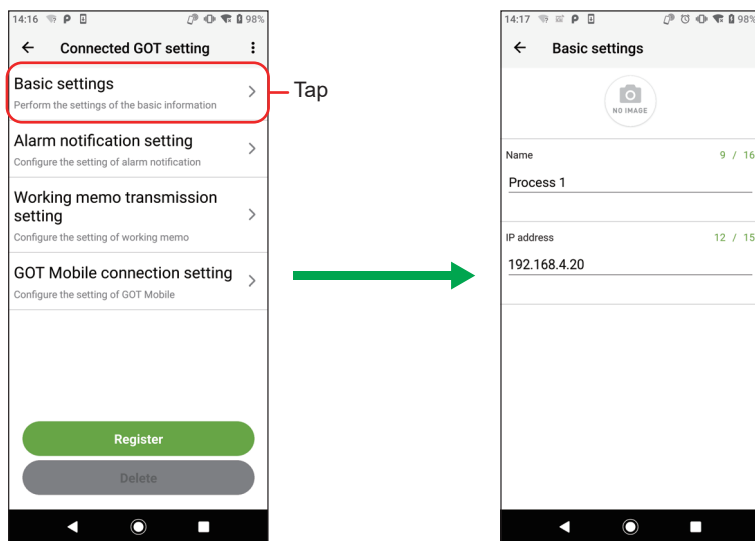


Registration by utilizing the registered connection

1. Tap [Utilize] from the menu on the [Connected GOT setting] screen.
2. [Utilized GOT] is displayed. Select the source GOT from the list of registered GOTs.



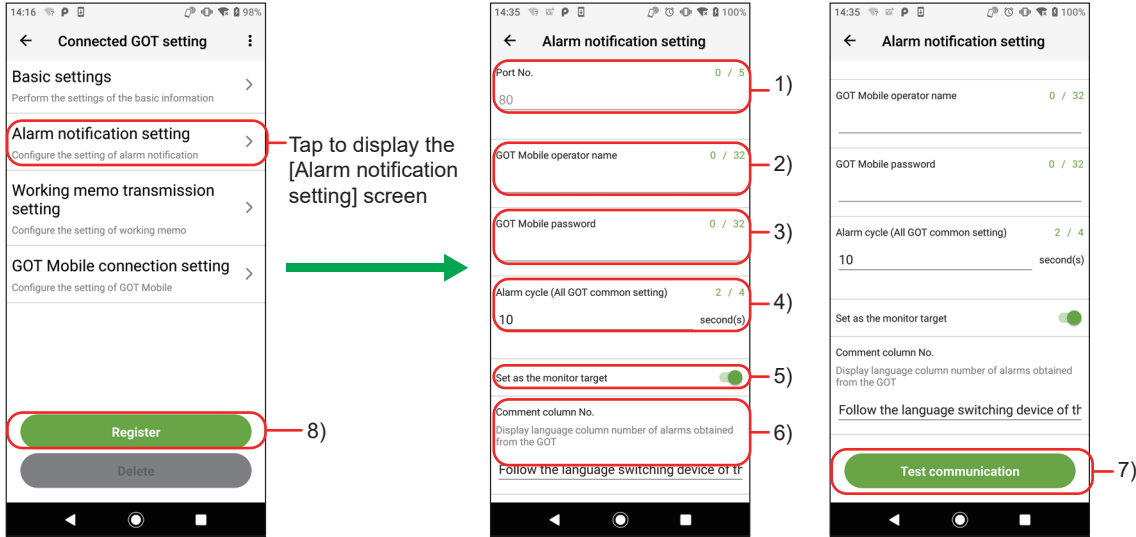
3. Tap [Basic settings] on the [Connected GOT setting] screen displayed. The [Basic settings] screen of the source GOT is displayed. Utilize the settings and register them. The items to be set are the same as those for a new registration.



4.4 Registration of Alarm Notification Setting

Configure the settings required to register the alarm notification setting.

1. Tap [Alarm notification setting] on the [Connected GOT setting] screen.
2. Set each item on the [Alarm notification setting] screen.

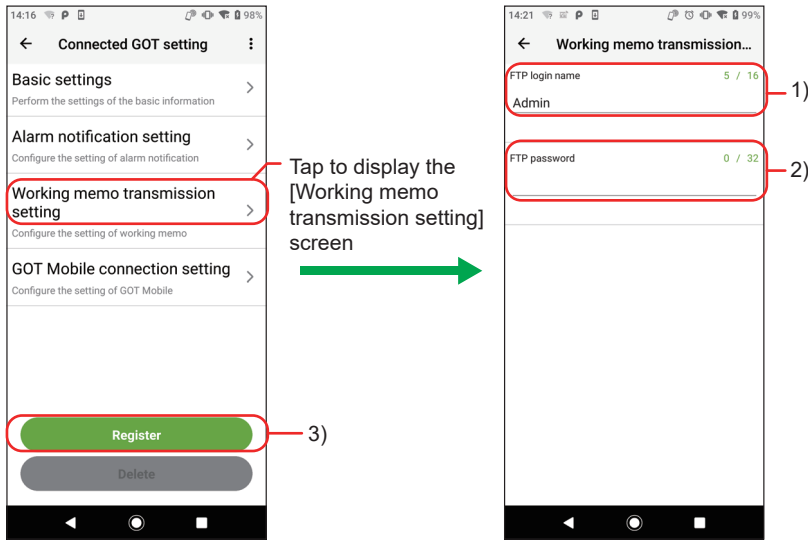


No.	Item	Description
1)	[Port No.]	Set the port number to communicate with the GOT.
2)	[GOT Mobile operator name]	Set the operator name to log in to the GOT Mobile.
3)	[GOT Mobile password]	Set the password to log in to the GOT Mobile.
4)	[Alarm cycle (All GOT common setting)]	Set the alarm cycle.
5)	[Set as the monitor target]	Set the GOT as the monitor target.
6)	[Comment column No.]	Select the comment column No. to be displayed in the user alarm.
7)	[Test communication]	Perform a test communication with the GOT.
8)	[Register]	Register the information set in the [Connected GOT setting] screen.

4.5 Working Memo Transmission Setting

Configure the settings required to send working memos.

1. Tap [Working memo transmission setting] on the [Connected GOT setting] screen.
2. Set each item on the [Working memo transmission setting] screen.

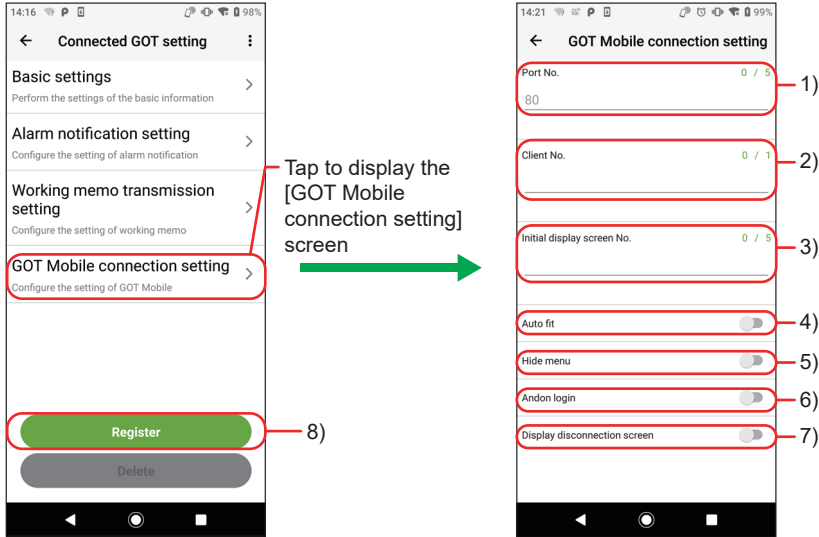


No.	Item	Description
1)	[FTP login name]	Enter the login name to log in to the FTP server (GOT).
2)	[FTP password]	Enter the password to log in to the FTP server (GOT).
3)	[Register]	Register the information set in the [Working memo transmission setting] screen.

4.6 GOT Mobile Connection Setting

Configure the settings required to display the mobile screen.

1. Tap [GOT Mobile connection setting] on the [Connected GOT setting] screen.
2. Set each item on the [GOT Mobile connection setting] screen.



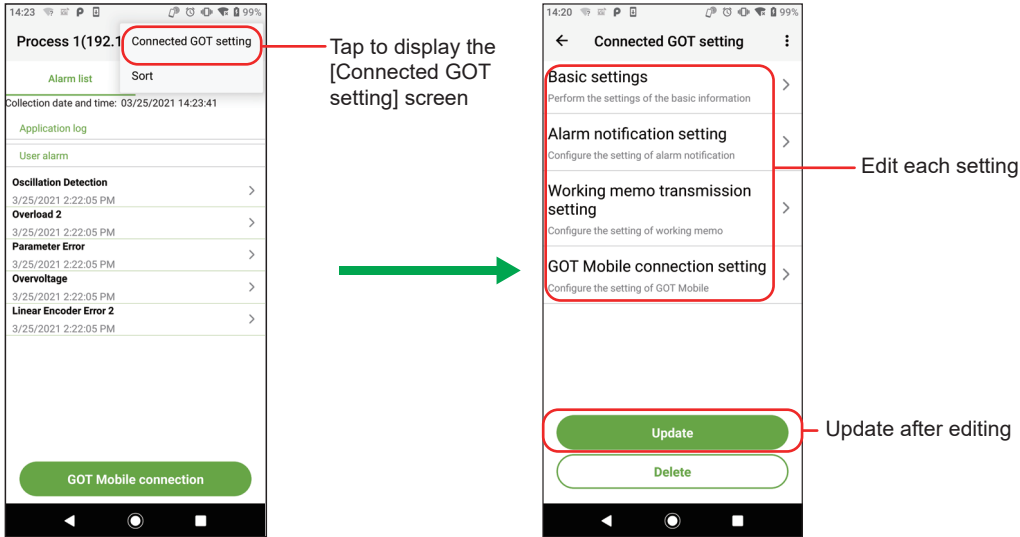
No.	Item	Description
1)	[Port No.]	Set the port number to communicate with the GOT.
2)	[Client No.]	Set the client No. of the GOT Mobile function.
3)	[Initial display screen No.]	Set the number of the mobile screen to be displayed for the first time.
4)	[Auto fit]	Automatically adjusts the mobile screen display according to the screen size of the mobile terminal.
5)	[Hide menu]	Hides the menu when the mobile screen is displayed.
6)	[Andon login]	Displays the mobile screen as an ANDON display.
7)	[Display disconnection screen]	Displays the disconnection screen when the communication of the GOT Mobile function is disconnected.
8)	[Register]	Register the information set in the [GOT Mobile connection setting] screen.

4.7 Updating and Deleting the Connection Setting

Update or delete information of the GOT set on the [Connected GOT list] screen.

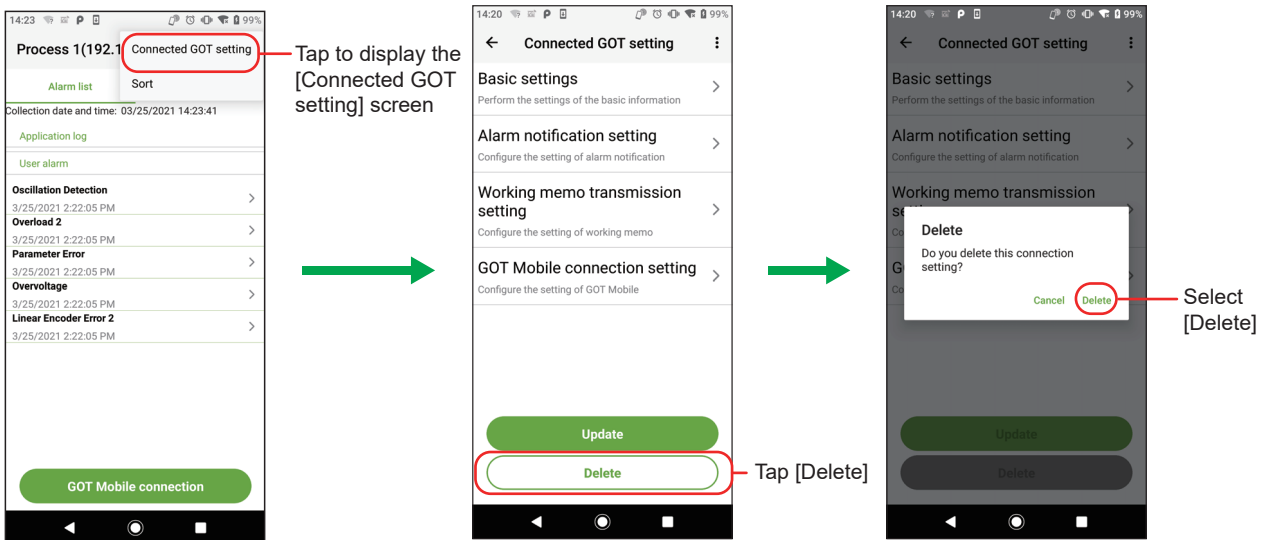
Updating the information of the registered connection

1. Tap [Connected GOT setting] from the menu of [Alarm list] or [Working memo].
2. The [Connected GOT setting] screen is displayed. Edit each setting.
3. After the editing is complete, return to the [Connected GOT setting] screen and tap [Update].



Deleting the registered connection

1. Tap [Connected GOT setting] from the menu of [Alarm list] or [Working memo].
2. The [Connected GOT setting] screen is displayed. Tap [Delete].
3. [Do you delete this connection setting?] is displayed. Select [Delete].



MEMO

5 ALARM RECEPTION

5.1 Checking Received Alarms

New alarms can be checked with the number of GOTs with alarms and status icons on the [Connected GOT list] screen.

When a new alarm is received while the application is hidden, the mobile terminal notification function displays the [There is new information] notification on the lock screen or home screen.

When displaying the application with the [There is new information] notification displayed on the screen, the notification will be deleted.

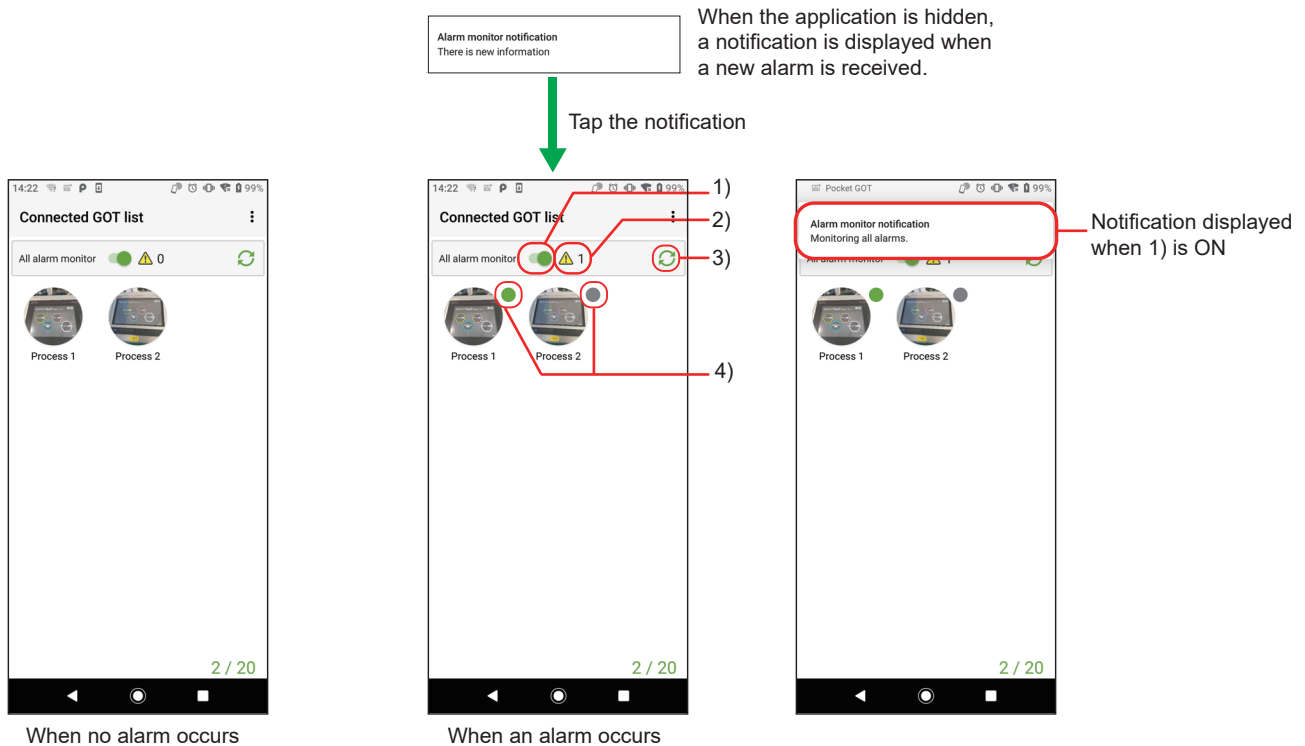
Point

To receive notifications of new alarms, set the mobile terminal not to restrict the use of applications in the background.

It can be set as follows in the case of the reference model (AQUOS Sense3 plus) used in this manual.

[Settings App] → [Apps & notifications] → [Pocket GOT] → [Advanced] → [Battery] → [Background restriction]

5



No.	Item	Description
1)	All alarm monitor button	In the ON state, communication is established with the GOT at the set monitoring cycle to acquire alarm information. During alarm monitoring, the [Monitoring all alarms.] notification is always displayed. In the OFF state, alarm monitoring is not performed.
2)	Number of GOTs with alarms	Displays the number of GOTs with new alarms.
3)	Reload button	Tap this button to start communication with the GOT to be monitored for alarms and acquire information on the alarms that are currently occurring.
4)	Status icon	A green icon is displayed when communication with the GOT is enabled and there is a new alarm. A gray icon is displayed when communication with the GOT is disabled regardless of whether there is a new alarm or not. The icon will be hidden when communication with the GOT is enabled and there are no new alarms, or when new alarms are checked.

5.2 Checking Alarms of Each GOT

Alarm list display

Tap the GOT to be checked for alarms on the [Connected GOT list] screen to display [Alarm list].

The following items are displayed in [Alarm list].

- [Application log]

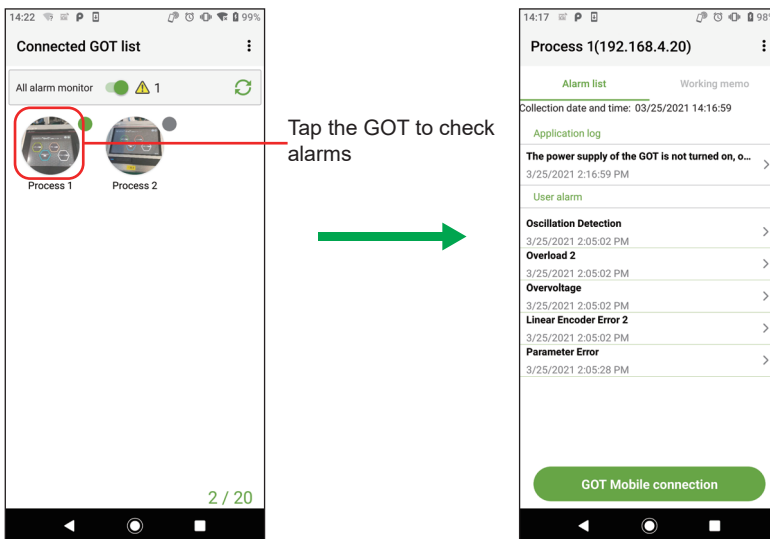
If no alarm can be acquired from the GOT, the cause is displayed.

- [User alarm]

The alarms acquired from the GOT are displayed.

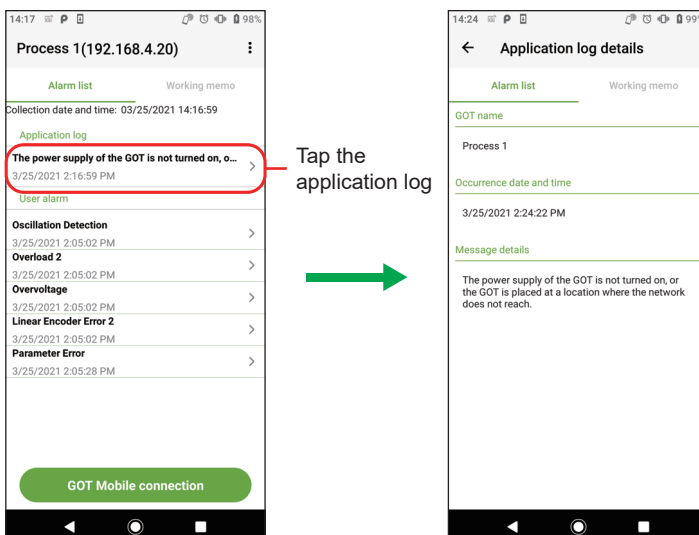
User alarms are displayed for up to 40 alarm IDs.

Up to five alarms can be displayed within one alarm ID.



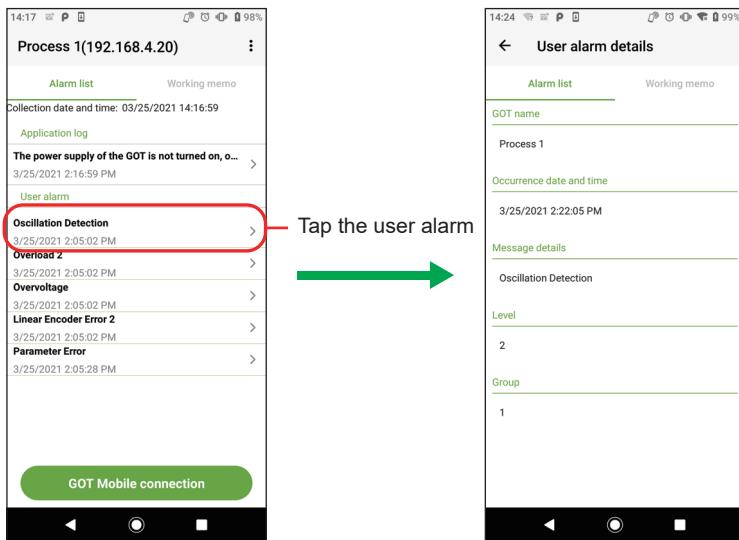
[Application log details] display

Tap the application log displayed on [Alarm list] to display [Application log details].



[User alarm details] display

Tap the user alarm displayed on [Alarm list] to display [User alarm details].

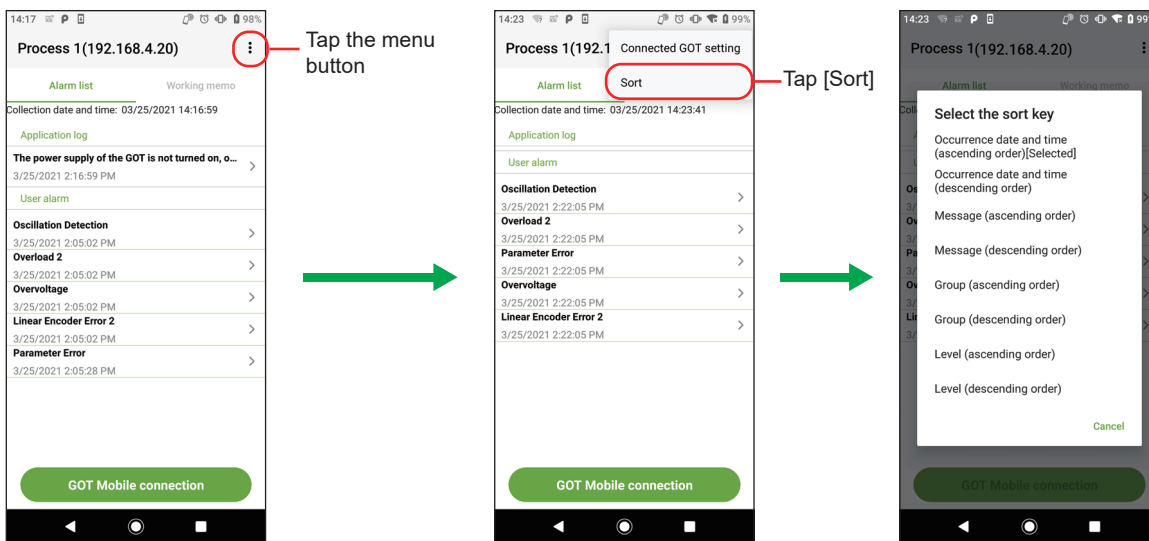


5

Alarm sorting

Tap the menu button on [Alarm list] and tap [Sort] to display [Select the sort key].

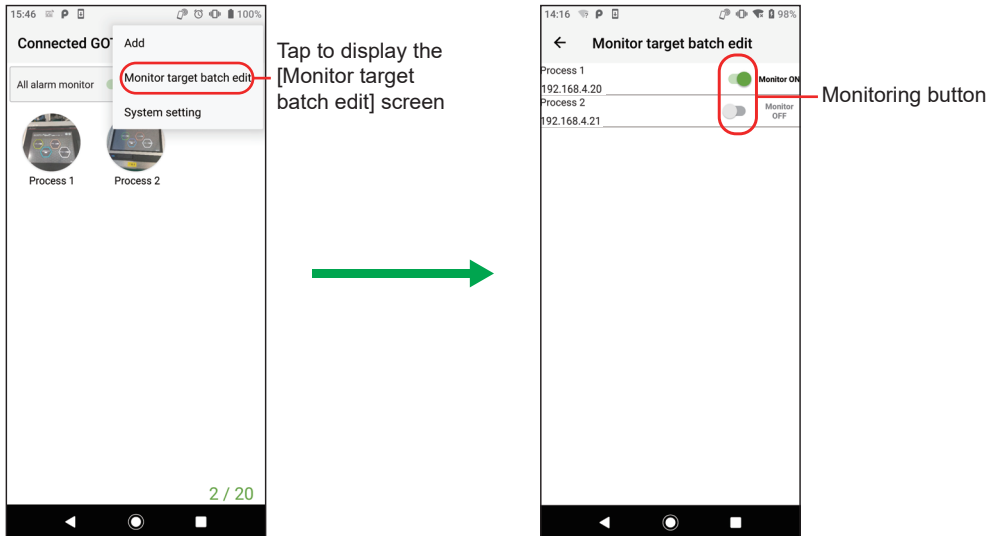
Select the key to sort the alarms.



5.3 Changing the GOT to be Monitored

The following describes how to change the GOT to be monitored.

1. Tap [Monitor target batch edit] in the menu on the [Connected GOT list] screen to display the [Monitor target batch edit] screen.



2. Tap the monitoring button to change the GOT to be monitored.

5.4 Receiving Notifications on a Smart Watch via the Mobile Terminal

Configure the settings so that the notifications displayed on the mobile terminal are notified to a smart watch. This enables the smart watch to receive alarm notifications via the mobile terminal.

When the smart watch receives an alarm notification, it displays [Alarm monitor notification There is new information].

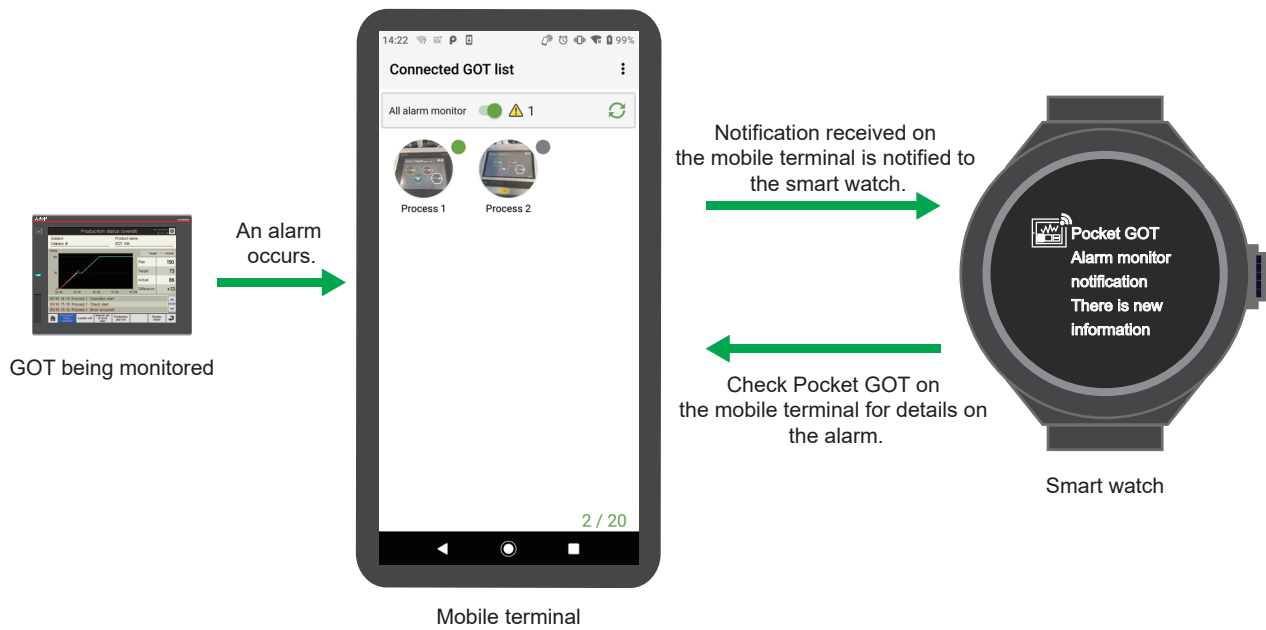
For details on the alarm, check Pocket GOT on the mobile terminal.

Point

For how to configure the settings to notify the notifications displayed on the mobile terminal to a smart watch, refer to the manual of the mobile terminal or the smart watch to be used.

Settings are not required for Pocket GOT.

Direct interaction between the smart watch and GOT is not available.



5.5 Precautions

When a communication error has occurred with 20 mobile terminals connected

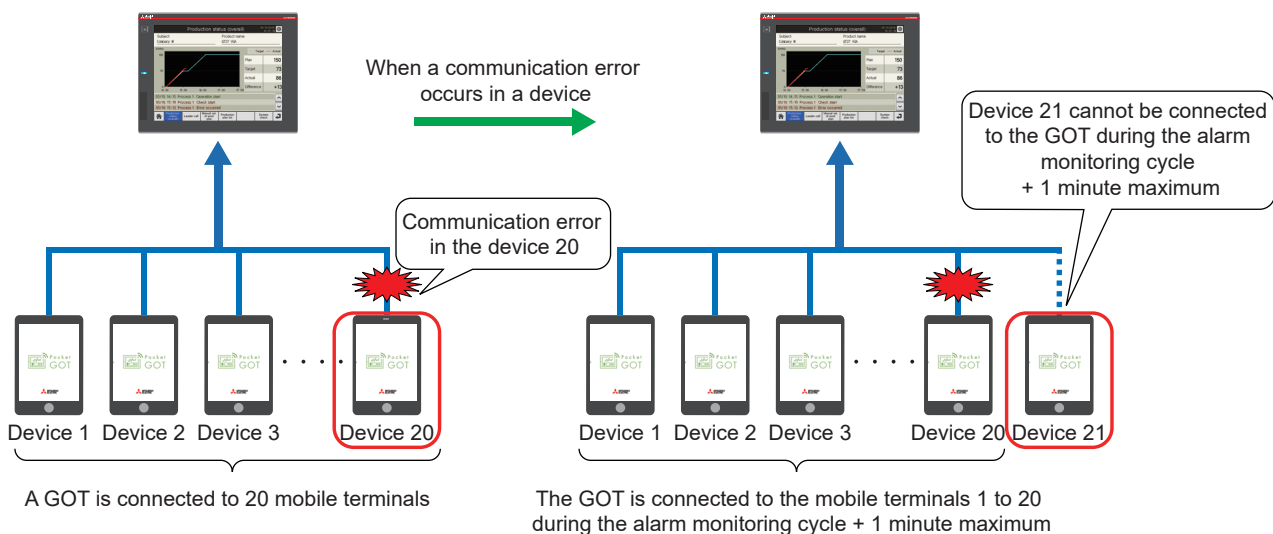
Up to 20 mobile terminals can be connected to one GOT simultaneously.

When a mobile terminal has a communication error, the GOT remains in the connected state during the alarm monitoring cycle + 1 minute maximum.

Therefore, when a communication error occurs in one of the 20 mobile terminals that are connected to one GOT, no additional mobile terminal can be connected during the alarm monitoring cycle + 1 minute maximum.

The following shows an example.

(Example)



Alarm monitoring while the mobile terminal is in sleep mode

The application operates in the background during alarm monitoring.

The operations of this application are restricted during sleep mode by the power saving setting of the mobile terminal and alarms cannot be monitored in the specified cycle.

If there are no alarm notifications during sleep mode, set the mobile terminal not to restrict the use of applications in the background.

Precautions for collection cycle

Depending on the number of GOTs to be monitored for alarms and performance of the mobile terminal on which the application runs, such as a CPU score, number of threads, and memory size, collection may not be possible as specified in the collection cycle setting.

Precautions for connection to GT SoftGOT2000

Up to 20 mobile terminals can be simultaneously connected to one personal computer on which GT SoftGOT2000 runs.

When Pocket GOT and the GOT Mobile function are used, up to 20 mobile terminals can be simultaneously connected to one personal computer on which GT SoftGOT2000 runs.

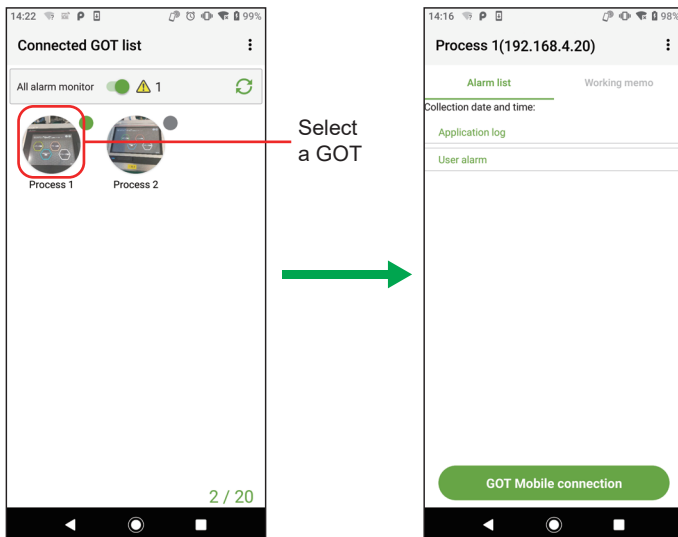
Example: When 15 mobile terminals using the GOT Mobile function are connected, up to 5 mobile terminals using Pocket GOT can be connected.

6 SENDING WORKING MEMO

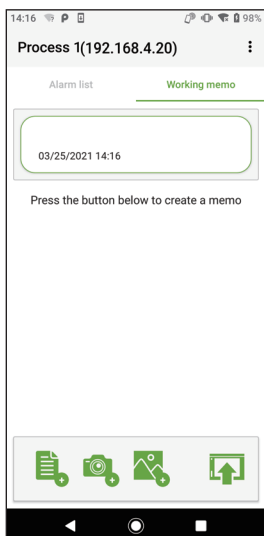
6.1 Working Memo Screen Display

The following describes how to display the working memo screen.

1. Select the connected GOT on the [Connected GOT list] screen to display [Alarm list].

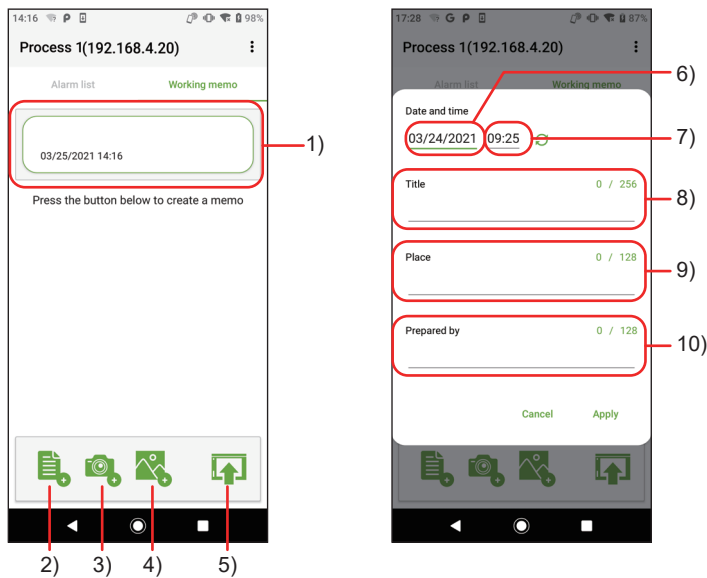


2. Tap the [Working memo] tab and create a working memo.



6.2 Functions of Working Memo

The following describes the functions of the working memo.



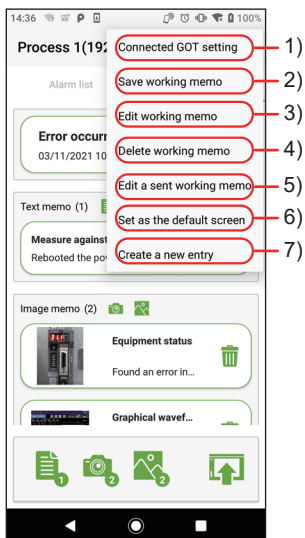
[Working memo]

[Header memo detail edit] screen

No.	Item	Description
1)	Header memo	Displays the [Header memo detail edit] screen for entering the header of the working memo when tapped.
2)	New text memo	Displays the text memo detail edit screen, and registers the created text memo. Up to 15 text memos can be registered.
3)	Camera shooting	Displays the camera shooting screen and registers the captured image as an image memo. Up to 3 images can be registered in combination with image selection.
4)	Image selection	Displays the image selection screen, and registers the selected image as an image memo. Up to 3 images can be registered in combination with camera shooting.
5)	Send working memo	Sends the created working memo and saves it to the SD card inserted in the GOT.
6)	Date	Set the date to be displayed in the header memo.
7)	Time	Set the time to be displayed in the header memo.
8)	[Title]	Enter the title to be displayed in the header memo.
9)	[Place]	Enter the place to be displayed in the header memo.
10)	[Prepared by]	Enter the person who filled out the memo to be displayed in the header memo.

6.3 Menu for Working Memo

The following shows the menu of the working memo.




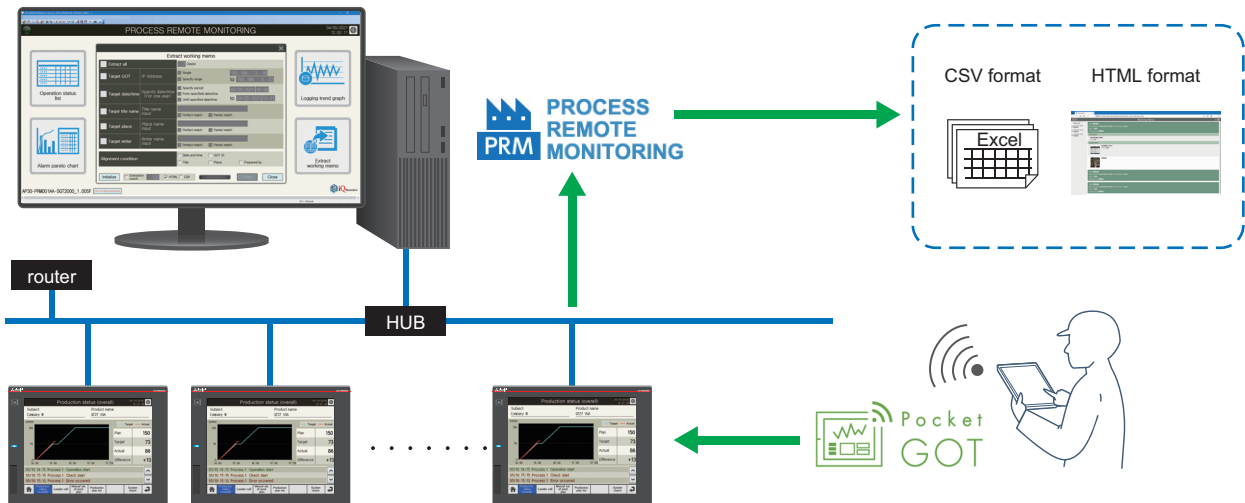
No.	Item	Description
1)	[Connected GOT setting]	Displays the [Connected GOT setting] screen.
2)	[Save working memo]	Saves the working memo being edited to the mobile terminal.
3)	[Edit working memo]	Opens the list of saved working memos. Select the one to display and edit.
4)	[Delete working memo]	Opens the list of saved working memos. Select the one to delete.
5)	[Edit a sent working memo]	Opens the list of working memos saved in the SD card inserted in the GOT. Select the one to display and edit.
6)	[Set as the default screen]	Sets the screen currently displayed as the default screen to be displayed when the [Working memo] tab is opened.
7)	[Create a new entry]	Deletes the current edition and displays a new working memo.

6.4 Interacting with Process Remote Monitoring

The equipment status on the GOT recorded in the working memo is collected by iQ Monozukuri Process Remote Monitoring, and can be checked at once on the personal computer.

For the details of the Process Remote Monitoring, refer to the following.

 Instruction manual for iQ Monozukuri Process Remote Monitoring



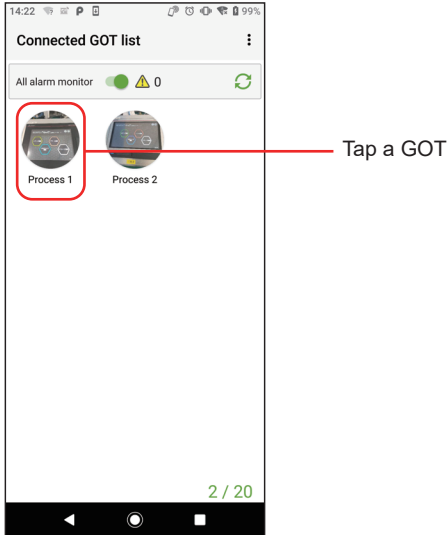
7 DISPLAYING MOBILE SCREEN

The GOT Mobile function is used to monitor controllers from information devices such as tablets through the GOT.

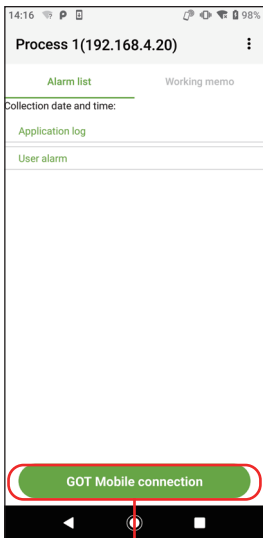
7.1 How to Display Mobile Screen

The following describes how to display the mobile screen.

1. Tap the GOT to be checked on the [Connected GOT list] to display the [Alarm list].

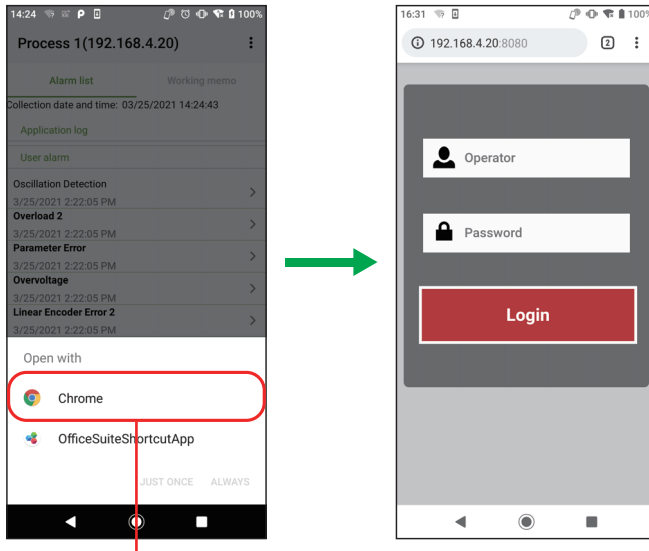


2. Tap [GOT Mobile connection] in [Alarm list].



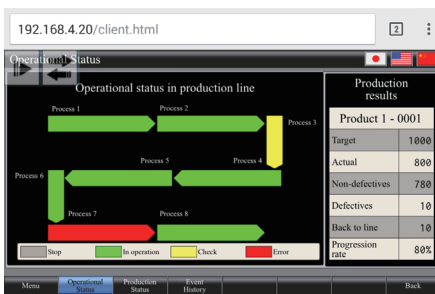
Tap [GOT Mobile connection]

- 3.** When the default browser has been set, the connection authentication screen is displayed.
 When the default browser has not been set, the connection authentication screen is displayed when the browser is selected.
 Select Google Chrome as the browser.



Select the browser to be displayed
 (Only when the default browser is not set) Connection authentication screen

- 4.** After logging into the browser, the mobile screen is displayed.



Display the mobile screen

8 TROUBLESHOOTING

For the troubleshooting for Pocket GOT, refer to the following.

Symptom		Cause	Corrective action
The communication between Pocket GOT and GOT timed out, although it had been possible until now.		The communication between Pocket GOT and GOT has been interrupted.	Check the connection status with the GOT. <ul style="list-style-type: none"> • The power is ON. • The GOT is not offline. • There is no problem with the connection between the access point and GOT. Check the connection status of the mobile terminal. <ul style="list-style-type: none"> • The Wi-Fi connection status is stable.
Pocket GOT cannot communicate with the GOT.	Common	The mobile terminal and GOT are not connected to the same network. (For example, the mobile terminal is not connected to Wi-Fi.)	Connect the GOT and mobile terminal to the same network such as Wi-Fi.
		The IP address is different.	Check the IP address of Pocket GOT and GOT. Set an IP address that can be communicated with.
	Factor on the GOT side	The FTP server setting on the GOT side is not configured. Or, the setting is not correct.	Check the FTP server setting on the GOT side.
	Factor on the mobile terminal side	The information of the GOT registered in Pocket GOT is not correct.	Check that the GOT information is registered correctly in the connected GOT setting of Pocket GOT.
		The FTP server setting of Pocket GOT is not configured. Or, the setting is not correct.	Check that the FTP setting of Pocket GOT is the same as the FTP setting of the GOT.
The Wi-Fi setting on the mobile terminal is not correct although a wireless LAN communication unit is used on the GOT side.	<ul style="list-style-type: none"> • Disable DHCP in the Wi-Fi setting on the mobile terminal side and set the static IP address. • Match the static IP address on the mobile terminal side to the static IP address of the wireless LAN IP address on the GOT side. 		
Additional condition Two or more mobile terminals cannot be connected to GT27 and GT25.	The FTP server (GOT) is being accessed from multiple mobile terminals simultaneously.	Enable multiple access on the GOT side. The number of simultaneously connectable devices can be increased up to four devices using GS404. (GT27 and GT25)	
When an import or export is performed, the directory of the connected GOT information cannot be set in the system setting.		The directory path including the file name (with an extension) is longer than 247 characters.	<ul style="list-style-type: none"> • Select a folder with a short directory path. • Edit the directory path to make it shorter.
When an error occurs in the GOT, it is not notified in the specified cycle.		Pocket GOT operates in the background during alarm monitoring. Due to the setting of the mobile terminal, application operations or wireless LAN may be restricted while the mobile terminal is in sleep mode, and operation cannot be performed according to the specified collection cycle.	Check the setting of the mobile terminal. <ul style="list-style-type: none"> • Clear the setting related to power saving. • Configure the setting to allow background operation of Pocket GOT even during sleep mode. • Configure the setting to maintain the wireless LAN connection even during sleep mode.
		The application notification setting is not allowed.	Check the device setting and allow the Pocket GOT notification.
		The trial period of the GOT Mobile function has expired.	Check the GOT Mobile function license is installed on the GOT to be monitored.
		Pocket GOT was shut down when another application was operated.	Restart Pocket GOT and start monitoring.
Notifications cannot be received on a smart watch.		When the battery capacity is low, the Android OS is in power saving mode.	Check the setting on the device and cancel the power saving mode.
		Pairing between the mobile terminal and smart watch is not established.	Check the pairing between the mobile terminal and smart watch. Establish pairing if it is not established.
		Notification setting is not configured for the smart watch.	Check the notification setting of the mobile terminal and that of the smart watch.
		Notification is not available depending on mobile terminal and smart watch combinations.	Check if notification is available for the mobile terminal and smart watch combination.
		Pairing is canceled when the mobile terminal enters sleep mode.	Check the setting of the mobile terminal. <ul style="list-style-type: none"> • Clear the setting related to power saving. • Turn off the Bluetooth scanning for location information.

Symptom	Cause	Corrective action
The import destination or export destination set in the application with version 1.0.0.0 is not displayed.	The application is compatible with Android 11. Specification of an import destination or export destination is abolished in the application with version 1.0.0.1 or later.	Tap twice [Application version] in the [System setting] screen to display the import destination or export destination set in the application with version 1.0.0.0.
Import or export operation does not work.	For import and export operations, an Android file manager app is used. Some file manager apps may not operate properly. Example: When performing an import or export after deleting a folder or file selected in the file manager app	<ul style="list-style-type: none"> • Update the file manager app version. • User a different file manager app. • Do not delete a folder or file sleeted in the file manager app before import or export operation.

9 RESTRICTIONS

The following shows the restrictions for Pocket GOT.

No.	Item	Description
1	Storage of the mobile terminal	If there is not enough free space for storage, this mobile application may not operate properly.
2	Memory of the mobile terminal	If there is not enough memory for operation, this mobile application may not operate properly. Shut down other mobile applications that are running at the same time to free up memory before using this mobile application.
3	Font size setting of the mobile terminal	When the font size is set to other than the default, the text layout may be broken or the displayed text may be cut off.
4	Continuous tapping of the button	When a button (such as the [Back] button) is tapped quickly in succession, the screen may return multiple times. In this case, data may not be saved or other malfunctions may occur.
5	Operation while the activity indicator is displayed	If the screen is transitioned during processing of this mobile application, the processing may be interrupted. If the processing is interrupted, some buttons cannot be pressed. In this case, restart this mobile application.
6	Resolution	If the resolution of the mobile terminal to be used is low, the screen may not be displayed properly.
7	Mobile application privileges	Some functions cannot be used for this mobile application unless access to the camera and storage and other privileges are enabled. When you enable a privilege while using this mobile application, restart the application. When this mobile application is restarted while it is being used, the interrupted contents may not be saved.
8	Sleep mode of the mobile terminal screen	When the mobile terminal screen is in the sleep mode, it may restrict the operation of this mobile application. This mobile application may not operate properly after returning from the sleep mode.
9	Battery consumption of the mobile terminal	To perform alarm monitoring, the mobile device screen wakes from sleep mode every alarm monitoring cycle. When the set alarm monitoring cycle is short, it may affect the battery consumption.
10	Starting multiple mobile applications	When multiple mobile applications are started, they may be automatically shut down due to the function of Android OS. After operating an application other than this mobile application, check that this mobile application is running.

MEMO

10 OPEN SOURCE SOFTWARE

10.1 Arc.UserDialogs

The MIT License (MIT) Copyright (c) 2016 Allan Ritchie

Permission is hereby granted, free of charge, to any person obtaining a copy of this software and associated documentation files (the "Software"), to deal in the Software without restriction, including without limitation the rights to use, copy, modify, merge, publish, distribute, sublicense, and/or sell copies of the Software, and to permit persons to whom the Software is furnished to do so, subject to the following conditions:

The above copyright notice and this permission notice shall be included in all copies or substantial portions of the Software.

THE SOFTWARE IS PROVIDED "AS IS", WITHOUT WARRANTY OF ANY KIND, EXPRESS OR IMPLIED, INCLUDING BUT NOT LIMITED TO THE WARRANTIES OF MERCHANTABILITY, FITNESS FOR A PARTICULAR PURPOSE AND NONINFRINGEMENT. IN NO EVENT SHALL THE AUTHORS OR COPYRIGHT HOLDERS BE LIABLE FOR ANY CLAIM, DAMAGES OR OTHER LIABILITY, WHETHER IN AN ACTION OF CONTRACT, TORT OR OTHERWISE, ARISING FROM, OUT OF OR IN CONNECTION WITH THE SOFTWARE OR THE USE OR OTHER DEALINGS IN THE SOFTWARE.

10.2 NETStandard.Library

The MIT License (MIT) Copyright (c) .NET Foundation and Contributors

All rights reserved.

Permission is hereby granted, free of charge, to any person obtaining a copy of this software and associated documentation files (the "Software"), to deal in the Software without restriction, including without limitation the rights to use, copy, modify, merge, publish, distribute, sublicense, and/or sell copies of the Software, and to permit persons to whom the Software is furnished to do so, subject to the following conditions:

The above copyright notice and this permission notice shall be included in all copies or substantial portions of the Software.

THE SOFTWARE IS PROVIDED "AS IS", WITHOUT WARRANTY OF ANY KIND, EXPRESS OR IMPLIED, INCLUDING BUT NOT LIMITED TO THE WARRANTIES OF MERCHANTABILITY, FITNESS FOR A PARTICULAR PURPOSE AND NONINFRINGEMENT. IN NO EVENT SHALL THE AUTHORS OR COPYRIGHT HOLDERS BE LIABLE FOR ANY CLAIM, DAMAGES OR OTHER LIABILITY, WHETHER IN AN ACTION OF CONTRACT, TORT OR OTHERWISE, ARISING FROM, OUT OF OR IN CONNECTION WITH THE SOFTWARE OR THE USE OR OTHER DEALINGS IN THE SOFTWARE.

10.3 Newtonsoft.Json

The MIT License (MIT) Copyright © 2020 Newtonsoft

Permission is hereby granted, free of charge, to any person obtaining a copy of this software and associated documentation files (the "Software"), to deal in the Software without restriction, including without limitation the rights to use, copy, modify, merge, publish, distribute, sublicense, and/or sell copies of the Software, and to permit persons to whom the Software is furnished to do so, subject to the following conditions:

The above copyright notice and this permission notice shall be included in all copies or substantial portions of the Software. THE SOFTWARE IS PROVIDED "AS IS", WITHOUT WARRANTY OF ANY KIND, EXPRESS OR IMPLIED, INCLUDING BUT NOT LIMITED TO THE WARRANTIES OF MERCHANTABILITY, FITNESS FOR A PARTICULAR PURPOSE AND NONINFRINGEMENT. IN NO EVENT SHALL THE AUTHORS OR COPYRIGHT HOLDERS BE LIABLE FOR ANY CLAIM, DAMAGES OR OTHER LIABILITY, WHETHER IN AN ACTION OF CONTRACT, TORT OR OTHERWISE, ARISING FROM, OUT OF OR IN CONNECTION WITH THE SOFTWARE OR THE USE OR OTHER DEALINGS IN THE SOFTWARE.

10.4 Prism.Unity.Forms

The MIT License (MIT) Copyright (c) .NET Foundation

All rights reserved. Permission is hereby granted, free of charge, to any person obtaining a copy of this software and associated documentation files (the "Software"), to deal in the Software without restriction, including without limitation the rights to use, copy, modify, merge, publish, distribute, sublicense, and/or sell copies of the Software, and to permit persons to whom the Software is furnished to do so, subject to the following conditions:

The above copyright notice and this permission notice shall be included in all copies or substantial portions of the Software. THE SOFTWARE IS PROVIDED "AS IS", WITHOUT WARRANTY OF ANY KIND, EXPRESS OR IMPLIED, INCLUDING BUT NOT LIMITED TO THE WARRANTIES OF MERCHANTABILITY, FITNESS FOR A PARTICULAR PURPOSE AND NONINFRINGEMENT. IN NO EVENT SHALL THE AUTHORS OR COPYRIGHT HOLDERS BE LIABLE FOR ANY CLAIM, DAMAGES OR OTHER LIABILITY, WHETHER IN AN ACTION OF CONTRACT, TORT OR OTHERWISE, ARISING FROM, OUT OF OR IN CONNECTION WITH THE SOFTWARE OR THE USE OR OTHER DEALINGS IN THE SOFTWARE.

10.5 ReactiveProperty

The MIT License (MIT)

Copyright (c) 2018 neuecc, xin9le, okazuki

Permission is hereby granted, free of charge, to any person obtaining a copy of this software and associated documentation files (the "Software"), to deal in the Software without restriction, including without limitation the rights to use, copy, modify, merge, publish, distribute, sublicense, and/or sell copies of the Software, and to permit persons to whom the Software is furnished to do so, subject to the following conditions:

The above copyright notice and this permission notice shall be included in all copies or substantial portions of the Software.

THE SOFTWARE IS PROVIDED "AS IS", WITHOUT WARRANTY OF ANY KIND, EXPRESS OR IMPLIED, INCLUDING BUT NOT LIMITED TO THE WARRANTIES OF MERCHANTABILITY, FITNESS FOR A PARTICULAR PURPOSE AND NONINFRINGEMENT. IN NO EVENT SHALL THE AUTHORS OR COPYRIGHT HOLDERS BE LIABLE FOR ANY CLAIM, DAMAGES OR OTHER LIABILITY, WHETHER IN AN ACTION OF CONTRACT, TORT OR OTHERWISE, ARISING FROM, OUT OF OR IN CONNECTION WITH THE SOFTWARE OR THE USE OR OTHER DEALINGS IN THE SOFTWARE.

10.6 Rg.Plugins.Popup

The MIT License (MIT) Copyright (c) 2020 Kirill Lyubimov

Permission is hereby granted, free of charge, to any person obtaining a copy of this software and associated documentation files (the "Software"), to deal in the Software without restriction, including without limitation the rights to use, copy, modify, merge, publish, distribute, sublicense, and/or sell copies of the Software, and to permit persons to whom the Software is furnished to do so, subject to the following conditions:

The above copyright notice and this permission notice shall be included in all copies or substantial portions of the Software.

THE SOFTWARE IS PROVIDED "AS IS", WITHOUT WARRANTY OF ANY KIND, EXPRESS OR IMPLIED, INCLUDING BUT NOT LIMITED TO THE WARRANTIES OF MERCHANTABILITY, FITNESS FOR A PARTICULAR PURPOSE AND NONINFRINGEMENT. IN NO EVENT SHALL THE AUTHORS OR COPYRIGHT HOLDERS BE LIABLE FOR ANY CLAIM, DAMAGES OR OTHER LIABILITY, WHETHER IN AN ACTION OF CONTRACT, TORT OR OTHERWISE, ARISING FROM, OUT OF OR IN CONNECTION WITH THE SOFTWARE OR THE USE OR OTHER DEALINGS IN THE SOFTWARE.

10.7 System.ComponentModel.Annotations

The MIT License (MIT) Copyright (c) .NET Foundation and Contributors
All rights reserved.

Permission is hereby granted, free of charge, to any person obtaining a copy of this software and associated documentation files (the "Software"), to deal in the Software without restriction, including without limitation the rights to use, copy, modify, merge, publish, distribute, sublicense, and/or sell copies of the Software, and to permit persons to whom the Software is furnished to do so, subject to the following conditions:

The above copyright notice and this permission notice shall be included in all copies or substantial portions of the Software. THE SOFTWARE IS PROVIDED "AS IS", WITHOUT WARRANTY OF ANY KIND, EXPRESS OR IMPLIED, INCLUDING BUT NOT LIMITED TO THE WARRANTIES OF MERCHANTABILITY, FITNESS FOR A PARTICULAR PURPOSE AND NONINFRINGEMENT. IN NO EVENT SHALL THE AUTHORS OR COPYRIGHT HOLDERS BE LIABLE FOR ANY CLAIM, DAMAGES OR OTHER LIABILITY, WHETHER IN AN ACTION OF CONTRACT, TORT OR OTHERWISE, ARISING FROM, OUT OF OR IN CONNECTION WITH THE SOFTWARE OR THE USE OR OTHER DEALINGS IN THE SOFTWARE.

10.8 System.Threading.Tasks.Extensions

The MIT License (MIT)

Copyright (c) .NET Foundation and Contributors

All rights reserved.

Permission is hereby granted, free of charge, to any person obtaining a copy of this software and associated documentation files (the "Software"), to deal in the Software without restriction, including without limitation the rights to use, copy, modify, merge, publish, distribute, sublicense, and/or sell copies of the Software, and to permit persons to whom the Software is furnished to do so, subject to the following conditions:

The above copyright notice and this permission notice shall be included in all copies or substantial portions of the Software.

THE SOFTWARE IS PROVIDED "AS IS", WITHOUT WARRANTY OF ANY KIND, EXPRESS OR IMPLIED, INCLUDING BUT NOT LIMITED TO THE WARRANTIES OF MERCHANTABILITY, FITNESS FOR A PARTICULAR PURPOSE AND NONINFRINGEMENT. IN NO EVENT SHALL THE AUTHORS OR COPYRIGHT HOLDERS BE LIABLE FOR ANY CLAIM, DAMAGES OR OTHER LIABILITY, WHETHER IN AN ACTION OF CONTRACT, TORT OR OTHERWISE, ARISING FROM, OUT OF OR IN CONNECTION WITH THE SOFTWARE OR THE USE OR OTHER DEALINGS IN THE SOFTWARE.

10.9 Xamarin.Essentials

Xamarin.Essentials

The MIT License (MIT) Copyright (c) Microsoft Corporation

All rights reserved.

Permission is hereby granted, free of charge, to any person obtaining a copy of this software and associated documentation files (the "Software"), to deal in the Software without restriction, including without limitation the rights to use, copy, modify, merge, publish, distribute, sublicense, and/or sell copies of the Software, and to permit persons to whom the Software is furnished to do so, subject to the following conditions:

The above copyright notice and this permission notice shall be included in all copies or substantial portions of the Software. THE SOFTWARE IS PROVIDED "AS IS", WITHOUT WARRANTY OF ANY KIND, EXPRESS OR IMPLIED, INCLUDING BUT NOT LIMITED TO THE WARRANTIES OF MERCHANTABILITY, FITNESS FOR A PARTICULAR PURPOSE AND NONINFRINGEMENT. IN NO EVENT SHALL THE AUTHORS OR COPYRIGHT HOLDERS BE LIABLE FOR ANY CLAIM, DAMAGES OR OTHER LIABILITY, WHETHER IN AN ACTION OF CONTRACT, TORT OR OTHERWISE, ARISING FROM, OUT OF OR IN CONNECTION WITH THE SOFTWARE OR THE USE OR OTHER DEALINGS IN THE SOFTWARE.

10.10 Xamarin.Forms

The MIT License (MIT) Copyright (c) Microsoft Corporation

All rights reserved.

Permission is hereby granted, free of charge, to any person obtaining a copy of this software and associated documentation files (the "Software"), to deal in the Software without restriction, including without limitation the rights to use, copy, modify, merge, publish, distribute, sublicense, and/or sell copies of the Software, and to permit persons to whom the Software is furnished to do so, subject to the following conditions:

The above copyright notice and this permission notice shall be included in all copies or substantial portions of the Software. THE SOFTWARE IS PROVIDED "AS IS", WITHOUT WARRANTY OF ANY KIND, EXPRESS OR IMPLIED, INCLUDING BUT NOT LIMITED TO THE WARRANTIES OF MERCHANTABILITY, FITNESS FOR A PARTICULAR PURPOSE AND NONINFRINGEMENT. IN NO EVENT SHALL THE AUTHORS OR COPYRIGHT HOLDERS BE LIABLE FOR ANY CLAIM, DAMAGES OR OTHER LIABILITY, WHETHER IN AN ACTION OF CONTRACT, TORT OR OTHERWISE, ARISING FROM, OUT OF OR IN CONNECTION WITH THE SOFTWARE OR THE USE OR OTHER DEALINGS IN THE SOFTWARE.

REVISIONS

* The manual number is given on the bottom left of the back cover.

Print date	* Manual No.	Revision
February 2022	SH(NA)-082512ENG-A	First edition

This manual confers no industrial property rights or any rights of any other kind, nor does it confer any patent licenses. Mitsubishi Electric Corporation cannot be held responsible for any problems involving industrial property rights which may occur as a result of using the contents noted in this manual.

©2022 MITSUBISHI ELECTRIC CORPORATION

TRADEMARKS

Microsoft and Windows are either registered trademarks or trademarks of Microsoft Corporation in the United States and/or other countries.

The screens (screenshots) are used in accordance with the Microsoft Corporation guideline.

Unicode is either a registered trademark or a trademark of Unicode, Inc. in the United States and other countries.

Android, Google Chrome, Google Play, and Google Play Logo are either trademarks or registered trademarks of Google LLC.

SHARP and AQUOS are either registered trademarks or trademarks of Sharp Corporation.

The company names, system names and product names mentioned in this technical bulletin are either registered trademarks or trademarks of their respective companies.

In some cases, trademark symbols such as [™] or [®] are not specified in this technical bulletin.

SH(NA)-082512ENG-A(2202)MEE

MODEL: -

MODEL CODE: -

mitsubishi electric corporation

HEAD OFFICE : TOKYO BUILDING, 2-7-3 MARUNOUCHI, CHIYODA-KU, TOKYO 100-8310, JAPAN
NAGOYA WORKS : 1-14, YADA-MINAMI 5-CHOME, HIGASHI-KU, NAGOYA, JAPAN

When exported from Japan, this manual does not require application to the Ministry of Economy, Trade and Industry for service transaction permission.

Specifications subject to change without notice.