

Quickly Identify the Cause of Errors

**Operator Authentication
& Operation Log Functions**



**Facing any of these challenges in
your maintenance work?**

It's tough being asked
for a quick recovery
from the shop floor...

I have no idea who
changed which
settings...

My boss says to
take measures...

Maintenance work
is too tough!



**With GOT, you can
identify the cause of errors from
traceability information!**

Being in charge of maintenance is hard work...



Analyzing past data is not easy either...!



**Relying on operators' memory is
no more an option!!**

Quickly Identify the Cause with GOT!

No Blind Spots with These Two Functions!



Operator Authentication Function

&

Operation Log Function



Login management for GOT operations

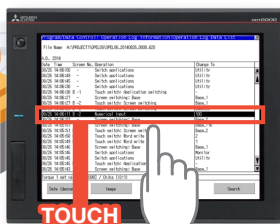
From now on, please log in with your employee ID before starting any operations.

OK!



Operation details are clear, even in the event of product defects

A product defect occurred. The cause is...this!



Ah! The defect was due to this value change. I need to ask Chiba-san about the situation.



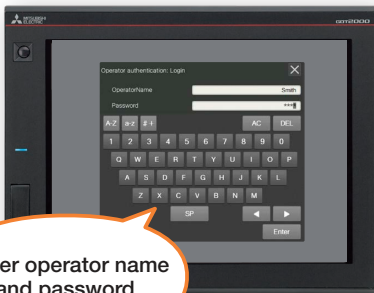
Date/Time	:08/26/2014 14:08:11
Function	:NML_VAL
Numerical Input	
Screen No	:Base_2
Operation	:
Torque 1 set value	
Operator	:Chiba (ID:1)
User ID	:-
Action No	:1
Data Type	:BIN16

The cause is quickly identified!



Operator Authentication Function

Realizing Operator's Login Management



To the operation screen after login

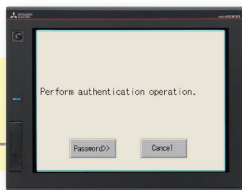


Enter operator name and password.

- ✓ **Connectable with external authentication devices such as RFID**



Employee ID can be used as is!



Using password input in conjunction is also possible.

- ✓ **Detailed operation and viewing settings per operator are possible**

Operation ✓

Viewing ✓



Operator A

Operation ✗

Viewing ✓



Operator B

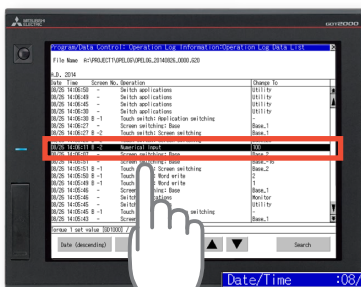
I'm at ease knowing that unintended operations are prevented.



Operation Log Function

No Need for a PC! Check Operation Logs on GOT

Operation log list



Touch the row of the operation log you want to check.

Detailed information

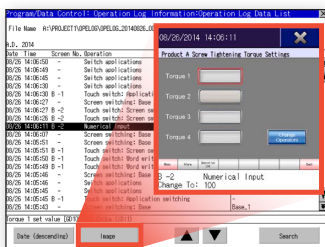
You can see "Who did what when"!*

Date/Time	:08/26/2014 14:06:11
Function	:NUM_VAL
Numerical Input	
Screen No	:Base_2
Operation	:
Torque 1 set value	
Operator	:Chiba (ID:1)
User ID	:-
Action No	:1
Data Type	:BIN16
Device	:GD1000
Change To	:100
Change To(Op.)	:100
Chng From	:10
Chng From(Disp)	:10

*For the "Who" information, it is required to use the operator authentication function in conjunction.



Picture a more detailed situation!



Check the operation log details by comparing with the operation screen.

The familiar screen makes picturing the situation easier.



Support for operation log export

The operation log can be converted to a CSV file or Unicode® text file and checked on PC via SD memory card or USB memory stick.

It helps me with creating reports.

For detailed information on each function and configuration, click the buttons below.

Details on the Functions and
How to Configure GT Designer3

CLICK

How to Operate on GOT

CLICK

*Different GOT models are compatible with each function being introduced.
For details, please refer to the manual from the "Details on the Functions and How to Configure GT Designer3" above.

Unicode and the Unicode logo are registered trademarks or trademarks of Unicode, Inc. in various countries.

