

GOT SIMPLE function list

Screen design

Figure/object functions

Figure
Logo text
Touch switch
Lamp
Numerical display, Numerical input
Text display, Text input
Date display, Time display
Comment display
Parts display
Parts movement
Historical data list display
Simple alarm display
Alarm display (user)
Level
Panelmeter
Line graph
Trend graph
Bar graph
Statistic bar graph
Statistic pie graph
Scatter graph
Historical trend graph

Functions performed on background of GOT
Logging
Recipe
Device data transfer
Trigger action
Time action
Hard copy
(File output/Serial printer output)
Project/screen script

Functions used with peripheral devices
Barcode function
RFID function
Report function (Serial printer output)

GOT functions

Base screen
Overlap window
Superimpose window
Dialog window
Key window
Language switching
System information
Security
Startup logo
FA transparent
Multi-channel function
Station No. switching
Backup/Restore

Coming soon

Debug functions

Device monitor
MELSEC-FX list editor

Inverter Operation Monitor

Parameter Setting 1

Interaction with various industrial devices

Mitsubishi industrial devices interaction solutions
In addition to various built-in functions, direct connection between Mitsubishi industrial devices will improve productivity and reduce costs.

Control

MELSEC Q series

MELSEC L series

MELSEC-F

The MELSEC Series has been designed based on a passion for monozukuri (creation), trustworthy technology and reliability. This concept also applies to system installation and operation.

With various I/O functions as standard inclusions, the MELSEC Series serves to improve work efficiency by realizing convenience, ease-of-use, and diverse control.

Positioning

Mitsubishi Servo Amplifiers & Motors

MELSERVO

Mitsubishi Servo System - advanced and flexible. Mitsubishi servo has a variety kind of motors (rotary, linear and direct drive motors) in order to achieve the best machine performance.

J4

JE

Drive

A diverse product range helps you make the right product choice. An inverter can be used to easily change rotating speed of three-phase induction motor. Environmentally friendly, high-performance inverters also support global standards. You can choose the best one from a variety of line-up in accordance with the application.

FREQROL A800

FREQROL D700

Mitsubishi Electric Graphic Operation Terminal

Power supply specifications

Item	Specifications	
	GS2110-WTBD	GS2107-WTBD
Power supply voltage	24VDC (+10%, -15%), ripple voltage 200mV or less	
Power consumption	7.6W (317mA/24V) or less	6.5W (271mA/24V) or less
With backlight off	3.8W (158mA/24V) or less	3.8W (158mA/24V) or less
Inrush current	17A or less (6ms, 25°C, maximum load)	
Allowable momentary power failure time	Within 5ms	
Noise immunity	Conforms to IEC61000-4-4, 2kV (power supply line)	
Withstand voltage	350VAC for 1 minute between power supply and ground	
Insulation resistance	10MΩ or higher with an insulation resistance tester (500VDC between power supply terminal and ground)	

Performance specifications

Item	Specifications	
	GS2110-WTBD	GS2107-WTBD
Display section	Display device	TFT color LCD
	Screen size	10"
	Resolution	800 × 480 [dots]
	Display size	222(8.74)(W) × 132.5(5.22)(H) [mm](inch) (Horizontal format)
	Number of characters	16-dot standard font: 50 chars. × 30 lines (2-byte) (Horizontal format)
	Display color	65536 colors
Backlight	LED (not replaceable) Backlight off/screen saving time can be set.	
	Type	Analog resistive film
Touch panel	Key size	Minimum 2 × 2 dots (per key)
	Simultaneous press	Simultaneous press prohibited (only 1 point can be pressed)
	Life	1 million times (operating force 0.98N or less)
Memory	C drive	Flash memory (internal) (9MB), for storing project data, OS Life (No. of writings) 100,000 times
	RS-422	RS-422, 1ch Transmission speed: 115200/57600/38400/19200/9600/4800bps Connector shape: D-Sub 9pin (female) Application: For communication with controllers and a barcode reader Terminating resistor: 330 Ω fixed
Built-in interface	RS-232	RS-232, 1ch Transmission speed: 115200/57600/38400/19200/9600/4800bps Connector shape: D-Sub 9pin (male) Application: For communication with controllers and a barcode reader For connecting a personal computer (Project data read/write, FA transparent function)
	Ethernet	Data transfer method: 100BASE-TX, 10BASE-T, 1ch Connector shape: RJ-45 (modular jack) Application: For communication with controllers For connecting a personal computer (Project data read/write, FA transparent function)
	USB	USB (Full Speed 12Mbps), 1ch Connector shape: Mini-B Application: For connecting a personal computer (Project data read/write, FA transparent function)
	SD card	SD compliant, 1ch Supported memory card: SDHC memory card, SD memory card Application: Project data read/write, logging data save
	Buzzer output	Single tone (LONG/SHORT/OFF adjustable) IP65F (Only the front part of the panel)
Protective structure	IP65F (Only the front part of the panel)	
External dimensions	272(10.7)(W) × 214(8.43)(H) × 50(1.97)(D) [mm](inch)	206(8.11)(W) × 155(6.11)(H) × 50(1.97)(D) [mm](inch)
	Approx. 1.3kg (excl. mounting brackets)	Approx. 0.9kg (excl. mounting brackets)
Weight	Approx. 1.3kg (excl. mounting brackets)	
Compatible software package	Version 1.105K or later* (English Version)	
*Installation of GS installer is required.		

GS installer installation procedure

1. Double click the GS Installer (GS Installer.exe) in the folder of GT Works3 Ver. 1.105K or later. Operate the personal computer in accordance with instructions given on the screen.

2. When the completion screen appears, click the [Finish] button to finish installing the GS Installer.

GS Installer - InstallShield Wizard

InstallShield Wizard Complete

For more details, please refer to the included manual.

External dimensions

GS2110-WTBD

GS2107-WTBD

Panel thickness: 1.6mm to 4mm

Panel thickness: 1.6mm to 4mm

Open an installation hole on the control panel with the dimensions as shown below. For the mounting brackets, space of 10mm is required above the top and below the bottom of the hole.

•Horizontal format (Rotate the image 90 degree for vertical format)

Thickness: 1.6mm to 4mm

Model	A	B
GS2110-WTBD	258	200
GS2107-WTBD	191	137

The actual display may differ from what are shown on GOT screen images in this catalog.

For safe use

To use the products given in this document properly, always read the related manuals before starting to use them.

Please note that repair service of this product is different from other products.

Trademarks and registered trademarks

ETHERNET is a registered trademark of Xerox Corp.

SD and SDHC Logos are registered trademarks or trademarks of SD-3C, LLC.

Other product and company names are either trademarks or registered trademarks of their respective owners.

Country/Region Sales office

USA+1-847-478-2100

Brazil+55-11-4689-3000

Mexico+52-55-9171-7600

Germany+49-2102-486-0

UK+44-1707-28-8780

Italy+39-039-60531

Spain+34-935-65-3131

France+33-1-55-68-55-68

Czech Republic+420-251-551-470

Turkey+90-216-526-3990

Poland+48-12-630-47-00

Russia+7-812-633-3497

South Africa+27-11-658-8100

China+86-21-2322-3030

Taiwan+886-2-2299-2499

Korea+82-2-3660-9530

Singapore+65-6473-2308

Thailand+66-2682-6522 to 31

Indonesia+62-21-3192-6461

Vietnam+84-8-3910-5945

India+91-20-2710-2000

Australia+61-2-9684-7777

MITSUBISHI ELECTRIC CORPORATION

HEAD OFFICE: TOKYO BUILDING, 2-7-3, MARUNOUCHI, CHIYODA-KU, TOKYO 100-8310, JAPAN
NAGOYA WORKS: 1-14, YADA-MINAMI 5, HIGASHI-KU, NAGOYA, JAPAN

MITSUBISHI ELECTRIC

Changes for the Better

for a greener tomorrow

ecoChanges

Graphic Operation Terminal
GOT SIMPLE

New Product Release

GOT SIMPLE

Graphic Operation Terminal

Inverter Operation Monitor

Operation Monitor

Graph

Parameter 1

Parameter 2

Alarm

Standard interfaces

RS-422
RS-232
Ethernet
SD card slot

7 inch WVGA 800×480 dots
GS2107-WTBD

10 inch WVGA 800×480 dots
GS2110-WTBD

GOT SIMPLE Debut

Simple, high functioning, and user friendly model for a reliable system.



10 inch GS2110-WTBD
WVGA 800×480 dots

7 inch GS2107-WTBD
WVGA 800×480 dots



Major functions

Resolution WVGA 800×480 dots	User memory 9MB	TFT 65536 colors
Built-in RS-422, RS-232 ports	Built-in Ethernet port	Built-in USB device port
Built-in SD card slot	IP65F Protective structure	Vertical display

SD card slot

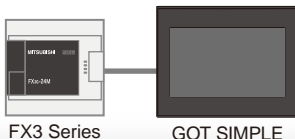
SDHC compliant
for large volume
data



Logging function

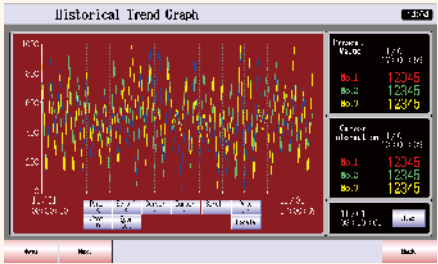
GOT SIMPLE collects the data from multiple devices!

GOT SIMPLE manages the data of all connected industrial devices. The data can be collected at an arbitrary timing and can be used for data analysis and feedback.



Historical trend graph

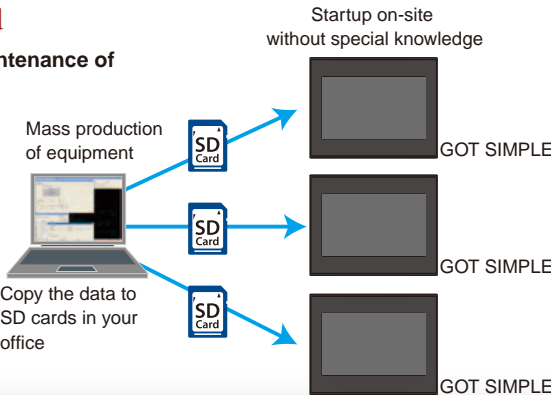
- The data collected by the logging function can be displayed in a graph.
- The data can be checked easily by scrolling or specifying time.



Start from memory card

Useful for replacement or maintenance of GOT SIMPLE

Transfer the screen data and all the necessary system data to make a GOT SIMPLE operate to a memory card in advance. By just inserting the memory card, the GOT SIMPLE can be started quickly.



USB device

Compact Mini-B
connector



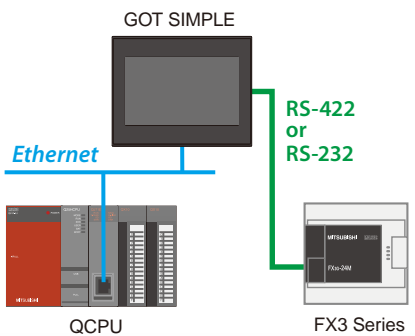
GOT SIMPLE screens can be designed with
GT Works3 Ver.1.105K or later.

GOT Screen Design Software MELSOFT GT Works3+plus

Multi-channel function

Use GOT SIMPLE to control industrial devices!

Up to 2 industrial devices can be controlled with one GOT SIMPLE. The data can be easily transferred between devices with just simple settings in GT Works3.

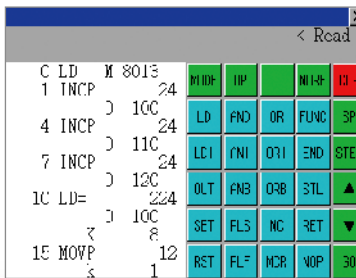


MELSEC-FX list editor

Convenient for minor onsite program changes

GOT SIMPLE allows minor program changes onsite. MELSEC-FX series PLC sequence programs can be edited in list format.

MELSEC-FX programs can be edited only by using a GOT SIMPLE

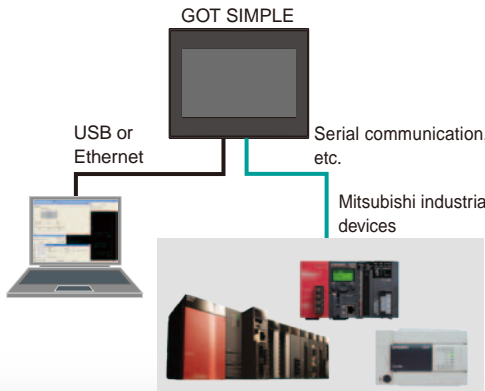


MELSEC-FX list editor screen

FA transparent function

Sequence programs and parameters can easily be modified at the worksite

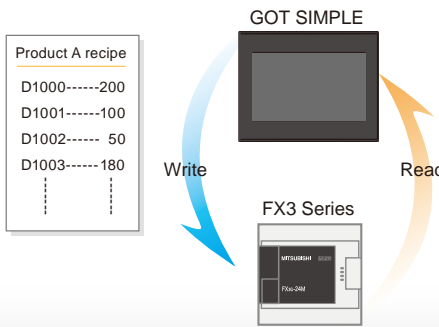
The GOT SIMPLE acts as a transparent gateway to enable programming, start up, and adjustment of Mitsubishi industrial devices. Users do not have to bother with changing cable connections.



Recipe function

Convenient for frequent changeover

Recipe information such as material blend and machine conditions are saved in the GOT SIMPLE. This information can be written from the GOT SIMPLE to programmable controllers. Adjusted data can also be read and stored in the GOT SIMPLE.



GOT SIMPLE can be installed vertically.

Easily installed on compact equipment!

By using a GOT SIMPLE vertically, it can be easily installed on compact equipment and can neatly display vertical letters.



Operator authentication function

Enhanced security control using password control

Setting the level (authority) of operation and display for each operator can strengthen security and prevent operation errors.

Operator name

Password