

**GRAPHIC OPERATION TERMINAL  
GT1455/GT1450**

for a greener tomorrow



More than plain Visualization

# GT14


**GT1450-QLBDE**

64K color TFT display


**GT1455-QLBDE**

16 grey scales STN display

Screen size 5.7 inches	Resolution 320W x 240H dots	Memory 9MB built-in flash memory	Com. ports RS-422/485, RS-232 Ethernet	Function Backup/restoration function	Function Logging function
Function Multi-channel function	Function FA transparent function	Function USB ports host and device	Function Extended alarm monitoring/display	Function Advanced recipe function	Function SD card support

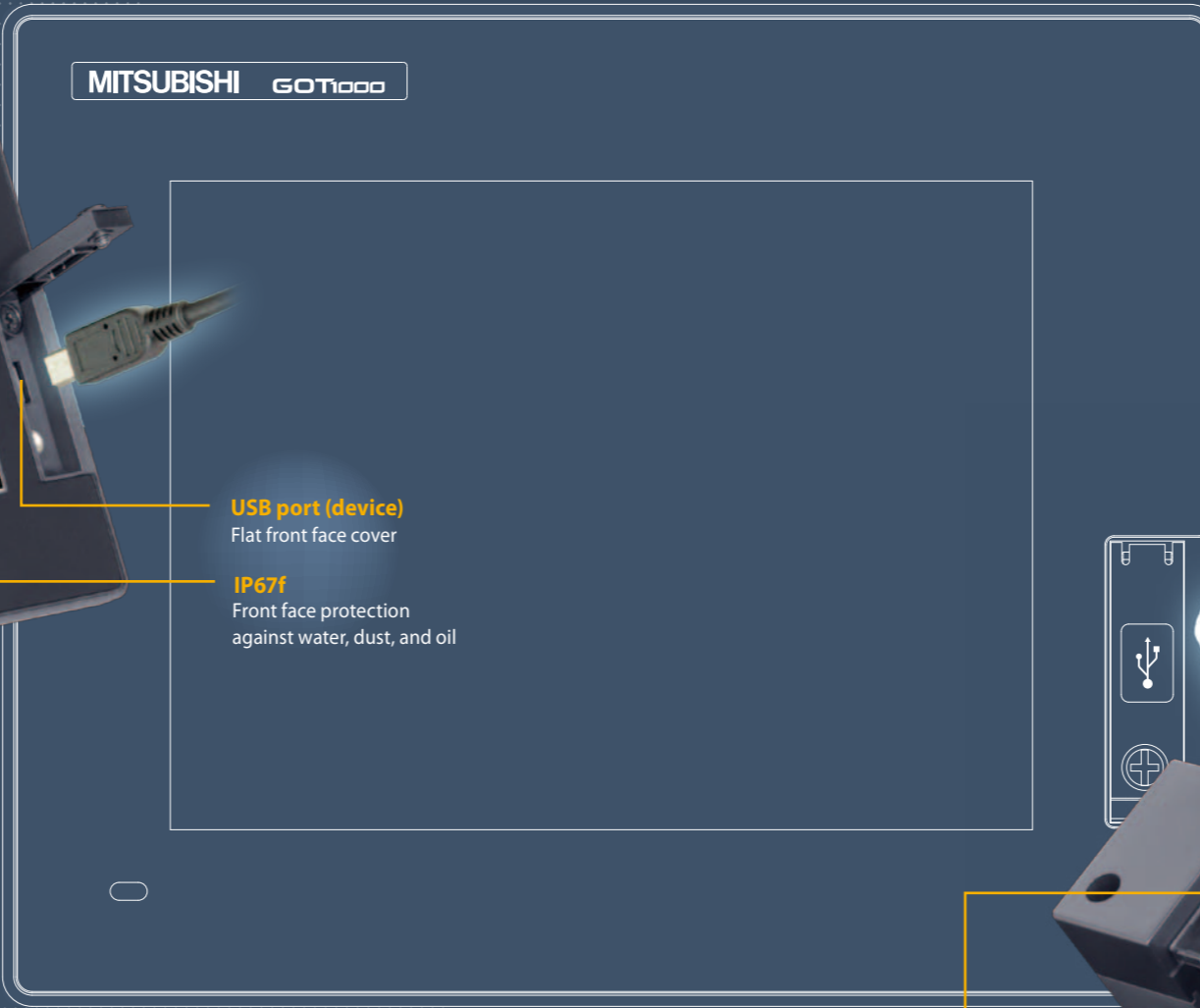
Mitsubishi Electric Corporation Himeji Works is a factory certified for ISO14001 (standards for environmental management systems) and ISO9001(standards for quality assurance management systems)



## Empowering Industries



- Vivid color**  
TFT 65,536 colors  
STN 16 gray scales
- LED backlight**  
Maintenance-free
- Analog touch panel**  
Component placement can be freely

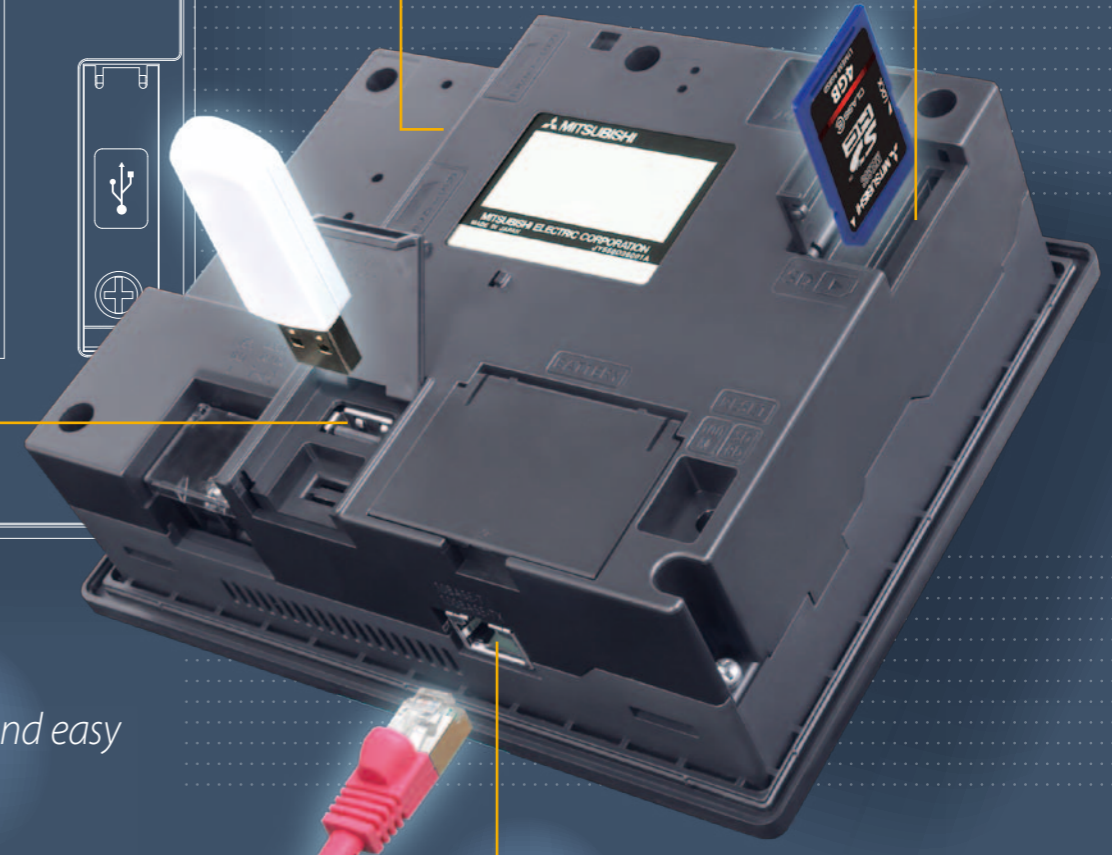


- USB port (device)**  
Flat front face cover
- IP67f**  
Front face protection against water, dust, and oil

5.7-inch Actual Size

- RS-422/485 port**
- RS-232 port**
- Devices can be connected easily with three serial

*SDHC support*  
**SD card slot**



- USB port (host)**  
*Simple and easy*

**Ethernet port** *Network power*

## Mitsubishi Graphic Operation Terminal - 5.7 Inch Lineup

Functionality

**GT10**  
5.7in / QVGA

16 grey scale monochrome    256 color STN

**GT14**  
5.7in / QVGA

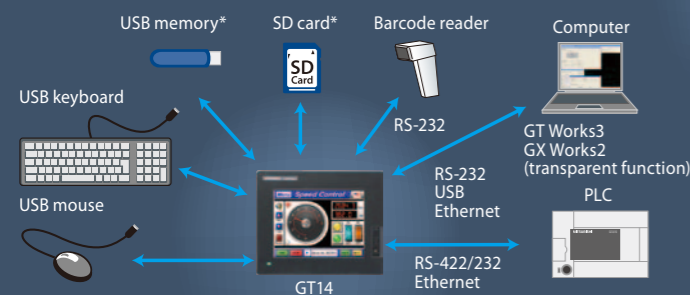
16 grey scale monochrome    65,536 color TFT

**GT16**  
5.7in / VGA

65,536 color TFT

Resolution/Color

### Connect to all different kinds of FA equipment

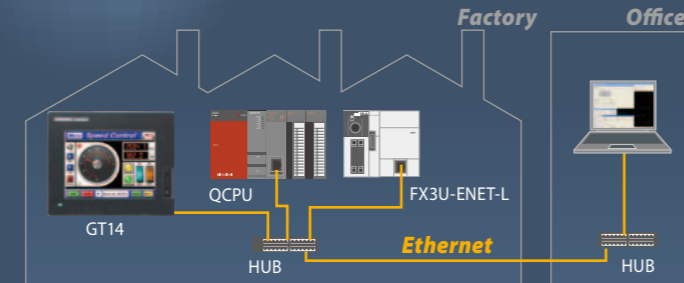


\*: Save base OS, project data, alarm history, recipe, logging, backup data

### Ethernet

Multi-channel - Utilize two communication channels Control two channels.

Choose to use any two connections from Ethernet, RS-422/485, and RS-232.

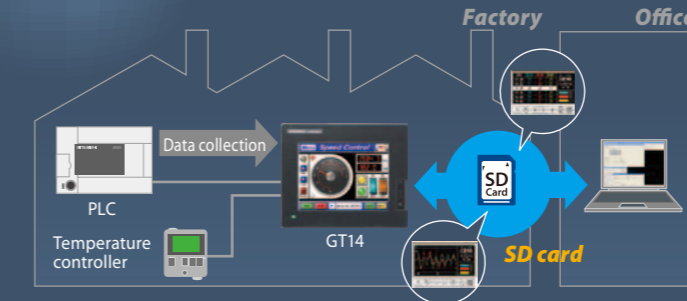


### External memory increases the possibilities!

#### SD card

**Logging** - Collect data from connected devices

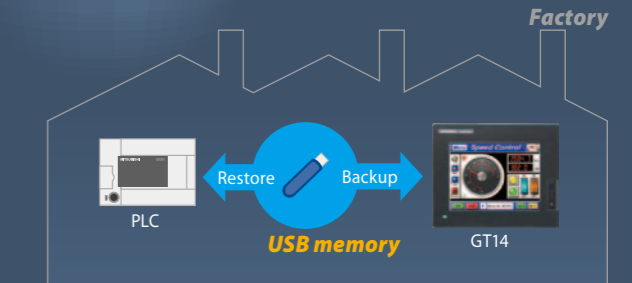
Collect data from connected FA devices, including useful data analysis and feedback, and take the data back to the office.



#### USB memory

**Backup/restore** - For ease of use and peace of mind

Back up PLC program and parameters to external memory via GOT14\*. Restore the backup for immediate recovery.

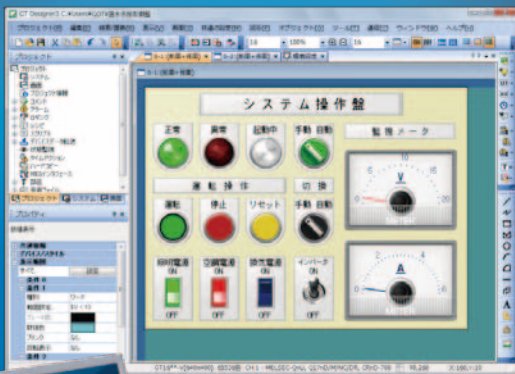


\*: Otherwise require a USB

## Performance specification

Item	Specifications	
	GT1455-QTBDE	GT1450-QLBDE
Power	Input supply	24VDC (+10%, -15%)
	Consumption	Less than 8.40W
Display	Type	TFT LCD      Monochrome LCD
	Size	W115(4.53) x H86 (3.39) [mm] (inch)
	Touch panel	Analog resistive film
	Backlight	70,000h or longer
Memory	9Mbytes built-in flash memory	
Built-in interface	RS-422/485	D-Sub 9pin (Female)
	RS-232	D-Sub 9pin (Male)
	Ethernet	100BASE-TX, 10BASE-T,
	USB	TYPE-A USB (Full Speed 12Mbps), host Mini-B USB (Full Speed 12Mbps), device
	SD card	Supports: SDHC memory card, SD memory card
Environment	Operating temperature	0 – 50°C
	Storage temperature	-20 – 60°C
	Ratings	IP67f (front panel only)
External dimensions	W164(6.46) x H135(5.32) x D55(2.17)[mm](inch)	
Weight	0.7kg	
Programming	GT Designer3 version 1.37P or later	

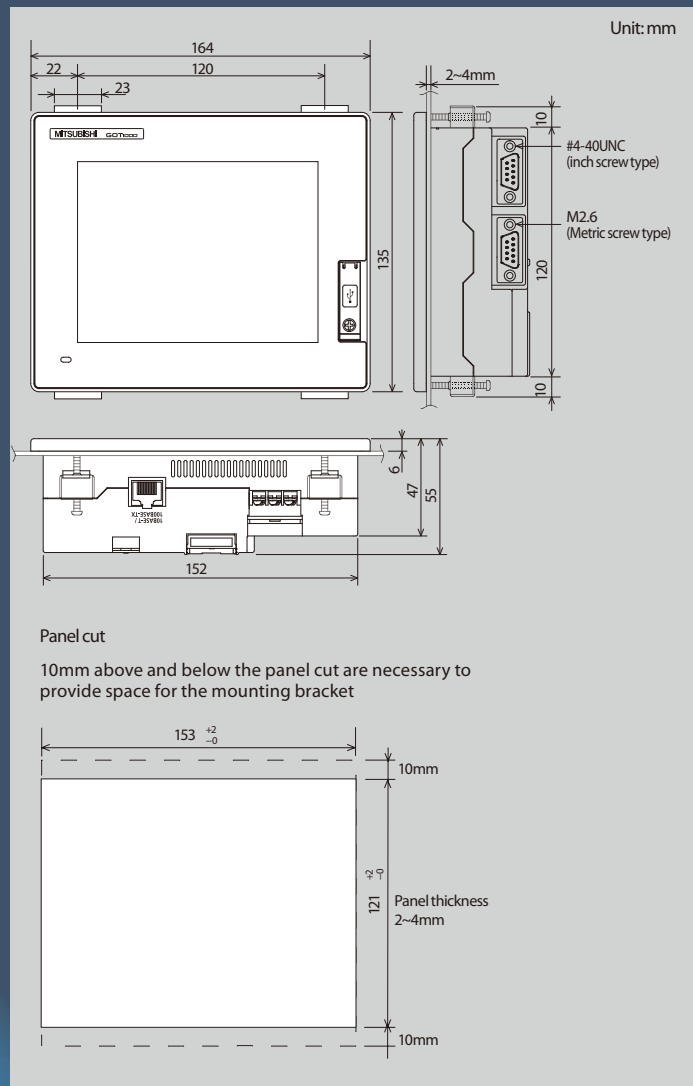
# One screen design program to fit all your GOT1000 needs



## MELSOFT GT Designer3

Compatible with  
**Windows® 7**

## External Dimensions

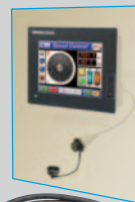


## Connection Options

Panel-mounted USB port extension

**GT14-C10EXUSB-4S**

Bring the host USB port to the front



RS-232/485 conversion adaptor

**GT14-RS2T4-9P**

Convert the RS-232 port to RS-485



# MITSUBISHI ELECTRIC CORPORATION

HEAD OFFICE: TOKYO BUILDING, 2-7-3 MARUNOUCHI, CHIYODA-KU, TOKYO 100-8310, JAPAN  
NAGOYA WORKS: 1-14, YADA-MINAMI 5, HIGASHI-KU, NAGOYA, JAPAN

Specifications subject to change without notice.  
Printed in Japan on recycled paper.