

Programmable Controller MELSEC-L Series Quick Start Guide

Let's Start, L Series!



Little on size, large on performance

The new L series has a small footprint and is loaded with features.



How to read this guide **1**

Introduction **2**

Operations that can be performed using MELSEC-L series **3**

Related manuals **4**

Using programmable controllers **5**

Preparing for Operation **1**

System Configuration **2**

Mounting Modules **3**

Wiring Modules **4**

Checking Power Supply **5**

Programming **6**










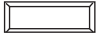



Writing Programs **7**

Checking Operation **8**

Frequently-used functions **6**

How to read this guide

The following shows the symbols used in this Quick start guide with descriptions and examples.

Symbol	Description	Example
 Point	This symbol explains information you need to know.	Select [View] → [Comment] ( key +  key). The comment display/hide setting can be switched.
 Reference	This symbol describes the references of manuals and pages for more details.	For details, refer to the following manual.  MELSEC-L CPU Module User's Manual (Function Explanation, Program Fundamentals) : SH-080889ENG
 Terminology	This symbol describes the explanations of the terminology.	Device : A place where ON/OFF or numeric values and character string data is recorded in the programmable controller.
 Caution	This symbol describes content that must be noted in operation.	When mounting the module, the power must be turned off.
[]	Menu names on the menu bar ([] → [] shows drop-down menus.)	Select [Project] → [New project].
	Buttons on the screen	 button
	Keys on the keyboard	 key
()	Another procedure corresponding to a drop-down menu (icons and keys on the keyboard)	Select [View] → [Comment] ( key +  key).

Introduction

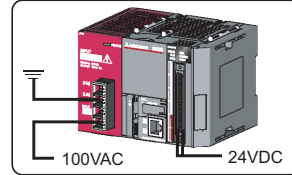
This Quick start guide explains the basic procedures for the first-time use of the Mitsubishi programmable controller MELSEC-L series CPU module (CPU module).

You can easily understand how to use the programmable controller with this guide.

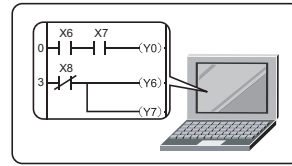
Quick start guide



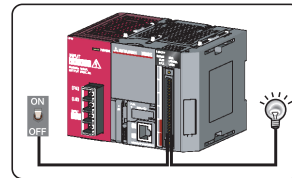
Mounting and wiring modules



Creating programs



Checking operations



Reference

● Precautions

Read "SAFETY PRECAUTIONS" in the MELSEC-L CPU Module User's Manual or "Safety Guidelines" that is an included manual of CPU module carefully.

⚠ Caution

This Quick start guide explains operations in the programmable controller system described in "[2] System Configuration" (P.9).

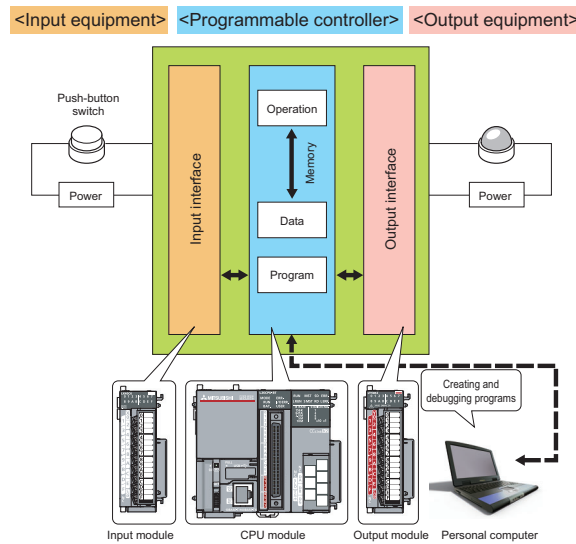
Read the manuals referred on the following page when you design or manage the system.

👉 "Related manuals" (P.6)

Operations that can be performed using MELSEC-L series

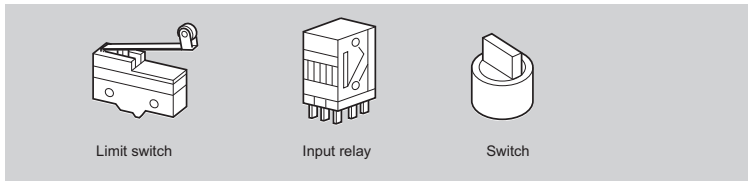
■ Programmable controllers

The programmable controllers perform sequence control and logical operations by switching the output of output equipment ON/OFF according to the command signal from the input equipment.

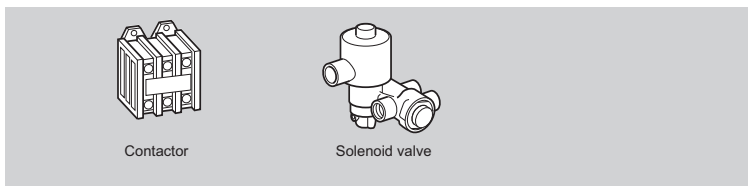


Other equipment is shown below.

<Examples of input equipment>



<Examples of output equipment>



💡 Terminology

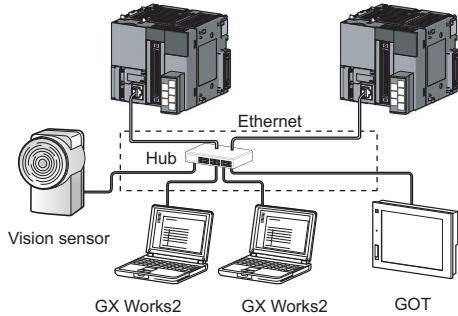
- Sequence control** : Consecutively processes each control step based on the fixed order or procedure.
- Logical operations** : One of the basic operation methods in programming. Logical operations consist of three basic operations: logical AND, logical OR, and logical NOT.
- Limit switch** : A switch to stop the movement of mobile objects on both sides of a moving apparatus for safety reasons.
- Relay** : Breaks/connects the electricity with electrical switching.
- Contactor** : Generally called an electromagnetic contactor to break circuits and switch the heater.
- Solenoid valve** : An electromagnet with a direct/alternating current. Connected to the output side of the programmable controller.

■ Features of CPU module

MELSEC-L series programmable controllers are all-in-one programmable controllers that have the following functions built into the CPU module. The use of these built-in functions enables you to design a smaller-scale system.

Built-in Ethernet function

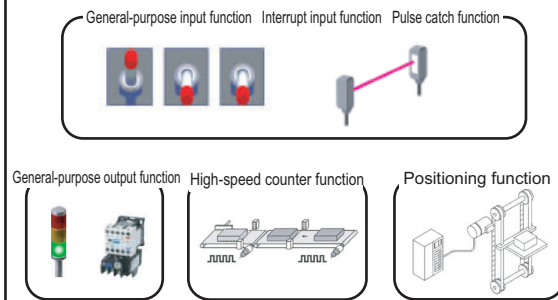
A maximum of 16 external devices can be connected via a hub.
The reading/writing of the device data of the CPU module and the sending/receiving of the data of the other connected devices can be performed to/from a personal computer and GOT.



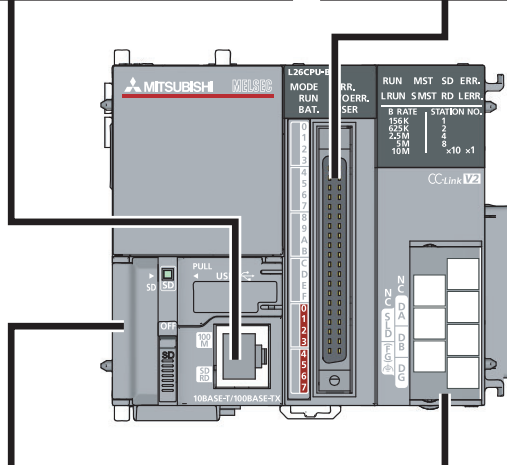
MELSEC-L CPU Module User's Manual
(Built-in Ethernet functions): SH-080891ENG

Built-in I/O function

Single function exclusive modules become unnecessary, and a smaller-scale system can be configured using only LCPU. Therefore, system cost reduction can be realized.



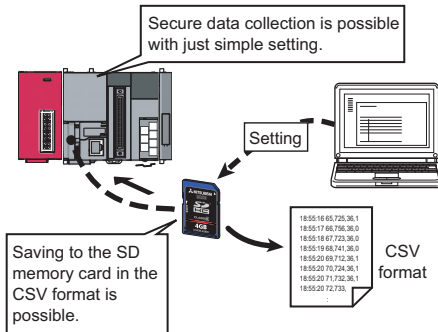
MELSEC-L CPU Module User's Manual
(Built-in I/O functions): SH-080892ENG



* The illustration represents L26CPU-BT.

Data logging function

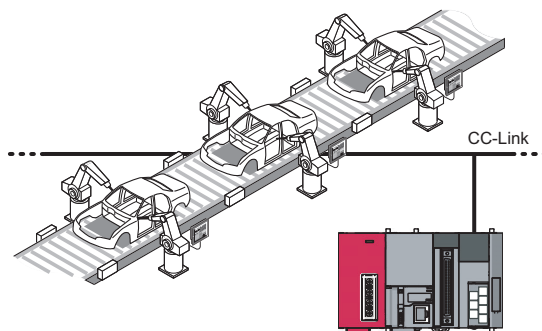
Logging can be performed under various conditions using the exclusive configuration tools. The collected data can be saved to the SD memory card in the CSV format.



MELSEC-L CPU Module User's Manual
(Data logging functions) : SH-080893ENG

Built-in CC-Link function

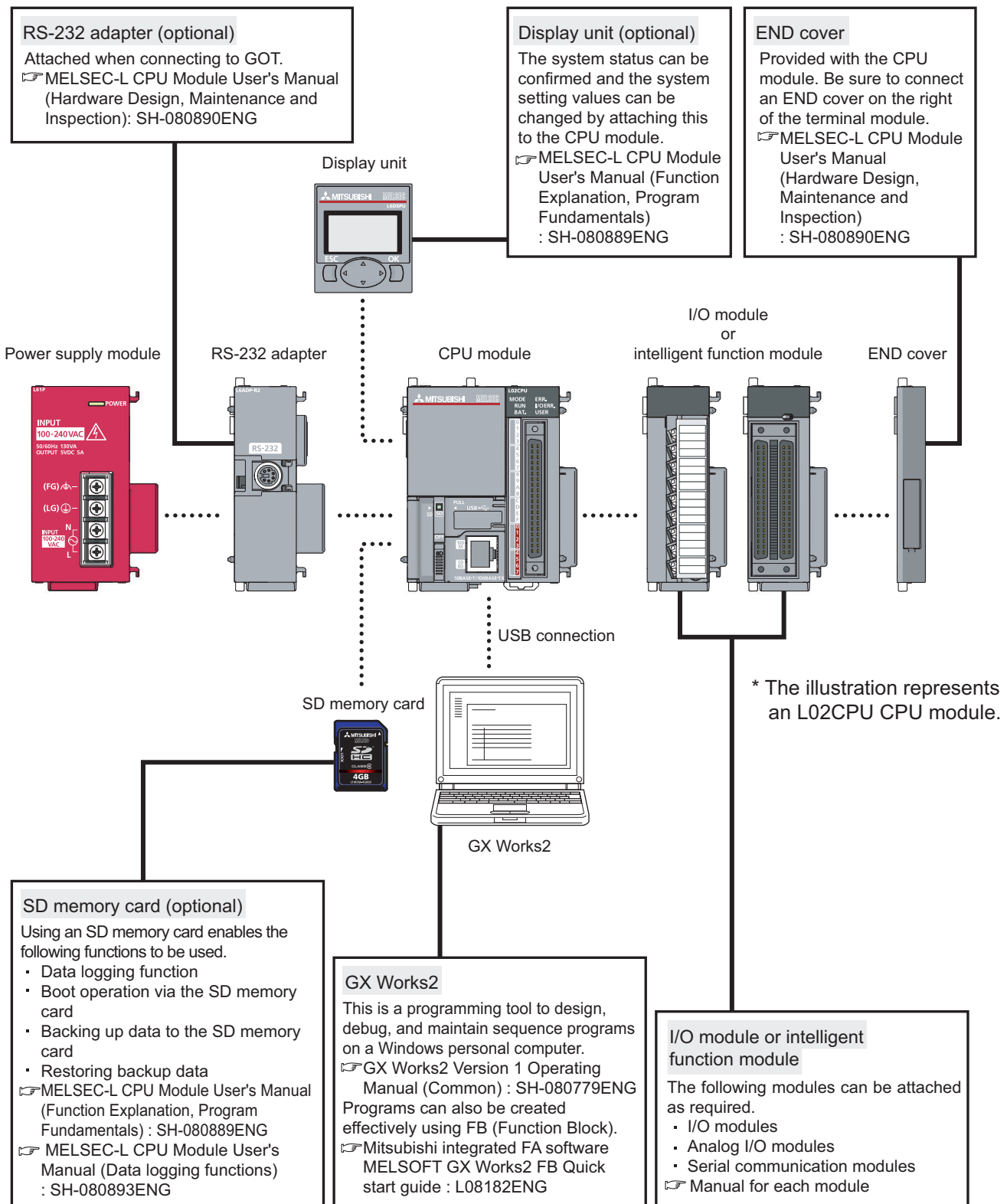
I/O modules, intelligent function modules, and special function modules, which are arranged separately, can be controlled with the CPU module. In addition, a simple separately-configured system can be designed by connecting multiple CPU modules using CC-Link.
*CC-Link function is only built into L26CPU-BT.



MELSEC-L CC-Link System Master/Local Module
User's Manual : SH-080895ENG

System enhancement according to application

By connecting various types of modules, the system can be enhanced according to the application. As a baseless structure is employed, the space of the control panel can be used effectively without being limited by the size of the base.



Related manuals

This Quick start guide explains the basic procedures for introducing programmable controllers.
Read the following manuals to use each module with a full understanding according to your purpose.

■ Learning about programmable controllers

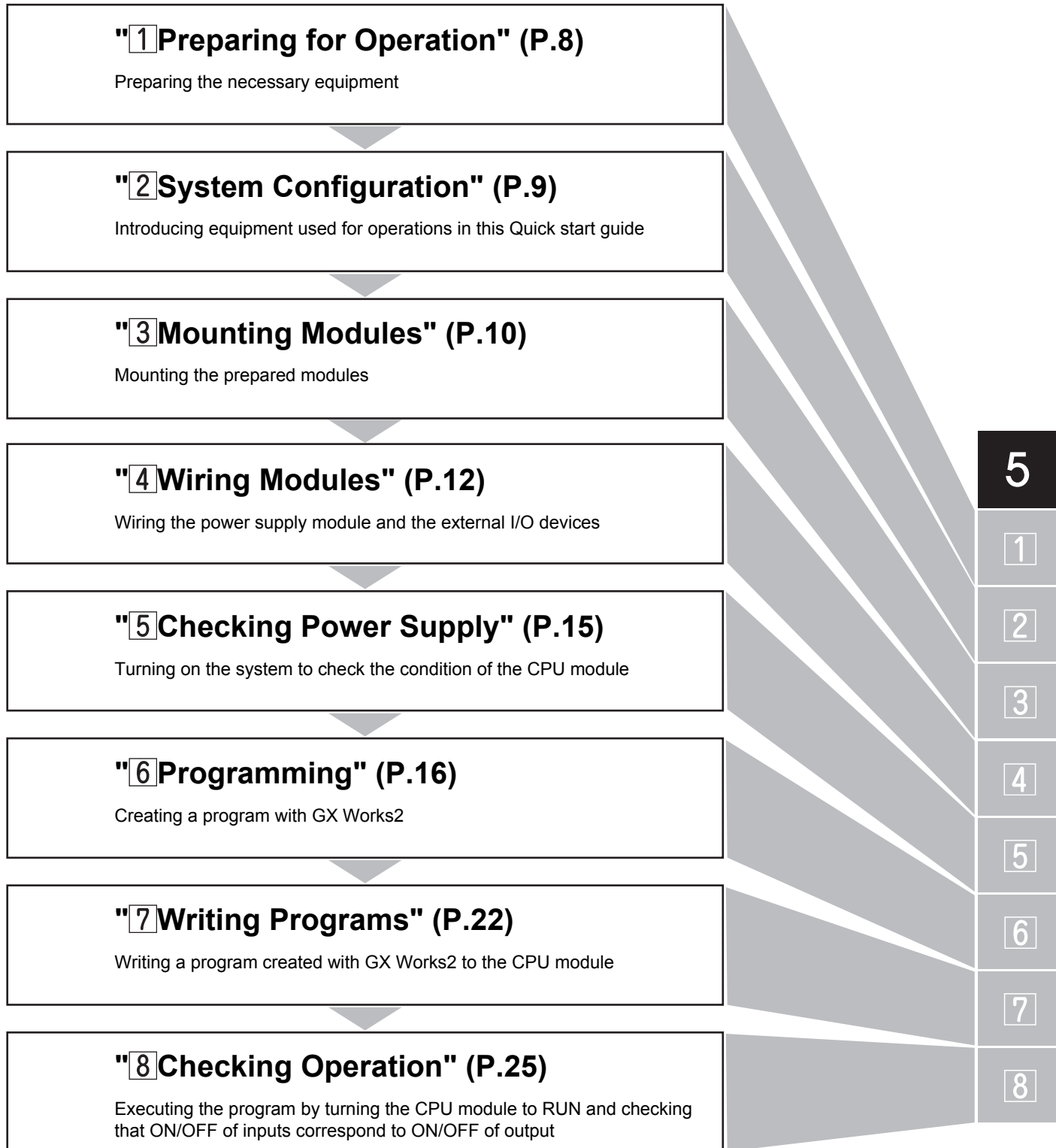
- MELSEC-L CPU Module User's Manual
(Hardware Design, Maintenance and Inspection) SH-080890ENG
This manual explains specifications, installation, and maintenance methods for the CPU module and the power supply module.
- MELSEC-L CPU Module User's Manual
(Function Explanation, Program Fundamentals) SH-080889ENG
This manual explains the functions of the CPU modules.
It also explains the operations of devices, parameters, and display unit that are the basic knowledge necessary for programming.

■ Learning about programming tools (software)

- GX Works2 Beginner's Manual (Simple Project) SH-080787ENG
This manual explains the basic operations for creating, editing, and monitoring programs on simple projects for operators who are using GX Works2 for the first time.
- GX Works2 Version 1 Operating Manual (Common) SH-080779ENG
This manual explains the common functions of both the simple and structured projects of GX Works2, including the operation methods for system configurations, parameter settings, and online functions.

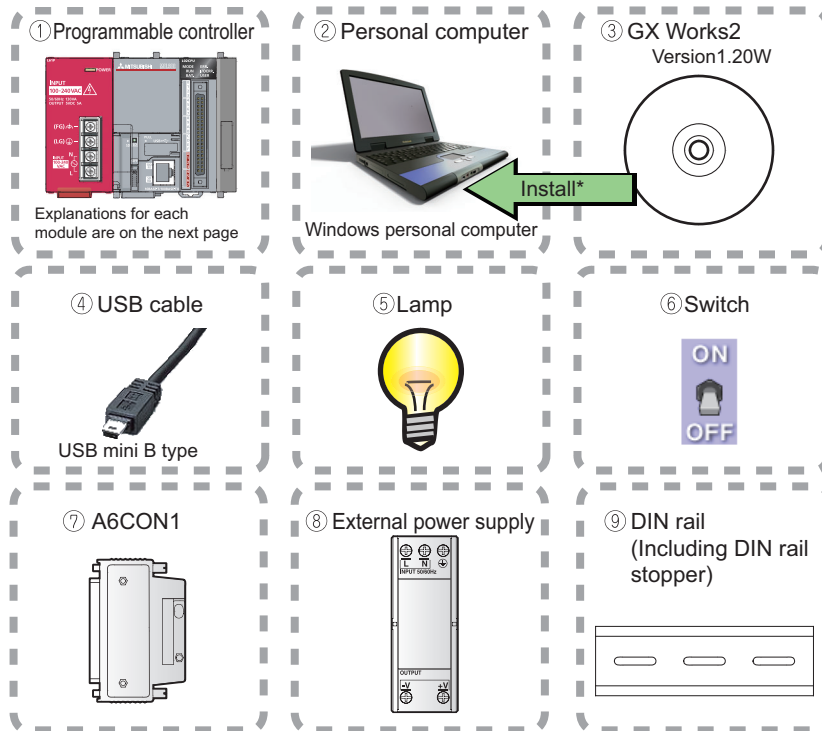
Using programmable controllers

The programmable controllers are installed with procedures as shown below.



1 Preparing for Operation

■ Preparing the necessary equipment



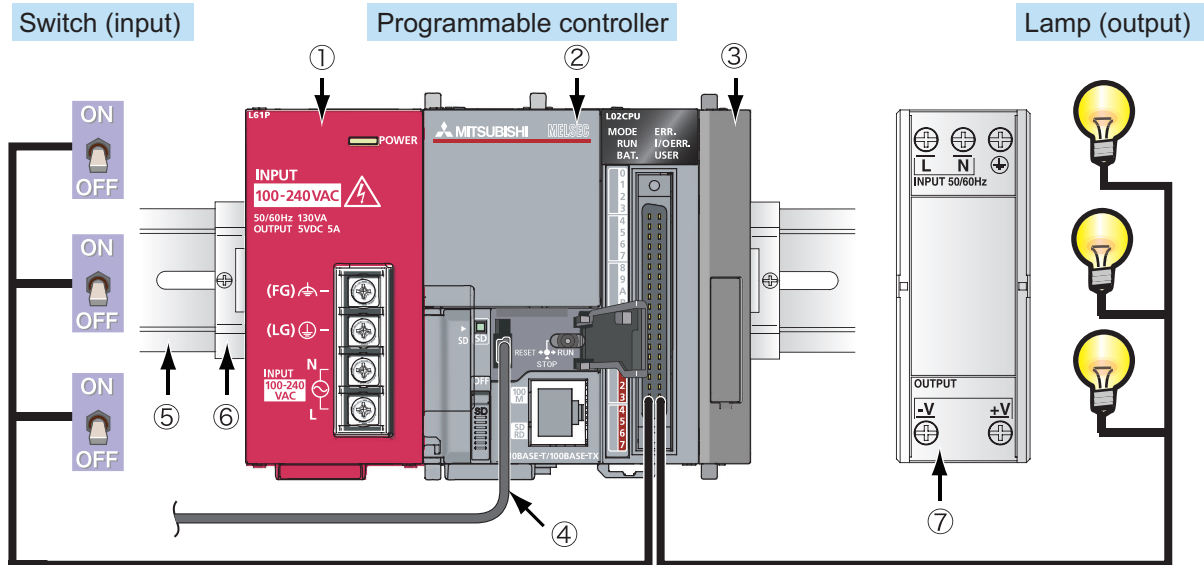
* GX Works2 Version 1 needs to be installed in your personal computer in advance.

2 System Configuration

System configuration example

This Quick start guide explains the following system configuration as an example.

Inputs and outputs are configured as switches and lamps respectively.



* Wires to the power supply module and the power of the external I/O devices are omitted.

No.	Name	Model	Description
①	Power supply module	L61P	Supplies power to modules such as CPU module.
②	CPU module	L02CPU	Integrates the control of the programmable controller.
③	END cover	L6EC	Supplied with the CPU module. Be sure to connect an END cover on the right of the terminal module.
④	Connection cable (USB cable)	MR-J3USBCBL3M (USB A type - USB mini B type)	Connects the personal computer with GX Works2 installed and the CPU module.
⑤	DIN rail	(IEC 60715) • TH35-7.5Fe • TH35-7.5Al • TH35-15Fe	The programmable controller system is secured by attaching it to the DIN rail.
⑥	DIN rail stopper	—	Use DIN rail stoppers that can be attached to the DIN rails.
⑦	External power supply	—	Supplies power to the external I/O devices. Use the CE marked models and be sure to perform grounding for the FG terminal.

3 Mounting Modules

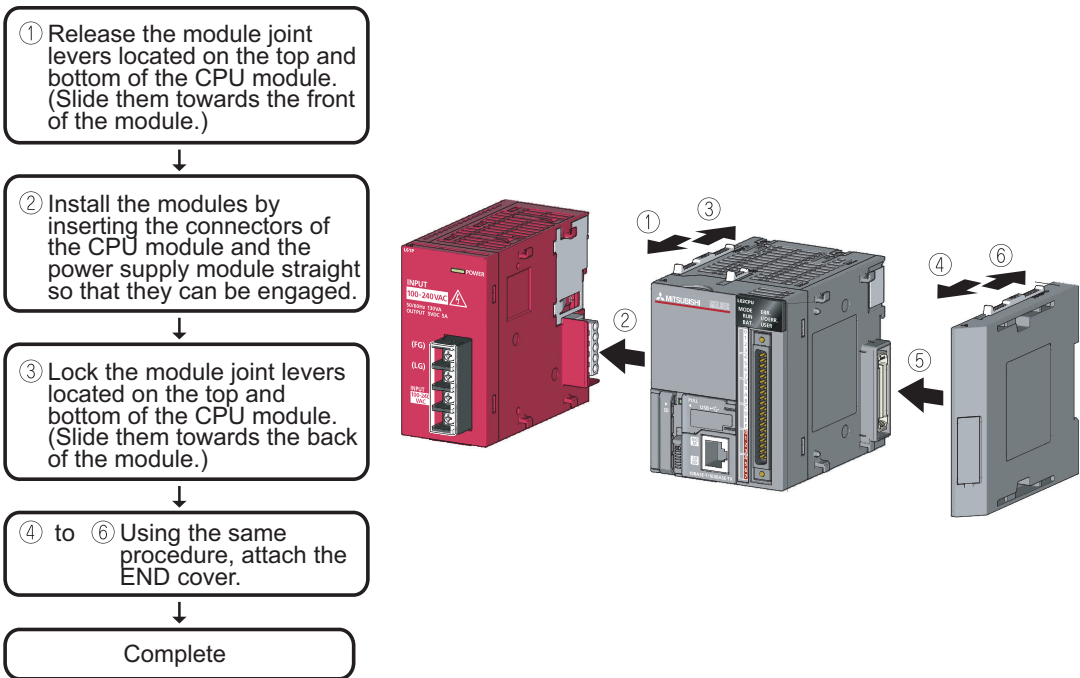
Mount the prepared modules.

A battery connector must be connected when using the CPU module for the first time.

⚠ Caution

The power supply must be disconnected when mounting modules.

■ Mounting modules

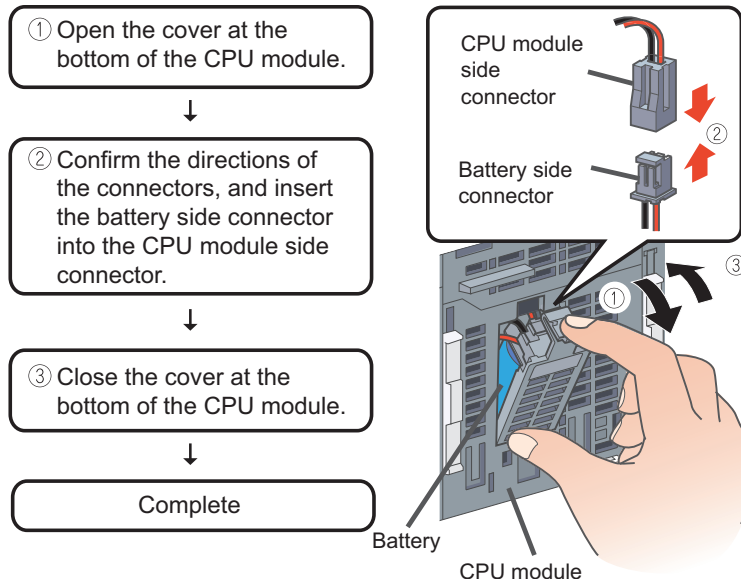


5

3

Point

● Connect a battery in the CPU module by the following procedure.



■ Mounting Modules to DIN Rail

① Pull down all the DIN rail hooks on the back of the modules. (Pull them down until they click.)



② Engage the claws at the top of the modules with the top of the DIN rail, and then insert the DIN rail to install.



③ Lock the DIN rail hooks of the modules to engage them with the DIN rail. (Push them up until they click. If your finger does not reach the DIN rail hook, use a screwdriver, etc.)



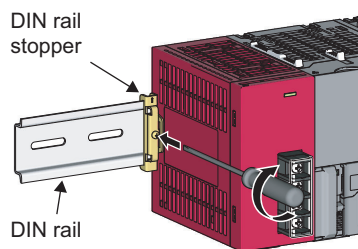
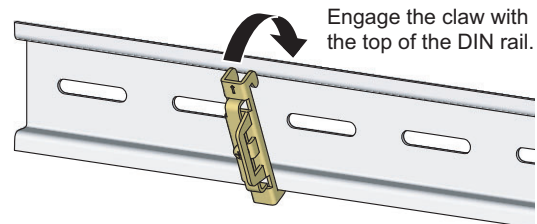
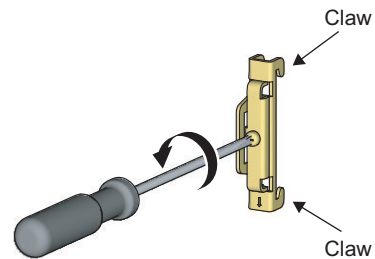
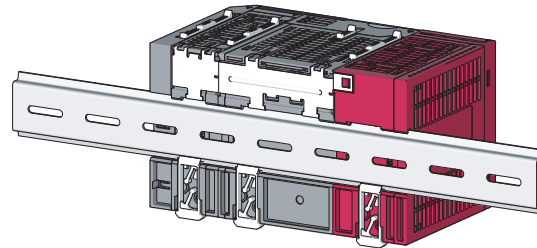
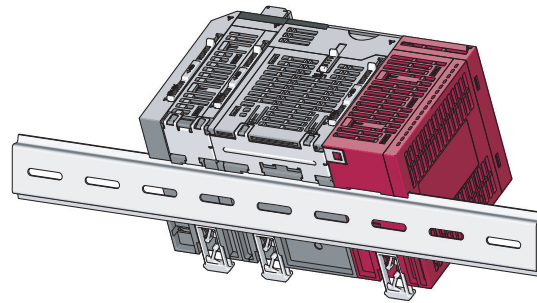
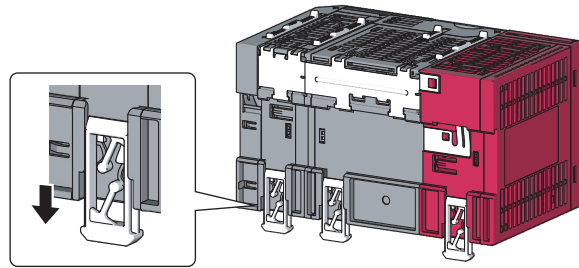
④ Loosen the screws of the DIN rail stoppers.



⑤ Engage the claw at the bottom of a DIN rail stopper with the bottom of the DIN rail, and then engage the claw at the top of the DIN rail stopper with the top of the DIN rail. (Engage the DIN rail stopper after confirming the arrow indication on the front surface of the DIN rail stopper.)



⑥ Slide the DIN rail stopper to the edge of the module and tighten the screw using a screwdriver. (Using the same procedure, attach a DIN rail stopper to other side of the module.)



4 Wiring Modules

Wire the power supply module and the external I/O devices.

⚠ Caution

The power supply must be disconnected when wiring modules.

📖 Reference

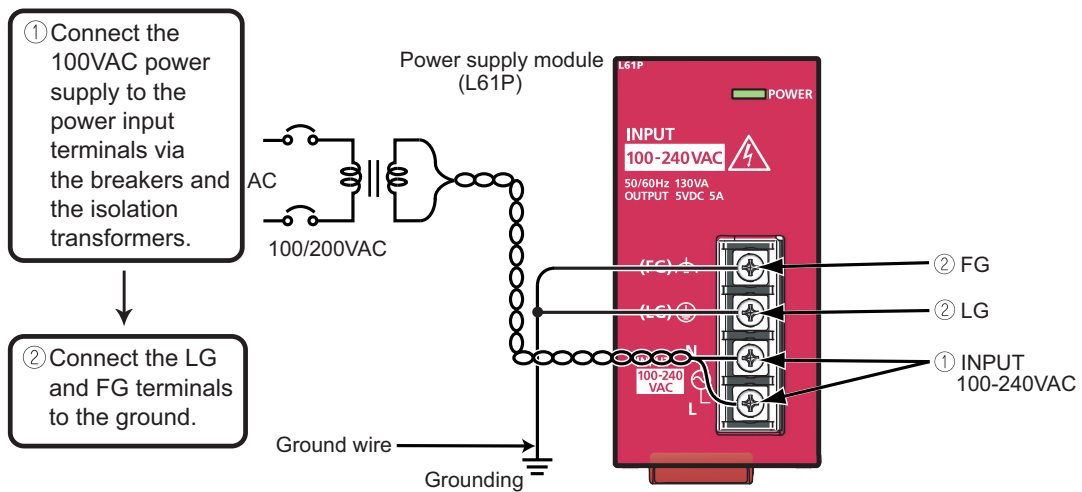
For details of wiring precautions, refer to the following manual.

👉 MELSEC-L CPU Module User's Manual (Hardware Design, Maintenance and Inspection)
: SH-080890ENG

■ Wiring the power supply module

The following shows an example of wiring the power line and the ground wire.

Grounding is performed to prevent electric shocks and malfunctions.

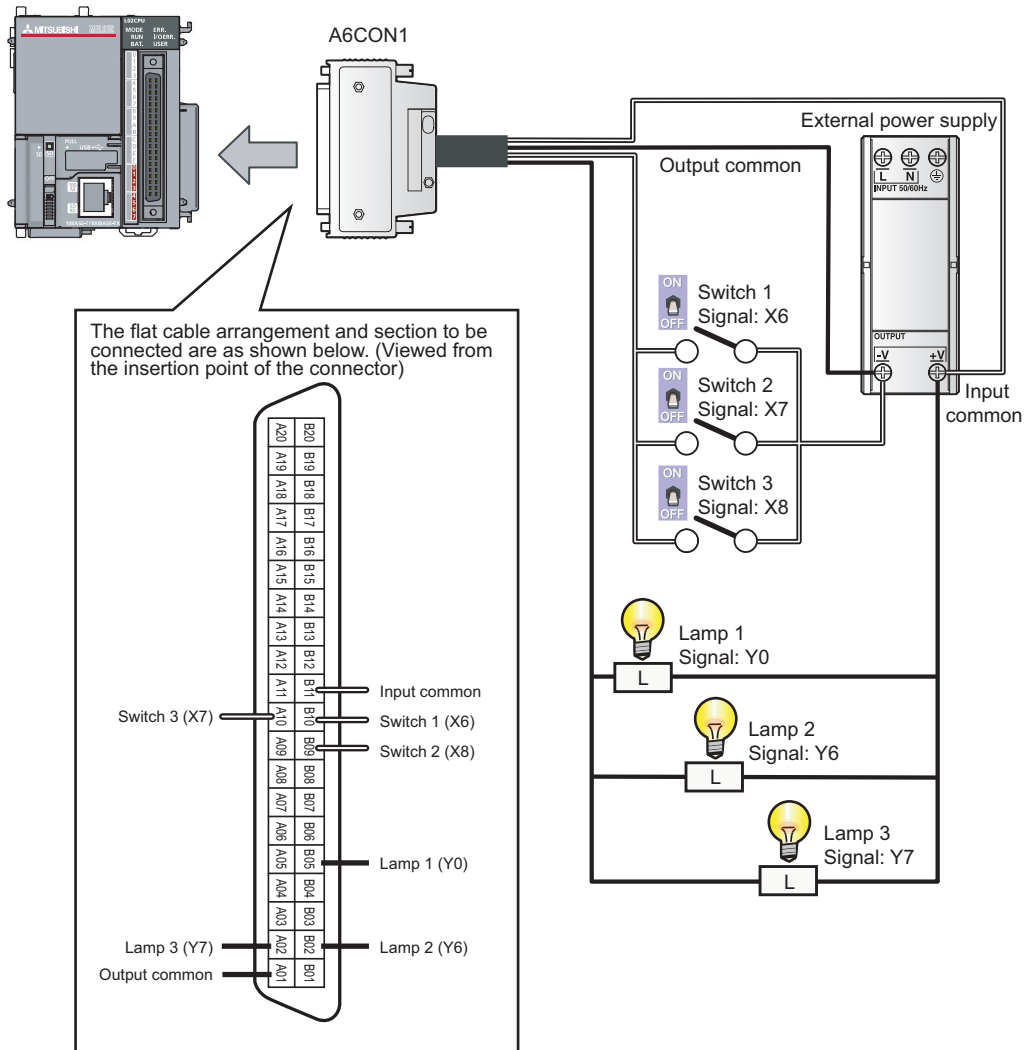


5

4

■ Wiring connector for external devices

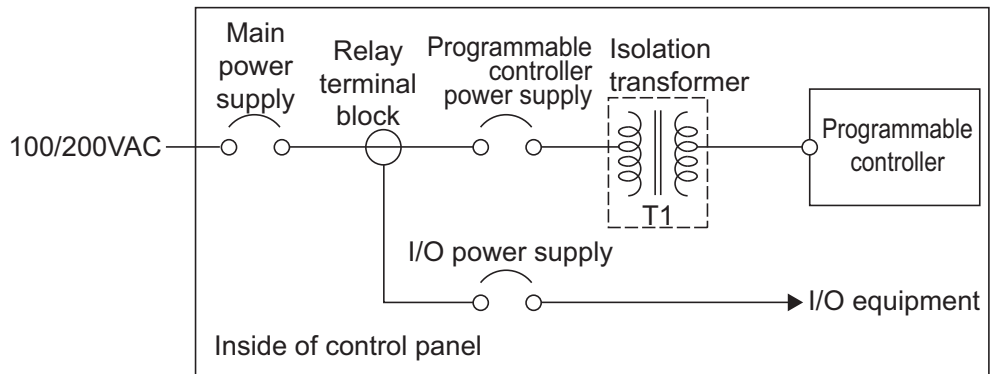
The following shows an example of wiring the connectors for external devices.



⚠ Caution

The pin arrangements of the connectors for external devices differ considerably from those of the I/O modules. Be sure to confirm the flat cable arrangement in the illustration shown above before connection.

Wire the power supply lines for the I/O equipment and the programmable controller separately as shown below.



Terminology

Isolation transformer : A two-winding transformer. The primary and secondary coils are wound separately to protect the secondary load.

Control panel : This is a panel that consists of breakers, switches, protection devices, relays, and programmable controllers, etc.

By combining them, the panel performs the following operation.

- Receiving signals from external switches and sensors
- Suppling electricity to operate motors and solenoid valves of external machines and equipment
- Giving the signals to other equipment.

5 Checking Power Supply

Check that the power supply runs normally after configuring the system, mounting modules, and wiring.

Operating procedure

1. Check before turning on the power supply.

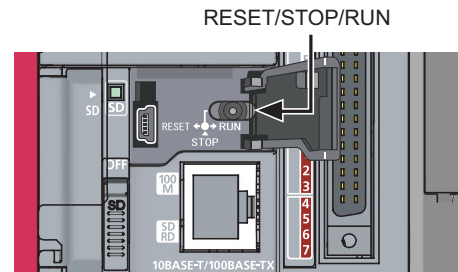
- Wiring of the power supply
- Power supply voltage

2. Set the CPU module to STOP.

Open the cover on the front of the CPU module and set the switch to STOP.

3. Turn on the power supply module.

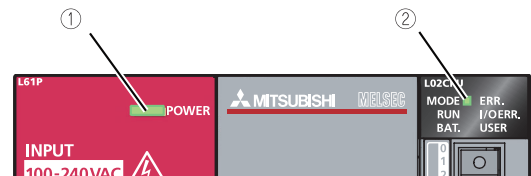
4. Check that the power supply runs normally.



Check the front LEDs on each module.

The following shows the normal state of the LEDs.

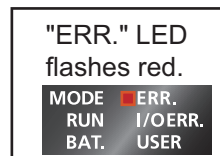
- ① Power supply module: "POWER" LED lights in green.
- ② CPU module: "MODE" LED lights in green.



When a parameter or program is not written to the CPU module, the "ERR." LED flashes red, but it is not a problem at this stage.

The LED goes off when a program is written.

➔ "7 Writing Programs" (P.22)



**Construction of the system is complete.
Turn off the power supply.**



- If the "POWER" LED of the power supply module is off, even though the power is turned on, check the wiring and installation statuses to confirm whether or not they are correct.
- If the "BAT." LED of the CPU module is flashing, check whether the battery has been correctly connected.



Parameter : Setup information necessary to operate the programmable controller system. Modules and the network are set by writing parameters to the CPU module.

6 Programming

Create a program (sequence program) for sequence control.

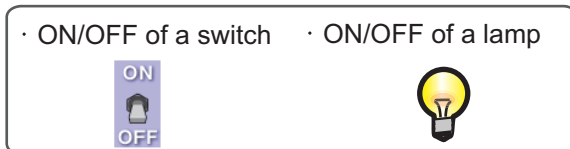
■ "Devices" and "Instruction symbols" in programming

Combine "Devices" and "Instruction symbols" to create a sequence program.

1. Devices

Devices include bit devices and word devices.

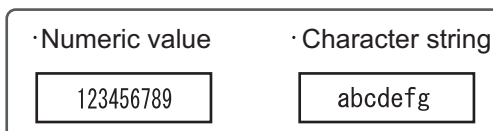
① Bit device : Handles one-bit information such as the ON/OFF of a switch or a lamp.



Examples of bit devices

Device name	Device symbol	Description
Input	X	Receives a signal from an external device such as a switch.
Output	Y	Outputs a signal to an external device such as a lamp.
Internal relay	M	Temporarily saves data status in programs.
Timer (contact)	T	Used to measure time. (When the set time comes, the contact is set to ON.)
Counter (contact)	C	Used to count the number of times the input condition turns from OFF to ON. (When the counter reaches the set number, the contact is set to ON.)

② Word device : Handles 16-bit information such as numeric values and character strings.



Examples of word devices

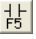
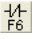
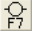
Device name	Device symbol	Description
Data register	D	Registers numeric values and character strings.
Timer (current value)	T	Used to measure time. (Stores the current value of measuring time.)
Counter (current value)	C	Used to count the number of times the input condition turns from OFF to ON. (Stores the current value of the counter.)

Terminology

Device	: A location to store data such as ON/OFF, numeric values, and character strings in the programmable controller.
Internal relay	: Breaks/connects the sequential circuit by switching ON/OFF.
Contact	: An input used when creating a sequence program.

2. Instruction symbols

The following shows the basic instructions of sequence control.


Instruction symbol	Description
	Open contact: Conducts when an input signal is set to ON.
	Closed contact: Conducts when an input signal is set to OFF.
	Coil output: Outputs data to a specified device.

Terminology

Coil : An output used when creating a sequence program.

Reference

This section explains the most basic devices and instructions. In addition to those listed above, other devices and instructions convenient for sequence control are available.

 MELSEC-Q/L Programming Manual (Common Instructions):SH-080809ENG


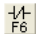

5

■ Creating a program

Create a sequence program for rehearsal.

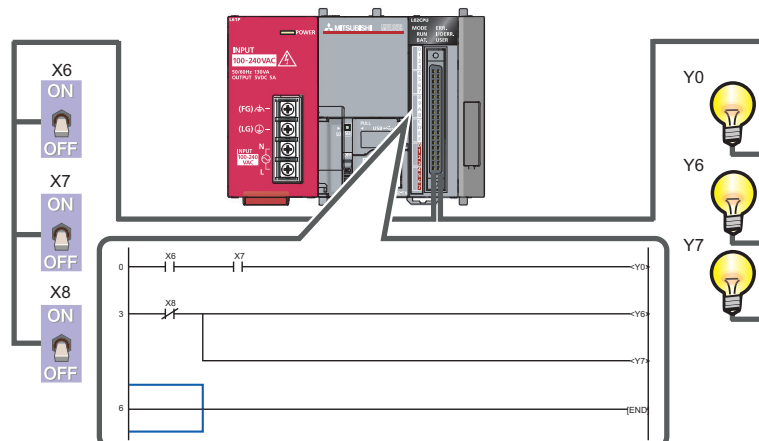
The following shows how to create a sequence program with basic devices and instruction symbols for sequence control.

The following devices and instruction symbols are used.

- Input : "X" device
- Output : "Y" device
- Instruction symbols :  ,  , 

Create a program that performs the following controls.

- When the X6 and X7 switches are turned on, the Y0 output lamp turns on.
- When the X8 switch is turned on, the Y6 and Y7 output lamps turn off.



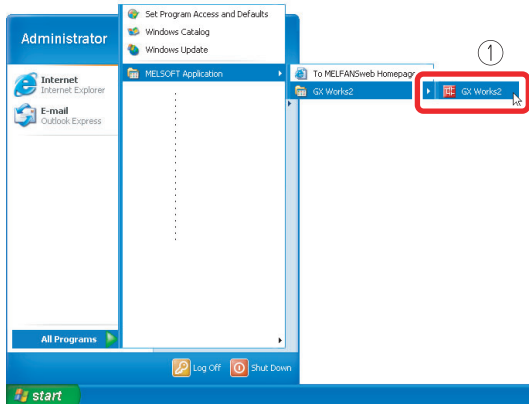
The following explains the procedure to create this sequence program.

6

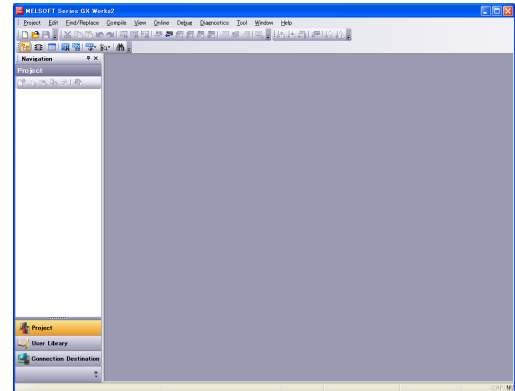
Starting GX Works2

Operating procedure

- 1 Select [Start] → [All Programs] → [MELSOFT Application] → [GX Works2] → [GX Works2].



After starting, the GX Works2 main screen is displayed.

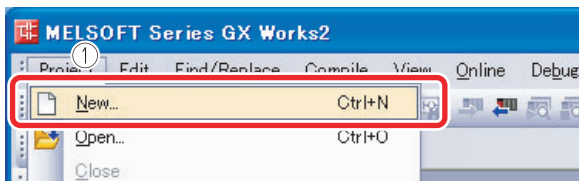


Creating a new project

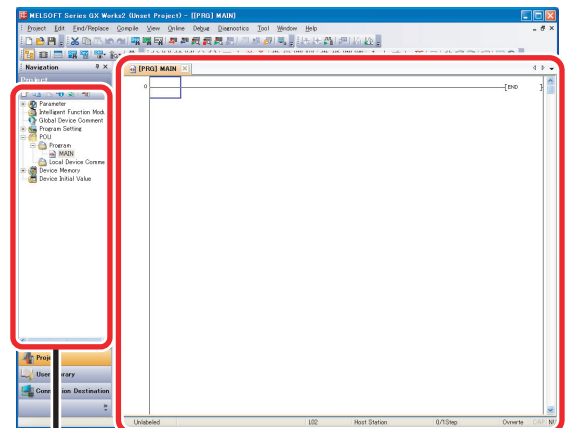
A project consists of programs, device comments, and parameters.

Operating procedure

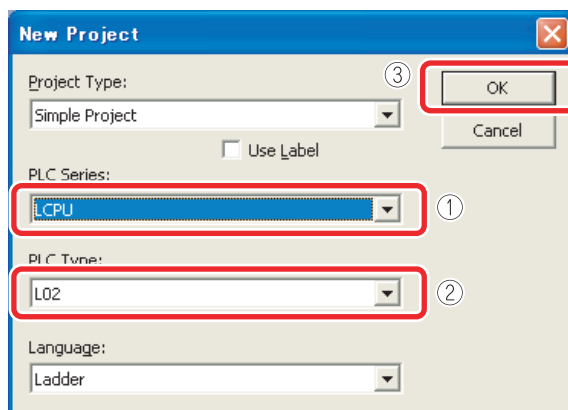
- 1 Select [Project] → [New...].



A project tree and a ladder screen are displayed.



- 1 Select "LCPU".
- 2 Select the LCPU to be used (L02 in this guide).
- 3 Click the button.

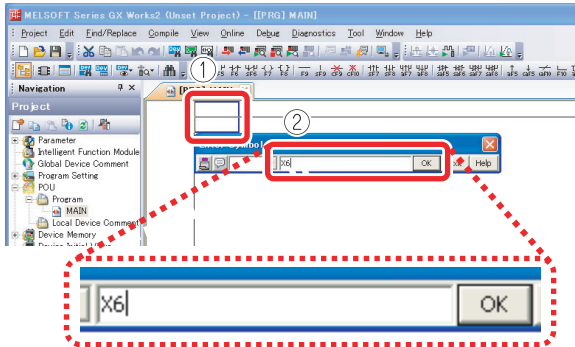


Creating a sequence program

Operating procedure

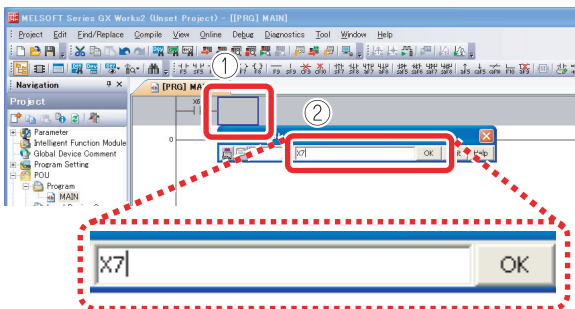
1. Enter $X6$

- Click the area to enter, and then enter "X".
- Enter "6" on the ladder input screen, and then click the button.



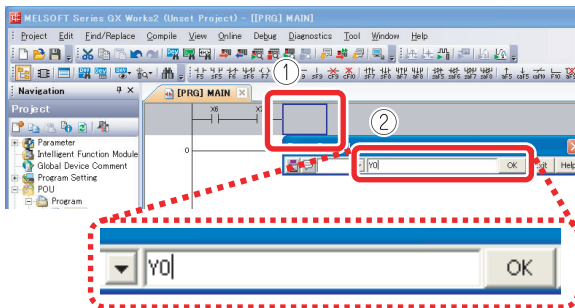
2. Enter $X7$

- Click the area to enter, and then enter "X".
- Enter "7" on the ladder input screen, and then click the button.

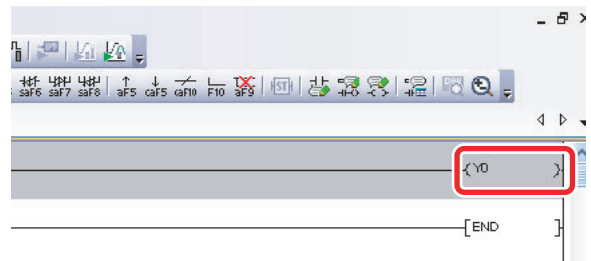


3. Enter $(Y0)$

- Enter "Y".
- Enter "0" on the ladder input screen, and then click the button.

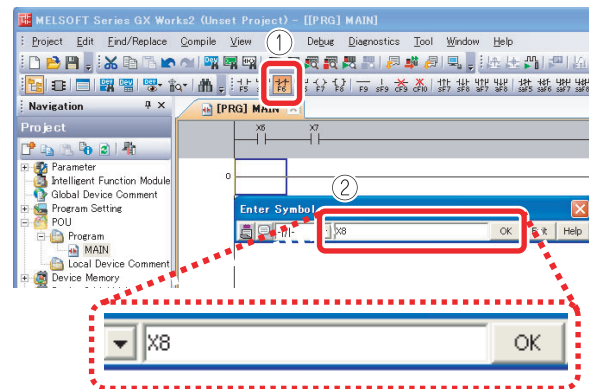


Coil Y0 is displayed.



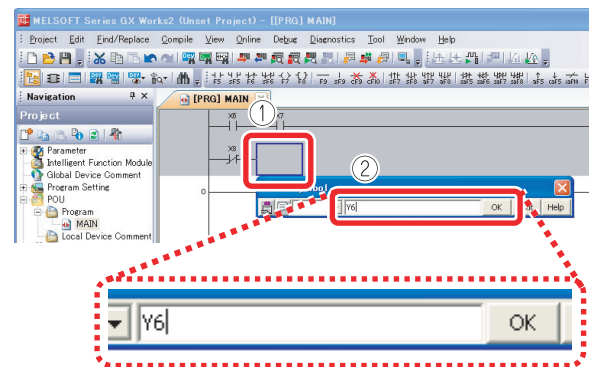
4. Enter $X8$

- Click $X8$.
- Enter device "X8", and then click the button.



5. Enter $(Y6)$

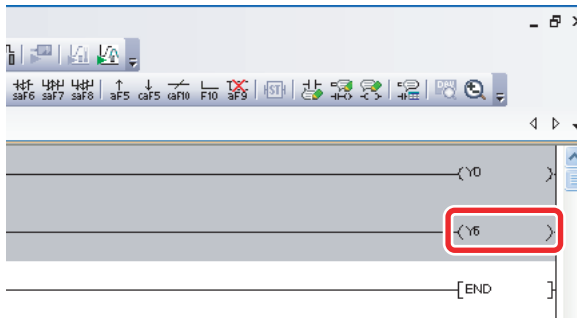
- Enter "Y".
- Enter "6" on the ladder input screen, and then click the button.



5

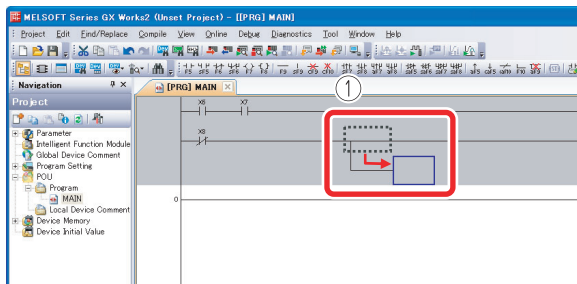
6

Coil Y6 is displayed.



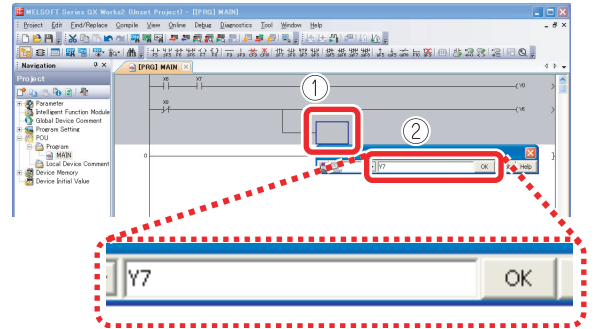
6. Draw a line.

- Click the area to enter, and then enter **Ctrl** + **↓** and **Ctrl** + **→**.

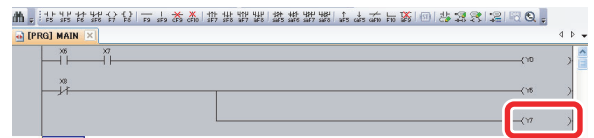


7. Enter (Y7).

- Enter "Y".
- Enter "7" on the ladder input screen, and then click the **OK** button.



Coil Y7 is displayed.



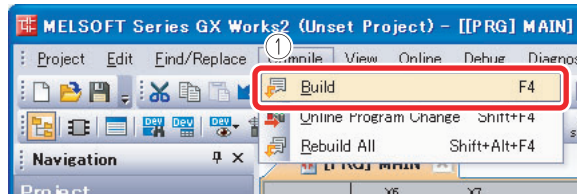
5

Converting a program

Define the contents of the entered ladder block.

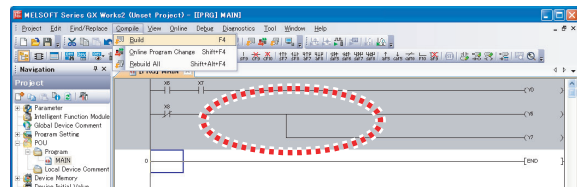
Operating procedure

- Select [Compile] → [Build].

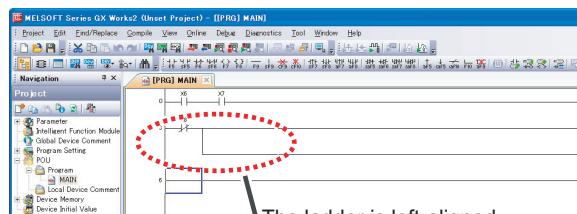


Perform the conversion to align entered ladders. When completed, the gray display turns to white.

[Before conversion]



[After conversion]



The ladder is left-aligned.

The programming is completed.

Lines can also be edited using the following short-cut keys.

Editing	Toolbar	Short-cut key
Drawing lines		F10
Inputting vertical lines		Shift + F9 Ctrl + ↓ / ↑
Inputting horizontal lines		F9 Ctrl + ← / →
Inputting horizontal lines continually	-	Ctrl + Shift + ← / →

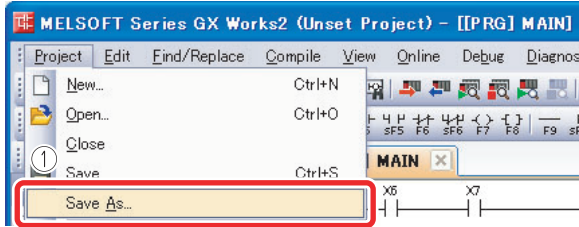
■ Saving a project

A program is saved in unit of project.

Save the created project with a name.

Operating procedure

① Select [Project] → [Save as].

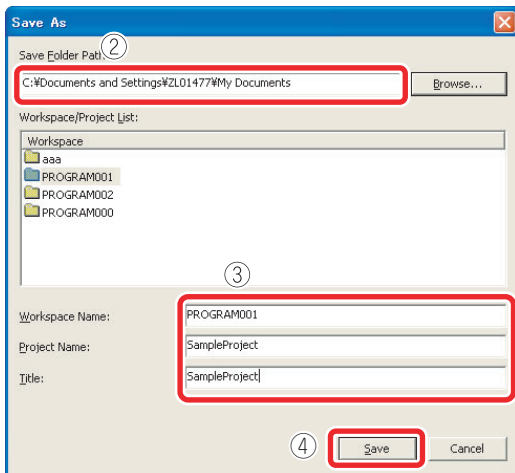


The "Save the project with a new name" screen is displayed.

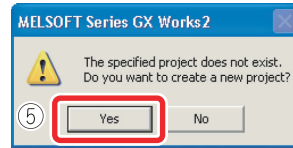
② Specify the save location.

③ Enter the work space name, project name, and title.

④ Click the button.



⑤ Click the button.



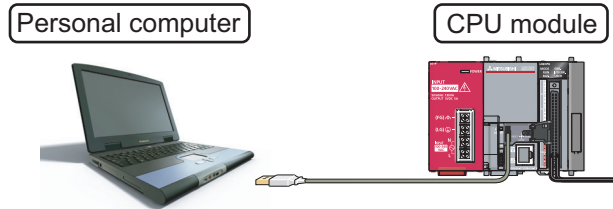
The project is saved.

7 Writing Programs

Write the program to the CPU module.

■ Connecting the CPU module and the personal computer

Connect the CPU module and the USB port of the personal computer with a USB cable.



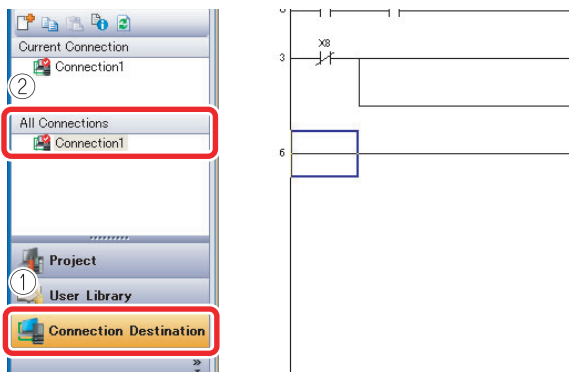
■ Turning on the programmable controller

Turn on the power supply module. Then turn on the power of the external power supply.

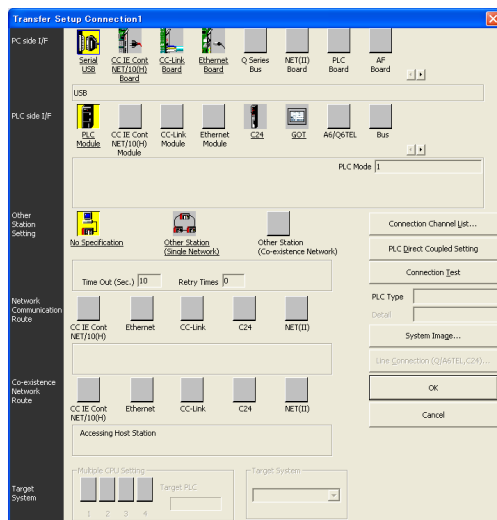
■ Setting GX Works2 and the programmable controller connection

Operating procedure

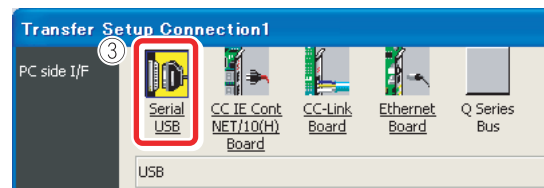
- ① Click [Connection Destination].
- ② Double-click the data name to be transferred.
- ③ Double-click "Serial USB".



The "Transfer Setup Connection" screen is displayed.

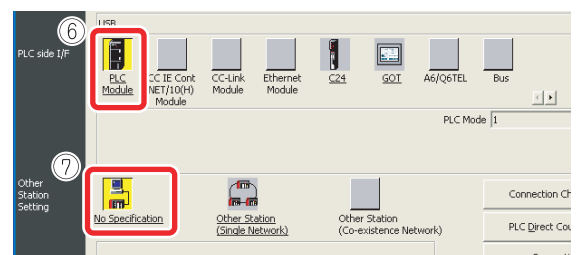
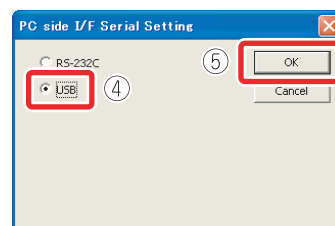


- ④ Select "USB".
- ⑤ Click the button.



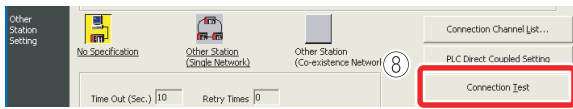
The "PC side I/F Serial setting" screen is displayed.

- ⑥ Click "PLC module".
- ⑦ Click "No Specification".



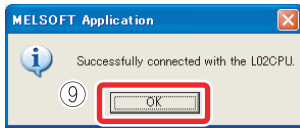
The connection setting is completed.

- ⑧ Click the **Connection Test** button.

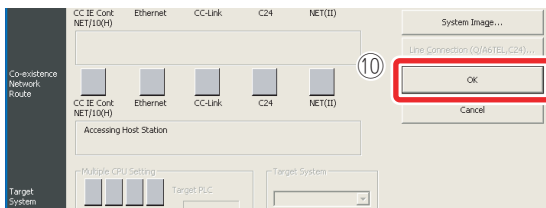


When properly connected, the connection completion message is displayed.

- ⑨ Click the **OK** button.



- ⑩ Click the **OK** button.



If the screen shown below is displayed after step 8 is performed, check that the USB driver has been installed correctly and that an appropriate connection cable (USB cable) is being used. For the installation of the USB driver, refer to the following manual.

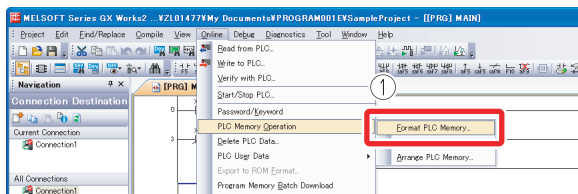
➔ GX Works2 Installation Instructions: BCN-P5713

■ Formatting the CPU module

Before writing the program, format the CPU module to set it to the initial status.

Operating procedure

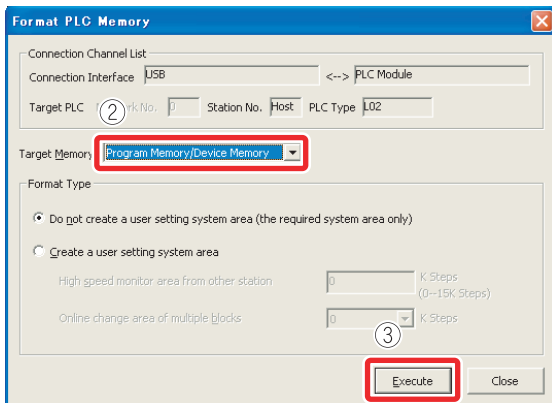
- ① Select [Online] → [PLC memory operation] → [Format PLC memory].



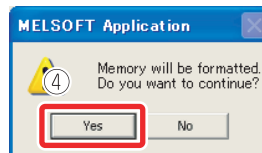
The "Format PLC memory" screen is displayed.

- ② Select "Program Memory/Device Memory" from "Target Memory".

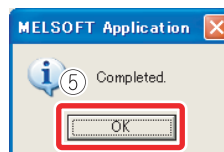
- ③ Click the **Execute** button.



- ④ Click the **Yes** button.



- ⑤ Click the **OK** button.



The CPU module format is completed.

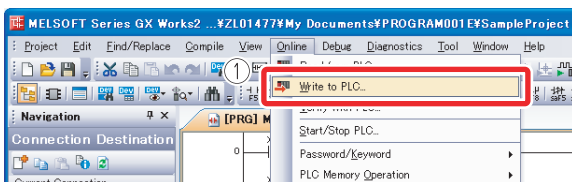
Click the **Close** button to close the "Format PLC Memory" screen.

If data such as programs and parameters are already stored in the CPU module, they are deleted. Thus the necessary data should be read from the CPU module and saved as a project before executing the Format PLC "Format PLC Memory" function.

■ Writing programs to the CPU module

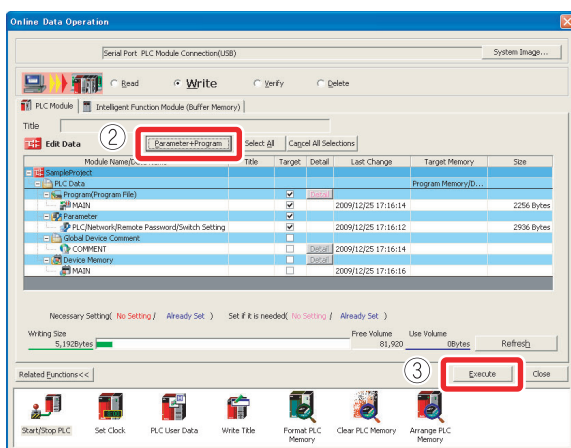
Operating procedure

- 1 Select [Online] → [Write to PLC].



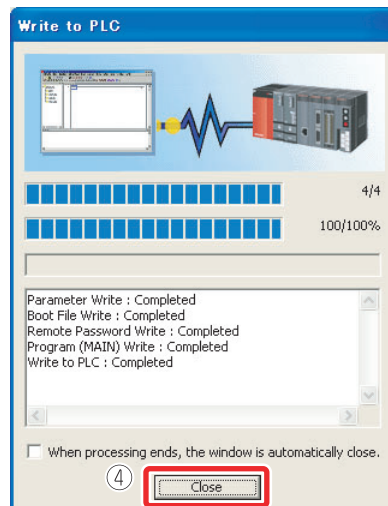
The "Online Data Operation" screen is displayed.

- 2 Click "Parameter + Program". "Program" and "Parameter" are checked.
- 3 Click the button.



When the "Write to PLC" function is properly executed, the following message is displayed.

- 4 Click the button.



The program writing is completed.

Click the button to close the "Online Data Operation" screen.

5

7

8 Checking Operation

Execute the program written to the CPU module to check the operation.

Check the program operation with the switches and lamps or the monitor function of GX Works2.

■ Executing the program written to the CPU module

Use the "RESET/STOP/RUN" switch on the front of the CPU module for the operation.

[The usage of the RESET/STOP/RUN switch]

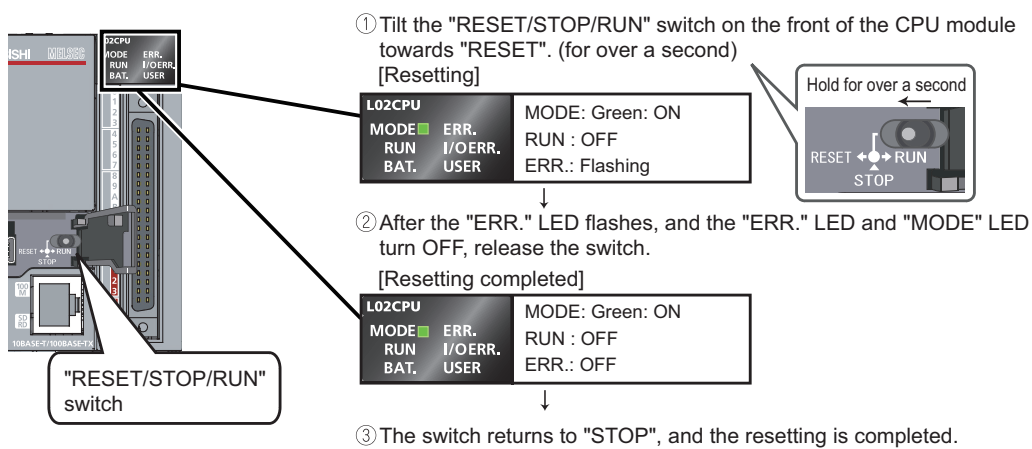
RUN : Executes the sequence program operation.

STOP : Stops the sequence program operation.

RESET : Performs the hardware reset, operation error reset, and operation initialization.

Operating procedure

1. Resetting the CPU module

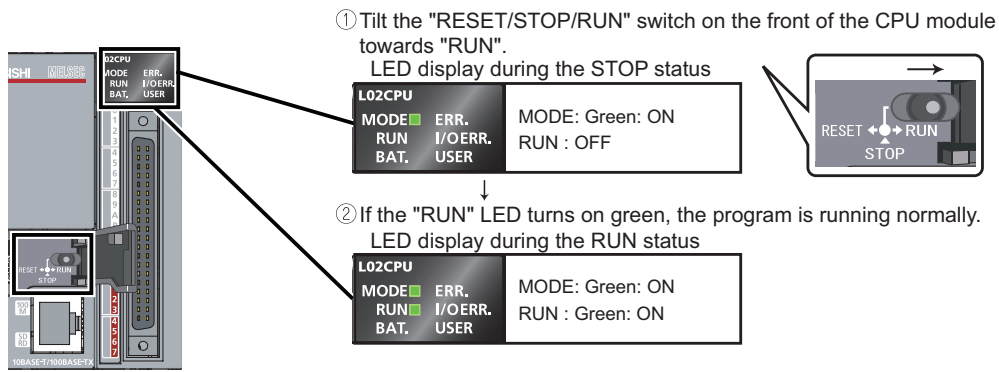


Reference

If the "ERR." LED does not turn off, refer to the following manual.

➔ MELSEC-L CPU Module User's Manual (Hardware Design, Maintenance and Inspection)
: SH-080890ENG

2. Executing the program



Caution

Do not use pointed tools such as a screwdriver when operating the switch.
They may damage the switch.

■ Using switches and lamps to check the operation

Check the program operation by turning the switches and lamps ON/OFF.

If all of the switches (X6, X7, and X8) are off right after the execution of the program, the output lamp Y0 stays off and the output lamp Y6 and the output lamp Y7 stay on due to the instructions from the created program.

1. Operation check 1

Turn on the switch X6. → The output lamp Y0 stays off and the output lamps Y6 and Y7 stay on.

2. Operation check 2

Turn on the switch X7. → The output lamp Y0 turns on.

3. Operation check 3

Turn on the switch X8. → The output lamps Y6 and Y7 turn off.

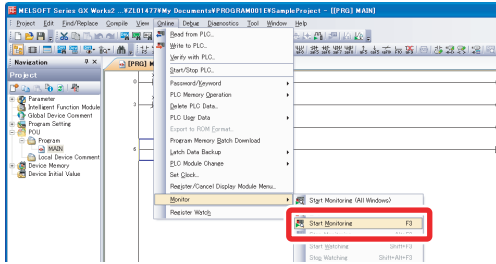
■ Checking the operation in GX Works2

Check the program operation by using the monitor mode on the GX Works2 screen, where switches and lamps can be operated and their statuses can be checked.

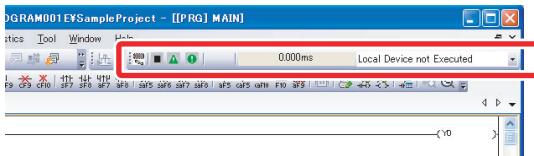
Operating procedure

1. Set the operating program display screen to the monitor mode.

Select [Online] → [Monitor] → [Start Monitoring].



Execute the monitor to display the "Monitor status" screen.



The ON/OFF status of bit devices can be checked on the ladder screen.

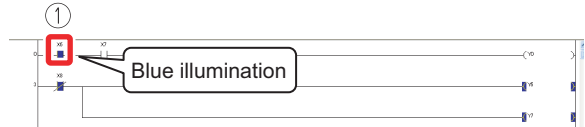
Contacts/outputs set to ON are displayed in blue.

Right after the program execution, bit devices X8, Y6, and Y7 are lit in blue due to the instructions from the program.



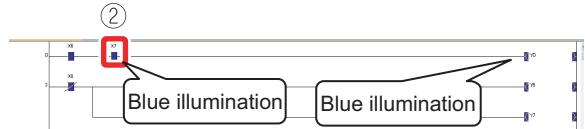
2. Operation check 1

- ① Double-click X6 while pressing the **Shift** key → X6 turns on.



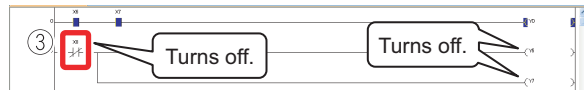
3. Operation check 2

- ② Double-click X7 while pressing the **Shift** key → X7 turns on and Y0 lights.



4. Operation check 3

- ③ Double-click X8 while pressing the **Shift** key → X8 turns off and Y6 and Y7 turn off.



Point

While pressing the **Shift** key, double-click devices set to ON in Operation checks 1 and 2 to turn them off.

Frequently-used functions

This section explains functions frequently used in GX Works2.

Clarifying programs <Comment> (P.29)

Device comment

Statement

Note

Monitoring device values and status <Device monitor> (P.34)

Device batch monitor

Entry data monitor

Changing device values <Device test> (P.38)

Bit device forced ON/OFF

Word device current value change

Changing running programs <Online program change> (P.41)

Checking errors <Error jump> (P.42)

PLC diagnostics

Error jump

Monitoring system status <System monitor> (P.45)

Clarifying programs <Comment>

Use comments to clarify the contents of a program.



The following are the three types of comment.

Type	Description	Number of characters
Device comment	Describes roles and usage of each device.	32
Statement	Describes roles and usage of ladder blocks.	64
Note	Describes roles and usage of output instructions.	32



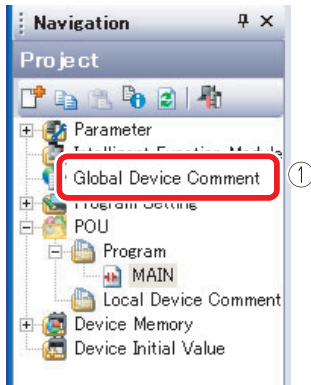
Select [View] → [Comment](key + key) to switch the comment display/hide setting.

■ Creating device comments

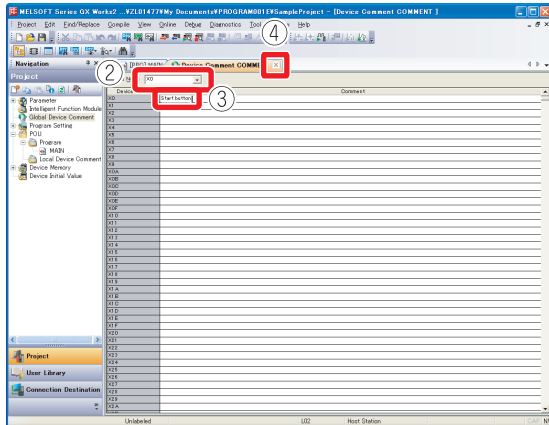
Device comments can be entered from the list or on the ladder diagram.

<Input operation from the list>

- 1 Double-click [Global Device Comment] in the project list.



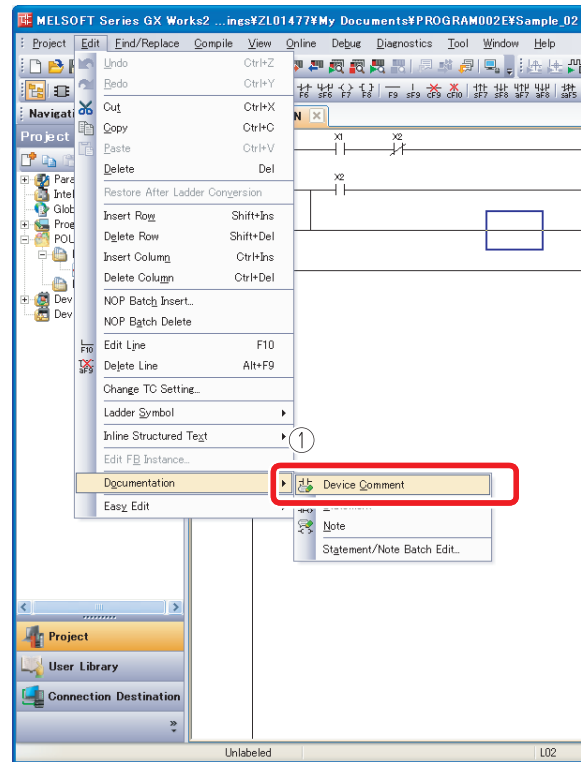
- 2 Enter the start device number in "Device Name" and press the [Enter] key.
- 3 Enter a comment in the "Comment" column.
 - * When entering comments for other devices, repeat Steps 2 and 3.



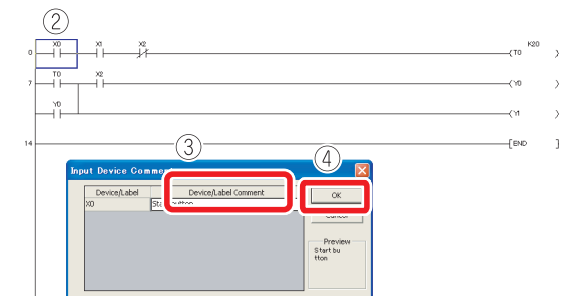
- 4 Click the button to close the screen.

<Input operation on the ladder diagram>

- 1 Select [Edit] → [Documentation] → [Device Comment].



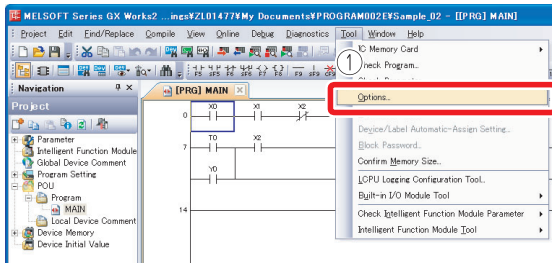
- 2 Double-click the ladder symbol to enter a comment.
- 3 Enter a comment on the "Input DeviceComment" screen.
- 4 Click the button.



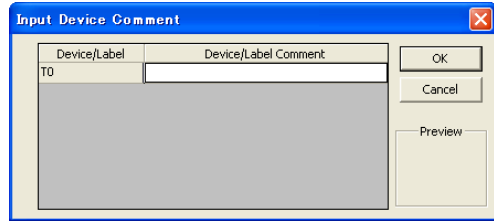
- 5 Select the [Device Comment] menu in Step 1 again to finish the operation.

Entering comments when creating ladders

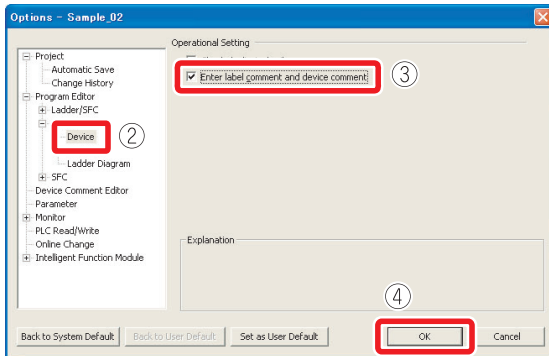
- 1 Select [Tool] → [Options].



After the ladder entry operation, the "Device Comment" screen is displayed and a comment can be entered.



- 2 Select "Program Editor" → "Ladder" → "Device".
- 3 Select "Enter label comment and device comment".

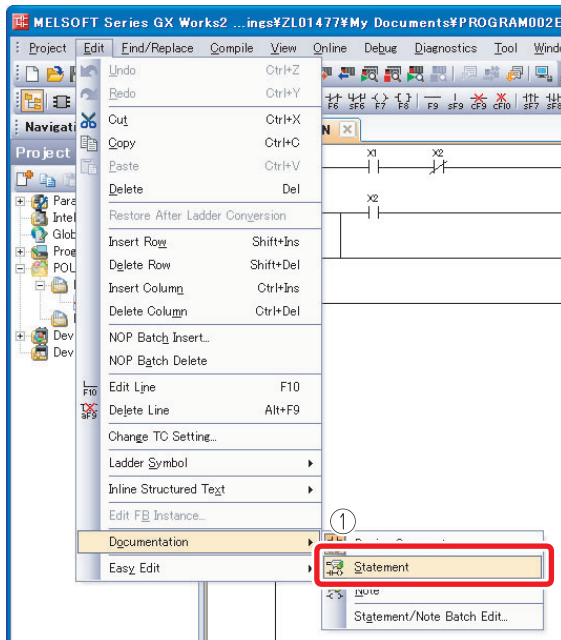


- 4 Click the button.

■ Creating statements

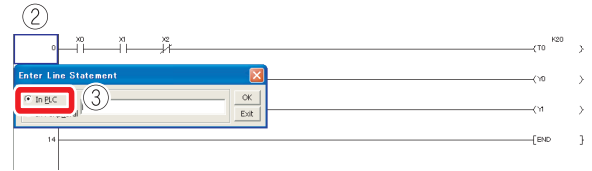
Operating procedure

- ① Select [Edit] → [Documentation] → [Statement].



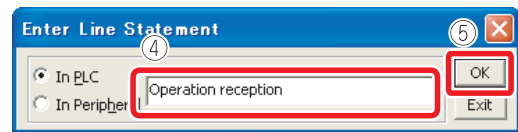
- ② Double-click a ladder symbol to enter a statement.

- ③ Select "In PLC".



- ④ Enter a statement.

- ⑤ Click the button.



- ⑥ Select the [Statement] menu in Step ① again to finish the operation.

If a statement is entered, the program needs to be "converted" to reflect the input. For details on the conversion, refer to the following.

☞ "6 Programming-Converting a program"(P.20)



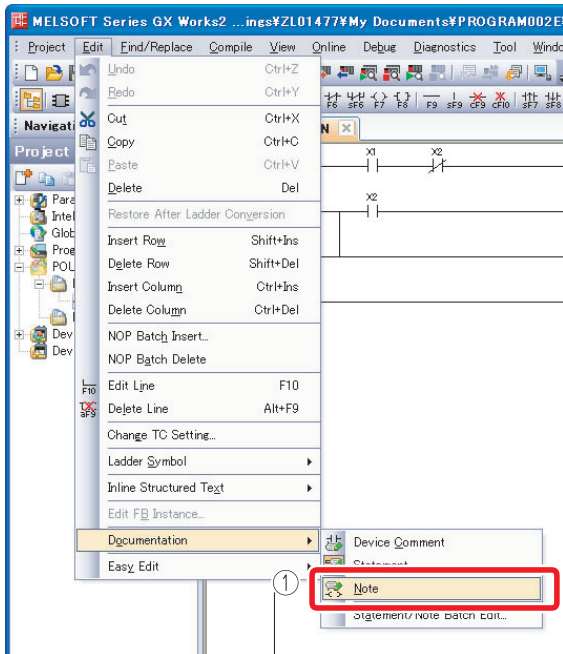
The following are the two types of statement.

- PLC statement
Integrated statements can be written to/read from the CPU module.
- Peripheral statement
The program memory capacity can be saved since peripheral statements are not written to the CPU module. "*" is prefixed to the peripheral statement in the program.

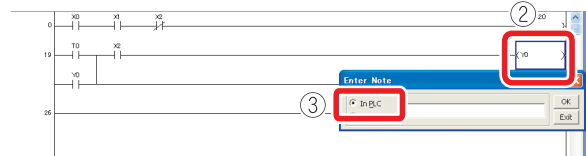
■ Creating notes

Operating procedure

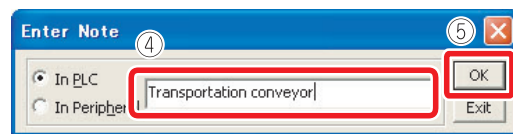
- 1 Select [Edit] → [Documentation] → [Note].



- 2 Double-click an output instruction to enter a note.
- 3 Select "In PLC".



- 4 Enter a note.
- 5 Click the button.



- 6 Select the [Note] menu in Step 1 again to finish the operation.

If a note is entered, the program needs to be "converted" to reflect the input. For details on the conversion, refer to the following.

☞ "[6] Programming-Converting a program"(P.20)



The following are the two types of note.

- PLC note
Integrated notes can be written to/read from the CPU module.
- Peripheral note
The program memory capacity can be saved since peripheral notes are not written to the CPU module. "*" is prefixed to the peripheral note in the program.

Monitoring device values and status <Device monitor>

The following are the two types of device monitor.

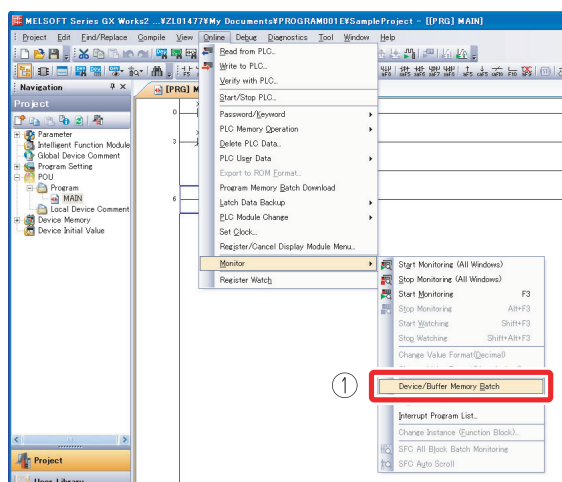
Type	Purpose
Device batch monitor	Used to monitor consecutive devices of one type.
Entry data monitor	Used to simultaneously monitor separately-located devices in the ladder or various devices on one screen.

■ Device batch monitor

Monitors consecutive devices by specifying the start device number.

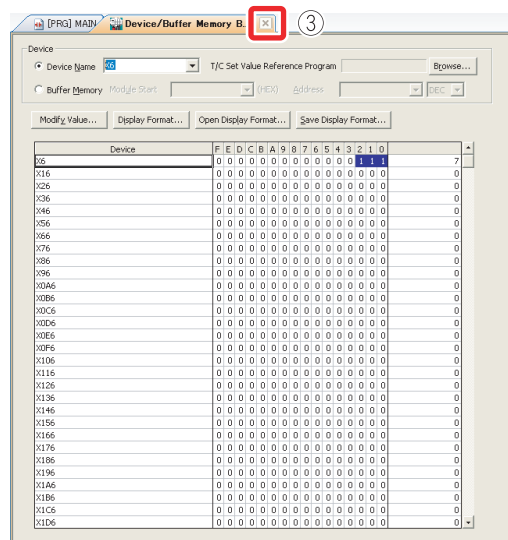
Operating procedure

- 1 Select [Online] → [Monitor] → [Device/Buffer memory batch].

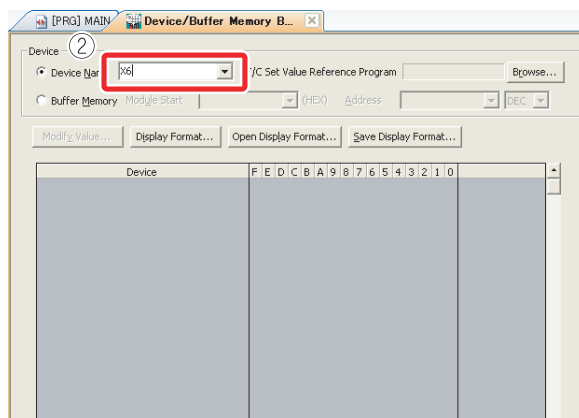


The values of devices and the ON/OFF status of contacts/coils are displayed.

- 3 Click the button to close the screen.



- 2 Enter the start device number to be monitored and press the key.



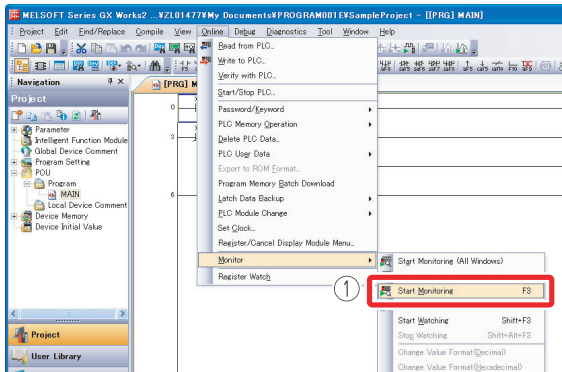
■ Entry data monitor

The device registration methods used to perform the Entry data monitoring are the specified device registration and the device registration with ladder monitor display. The device statuses can be displayed in watch windows 1 to 4.

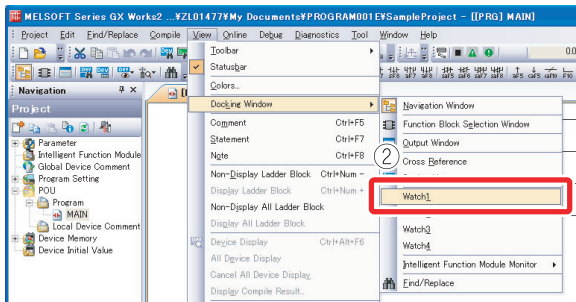
<Specified device registration>

Register specified devices in Watch window 1.

- 1 Select [Online] → [Monitor] → [Start Monitoring].

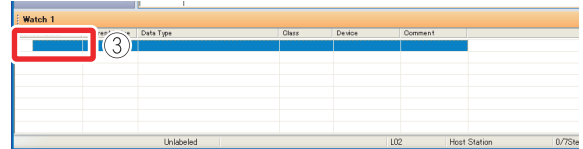


- 2 Select [View] → [Docking Window] → [Watch1].

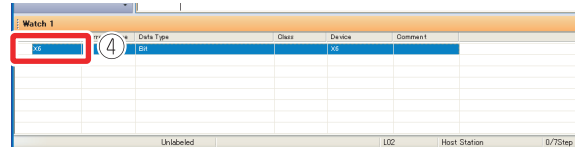


* Watch window 1 is displayed on the bottom right of the screen.

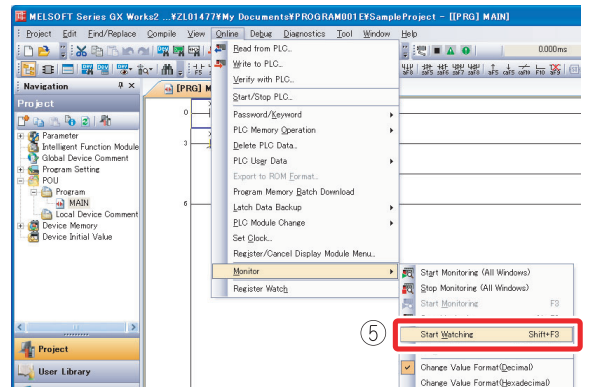
- 3 Double-click the "Device/Label" column.



- 4 Enter the device/label to be registered and press the **Enter** key.



- 5 Select [Online] → [Monitor] → [Start Watching].

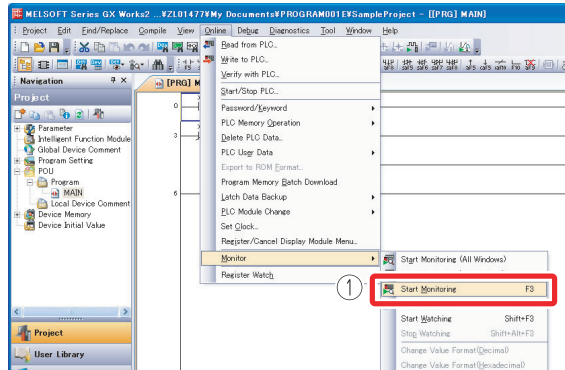


The values of devices and the ON/OFF status of contacts/coils are displayed.

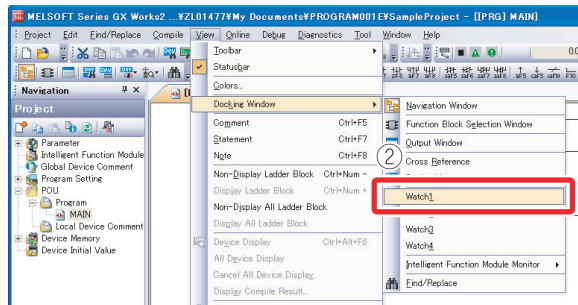
<Device registration with ladder monitor display>

Specify the range of the ladder diagram on the ladder monitor screen and register the devices in a batch.

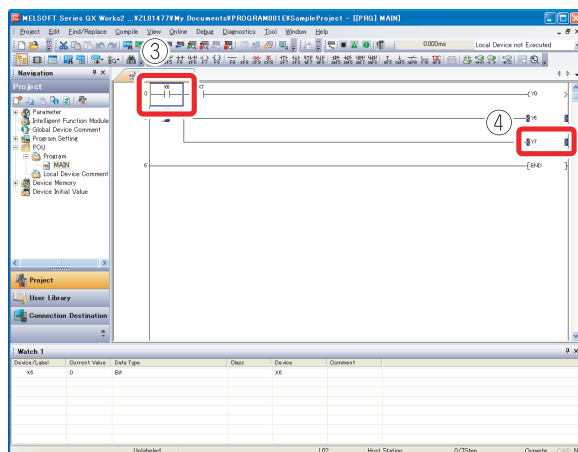
- 1 Select [Online] → [Monitor] → [Start Monitoring].



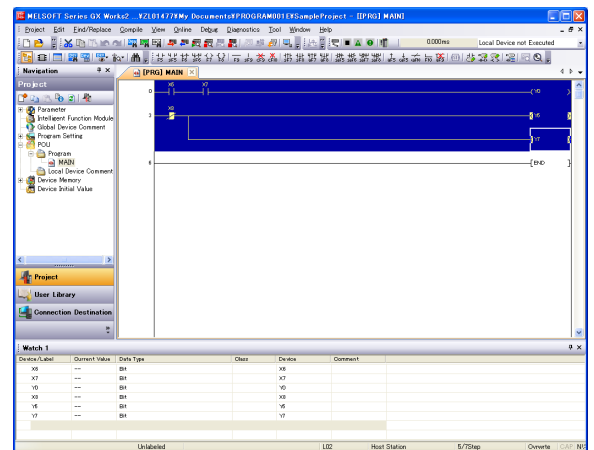
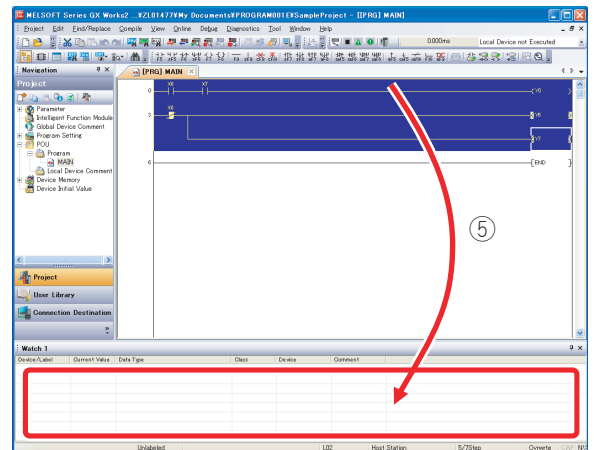
- 2 Select [View] → [Docking Window] → [Watch1].



- 3 Click the start point of the ladder.
- 4 Click the end point of the ladder while pressing the **Shift** key → The range is specified.

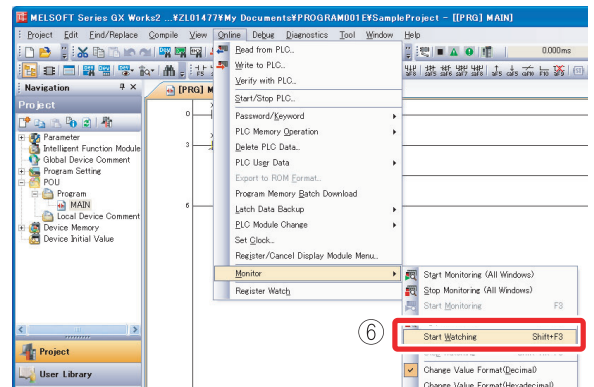


- 5 Drag and drop the selected range to the watch window 1.



The values of the selected devices are monitored.

- 6 Select [Online] → [Monitor] → [Start Watching].



Register devices to the Watch window.

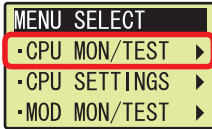
6

Installing the display unit allows you to monitor specified device memory values without using GX Works2.

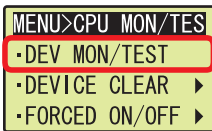
Operating procedure

The following is an example of monitoring the Y6 value.

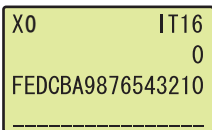
- ① Select "function selection" screen > "CPU MON/TEST", and then click the **▶** button.



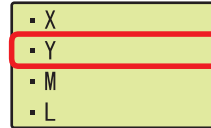
- ② Select "DEV MON/TEST", and then click the **OK** button.



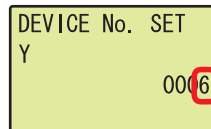
- ③ Click the **◀** button on the screen shown below.



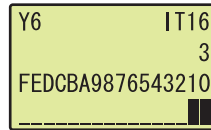
- ④ Select a device using **▲** or **▼**, and then click the **OK** button.



- ⑤ Move the cursor position using **◀** or **▶**, and increase/decrease the value for each digit one number at a time to specify the device number using **▲** or **▼**, and then click the **OK** button.



The Y6 value is displayed.



Changing device values <Device test>

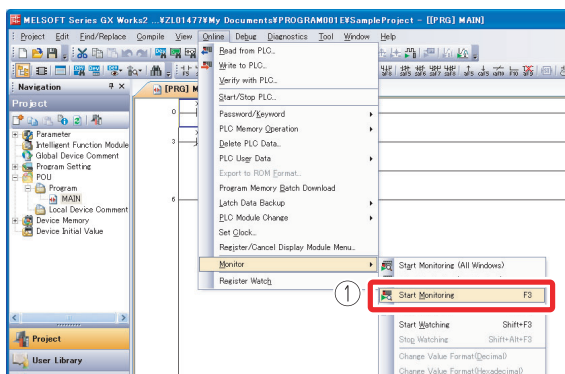
This function forcibly turns on/off the bit devices (X and Y) or changes the current value of the word device (such as T, C, and D).

■ Forced ON/OFF of bit device

Turn on/off forcibly the bit device (X and Y) of the CPU module.

Operating procedure

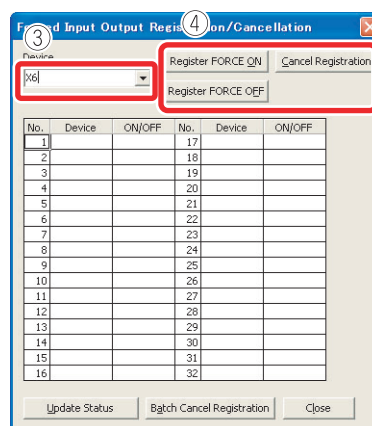
- 1 Select [Online] → [Monitor] → [Start Monitoring].



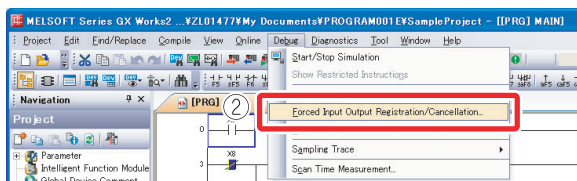
- 3 Enter a device to be turned on/off forcibly.

- 4 Turn on/off the device forcibly.

[Register FORCE ON] : Turns on the device.
 [Register FORCE OFF] : Turns off the device.
 [Cancel Registration] : Cancels the registration of the specified device.



- 2 Select [Debug] → [Forced Input Output Registration/Cancellation..].

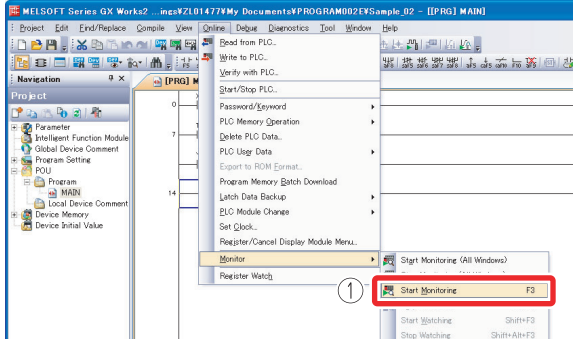


Word device current value change

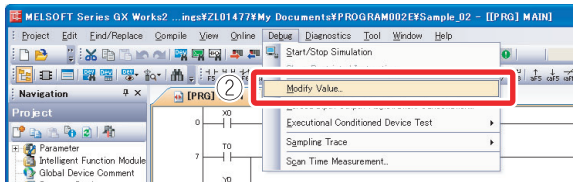
Changes the current value of the word device (such as T, C, and D) in the CPU module to the specified value.

Operating procedure

- 1 Select [Online] → [Monitor] → [Start Monitoring].



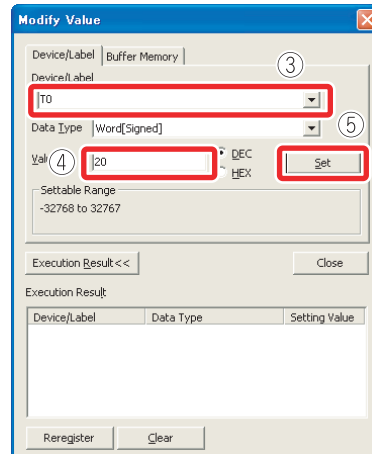
- 2 Select [Debug] → [Modify Value].



- 3 Enter the device number to be changed.

- 4 Enter the value to be changed.

- 5 Click the button.

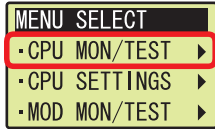


Installing the display unit allows the forced ON/OFF of X/Y device with the operation of the display unit.

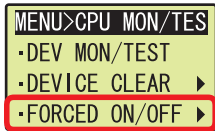
Operating procedure

The following is an example of operating the forced ON/OFF of X7.

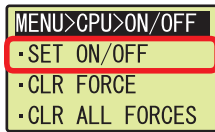
- ① Select "function selection" screen > "CPU MON/TEST", and then click the ► button.



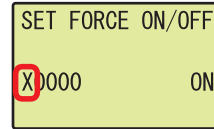
- ② Select "FORCED ON/OFF", and then click the ► button.



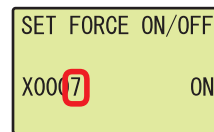
- ③ Select "SET ON/OFF", and then click the **OK** button.



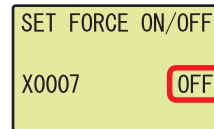
- ④ Select X/Y using ▲ or ▼.



- ⑤ Move the cursor position using ◀ or ▶, and increase/decrease the value for each digit one number at a time to specify the device number using ▲ or ▼.



- ⑥ Move the cursor position using ◀ or ▶, switch ON/OFF using ▲ or ▼, and then click the **OK** button.



Changing running programs <Online program change>

This function writes only the modified ladder block to the CPU module while the CPU module is in the "RUN" status.

A program can be written in a short time since this function does not transfer the whole program.

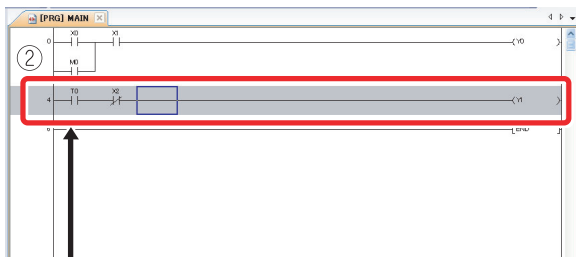
The following is an example of adding a contact to the ladder.

Operating procedure

- 1 Display the ladder.



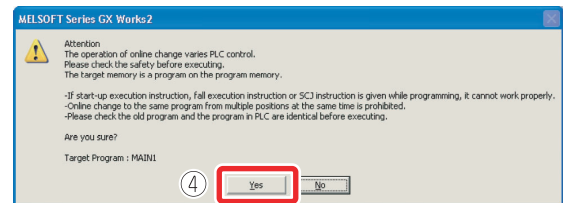
- 2 Add contacts.



The ladder block is displayed in gray.

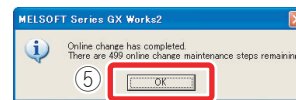
- 3 Select [Compile] → [Online Program Change].

- 4 Click the button.



When the online program change has been properly completed, the following message is displayed.

- 5 Click the button.



Caution

The program in the CPU module and the program to be modified in GX Works2 must be the same to perform the online program change. If you are not sure, verify the programs in advance or modify the ladder after performing the "Read from PLC" function.

Checking errors <Error jump>

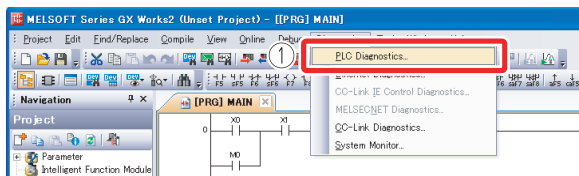
If an error occurs, it can be checked with PLC diagnostics. By using the Error jump, you can jump to the step number of the sequence program corresponding to the error.

■ PLC diagnostics

The details of errors occurring can be checked from the PLC diagnostics.

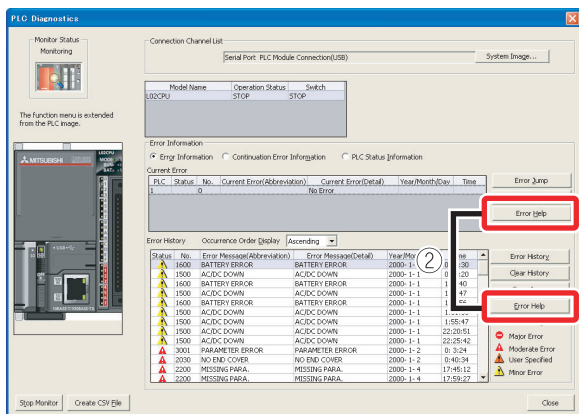
Operating procedure

- 1 Select [Diagnostics] → [PLC diagnostics].



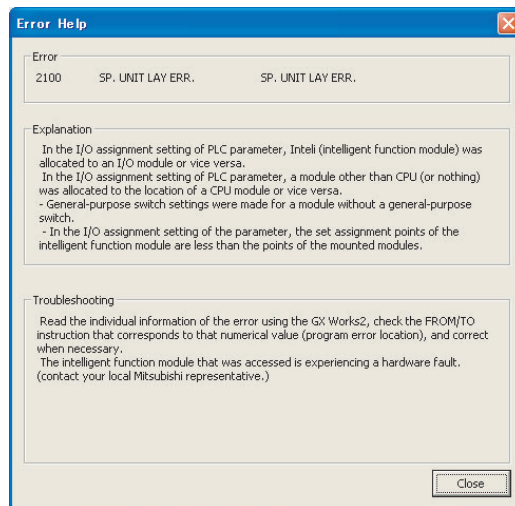
PLC diagnostics screen (example)

- 2 Click the [Error Help] button of the current error or the error history.



Help screen (example)

The details of the error and its countermeasures are displayed.

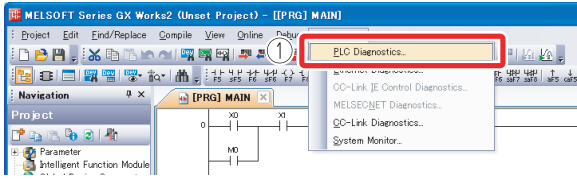


Error jump

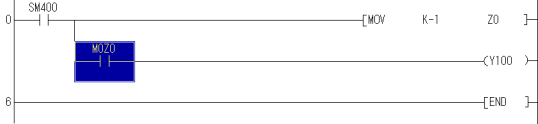
Errors can be checked easily with the error jump function of PLC diagnostics.

Operating procedure

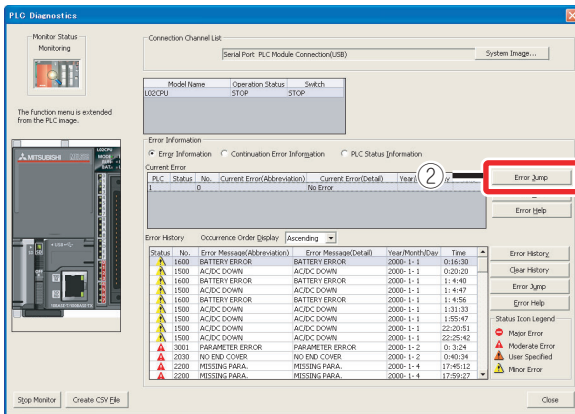
- 1 Select [Diagnostics] → [PLC diagnostics].



The cursor jumps to the step number of the sequence program corresponding to the selected error.



- 2 Click the [Error Jump] button.

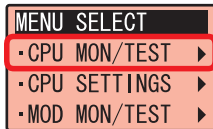


Installing the display unit allows you to confirm the errors occurring and errors which have occurred in the past with the display unit.

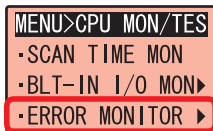
Operating procedure

The following is an example of the operating procedure to check the latest errors occurring in the CPU module.

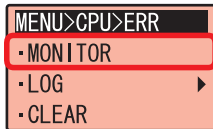
- ① Select "function selection" screen > "CPU MON/TEST", and then click the **▶** button.



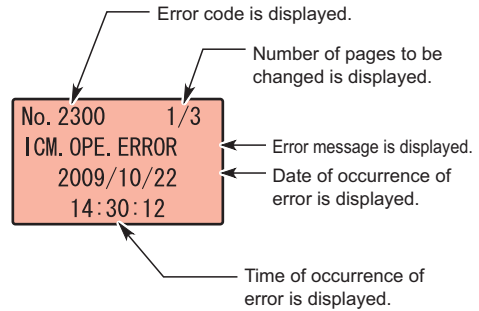
- ② Select "ERROR MONITOR", and then click the **▶** button.



- ③ Select "MONITOR", and then click the **OK** button.



Error information is displayed.



Use **▶** or **◀** to display individual error information and common error information.

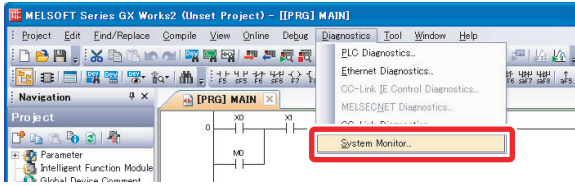
- To return to the previous screen, click the **ESC** button.
 - The error history can be displayed and "Clearing the errors", etc. can also be performed using the display unit.
- MELSEC-L CPU Module User's Manual (Function Explanation, Program Fundamentals): SH-080889ENG

Monitoring system status <System monitor>

This function monitors the system status of the CPU module and other modules.

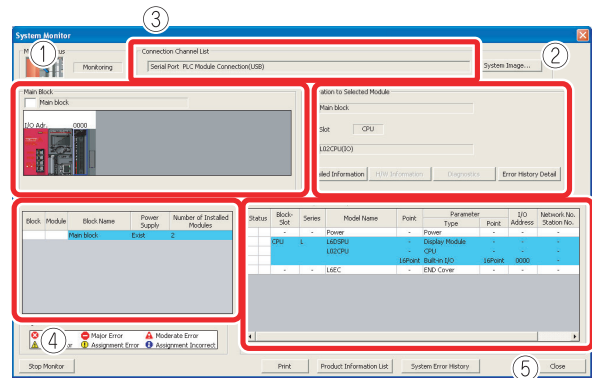
Operating procedure

Select [Diagnostics] → [System Monitor].



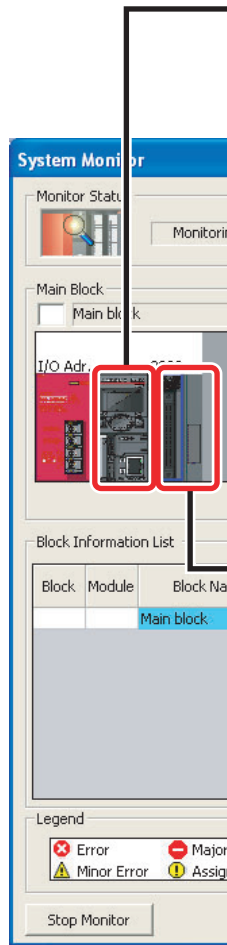
The "System monitor" screen is displayed.

- ① Main block
- ② Operation to selected module
- ③ Connection channel list
- ④ Block information list
- ⑤ Module information list



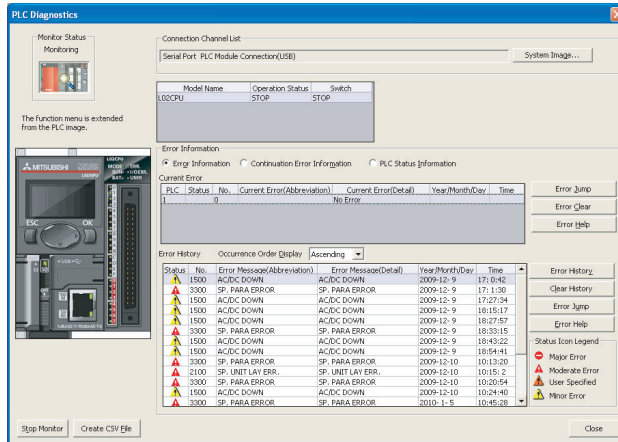
No.	Description
①	Main block: Displays the module operation statuses and I/O addresses.
②	Operation to selected module: Displays the I/O and model of the module being selected.
③	Connection channel list: Displays the details of the connection target being set.
④	Block information list: Displays the block information.
⑤	Module information list: Displays the model, type, and start I/O of the module being selected.

- The details of each module can be checked from the "System Monitor" screen.



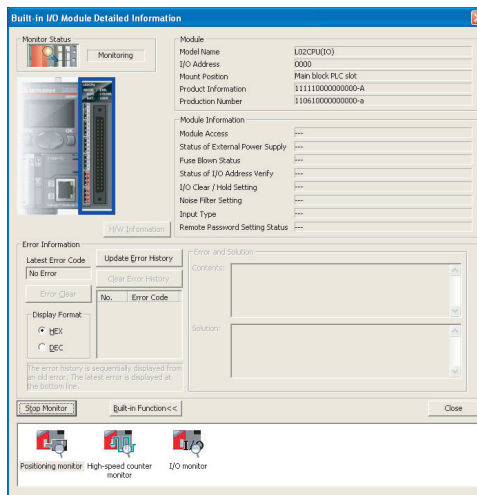
Double-click the CPU module.

→ The "PLC Diagnostics" screen is displayed and the operation status of the CPU module can be checked.



Double-click each module (excluding CPU and power supply).

→ The "Module Detailed Information" screen is displayed and the operation status of each module can be checked. The built-in I/O can also be checked.



Microsoft, Microsoft Access, Excel, SQL Server, Visual Basic, Visual C++, Visual Studio, Windows, Windows NT, Windows Server, Windows Vista, and Windows XP are either registered trademarks or trademarks of Microsoft Corporation in the United States and/or other countries.

The SD and SDHC logos are trademarks of SD-3C, LLC.

The company names, system names and product names mentioned in this manual are either registered trademarks or trademarks of their respective companies.



Precautions for Choosing the Products

This publication explains the typical features and functions of the L Series programmable controllers and does not provide restrictions and other information on usage and module combinations. When using the products, always read product user manuals.

Mitsubishi Electric will not be held liable for damage caused by factors found not to be the cause of Mitsubishi Electric; opportunity loss or lost profits caused by faults in Mitsubishi Electric products; damage, secondary damage, accident compensation caused by special factors unpredictable by Mitsubishi; damages to products other than Mitsubishi Electric products; and to other duties.

For safe use

- To use the products given in this publication properly, always read the "manuals" before starting to use them.
- The products have been manufactured as general-purpose parts for general industries, and have not been designed or manufactured to be incorporated in a device or system used in purposes related to human life.
- Before using the products for special purposes such as nuclear power, electric power, aerospace, medicine or passenger movement vehicles, consult with Mitsubishi.
- The products have been manufactured under strict quality control. However, when installing the products where major accidents or losses could occur if the products fail, install appropriate backup or failsafe functions in the system.

Programmable Controller

MELSEC-L Series Quick Start Guide

Country/Region	Sales office	Tel/Fax
USA	MITSUBISHI ELECTRIC AUTOMATION, INC. 500 Corporate Woods Parkway, Vernon Hills, IL 60061, U.S.A.	Tel : +1-847-478-2100 Fax : +1-847-478-2253
Mexico	MITSUBISHI ELECTRIC AUTOMATION, INC. Mexico Branch Mariano Escobedo #69, Col. Zona Industrial, Tlalnepantla Edo. Mexico, C.P.54030	Tel : +52-55-3067-7500
Brazil	MITSUBISHI ELECTRIC DO BRASIL COMÉRCIO E SERVIÇOS LTDA. Avenida Adelino Cardana, 293, 21 andar, Bethaville, Barueri SP, Brazil	Tel : +55-11-4689-3000 Fax : +55-11-4689-3016
Germany	MITSUBISHI ELECTRIC EUROPE B.V. German Branch Mitsubishi-Electric-Platz 1, 40882 Ratingen, Germany	Tel : +49-2102-486-0 Fax : +49-2102-486-1120
UK	MITSUBISHI ELECTRIC EUROPE B.V. UK Branch Travellers Lane, Hatfield, Hertfordshire, AL10 8XB, U.K.	Tel : +44-1707-28-8780 Fax : +44-1707-27-8695
Ireland	MITSUBISHI ELECTRIC EUROPE B.V. Irish Branch Westgate Business Park, Ballymount, Dublin 24, Ireland	Tel : +353-1-4198800 Fax : +353-1-4198890
Italy	MITSUBISHI ELECTRIC EUROPE B.V. Italian Branch Centro Direzionale Colleoni-Palazzo Sirio Viale Colleoni 7, 20864 Agrate Brianza(Milano) Italy	Tel : +39-039-60531 Fax : +39-039-6053-312
Spain	MITSUBISHI ELECTRIC EUROPE, B.V. Spanish Branch Carretera de Rubí, 76-80-Apdo. 420, 08190 Sant Cugat del Vallés (Barcelona), Spain	Tel : +34-935-65-3131 Fax : +34-935-89-1579
France	MITSUBISHI ELECTRIC EUROPE B.V. French Branch 25, Boulevard des Bouvets, 92741 Nanterre Cedex, France	Tel : +33-1-55-68-55-68 Fax : +33-1-55-68-57-57
Czech Republic	MITSUBISHI ELECTRIC EUROPE B.V. Czech Branch Avenir Business Park, Radlicka 751/113e, 158 00 Praha5, Czech Republic	Tel : +420-251-551-470 Fax : +420-251-551-471
Poland	MITSUBISHI ELECTRIC EUROPE B.V. Polish Branch ul. Krakowska 50, 32-083 Balice, Poland	Tel : +48-12-347-65-00 Fax : +48-12-630-47-01
Sweden	MITSUBISHI ELECTRIC EUROPE B.V. (Scandinavia) Fjellievägen 8, SE-22736 Lund, Sweden	Tel : +46-8-625-10-00 Fax : +46-46-39-70-18
Russia	MITSUBISHI ELECTRIC (RUSSIA) LLC St. Petersburg Branch Piskarevsky pr. 2, bld 2, lit "Sch", BC "Benuea", office 720; 195027 St. Petersburg, Russia	Tel : +7-812-633-3497 Fax : +7-812-633-3499
Turkey	MITSUBISHI ELECTRIC TURKEY A.Ş Ümraniye Branch Serifali Mah. Kale Sok. No:41 34775 Umraniye - Istanbul, Turkey	Tel : +90-216-969-2500 Fax : +90-216-526-3995
UAE	MITSUBISHI ELECTRIC EUROPE B.V. Dubai Branch Dubai Silicon Oasis, P.O.BOX 341241, Dubai, U.A.E.	Tel : +971-4-3724716 Fax : +971-4-3724721
South Africa	ADROIT TECHNOLOGIES 20 Waterford Office Park, 189 Witkoppen Road, Fourways, South Africa	Tel : +27-11-658-8100 Fax : +27-11-658-8101
China	MITSUBISHI ELECTRIC AUTOMATION (CHINA) LTD. No.1386 Hongqiao Road, Mitsubishi Electric Automation Center, Shanghai, China	Tel : +86-21-2322-3030 Fax : +86-21-2322-3000
Taiwan	SETSUYO ENTERPRISE CO., LTD. 6F, No.105, Wugong 3rd Road, Wugu District, New Taipei City 24889, Taiwan	Tel : +886-2-2299-2499 Fax : +886-2-2299-2509
Korea	MITSUBISHI ELECTRIC AUTOMATION KOREA CO., LTD. 7F-9F, Gangseo Hangang Xi-tower A, 401, Yangcheon-ro, Gangseo-Gu, Seoul 07528, Korea	Tel : +82-2-3660-9530 Fax : +82-2-3664-8372
Singapore	MITSUBISHI ELECTRIC ASIA PTE. LTD. 307, Alexandra Road, Mitsubishi Electric Building, Singapore 159943	Tel : +65-6473-2308 Fax : +65-6476-7439
Thailand	MITSUBISHI ELECTRIC FACTORY AUTOMATION (THAILAND) CO., LTD. 12th Floor, SV.City Building, Office Tower 1, No. 896/19 and 20 Rama 3 Road, Kwaeng Bangpongpan, Khet Yannawa, Bangkok 10120, Thailand	Tel : +66-2682-6522 Fax : +66-2682-6020
Vietnam	MITSUBISHI ELECTRIC VIETNAM COMPANY LIMITED Hanoi Branch 6th Floor, Detech Tower, 8 Ton That Thuyet Street, My Dinh 2 Ward, Nam Tu Liem District, Hanoi, Vietnam	Tel : +84-4-3937-8075 Fax : +84-4-3937-8076
Malaysia	MITSUBISHI ELECTRIC SALES MALAYSIA SDN. BHD. Lot 11, Jalan 219, 46100 Petaling Jaya, Selangor Darul Ehsan, Malaysia	Tel : +60-3-7626-5000 Fax : +60-3-7658-3544
Indonesia	PT. MITSUBISHI ELECTRIC INDONESIA Gedung Jaya 11th Floor, JL. MH. Thamrin No.12, Jakarta Pusat 10340, Indonesia	Tel : +62-21-3192-6461 Fax : +62-21-3192-3942
India	MITSUBISHI ELECTRIC INDIA PVT. LTD. Pune Branch Emerald House, EL-3, J Block, M.I.D.C., Bhosari, Pune-411026, Maharashtra, India	Tel : +91-20-2710-2000 Fax : +91-20-2710-2100
Australia	MITSUBISHI ELECTRIC AUSTRALIA PTY. LTD. 348 Victoria Road, P.O. Box 11, Rydalmere, N.S.W 2116, Australia	Tel : +61-2-9684-7777 Fax : +61-2-9684-7245

MITSUBISHI ELECTRIC CORPORATION

HEAD OFFICE: TOKYO BUILDING, 2-7-3, MARUNOUCHI, CHIYODA-KU, TOKYO 100-8310, JAPAN
NAGOYA WORKS: 1-14, YADA-MINAMI 5, HIGASHI-KU, NAGOYA, JAPAN