



Programmable Controller
MELSEC iQ-F

- Side A JAPANESE
- Side B ENGLISH
- Side C CHINESE

MELSEC iQ-F FX5-485ADP

Hardware Manual



Manual Number	JY997D53801
Revision	J
Date	April 2022

This manual describes the part names, dimensions, installation, and specifications of the product. Before use, read this manual and manuals of relevant products fully to acquire proficiency in handling and operating the product. Make sure to learn all the product information, safety information, and precautions.

And, store this manual in a safe place so that you can take it out and read it whenever necessary. Always forward it to the end user.

Registration:
The company names, system names and product names mentioned in this manual are either registered trademarks or trademarks of their respective companies. In some cases, trademark symbols such as "™" or "®" are not specified in this manual.

Effective April 2022

Specifications are subject to change without notice.

© 2014 MITSUBISHI ELECTRIC CORPORATION

Safety Precautions (Read these precautions before use.)

This manual classifies the safety precautions into two categories:

WARNING and **CAUTION**

WARNING	Indicates that incorrect handling may cause hazardous conditions, resulting in death or severe injury.
CAUTION	Indicates that incorrect handling may cause hazardous conditions, resulting in minor or moderate injury or property damage.

Depending on the circumstances, procedures indicated by **CAUTION** may also cause severe injury. It is important to follow all precautions for personal safety.

Associated Manuals

Manual name	Manual No.	Description
MELSEC iQ-F FX5S/ FX5UJ/FX5U/FX5UC User's Manual (Hardware)	SH-082452ENG	Describes the details of hardware of the CPU module, including performance specifications, wiring, installation, and maintenance.
MELSEC iQ-F FX5 User's Manual (Serial Communication)	JY997D55901	Explains N:N network, parallel link, MELSEC Communication protocol, inverter communication, non-protocol communication, and predefined protocol support.
MELSEC iQ-F FX5 User's Manual (MODBUS Communication)	JY997D56101	Explains the MODBUS serial communication network.

For wiring with communication equipment, system configuration, communication settings, and program examples, refer to the following manuals.

- MELSEC iQ-F FX5 User's Manual (Serial Communication)
- MELSEC iQ-F FX5 User's Manual (MODBUS Communication)

How to obtain manuals

For the necessary product manuals or documents, consult with your local Mitsubishi Electric representative.

Applicable standards

FX5-485ADP complies with the EC Directive (EMC Directive), UL standards (UL, cUL) and UKCA marking. Further information can be found in the following manual.

→ MELSEC iQ-F FX5S/FX5UJ/FX5U/FX5UC User's Manual (Hardware)

Regarding the standards that relate to the CPU module, please refer to either the product catalog or consult with your nearest Mitsubishi product provider.

Attention

This product is designed for use in industrial applications.

1. Outline

The FX5-485ADP communication adapter is an expansion adapter for RS-485 communication with a terminal block (European type). FX5-485ADP is an insulated signal exchange unit of RS-485 serial data communication between the PLC and RS-485 device.

1.1 Incorporated Items

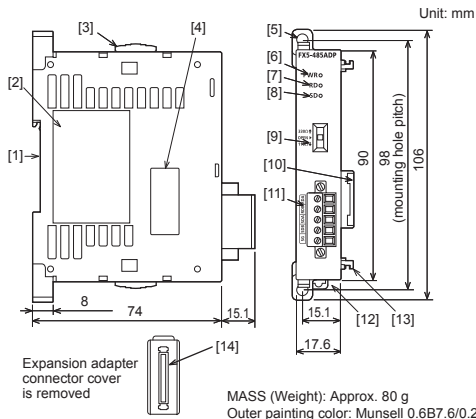
Check that the following product and items are included in the package:

Product	FX5-485ADP communication adapter
Included Items	Hardware manual (This manual)

1.2 Communication Function

MELSOFT connection, MELSEC Communication protocol (1C/3C/4C frames), Non-protocol communication, MODBUS RTU, Inverter communication, N:N network, Parallel link, Predefined protocol support

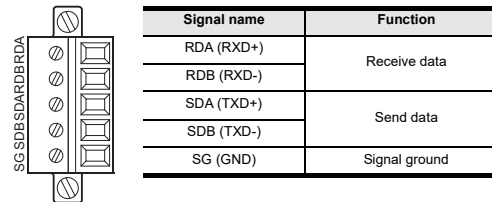
1.3 External Dimensions and Part Names



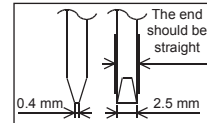
- | | |
|--|---|
| [1] DIN rail mounting groove
(DIN rail: DIN46277, 35 mm wide) | [8] SD LED (green)
Lighting while sending data |
| [2] Name plate | [9] Terminal resistor selector switch
(110 Ω/OPEN/330 Ω) |
| [3] Expansion adapter slide lock | [10] Expansion adapter connector |
| [4] Expansion adapter connector cover | [11] RS-485 communication terminal block
(European terminal block) |
| [5] Direct mounting hole:
2 holes of φ4.5
(mounting screw: M4 screw) | [12] DIN rail mounting hook |
| [6] PWR LED (green) | [13] Expansion adapter fixing hook |
| [7] RD LED (green) | [14] Expansion adapter connector |

Use a tool such as a screwdriver to operate the terminal resistor selector switch. Make sure that the edge of the tool does not damage the switch or the case.

1.4 Terminal Configuration



Recommended screwdriver to tighten terminal screws



2. Installation

INSTALLATION PRECAUTIONS **WARNING**

- Make sure to cut off all phases of the power supply externally before attempting installation or wiring work. Failure to do so may cause electric shock or damage to the product.
- Use the product within the generic environment specifications described in the User's Manual (Hardware) of the CPU module used. Never use the product in areas with excessive dust, oily smoke, conductive dusts, corrosive gas (salt air, Cl₂, H₂S, SO₂ or NO₂), flammable gas, vibration or impacts, or expose it to high temperature, condensation, or rain and wind. If the product is used in such conditions, electric shock, fire, malfunctions, deterioration or damage may occur.

INSTALLATION PRECAUTIONS **CAUTION**

- Do not touch the conductive parts of the product directly. Doing so may cause device failures or malfunctions.
- When drilling screw holes or wiring, make sure that cutting and wiring debris do not enter the ventilation slits of the PLC.
- Failure to do so may cause fire, equipment failures or malfunctions.
- Install the product on a flat surface. If the mounting surface is rough, undue force will be applied to the PC board, thereby causing nonconformities.
- Install the product securely using a DIN rail or mounting screws.
- Connect the expansion board and expansion adapter securely to their designated connectors. Loose connections may cause malfunctions.

For the installation, refer to the following manual.
→ MELSEC iQ-F FX5S/FX5UJ/FX5U/FX5UC User's Manual (Hardware)

3. Specification

STARTUP AND MAINTENANCE PRECAUTIONS **CAUTION**

- Do not disassemble or modify the PLC.
- Doing so may cause fire, equipment failures, or malfunctions.
- For repair, contact your local Mitsubishi Electric representative.
- Do not drop the product or exert strong impact to it. Doing so may cause damage.

DISPOSAL PRECAUTIONS **CAUTION**

- Please contact a certified electronic waste disposal company for the environmentally safe recycling and disposal of your device.

TRANSPORTATION PRECAUTIONS **CAUTION**

- The product is a precision instrument. During transportation, avoid impacts larger than those specified in the general specifications by using dedicated packaging boxes and shock-absorbing pallets.
- Failure to do so may cause failures in the product. After transportation, verify operation of the product and check for damage of the mounting part, etc.

3.1 Applicable CPU module

Model name	Applicability
FX5S CPU module	From first production
FX5UJ CPU module	From first production
FX5U CPU module	From first production
FX5UC CPU module	From first production

For details on the system configuration, refer to the following manuals.
→ MELSEC iQ-F FX5 User's Manual (Serial Communication)
→ MELSEC iQ-F FX5 User's Manual (MODBUS Communication)

3.2 General Specifications

The items other than the following are equivalent to those of the CPU module. For general specifications, refer to the following manual.
→ MELSEC iQ-F FX5S/FX5UJ/FX5U/FX5UC User's Manual (Hardware)

Item	Specification	
Dielectric withstand voltage	500 V AC for one minute	Between all external terminals and ground terminal of CPU module
Insulation resistance	10 MΩ or higher by 500 V DC insulation resistance tester	

3.3 Power Supply Specification

Item	Specification	
Rated voltage ^{*1}	5 V DC 24 V DC	
Current consumption ^{*1}	20 mA / 5 V DC 30 mA / 24 V DC	

^{*1} Power is supplied internally from the CPU module.

3.4 Performance Specification

Item	Specification
Transmission standard	Conforming to RS-485/RS-422
Maximum transmission distance ^{*1}	1200 m
Connection method	European terminal block
Terminal resistor	Built-in (OPEN/110 Ω/330 Ω)
Insulation	Photo-coupler isolation (Between communication line and CPU module)
Communication method ^{*2}	Half-duplex/Full-duplex
Baud rate ^{*2}	300/600/1200/2400/4800/9600/19200/38400 57600/115200 (bps)

^{*1} Total extension distance

This manual confers no industrial property rights or any rights of any other kind, nor does it confer any patent licenses. Mitsubishi Electric Corporation cannot be held responsible for any problems involving industrial property rights which may occur as a result of using the contents noted in this manual.

Warranty

Exclusion of loss in opportunity and secondary loss from warranty liability. Regardless of the gratis warranty term, Mitsubishi Electric Corporation cannot be held responsible for any problems involving industrial property rights which may occur as a result of using the contents noted in this manual.

(1) Damages caused by any cause found not to be the responsibility of Mitsubishi.
(2) Loss in opportunity, lost profits incurred to the user by Failures of Mitsubishi products.
(3) Special damages and secondary damages whether foreseeable or not, compensation for accidents, and compensation for damages to products other than Mitsubishi products.
(4) Replacement by the user, maintenance of on-site equipment, start-up test run and other tasks.

For safe use

- This product has been manufactured as a general-purpose part for general industries, and has not been designed or manufactured to be incorporated in a device or system used in purposes related to human life.
- Before using the product for special purposes such as nuclear power, electric power, aerospace, medicine or passenger movement vehicles, consult with Mitsubishi Electric.
- This product has been manufactured under strict quality control. However when installing the product where major accidents or losses could occur if the product fails, install appropriate backup or failsafe functions in the system.