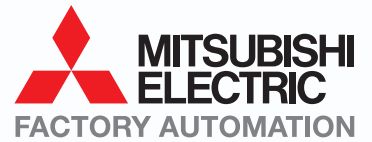


Partner Product

EBG 224-EN



MAPS

Mitsubishi Adroit Process Suite

Reducing your engineering effort and cost

Saving up to 50 %



Fully integrated SCADA, PLC solution



Integrated document management solution

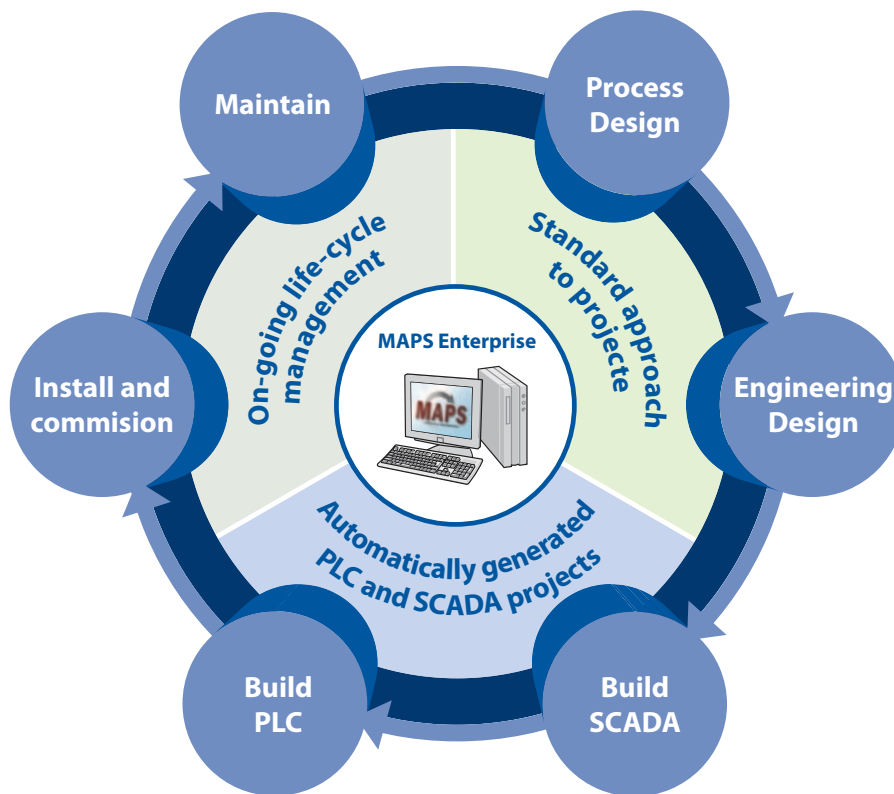


Integrated diagnostics and maintenance tools



Pre-configure and tested engineering libraries

A revolution in Automation Engineering



MAPS Life-cycle engineering



e-F@ctory Partners

Mitsubishi Electric and e-F@ctory partner Adroit Technologies have addressed the shortcomings of traditional PLC-SCADA integration tools with Mitsubishi Adroit Process Suite (MAPS).

The Product

The Mitsubishi Adroit Process Suite (MAPS) is a life-cycle software tool that offers value along the entire value chain. It addresses the shortcomings of most PLC SCADA integration tools in that it offers value to the engineering and integration phases. It also extends the integrity of the "as delivered" solution and offers customers the ability to handle the normal extensions and maintenance of any automation solution.

This single integrated package takes users through all the phases of process design, engineering design, control system design, installation, commissioning, acceptance testing and ongoing maintenance; helping to maintain consistency and integrity within an automation system, improving quality and reducing costs.

Standards

In process applications where Mitsubishi Electric PLCs are mixed with SCADA solutions from South African market leader Adroit Technologies, MAPS provides a structured approach to life-cycle engineering. It provides a standards-based approach that reduces the time and effort in automation project development, testing and commissioning phases, with pre-defined and user configurable PLC function blocks and associated SCADA graphics, based on the international S88 and S95 standards.

Single point of configuration

The MAPS solution provides a structured single point of configuration, deployment and management. Using the MAPS Enterprise Manager allows for bulk engineering and reduced effort through import functions which enable the rapid configuration of the engineering development, SCADA and PLC project, as well as ongoing life-cycle management of the automation solution.

Wizard approach

MAPS provides a wizard approach which can automatically generate PLC and SCADA projects, significantly reducing the time spent on development and configuration. It also ensures a standardised and structured design which eases on-going maintenance of the plant throughout its life-cycle.

Reporting

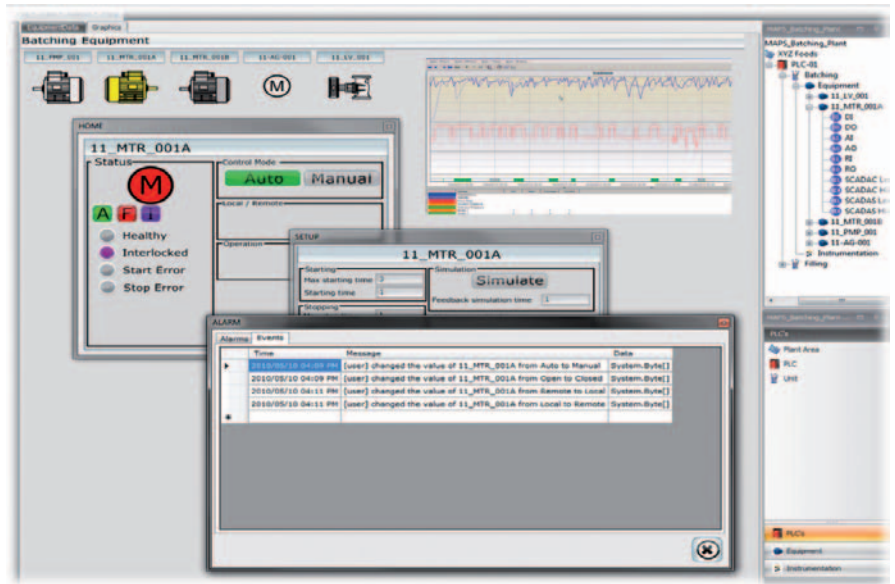
Another major shortfall of traditional integration tools is the generation of reports. With MAPS, reports covering areas such as I/O schedules, PLC and SCADA tag configuration can be automatically generated. This automatic report generation ensures that the project on handover also reflects the "as built" up-to-date electrical and instrumentation drawings that are aligned to the SCADA tags and PLC I/O. The reports are database driven, so even through on-going maintenance the reports will always reflect the current status of the electrical and instrumentation configuration.

Documentation

MAPS also helps to ensure that project documentation is kept up to date. Throughout the design phases and even as systems are upgraded or modified over time, MAPS provides on-going management of the PLC/SCADA and the plant "as built" electrical and instrumentation documentation. Whether tags are changed in the design, PLC, SCADA or the MAPS management environment, the project ensures that databases and documentation are synchronised. MAPS also offers the ability to centrally back up projects.



Mitsubishi Q Series PLC



MAPS Wizard screen

Benefits

■ Standards approach to projects

Pre-defined and user configurable PLC Functionblocks and associated SCADA graphics together with a project structure according to S88/S95 standards reduce engineering time and effort significantly.

■ Single point of configuration, deployment and management

The MAPS solution is a structured single point of configuration. Using the MAPS Enterprise Manager, allows for bulk engineering and reduced effort which enables rapid configuration of your engineering design, SCADA and PLC project and on-going life-cycle management of the automation solution.

■ Automatically generated PLC and SCADA projects to reduce engineering effort

Cost reductions of between 25% and 50% can be achieved when using the wizard approach to projects inside MAPS, allowing the user to benefit from the reduced time spent on development and configuration.

■ Automatically generated reports

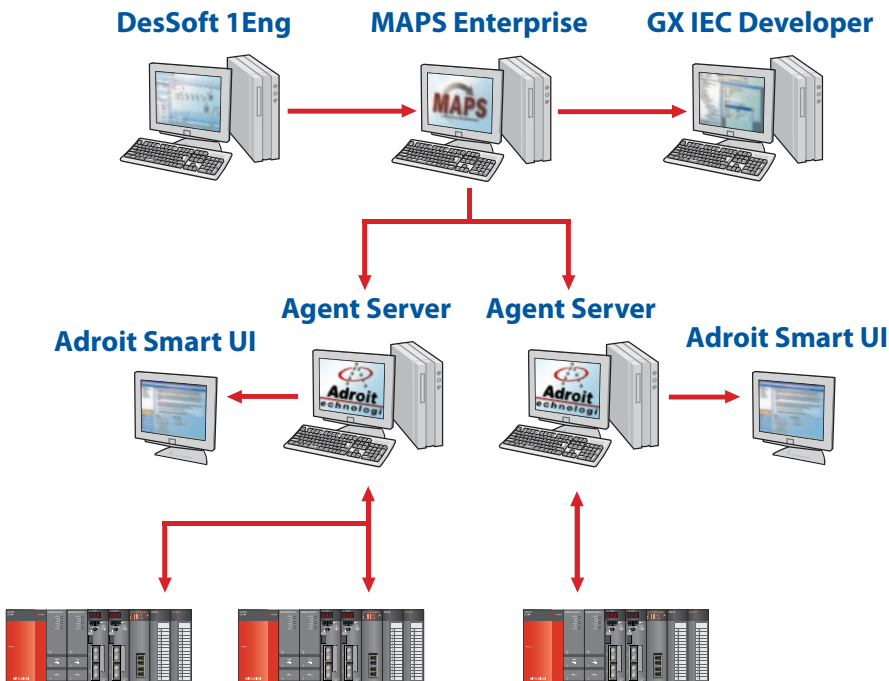
In MAPS reports can be created, covering I/O schedules, PLC and SCADA tag configuration. As these reports are generated from a database that is constantly updated, reports always show the current status of the configuration. That ensures that the project on handover reflects the as-built up to date configuration of the automation project.

■ On-going life cycle management

The MAPS solution offers customers the capability of on-going management of their PLC/SCADA projects and the plant's as-built electrical documentation. Whether tags are changed in the design, PLC, SCADA or the MAPS management environment, the project ensures that databases and documentation are synchronised.

Configuration ///

MAPS Product Architecture



Typical production line architecture with intelligent automation

EUROPEAN BRANCHES

MITSUBISHI ELECTRIC EUROPE B.V. Gothaer Straße 8 D-40880 Ratingen Phone: +49 (0)2102 / 486-0	GERMANY
MITSUBISHI ELECTRIC EUROPE B.V.-org.sl. CZECH REP. Radlická 714/113a CZ-158 00 Praha 5 Phone: +420 - 251 551 470	CZECH REP.
MITSUBISHI ELECTRIC EUROPE B.V. 25, Boulevard des Bouvets F-92741 Nanterre Cedex Phone: +33 (0)1 / 55 68 55 68	FRANCE
MITSUBISHI ELECTRIC EUROPE B.V. Viale Colleoni 7 I-20041 Agrate Brianza (MB) Phone: +39 039 / 60 53 1	ITALY
MITSUBISHI ELECTRIC EUROPE B.V. Krapowska 50 PL-32-083 Balice Phone: +48 (0)12 / 630 47 00	POLAND
MITSUBISHI ELECTRIC EUROPE B.V. 52, bld. 3 Kosmodamijskaya nab 8 floor RU-115054 Moscow Phone: +7 495 721-2070	RUSSIA
MITSUBISHI ELECTRIC EUROPE B.V. Carretera de Rubi 76-80 E-08190 Sant Cugat del Vallés (Barcelona) Phone: 902 131121 // +34 935653131	SPAIN
MITSUBISHI ELECTRIC EUROPE B.V. Travellers Lane UK-Hatfield, Herts. AL10 8XB Phone: +44 (0)1707 / 27 61 00	UK

EUROPEAN REPRESENTATIVES

GEVA Wiener Straße 89 AT-2500 Baden Phone: +43 (0)2252 / 85 55 20	AUSTRIA	Beijer Electronics A/S Lykkegårdsvej 17 DK-4000 Roskilde Phone: +45 (0)46 / 75 76 66	DENMARK	ALFATRADE Ltd. 99, Paola Hill Malta- Paola PLA 1702 Phone: +356 (0)21 / 697 816	MALTA	Sirius Trading & Services Aleea Lacul Morii Nr. 3 RO-060841 Bucuresti, Sector 6 Phone: +40 (0)21 / 430 40 06	ROMANIA	Beijer Electronics AB Box 426 SE-20124 Malmö Phone: +46 (0)40 / 35 86 00	SWEDEN	ILAN & GAVISH Ltd. 24 Shenkar St., Kiryat Arie IL-49001 Petah-Tiqva Phone: +972 (0)3 / 922 18 24	ISRAEL
TEHNIKON Oktyabrskaya 16/5, Off. 703-711 BY-220030 Minsk Phone: +375 (0)17 / 210 46 26	BELARUS	Beijer Electronics Eesti OÜ Pärnu mnt.160i EE-11317 Tallinn Phone: +372 (0)6 / 51 81 40	ESTONIA	INTEHISIS srl bld. Traian 23/1 MD-2060 Kishinev Phone: +373 (0)22 / 66 4242	MOLDOVA	Craft Con. & Engineering d.o.o. Bulevar Svetog Cara Konstantina 80-86 SER-18106 Nis Phone: +381 (0)18 / 292-24-4/5	SERBIA	Omni Ray AG Im Schörl 5 CH-8600 Dübendorf Phone: +41 (0)44 / 802 28 80	SWITZERLAND	TEXEL ELECTRONICS Ltd. 2 Ha'umanut, P.O.B. 6272 IL-42160 Netanya Phone: +972 (0)9 / 863 39 80	ISRAEL
ESCO D & A Culliganlaan 3 BE-1831 Diegem Phone: +32 (0)2 / 717 64 30	BELGIUM	Beijer Electronics OY Peltioie 37 FIN-28400 Ulvila Phone: +358 (0)207 / 463 540	FINLAND	HIFLEX AUTOM. B.V. Wolweverstraat 22 NL-2984 CD Ridderkerk Phone: +31 (0)180 - 46 60 04	NETHERLANDS	INEA SR d.o.o. Izletnica 10 SER-113000 Smederevo Phone: +381 (0)26 / 617 163	SERBIA	GTS Bayraktar Bulvarı Nutuk Sok. No:5 TR-34775 Yukarı İSTANBUL Phone: +90 (0)216 526 39 90	TURKEY	CEG INTERNATIONAL Cebaco Center/Block A Autostrade DORA Lebanon - Beirut Phone: +961 (0)1 / 240 430	LEBANON
Koning & Hartman b.v. Woluwelaan 31 BE-1800 Vilvoorde Phone: +32 (0)33 / 921 164	BELGIUM	UTECO 5, Mavrogenous Str. GR-18542 Piraeus Phone: +30 211 / 1206 900	GREECE	Koning & Hartman b.v. Haarlerbergweg 21-23 NL-1101 CH Amsterdam Phone: +31 (0)20 / 587 76 00	NETHERLANDS	SIMAP s.r.o. Jána Derku 1671 SK-911 01 Trenčín Phone: +421 (0)32 743 04 72	SLOVAKIA	CSC Automation Ltd. 4-B, M. Raskovoyi St. UA-02660 Kiev Phone: +380 (0)44 / 494 33 55	UKRAINE	CBI Ltd. Private Bag 2016 ZA-1600 Isando Phone: +27 (0)11 / 977 0770	SOUTH AFRICA
INEA BH d.o.o. Aleja Lipa 56 BA-71000 Sarajevo Phone: +387 (0)33 / 921 164	BOSNIA AND HERZEG.	MELTRADE Kft. Fertő utca 14. HU-1107 Budapest Phone: +36 (0)1 / 431-9726	HUNGARY	Beijer Electronics AS Postboks 487 NO-3002 Drammen Phone: +47 (0)32 / 24 30 00	NORWAY	PROCONT, spol. s r.o. Prešov Küpeľná 1/A SK-080 01 Prešov Phone: +421 (0)51 7580 611	SLOVAKIA	INEA d.o.o. Stegne 11 SI-1000 Ljubljana Phone: +386 (0)1 / 513 8100	SLOVENIA		
AKHNATON 4 Andrej Ljapchev Blvd. Pb 21 BG-1756 Sofia Phone: +359 (0)2 / 817 6044	BULGARIA	100 Kazpromatomatika Ul. Zhambyla 28 KAZ-100017 Karaganda Phone: +7 7212 / 50 10 00	KAZAKHSTAN	Fonseca S.A. R. João Francisco do Casal 87/89 PT - 3801-997 Aveiro, Esigueira Phone: +351 (0)234 / 303 900	PORTUGAL						
INEA CR d.o.o. Losinjska 4 a HR-10000 Zagreb Phone: +385 (0)1/36940-01/-02/-03	CROATIA	Beijer Electronics SIA Ritausmas iela 23 LV-1058 Riga Phone: +371 (0)784 / 2280	LATVIA								
AutoCont C.S. s.r.o. Technologická 374/6 CZ-708 00 Ostrava-Pustkovec Phone: +420 595 691 150	CZECH REPUBLIC	Beijer Electronics UAB Savanoriu Pr. 187 LT-02300 Vilnius Phone: +370 (0)5 / 232 3101	LITHUANIA								



Mitsubishi Electric Europe B.V. /// FA - European Business Group /// Gothaer Straße 8 /// D-40880 Ratingen /// Germany
Tel.: +49(0)2102-4860 /// Fax: +49(0)2102-4861120 /// info@mitsubishi-automation.com /// www.mitsubishi-automation.com

Specifications subject to change /// Art. no. 242569-A /// 05.2011
All trademarks and copyrights acknowledged.