

Numerical Control (CNC)

Instruction Manual

MITSUBISHI CNC EtherNet/IP Configuration Tool

Introduction

This instruction manual describes how to use MITSUBISHI CNC EtherNet/IP Configuration Tool. Incorrect handling may lead to unforeseen accidents, so make sure to read this instruction manual thoroughly before operation to ensure correct usage.

MITSUBISHI CNC EtherNet/IP Configuration Tool supports the following NC series.

Appropriate NC
M800W/M800S/M80W/M80/E80 Series
M800VW/M800VS/M80VW/M80V Series

Notes on Reading This Manual

- (1) For the specifications of individual machine tools, refer to the manuals issued by the respective machine tool builders. The "restrictions" and "available functions" described by the machine tool builders have precedence over this manual.
- (2) This manual describes as many special operations as possible, but it should be kept in mind that operations not mentioned in this manual cannot be performed.

Precautions for Safety

Always read the specifications issued by the machine tool builder, this manual, related manuals and attached documents before installation, operation, programming, maintenance or inspection to ensure correct use. Understand this numerical controller, safety items and cautions before using the unit.

This manual ranks the safety precautions into "DANGER", "WARNING" and "CAUTION".



DANGER

When the user may be subject to imminent fatalities or major injuries if handling is mistaken.




WARNING

When the user may be subject to fatalities or major injuries if handling is mistaken.



CAUTION

When the user may be subject to injuries or when property damage may occur if handling is mistaken.

Note that even items ranked as "  CAUTION", may lead to major results depending on the situation. In any case, important information that must always be observed is described.



DANGER

Not applicable in this manual.










WARNING

Not applicable in this manual.



CAUTION

1. Items related to product and manual

-  If the descriptions relating to the "restrictions" and "allowable conditions" conflict between this manual and the machine tool builder's instruction manual, the latter has priority over the former.
-  The operations to which no reference is made in this manual should be considered impossible.
-  This manual is compiled on the assumption that your machine is provided with all optional functions. Confirm the functions available for your machine before proceeding to operation by referring to the specification issued by the machine tool builder.
-  In some NC system versions, there may be cases that different pictures appear on the screen, the machine operates in a different way on some function is not activated.
-  Check condition of the NC device to transfer NC data and machining program by MITSUBISHI CNC EtherNet/IP Configuration Tool to NC device connected to the network. It may cause unintended rewriting of the program.
-  To protect the availability, integrity and confidentiality of the NC system against cyber-attacks including unauthorized access, denial-of-service (DoS) (*1) attack, and computer virus from external sources via a network, take security measures such as firewall, VPN, and anti-virus software.
(*1) Denial-of-service (DoS) refers to a type of cyber-attack that disrupts services by overloading the system or by exploiting a vulnerability of the system.
-  Mitsubishi Electric assumes no responsibility for any problems caused to the NC system by any type of cyber-attacks including DoS attack, unauthorized access and computer virus.

Trademarks

MELDAS, MELSEC, EZSocket, EZMotion, iQ Platform, MELSOFT, GOT, CC-Link, CC-Link/LT and CC-Link IE are either trademarks or registered trademarks of Mitsubishi Electric Corporation in Japan and/or other countries.

Ethernet is a registered trademark of Xerox Corporation in the United States and/or other countries.

Microsoft® and Windows® are either trademarks or registered trademarks of Microsoft Corporation in the United States and/or other countries.

EtherNet/IP is a trademark of Open DeviceNet Vendor Association, Inc.

Other company and product names that appear in this manual are trademarks or registered trademarks of the respective companies.

Contents

1. Outline	1
2. Operating Environment of the EIP-CT	1
3. Installation	2
3.1 Requirements	2
3.2 Installation Procedure	2
3.2.1 Start setup.exe	3
3.2.2 Install Runtime	3
3.2.3 Start the EIP-CT Installation	5
3.2.4 Select the Protection Type	5
3.2.5 Input Serial Number	6
3.2.6 Specify the Destination Folder for Installation	6
3.2.7 Start Installation	7
3.2.8 Copying	8
3.2.9 Installation Completed	8
3.2.10 Start the EIP-CT	9
3.3 Uninstallation	10
4. Screen Overview	11
4.1 Screen Configuration	11
4.2 Display Items	11
5. Device Setting and Configuration File Output	12
5.1 When NC is Used with a Scanner	12
5.1.1 Configuration	12
5.1.2 Operations in the EIP-CT	13
5.2 Adapter Function	26
5.2.1 Configuration	26
5.2.2 How to Obtain the EDS File	26
5.2.3 Configuration Setting	27
6. Diagnostic Function	30
6.1 Procedures for Diagnostic Startup	30
6.2 Diagnostic Screen	32
6.2.1 Diagnostic Status Confirmation Screen	32
6.2.2 I/O Data Confirmation Screen	33

1. Outline

1. Outline

In order to use the NC EtherNet/IP function, the connected device needs to be set with the "EtherNet/IP Configuration Tool (hereafter EIP-CT)". The EIP-CT is a tool which operates on Windows.

With the EIP-CT, in addition to the setting of connected devices, diagnostic function to confirm the connecting status of connected devices is available.

This manual describes the essential information for the EIP-CT only. For details about the EIP-CT, refer to Help of the EIP-CT. (*1)

(*1) The contents that can be set with the EIP-CT depends on the NC EtherNet/IP specifications.

Also, the following functions in Help cannot be used with NC.

- The contents in "Downloading the configuration"
- The following contents in "8. Properties of the EtherNet/IP scanner"
 - The Ethernet tab
 - The EtherNet/IP tab
 - The User Data tab
- The contents in "13. Device names and items configuration"
- QoS, DNS Server, Host Name, Domain Name, DHCP, and BOOTP settings

2. Operating Environment of the EIP-CT

The EIP-CT operates in the following environment.

PC requirements	OS	Windows 10 (32bit/64bit)
	CPU	CPU clock 1GHz or faster
	Harddisk space	200MB or larger (excluding the free space necessary for running the OS)
	Memory	2GB or larger
	Display	Video adapter and monitor with SVGA resolution (800 × 600) or higher
	External interface	CD-ROM compatible disc drive · Used for installation. USB port · The license key (USB dongle) uses one USB port. (*1)
	Required software	Microsoft Visual C++ 2008 SP1 Redistributable Package · Can be installed with the EIP-CT simultaneously. Microsoft .NET Framework 2.0 SP2 · Comes with the compatible OS.
	Account	An administrator account · The EIP-CT does not start without an administrator account.
Supported languages	English Only input to the tool in English is guaranteed. Japanese and non-Latin characters are not guaranteed.	

(*1) This is required when the protection type is set to USB Dongle at installation of EIP-CT. Refer to "3.2.4 Select the Protection Type" for details.

3. Installation

3. Installation

The following describes how to install the EIP-CT.

3.1 Requirements

The following is required for installing the EIP-CT.

PC for installation	A PC that meets the requirements described in "2. Operating environment of the EIP-CT".
Installation disc	<p>The EIP-CT installation disc</p> <p>Structure</p> <pre> Drive letter:\ The drive letter varies by PC. ├ setup.exe The Installer └ EDS The EDS file storage folder └ 00A1000C00600100.eds The NC control unit EDS file (*1) </pre> <p>(*1) This EDS file is required when using the NC control module as an adapter. The EDS file is used by the configuration tool for scanner device. Refer to the instruction manual of the scanner device for how to use the EDS file.</p>
License key (USB or serial key)	Required to use the EIP-CT.

3.2 Installation Procedure

Install the EIP-CT by following the procedures below.

Procedure	Description
1	Refer to "3.2.1 Start setup.exe" to "3.2.9 Installation Completed" to run the installer.
2	Refer to "3.2.10 Start the EIP-CT" to confirm the screen after startup.

3. Installation

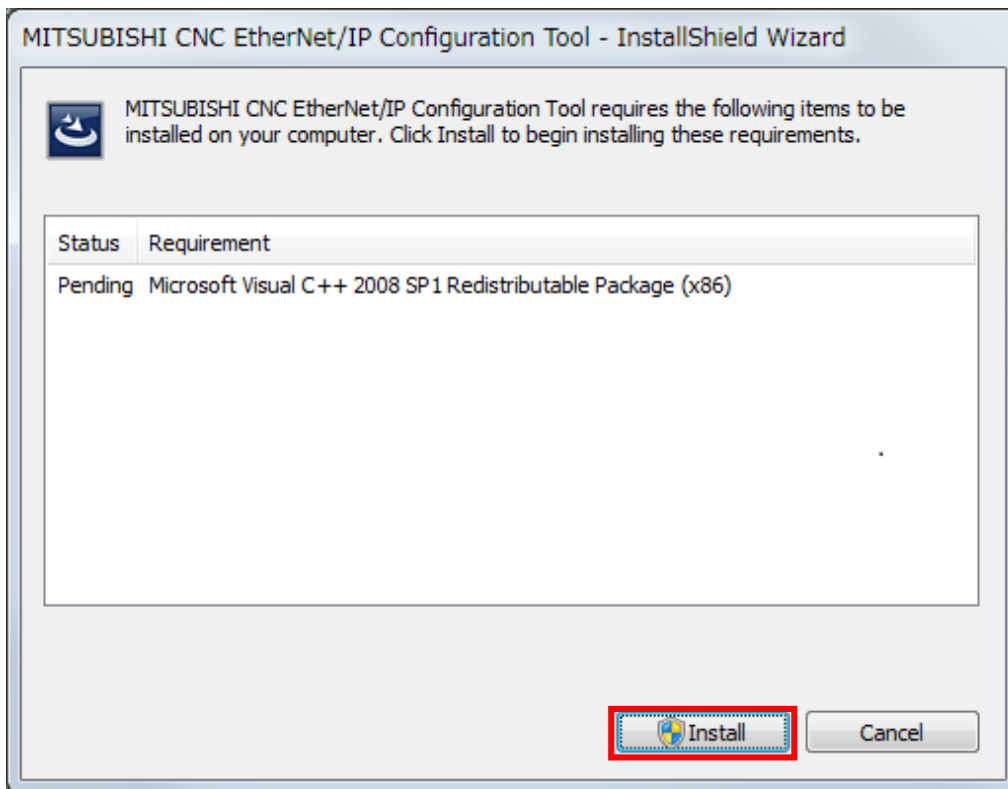
3.2.1 Start setup.exe

Execute "Drive letter:\setup.exe" from the installation disc.

3.2.2 Install Runtime

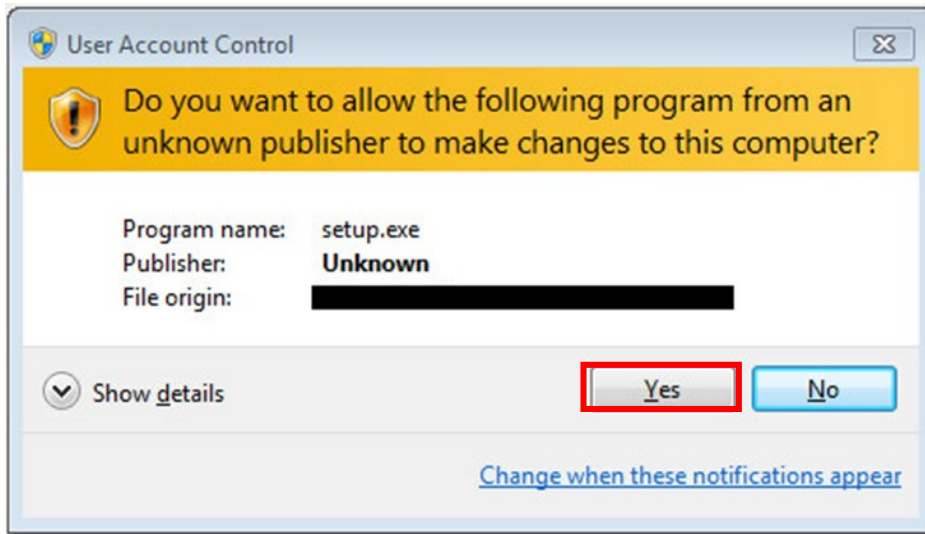
Runtime is required on the PC for installation. When Runtime is not installed, follow the procedure below to install Runtime. If Runtime is already installed, go to procedure "3.2.3 Start the EIP-CT Installation".

The following dialog appears. Click the [Install] button.

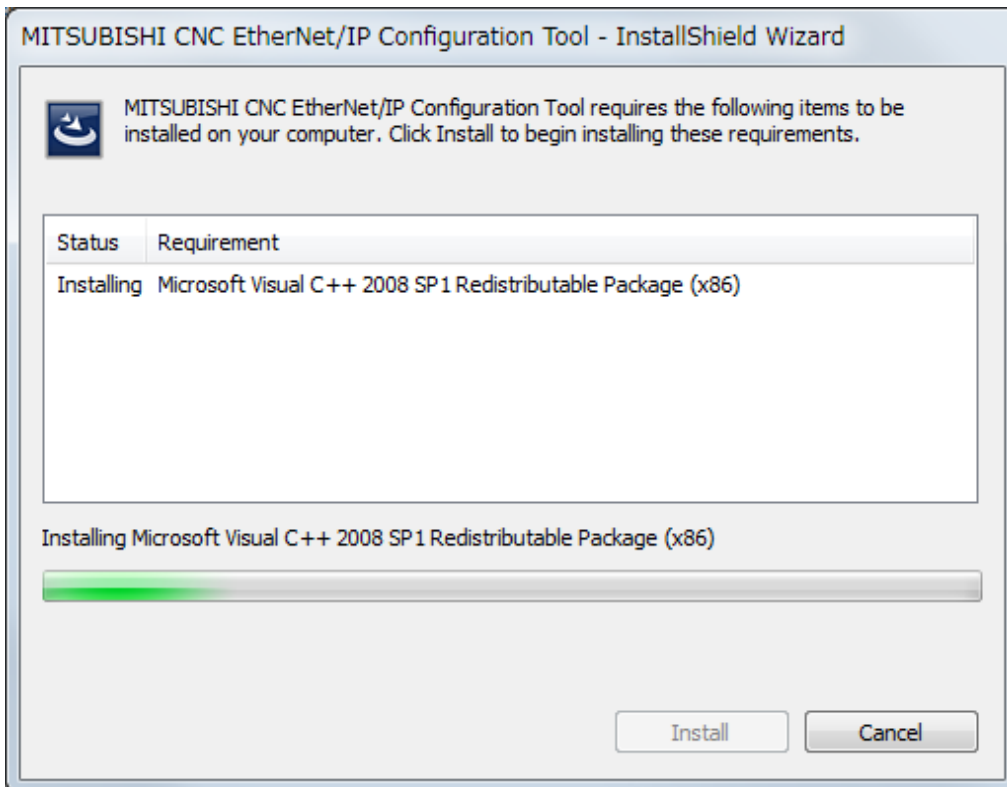


3. Installation

When the user account control function asks for permission to make changes to the computer, click the [Yes] button.



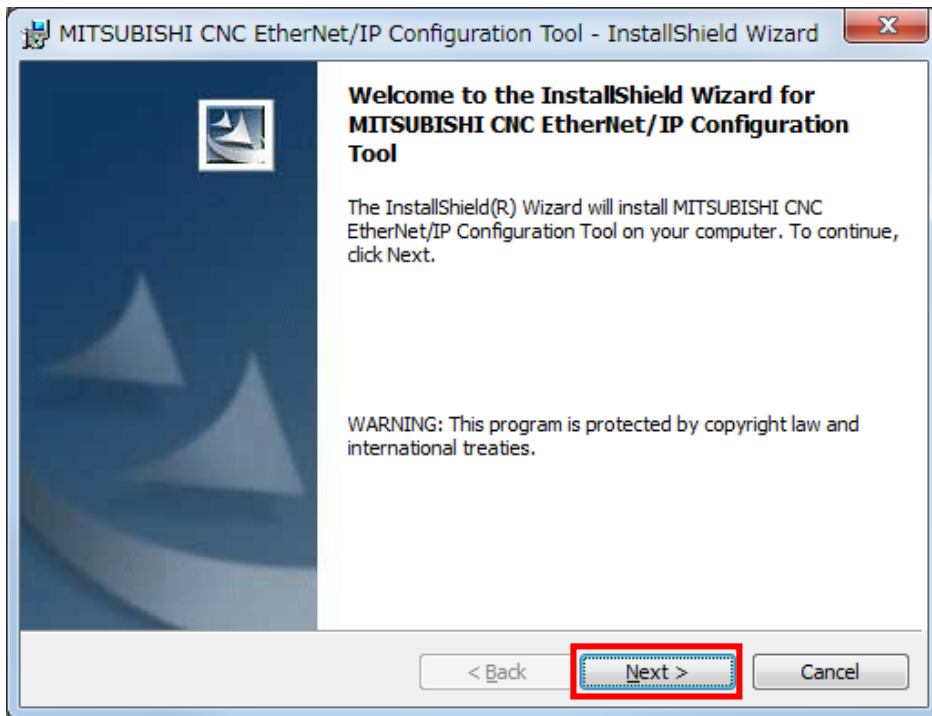
Wait until copying is completed.



3. Installation

3.2.3 Start the EIP-CT Installation

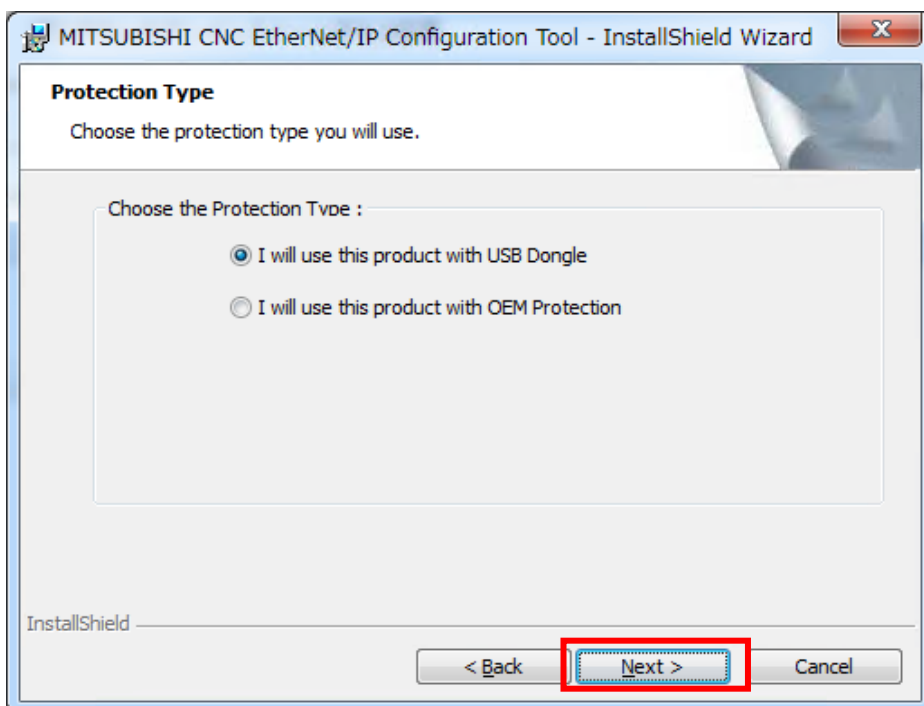
Run setup.exe to start the installer and the following dialog appears. Click the [Next>] button.



3.2.4 Select the Protection Type

Select USB Dongle or OEM Protection as the protection type.

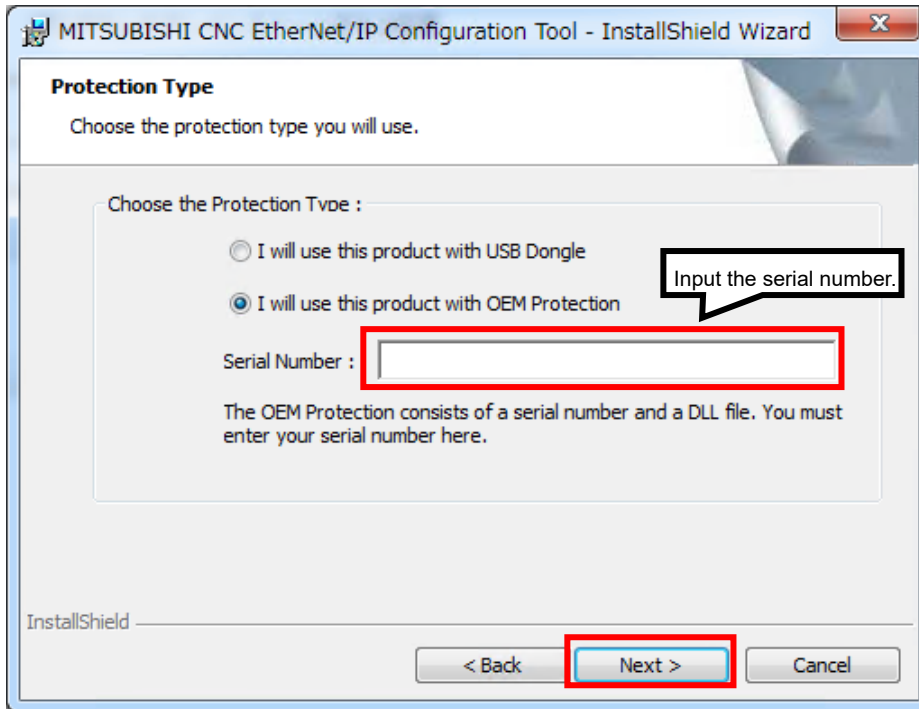
When the USB Dongle is selected, go to "3.2.6 Specify the Destination Folder for Installation".



3. Installation

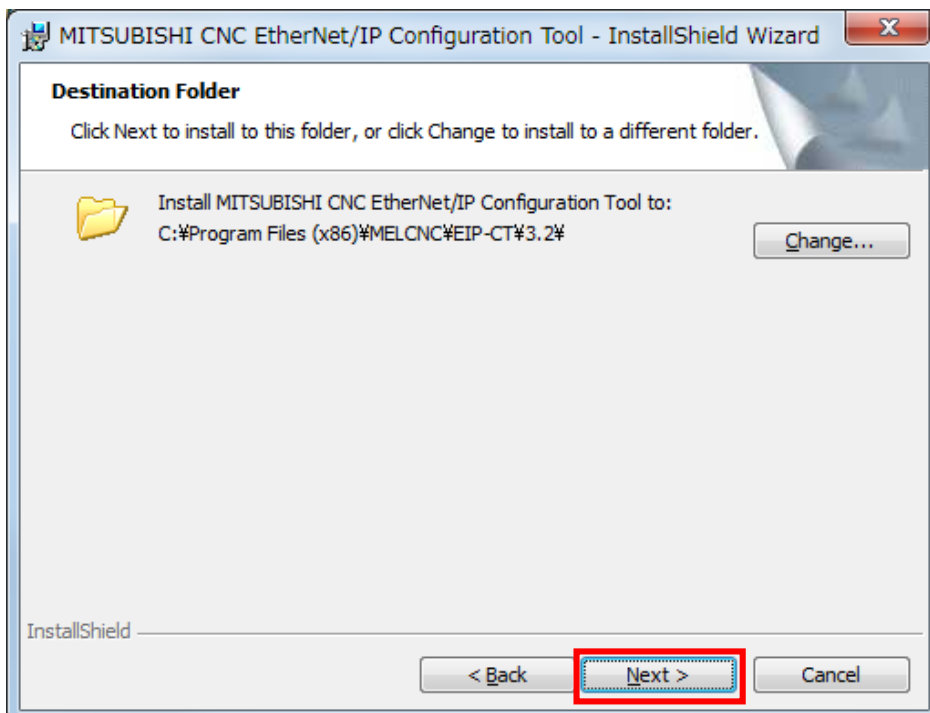
3.2.5 Input Serial Number

When the OEM Protection is selected in "3.2.4 Select the Protection Type", the serial number input field appears as shown below. Input the EIP-CT serial number in the input field, and click the [Next>] button.



3.2.6 Specify the Destination Folder for Installation

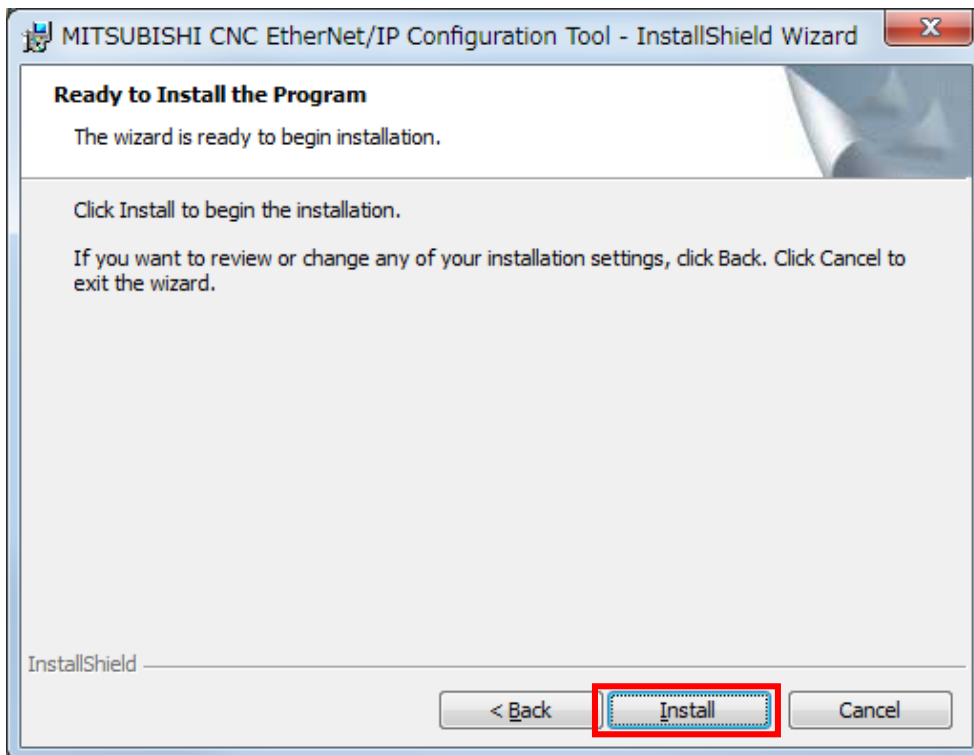
The destination folder can be specified. Specify a destination folder, or click the [Next>] button to install to the default destination.



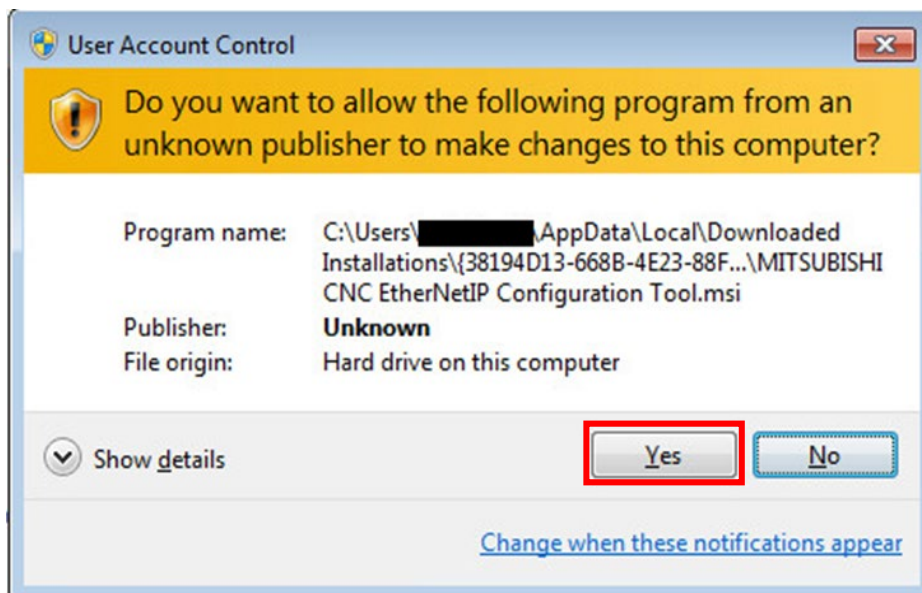
3. Installation

3.2.7 Start Installation

Click the [Install] button to start the installation process.



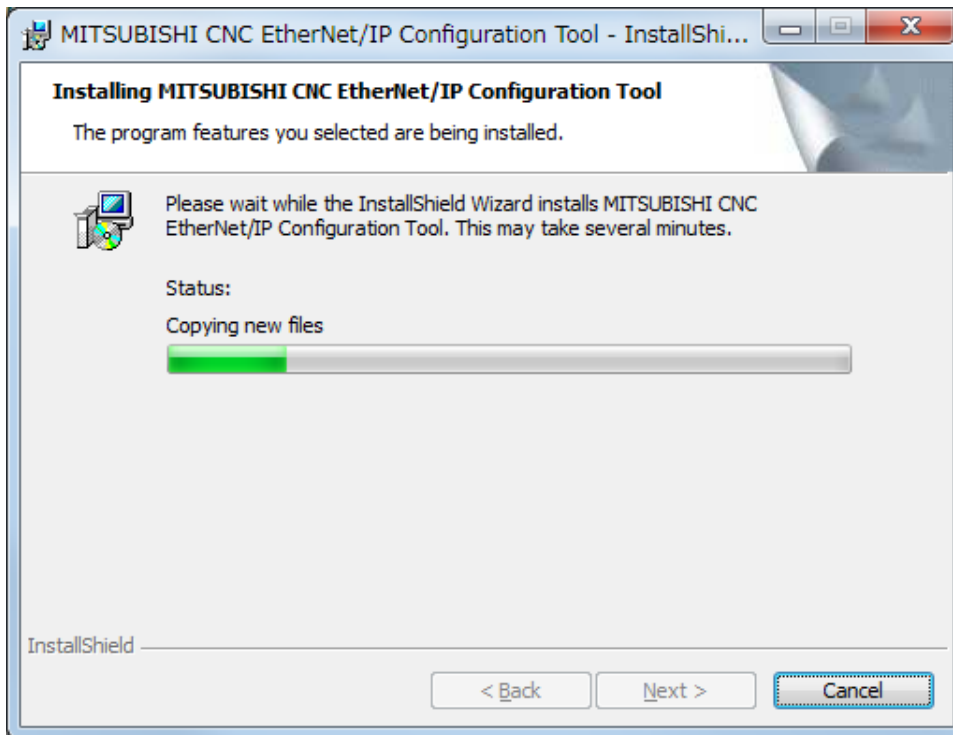
When the user account control function asks for permission to make changes to the computer, click the [Yes] button.



3. Installation

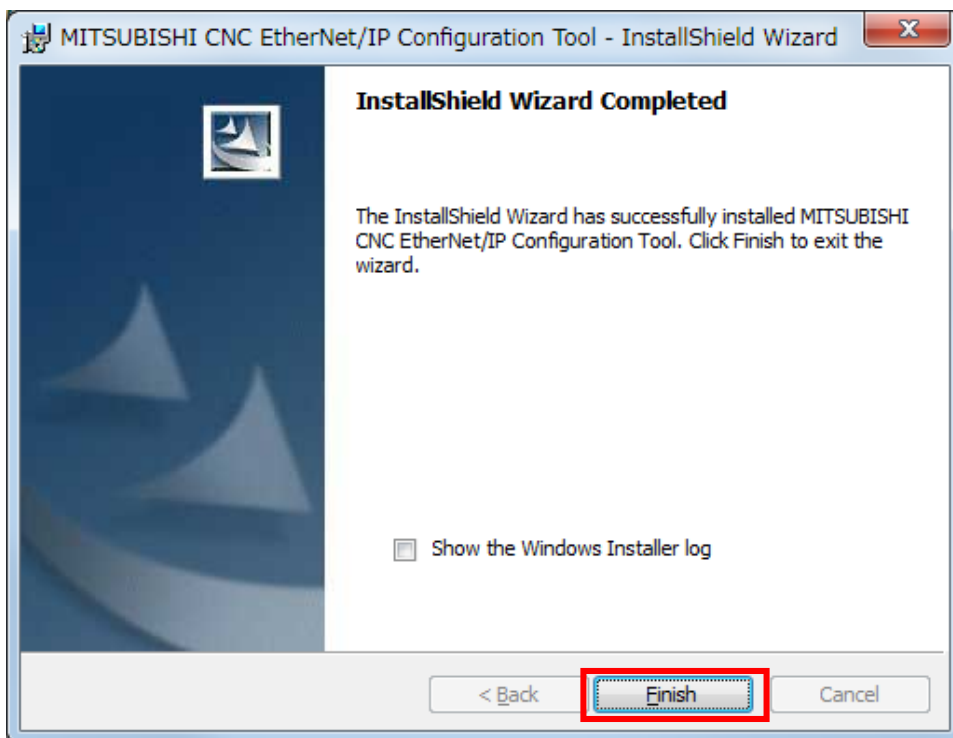
3.2.8 Copying

Wait until copying is completed.



3.2.9 Installation Completed

Click the [Finish] button.



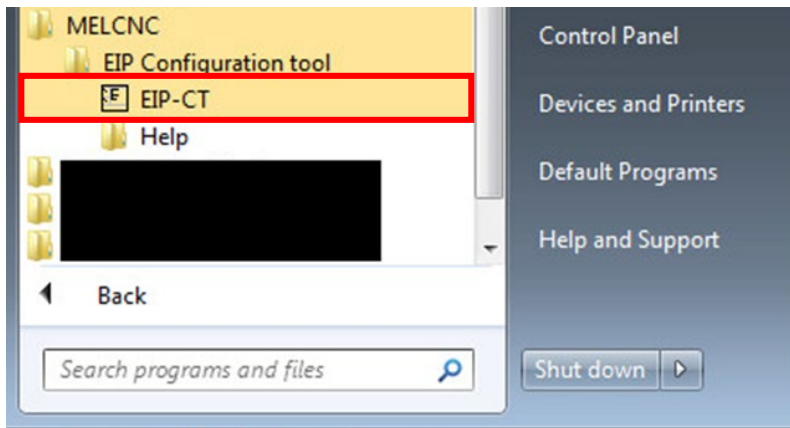
3. Installation

3.2.10 Start the EIP-CT

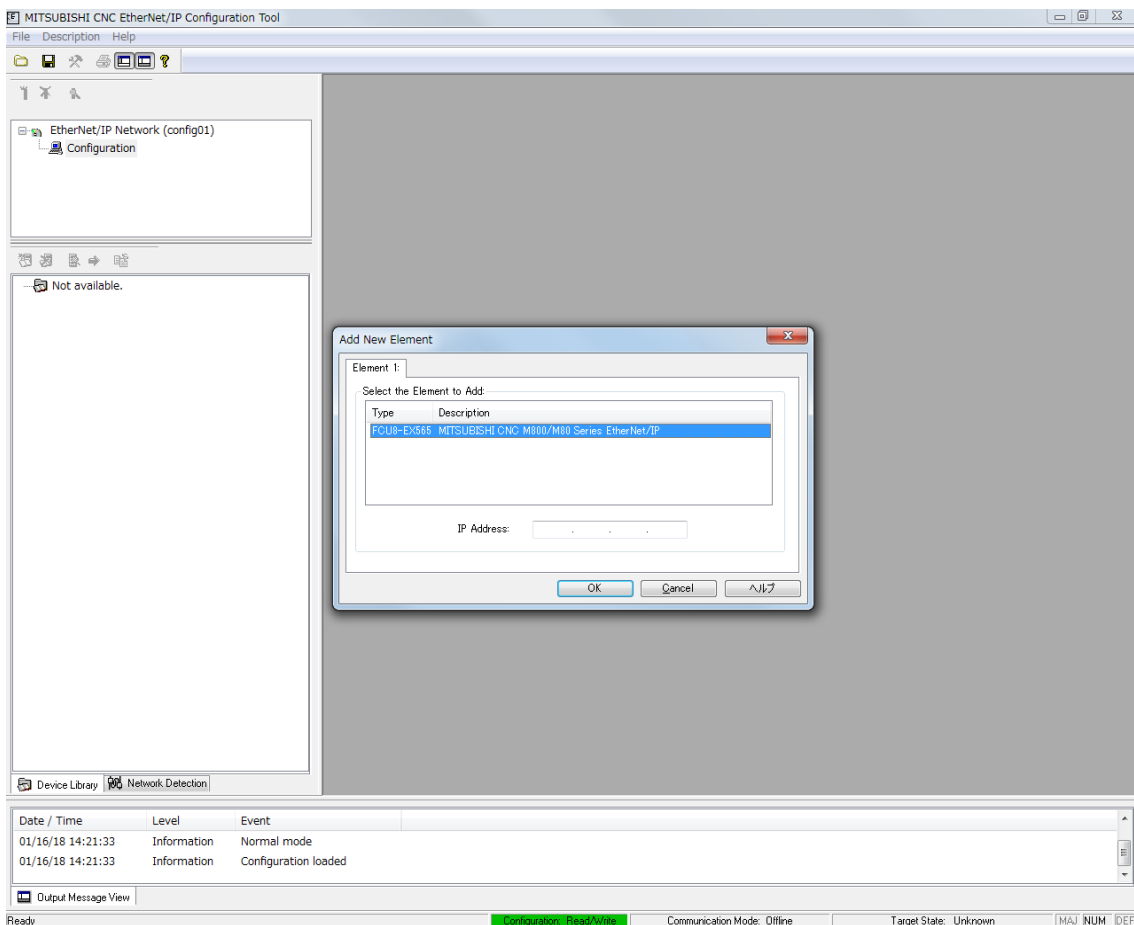
(1) When the USB Dongle is selected in "3.2.4 Select the Protection Type", insert the license key into the PC with the EIP-CT installed. When the OEM Protection is selected, go to (2).

- Be sure to insert the license key before starting the EIP-CT.
- The driver for the license key is automatically installed when the license key is inserted into the PC.

(2) [Start] – [All programs] – [MELCNC] – [EIP Configuration tool] – [EIP-CT]



(3) Start the EIP-CT, and confirm that the following screen appears. If the following screen does not appear, the installation may have failed. Install the EIP-CT again from the beginning.



3. Installation

3.3 Uninstallation

Uninstall the EIP-CT by the following procedures.

Procedure	Description
1	Log in with an administrator account.
2	Remove the license key from the PC. (*1)
3	Open the control panel with [Start] – [Control Panel], and select "Programs and function".
4	Select the software below from the list, and click the Uninstall button. "MITSUBISHI CNC EtherNet/IP Configuration Tool"
5	Only perform this procedure when required. A data file used by the EIP-CT is in the folder below. The data file is not deleted in procedure 4. Delete the data file manually as required. C:\ProgramData\MELCNC\EIP-CT\3.2

(*1) This procedure is required when the USB Dongle is selected in "3.2.4 Select the Protection Type".

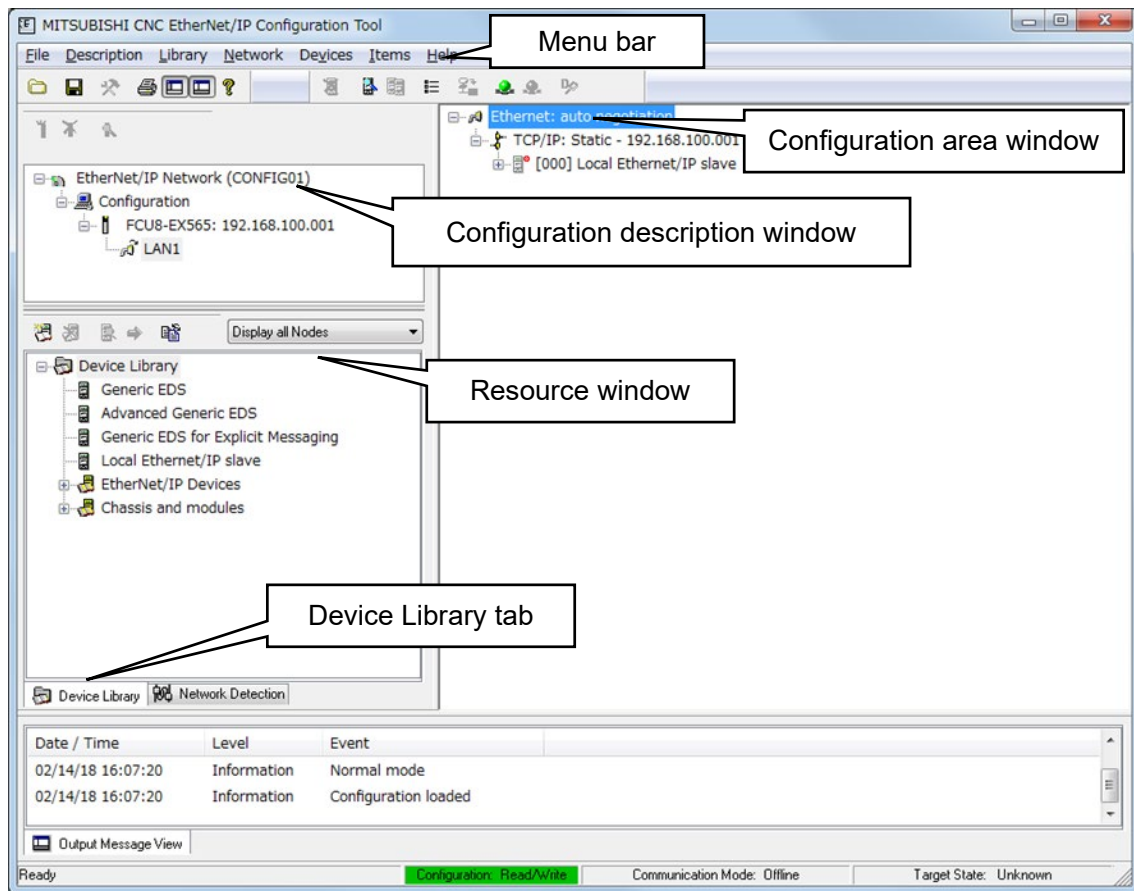
4. Screen Overview

4. Screen Overview

The startup screen of the EIP-CT is shown below. Basic operations are executed from the Menu bar, Configuration description window, Resource window, and Configuration area window. The figure below is an example of when the Device Library tab is selected in the Resource window.

Note that the following screen appears when the EIP-CT is started up for the second or subsequent time. When the EIP-CT is started up for the first time, a different screen appears.

4.1 Screen Configuration



4.2 Display Items

Item	Description
Menu bar	A bar containing all the functions available with the EIP-CT.
Configuration description window	A window where the NP IP address is set.
Resource window	A window that displays the devices that can be added to the configuration area window.
Device Library tab	A window that obtains device information from an EDS file and displays a list of it. EDS files can also be added, deleted, and rearranged.
Configuration area window	A window where the configuration and parameters of communicating devices are set. The configuration file that is output contains the configurations set in this window.

5. Device Setting and Configuration File Output

5. Device Setting and Configuration File Output

This section describes the basic operations for setting devices, and generating configuration files. The setting method for devices depends on whether an NC control unit is used with a scanner or with an adapter. A description for each case follows.

5.1 When NC is Used with a Scanner

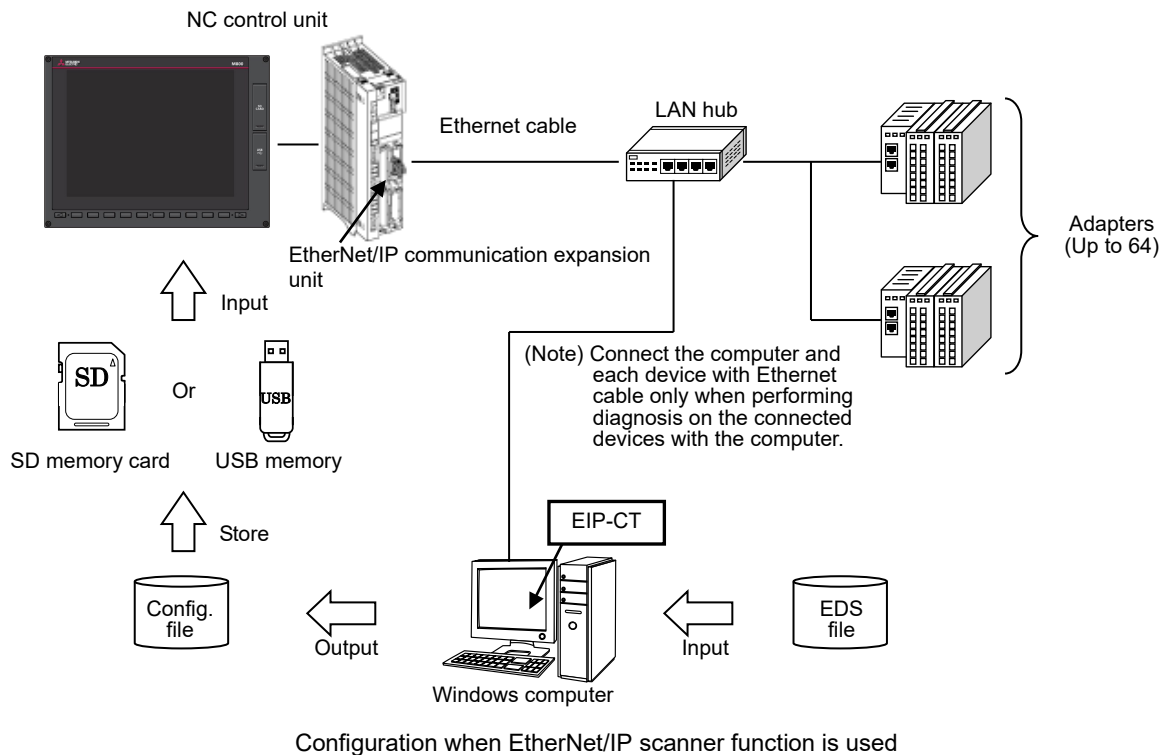
With the EtherNet/IP scanner function, the NC control unit can communicate with adapters (such as I/O units).

The scanner function and the adapter function can be used at the same time.

The following describes the operations on the EIP-CT when using the NC control unit with a scanner.

5.1.1 Configuration

Figure 5-1 gives an overview of the configuration when an NC control unit is used as a scanner.



5. Device Setting and Configuration File Output

5.1.2 Operations in the EIP-CT

In order to use EtherNet/IP, the connected device needs to be set using the EIP-CT tool on a Windows computer. The configuration file output from the EIP-CT is input to the NC control unit using the NC control unit input/output function.

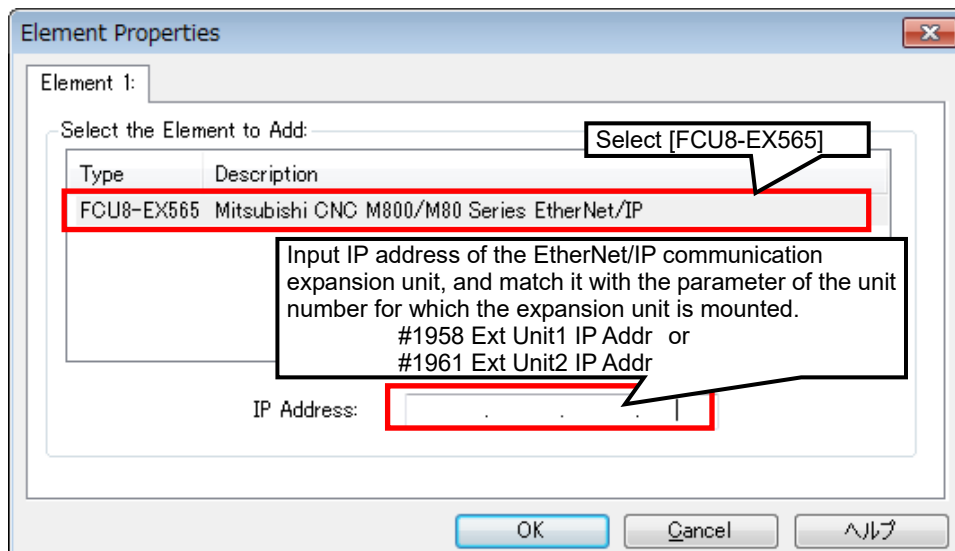
Output the configuration file by following the procedure below.

(1) Creating a new configuration by starting the EIP-CT.

This procedure is only required for the first startup of the EIP-CT (the procedure is not required when the EIP-CT is started up for the second or subsequent time).

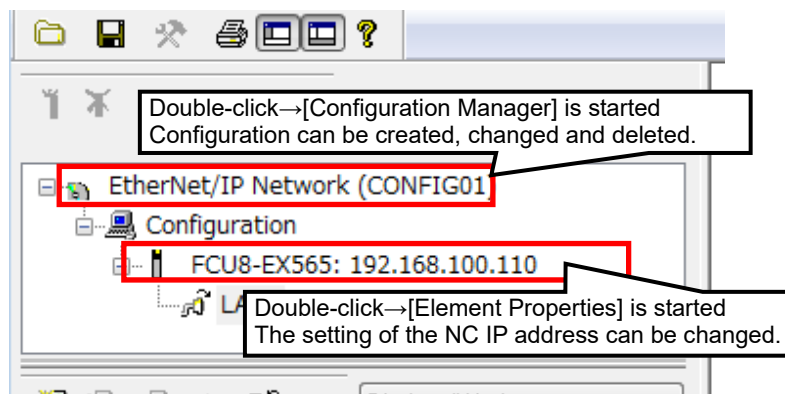
When the EIP-CT is started, the following dialog appears.

Select [FCU8-EX565], input the IP address of the EtherNet/IP communication expansion unit in [IP Address], and then select [OK].



Add new element dialog

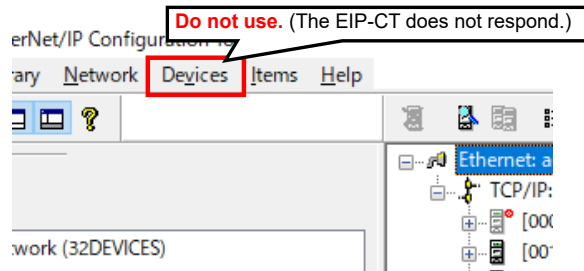
- Configuration can be created, changed, and deleted, and the IP address of an EtherNet/IP communication expansion unit can be changed on the "Configuration description window".



Configuration description window

5. Device Setting and Configuration File Output

(Note 1) Do not use the [Devices] menu right after the configuration is changed by [Configuration Manager]. When it is clicked, the EIP-CT does not respond.



(2) Register the EDS file to the EIP-CT

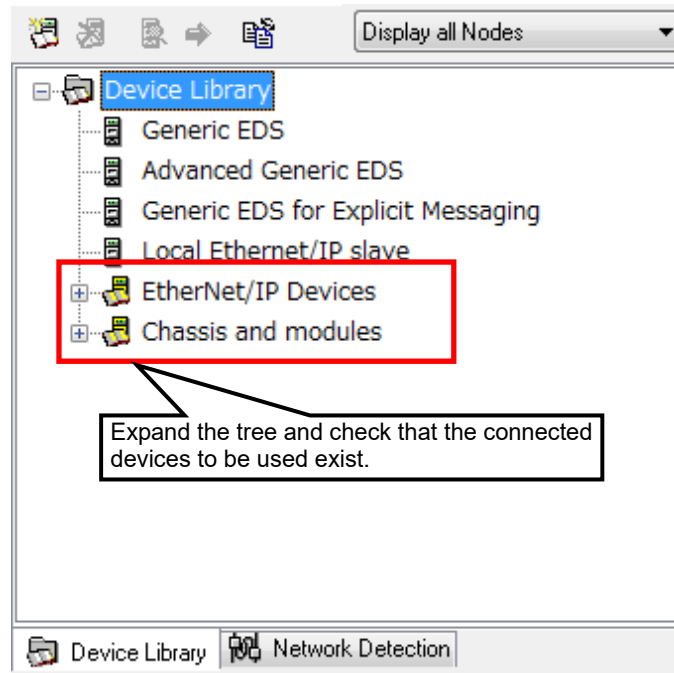
The EDS file contains the information of the EtherNet/IP connected devices.

When the EDS file is registered to the EIP-CT, the connected device information appears in the "Device Library", and the connected devices can be registered to the "Configuration area window".

Confirm if the information of connected devices exists in the "Device Library" of the EIP-CT.

The registration of the EDS file by this procedure is required only when the information of connected devices does not exist in the "Device Library" (when it exists, this procedure is not required.)

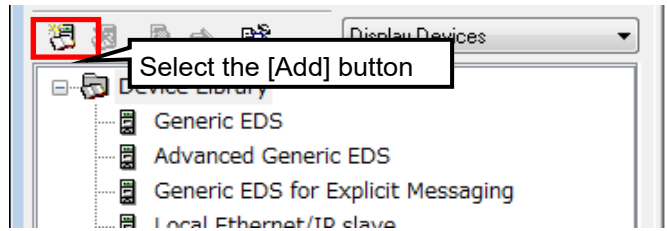
Obtain the EDS file of the adapters to be connected from the device manufacturer.



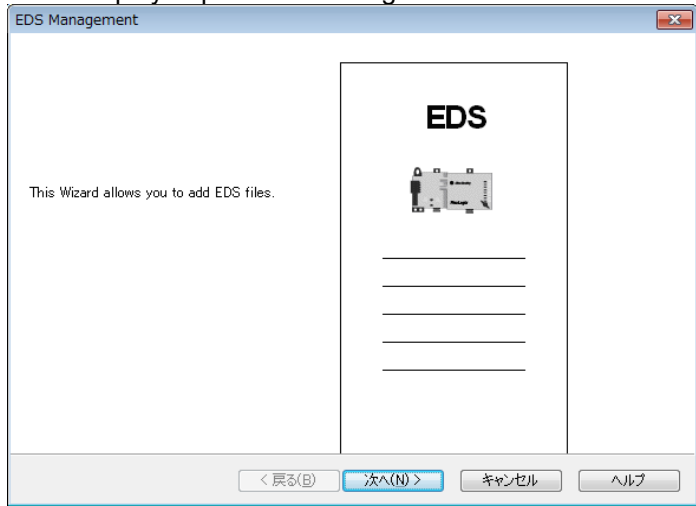
Device Library window

5. Device Setting and Configuration File Output

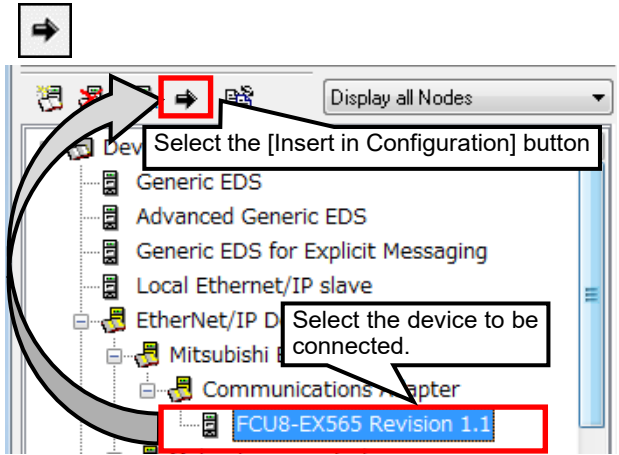
(a) Select the [Add] button  above the "Device Library"



(b) The "EDS management" screen appears.
After this, follow the displayed procedure to register the EDS file.



(3) Register the connected device to the "Configuration area window"
Select the device to be connected from the "Device Library" and then select the [Insert in Configuration] button.



5. Device Setting and Configuration File Output

(4) Setting connected device

When the procedure (3) is performed, the setting dialog of the connected device appears.

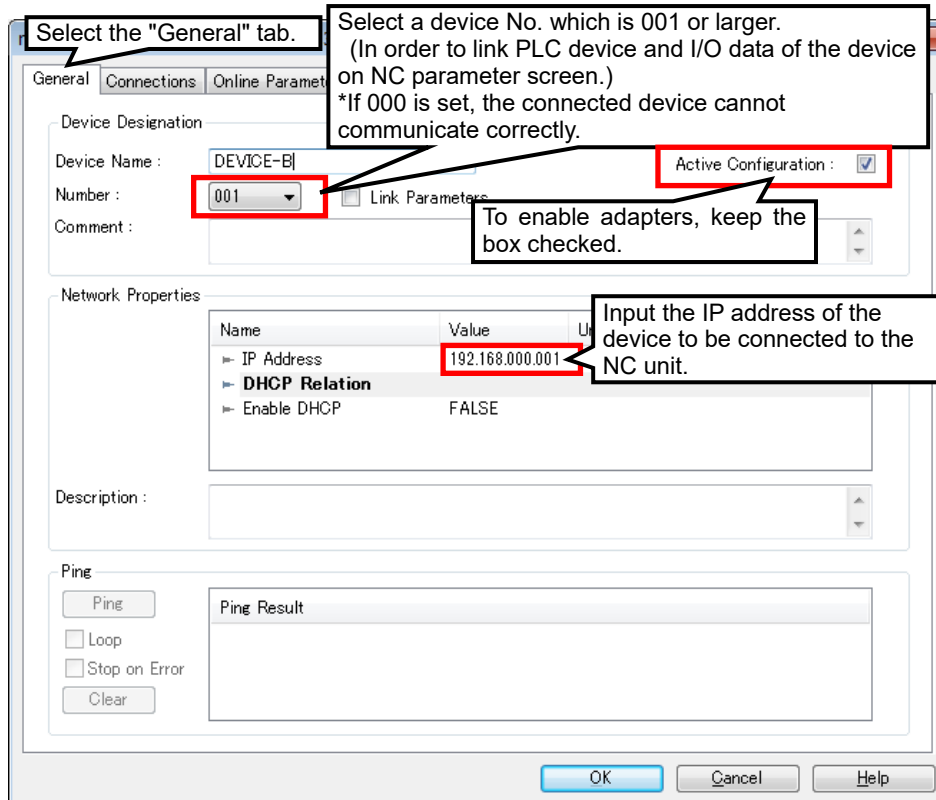
In this procedure, the setting detail differs depending on the EDS file (device).

(a) Inputting the IP address of the device to be connected to the NC unit

Set the IP address of the device to be connected to the NC unit.

If necessary, also change the device number. Normally, consecutive numbers starting with 001 are used.

For how to set and confirm the IP addresses of the connected devices, refer to the manual of each connected device.

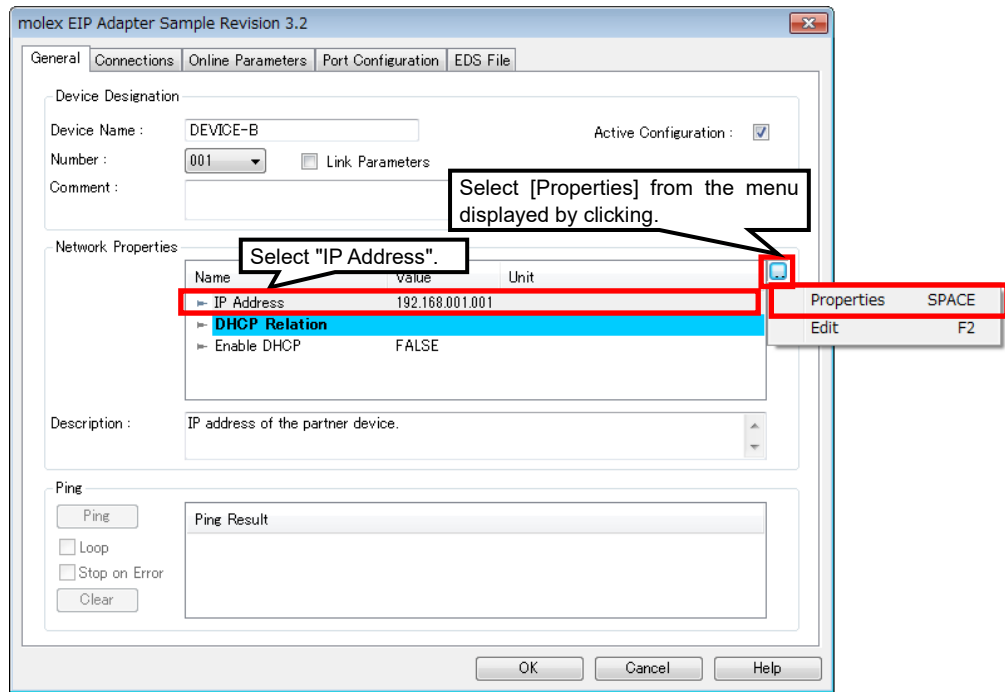


Setting dialog of connected device (General tab)

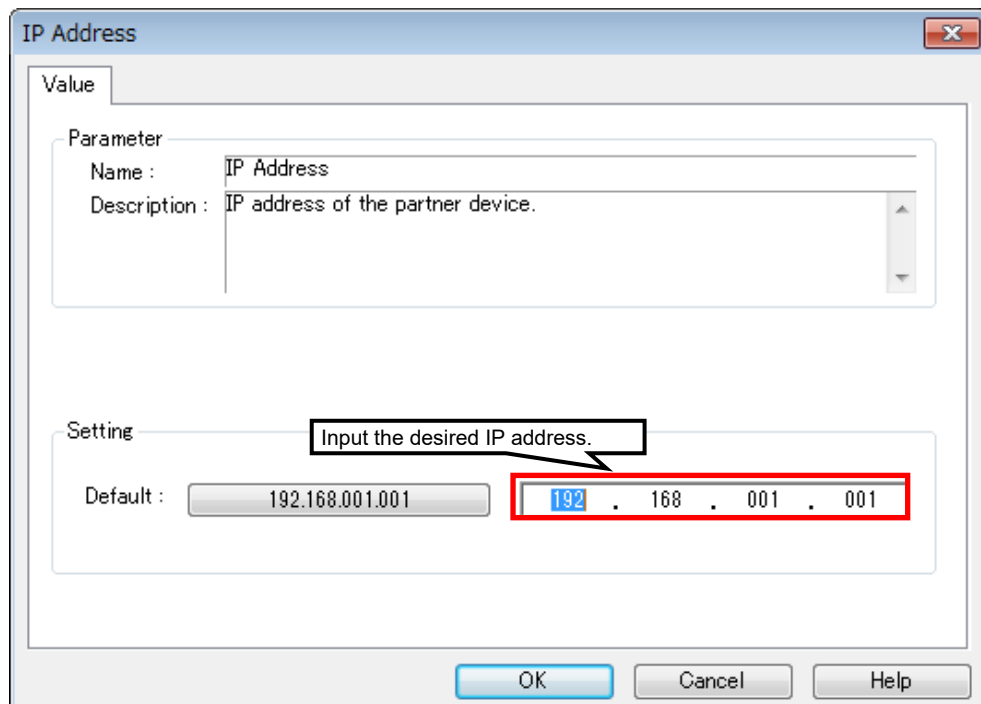
5. Device Setting and Configuration File Output

- Follow the procedure below to set an IP address with 3-digit segment to the connected device.

- (i) Select the "IP Address" field in the "Network Properties" area. Select the square shaped menu on the right of the "Network Properties" area, and select [Properties] in the displayed menu.



- (ii) Input the desired IP address in the "Setting" area of the displayed "IP Address" dialog, and select [OK].

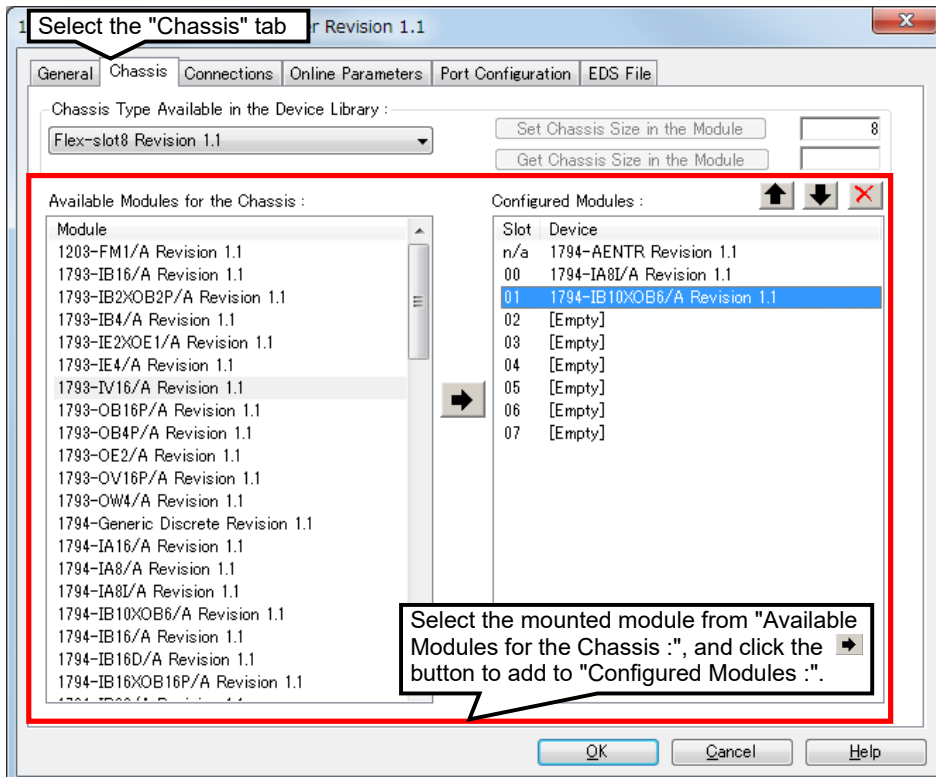


5. Device Setting and Configuration File Output

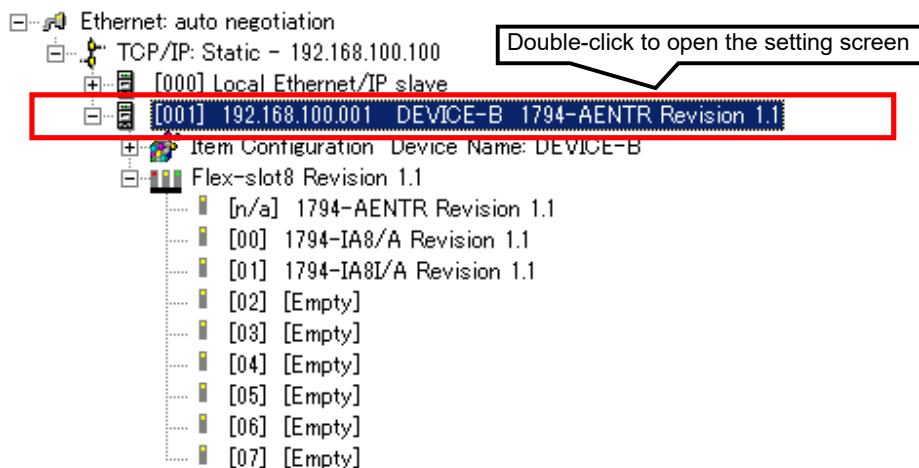
(b) Module setting (only when Rockwell Point I/O is used)

Select the module connected to the Point I/O chassis.

This operation is only required when a Rockwell Point I/O is being used as an adapter. When using other devices, skip this procedure.



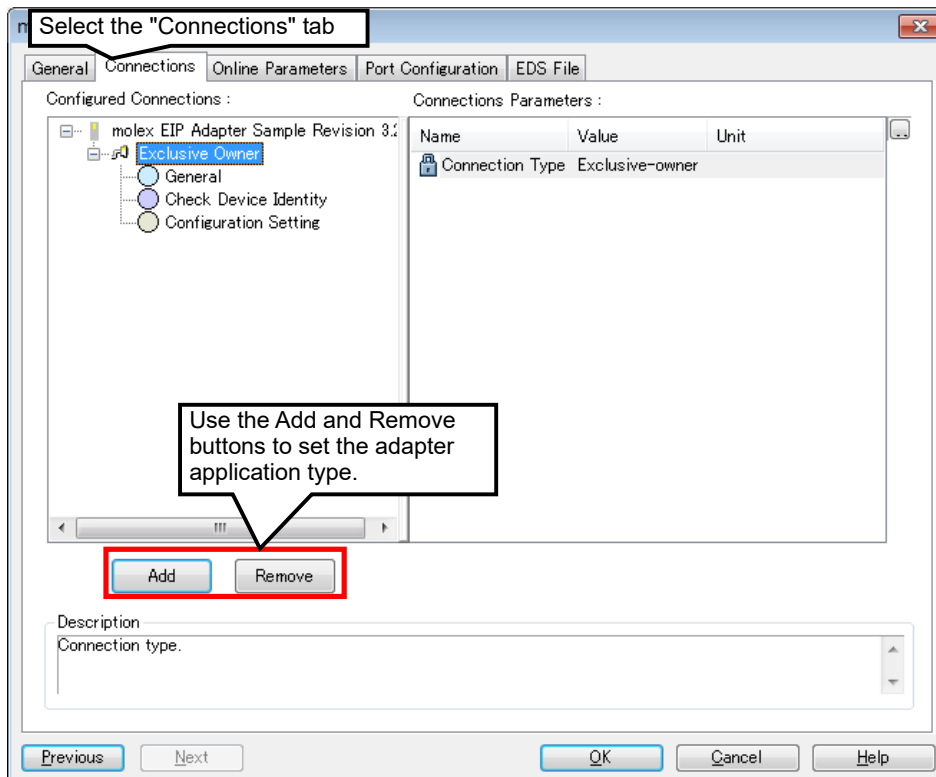
(Note 1) The setting can be changed. However, when the [Add] on the [Devices] menu is used to open the setting screen, the EIP-CT stops when the setting screen is closed. Open the setting screen by double-clicking the Point I/O in the "Configuration area window".



5. Device Setting and Configuration File Output

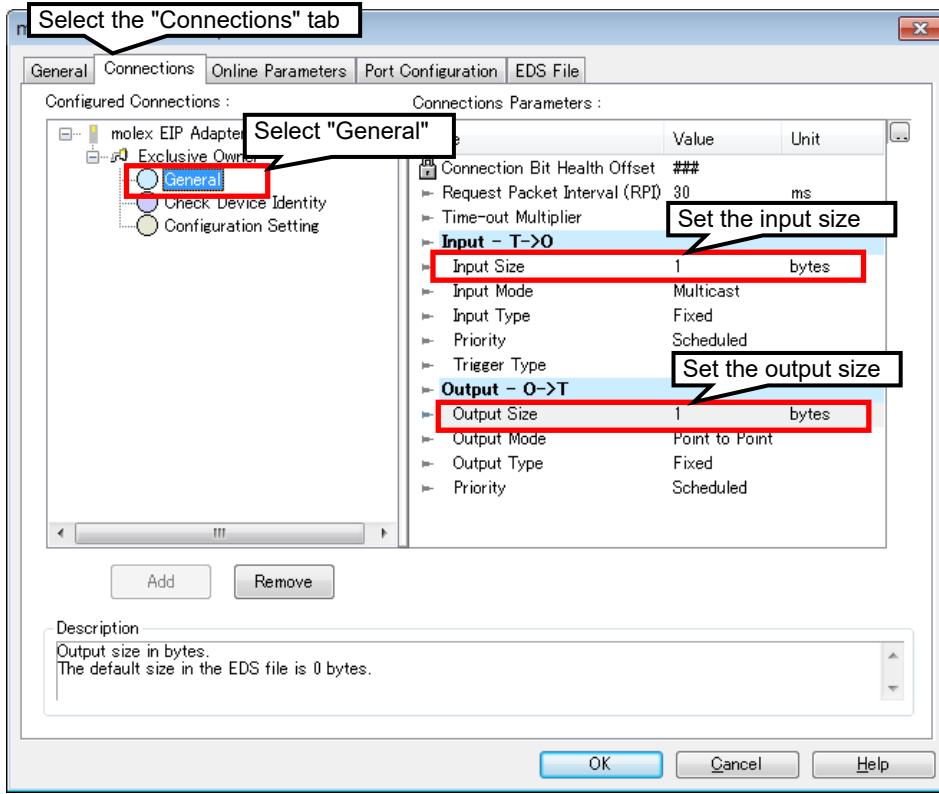
(c) Application type setting

Set the application type of the connected device. Refer to the manual of the connected device to confirm which application types are supported. The following is the example of when Exclusive Owner is selected.



5. Device Setting and Configuration File Output

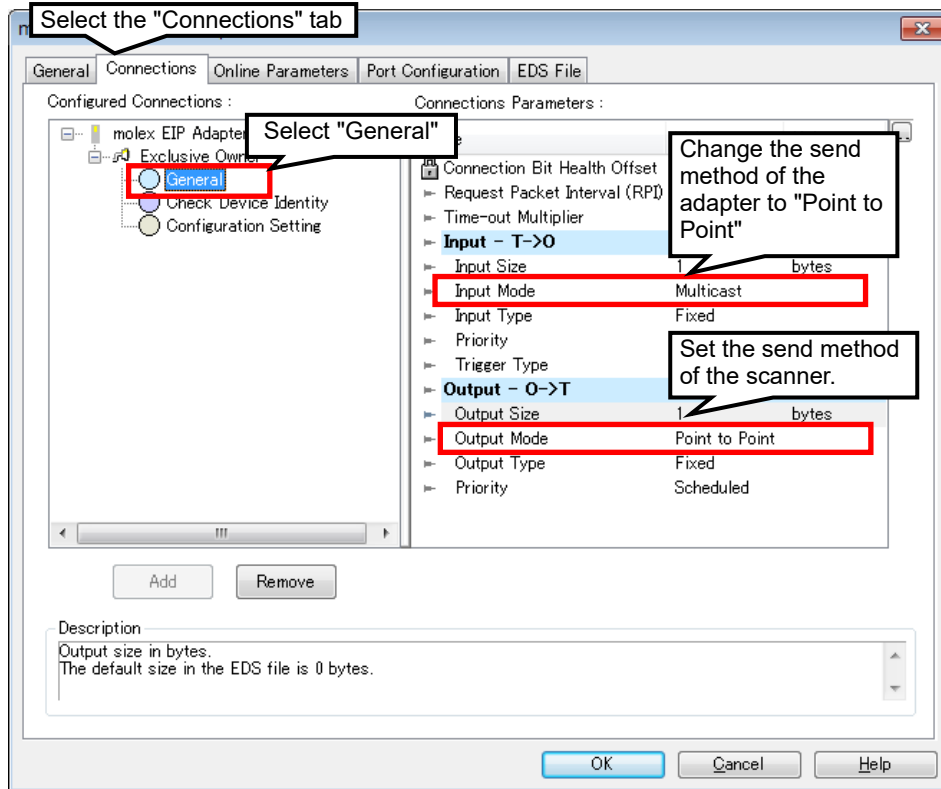
- (d) Setting the data size to be sent/received between the NC and the connected device
Refer to the manual of the connected device for the communication data size to be set to the connected device.



Setting dialog of connected device ("Connections" tab) (sending/receiving size)

5. Device Setting and Configuration File Output

- (e) Select a communication method between NC and connected device
 Where possible, select "Point to Point" for the send method of the adapter. Up to 20 adapters and 1 TTL whose send method is "Multicast" can be connected.

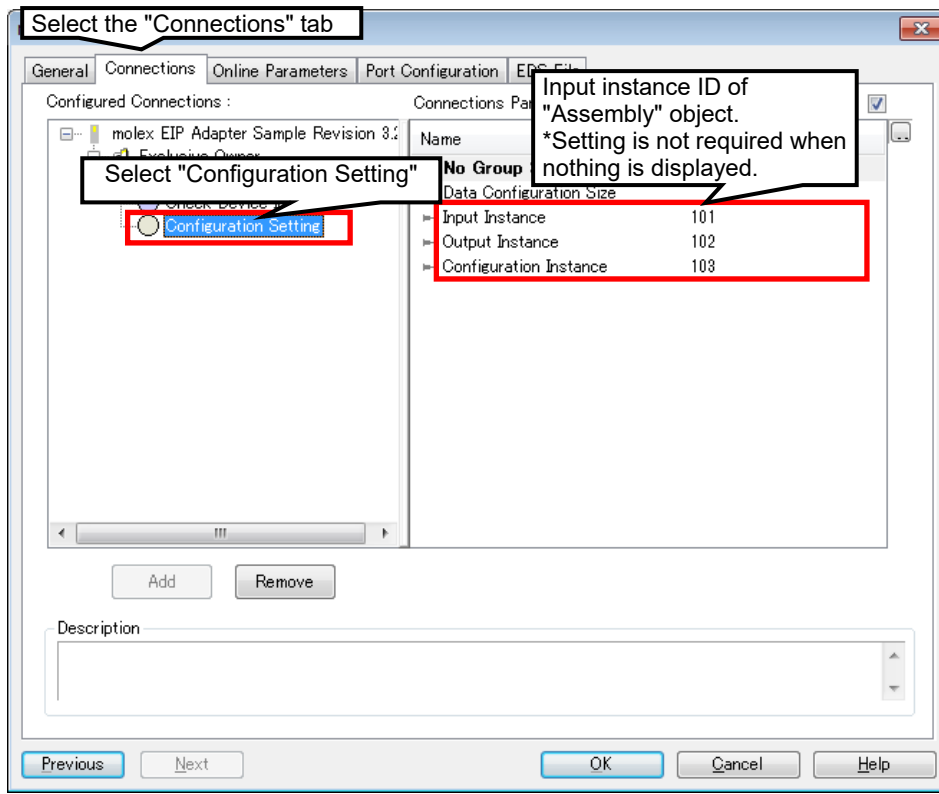


Setting dialog of connected device ("Connections" tab) (setting communication method)

5. Device Setting and Configuration File Output

(f) Setting instance ID input/output object

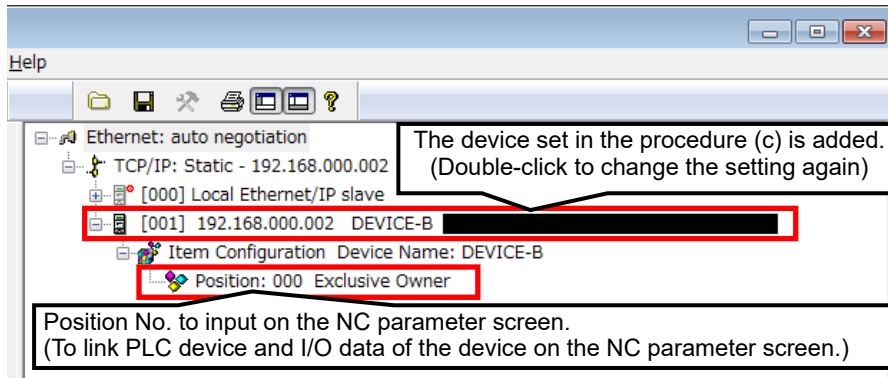
This setting may be unnecessary. Refer to the manual of the connected device for the instance ID to be set.



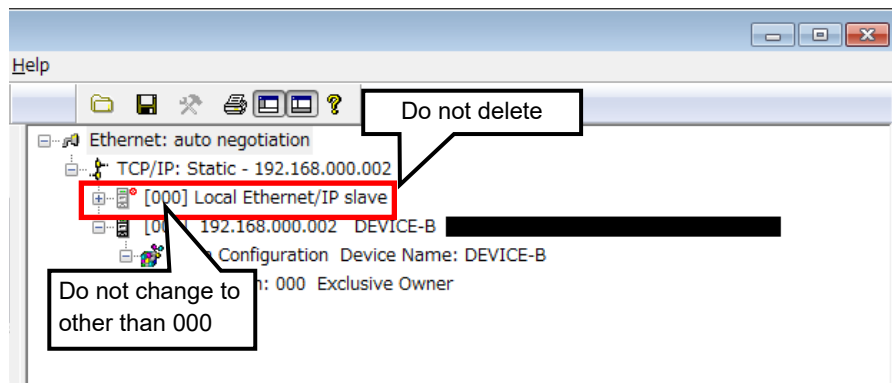
Setting dialog of connected device ("Connections" tab)

5. Device Setting and Configuration File Output

- (g) Confirm if the setting is registered on the "Configuration area window"
 After the procedure (c), select [OK] to register the connected device on the "Configuration area window"



(Note 1) Do not delete "Local Ethernet/IP slave". If "Local Ethernet/IP slave" is deleted, the NC will not operate correctly. Also, never change the device number of Local Ethernet/IP slave to a number other than 000. The Local Ethernet/IP slave will not operate correctly if a number other than 000 is specified.

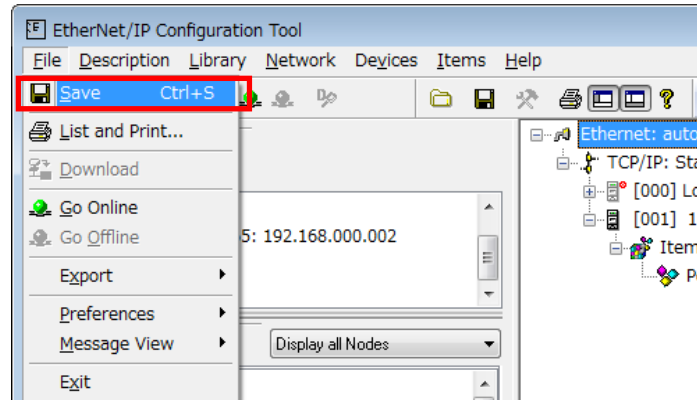


5. Device Setting and Configuration File Output

(5) Outputting the configuration file from the EIP-CT

After all connected devices are registered in procedure (3) and (4), output the configuration file. When the configuration is saved on the EIP-CT, the file is output automatically.

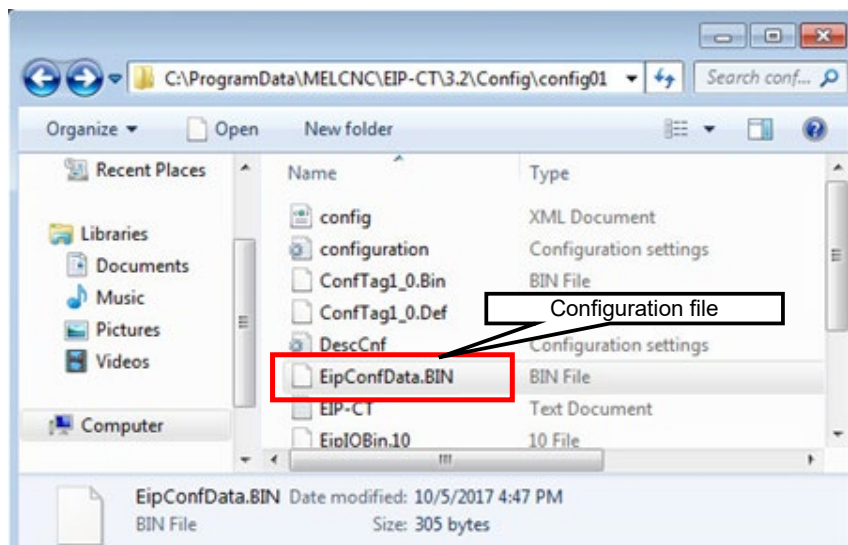
(a) Select the menu [File] + [Save], or press [Ctrl] + [S] keys to save the configuration.



(b) The configuration file "EipConfData.BIN" is created in the following folder.

"C:\ProgramData\MELCNC\EIP-CT\3.2\Config\XXX" (*1)

(*1) XXX represents the configuration name set on the EIP-CT.
The default value on the initial startup of the tool is "config01".



5. Device Setting and Configuration File Output

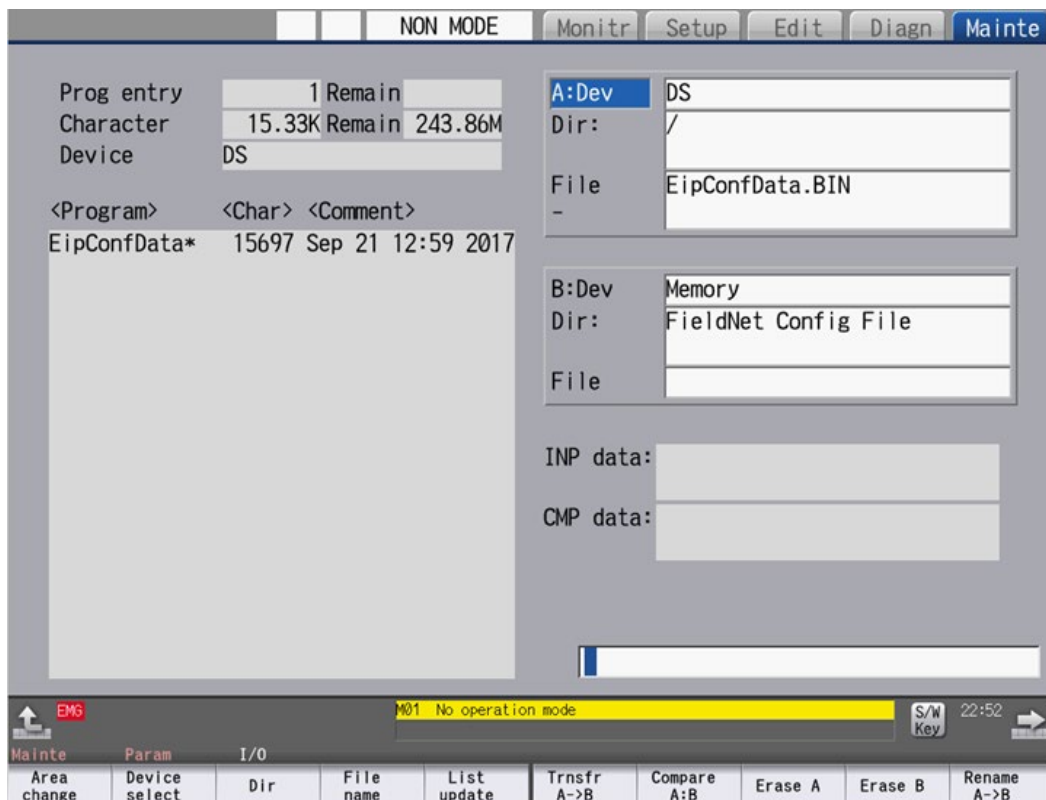
(6) Inputting the configuration file to the NC control unit

This section explains how to input the configuration file "EipConfData.BIN" to the NC control unit. This operation uses the "input/output" function of NC.

[Preparation] Save the configuration file "EipConfData.BIN" on an SD card or a USB memory and insert it in the NC control unit.

After inserting the SD card or USB memory, perform the following operations on the input/output screen.

- (a) Select [Mainte]→[I/O] to move to the input/output screen.
- (b) For [A:Dev], select the device where the configuration file is saved.
- (c) For the file name for [A:Dev], set "EipConfData.BIN".
- (d) For [B:Dev], select "Memory".
- (e) For the directory of [B:Dev], input "/FNET".
"FieldNet Config File" is set to the directory automatically.
- (f) Select [Trnfr A→B].
The configuration file is input to the NC control unit.



(Note 1) If the configuration file name is changed from "EipConfData.BIN" with the "Rename" function on the input/output screen, the NC control unit does not recognize the renamed file as the EtherNet/IP configuration file.

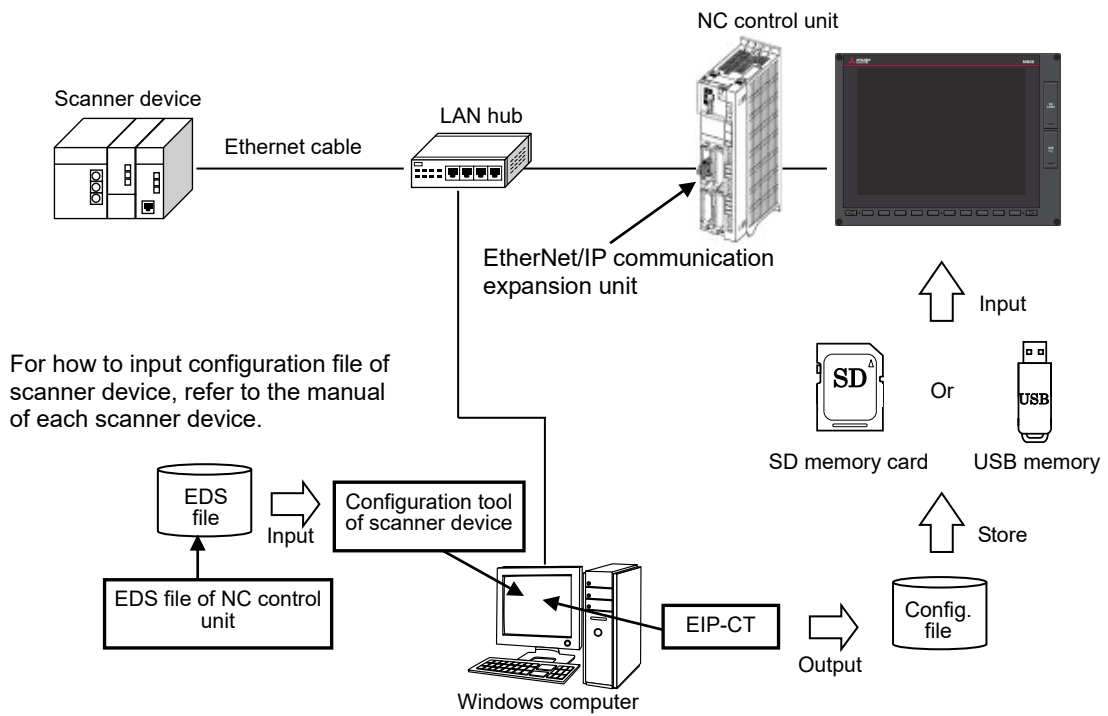
5. Device Setting and Configuration File Output

5.2 Adapter Function

The NC control unit can communicate with scanner devices (controller, etc.) with the EtherNet/IP adapter function.

The adapter function and the scanner function can be used at the same time.

5.2.1 Configuration



Configuration when the EtherNet/IP adapter function is used

(Note 1) Only one scanner device can write Implicit Messages to the NC control unit. When two or more scanner devices write to the NC control unit, the devices compete for memory, causing data to be lost.

5.2.2 How to Obtain the EDS File

In order to set the scanner devices that communicate with the NC control unit, the EDS file of the NC control unit is required. The EDS file of the NC control unit is stored on the installation disc of the configuration tool.

How to use the EDS file varies with each configuration tool of the scanner device. Refer to the instruction manual of the scanner device for details.

5. Device Setting and Configuration File Output

5.2.3 Configuration Setting

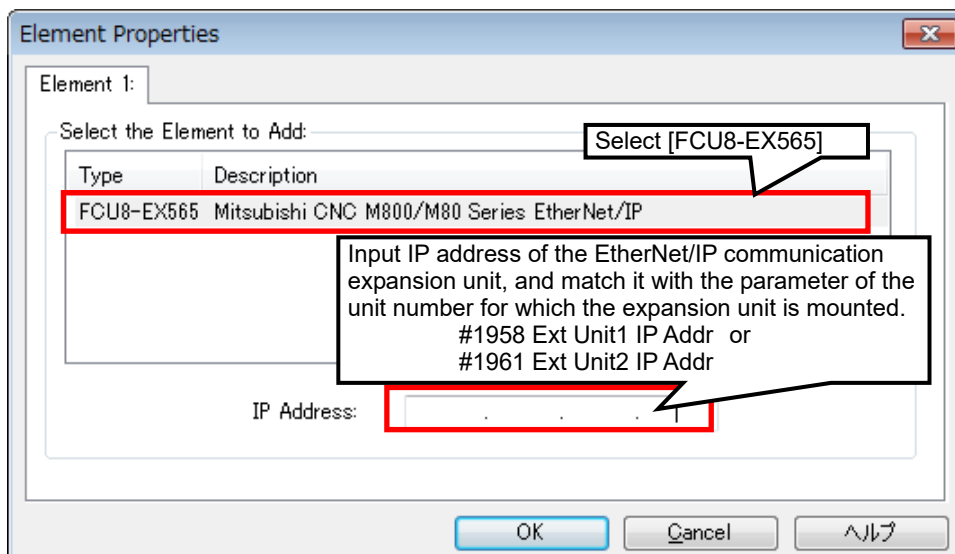
In order to use the adapter function, the connected device needs to be set with the EIP-CT, which is the tool operated on Windows. The configuration file with the adapter function enabled is output from the EIP-CT. Use the input/output function of the NC control unit to input the configuration file to the NC control unit, enabling the use of the NC control unit adapter function.

(1) Creating a new configuration by starting the EIP-CT

This procedure is only required for the first startup of the EtherNet/IP (the procedure is not required when the EIP-CT is started up for the second or subsequent time).

When the EIP-CT is started, the following dialog appears.

Select [FCU8-EX565], input the IP address of the EtherNet/IP communication expansion unit in [IP Address], and then select [OK].



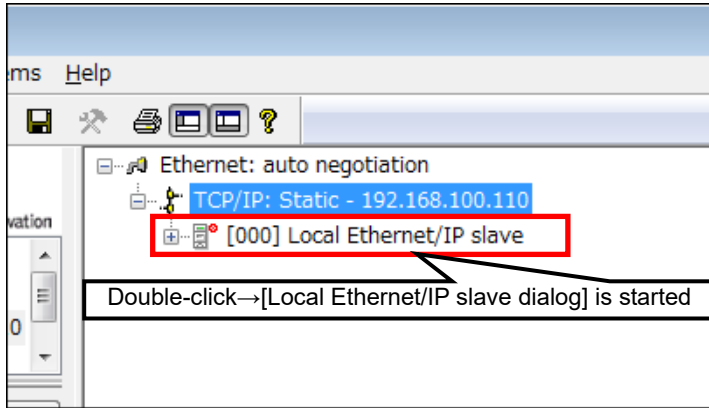
Add New Element dialog

5. Device Setting and Configuration File Output

(2) Setting the adapter function

Set the adapter function.

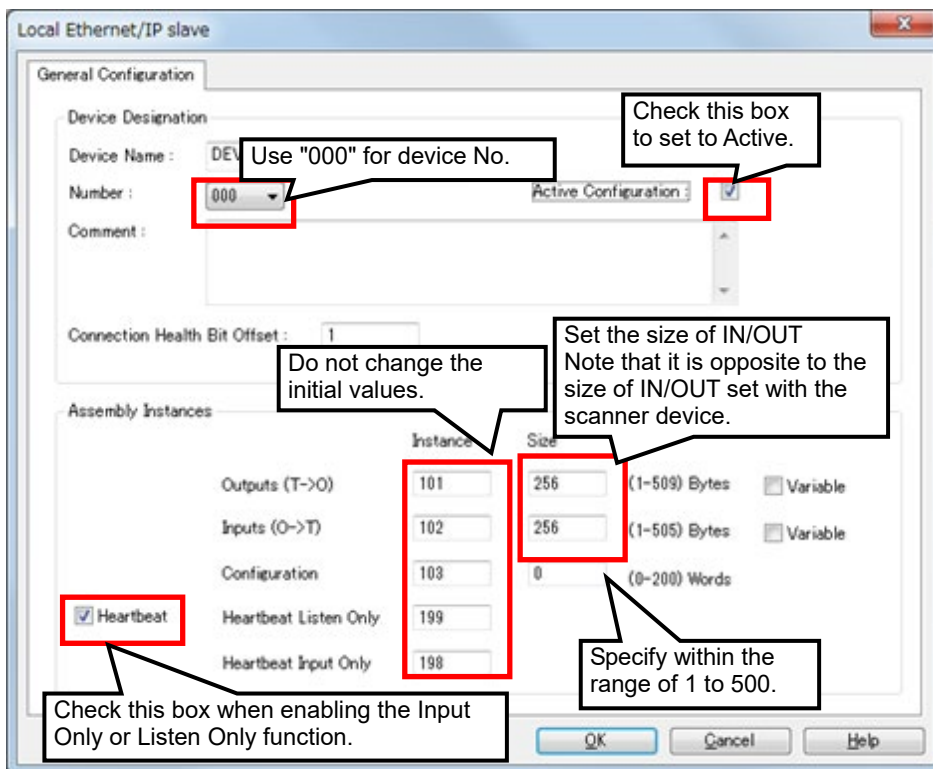
- (a) Double-click "Local Ethernet/IP slave" in the "Configuration area window" to open the "Local Ethernet/IP slave" dialog.



Configuration area window

- (b) Set the adapter function

Enable the adapter function. Set the sizes of instance 101 (PLC output data) and instance 102 (PLC input data) of assembly objects. After setting the following, select [OK].



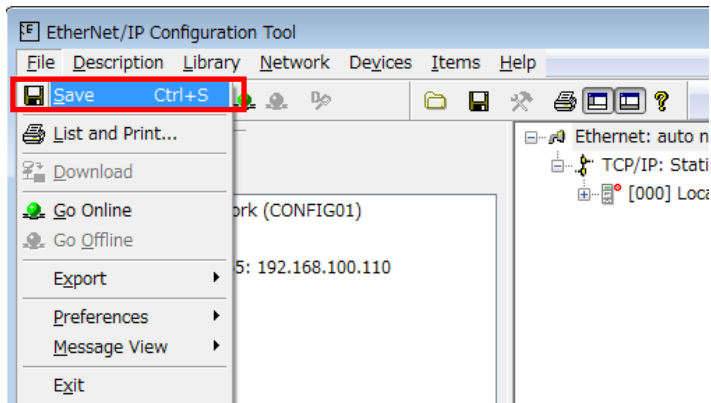
Setting dialog of the NC control unit (Host)

5. Device Setting and Configuration File Output

- (3) Outputting the configuration file from the EIP-CT
Output configuration file.

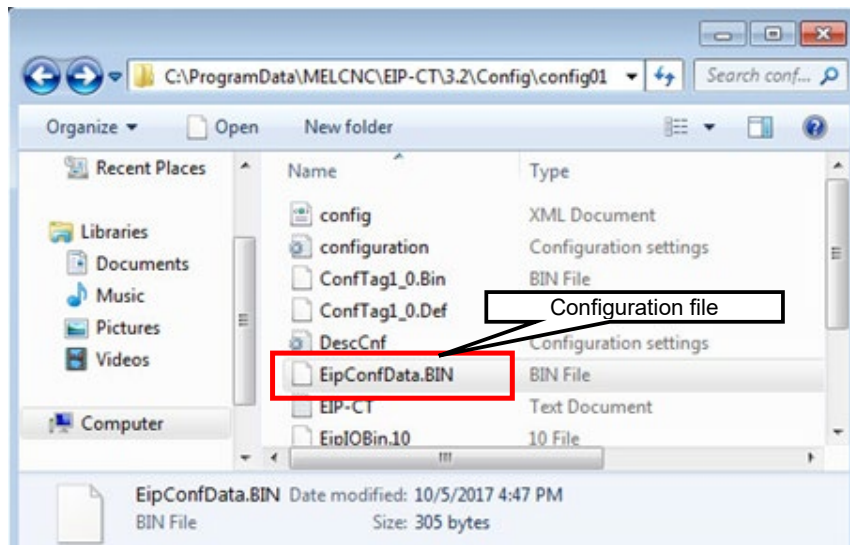
When configuration is saved on the EIP-CT, the configuration file is output automatically.

- (a) Select the [File] menu + [Save], or press [Ctrl] + [S] keys to save the configuration.



- (b) The configuration file "EipConfData.BIN" is created in the following folder.
"C:\ProgramData\MELCNC\EIP-CT\3.2\Config\XXX" (*1)

(*1) XXX represents the configuration name set on the EIP-CT.
The default value on the initial startup of the tool is "config01".



- (4) Inputting the configuration file to the NC control unit
Refer to "5.1.2 Operations in the EIP-CT" - "(6) Inputting the configuration file to the NC control unit".


6. Diagnostic Function

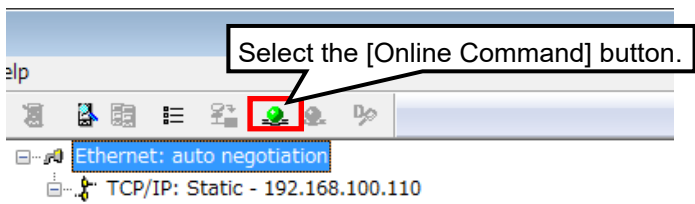
6. Diagnostic Function

Using the EIP-CT, which is a tool operating on Windows, enables the current status of each connected device to be diagnosed.


In order to perform diagnostics, a Windows computer with the EIP-CT installed needs to be connected to the EtherNet/IP communication expansion unit with an Ethernet cable.

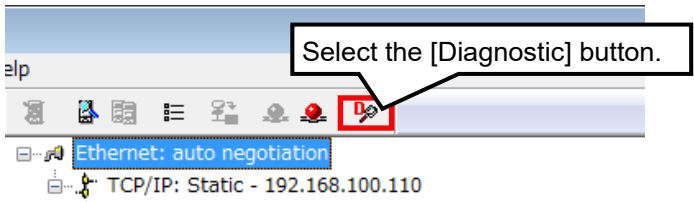
6.1 Procedures for Diagnostic Startup


- (1) Start the EIP-CT.
- (2) Connect the EIP-CT and the device.
Select the [Online Command] button  in the menu.

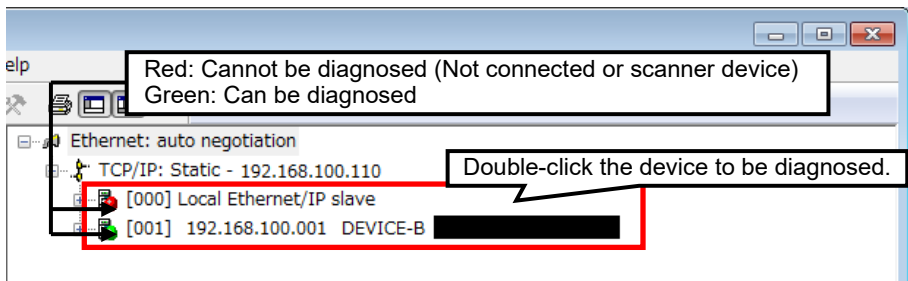


When it is successful, the [Online Command] button is grayed out and the [Offline Command] button next to the [Online Command] button is valid.

- (3) Enable the diagnostic function
Select the [Diagnostic] button  in the menu.



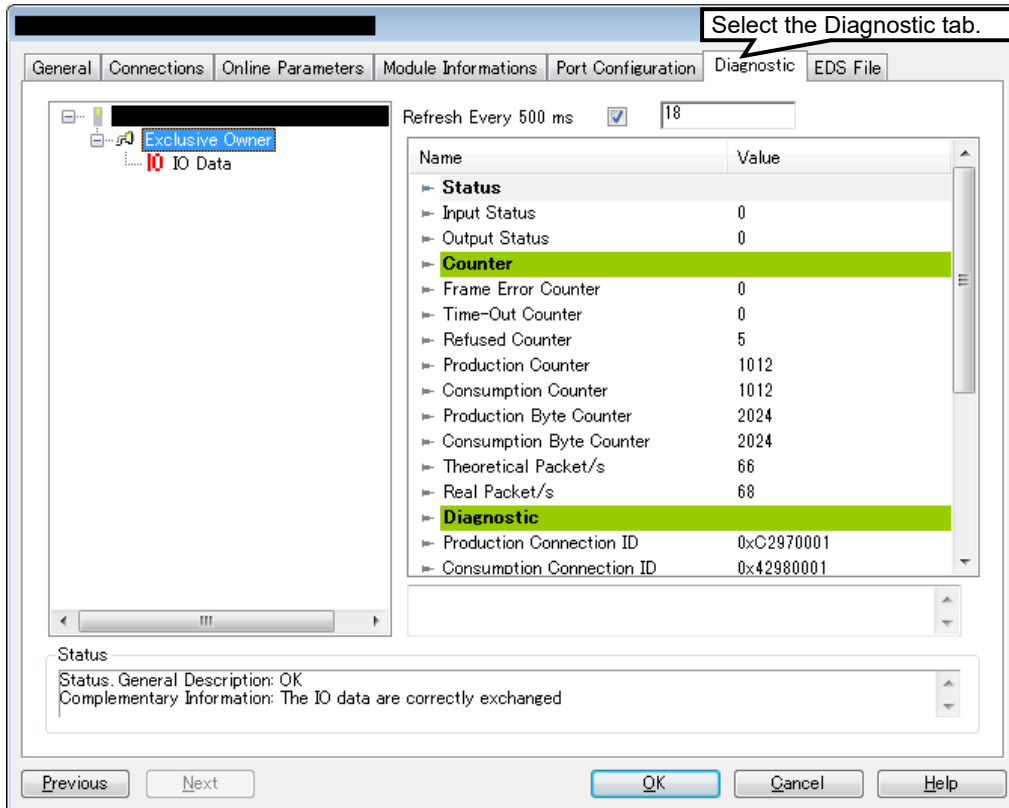
- (4) Select the device to be diagnosed
Double-click the device to be diagnosed on the "Configuration area window".
The device icon  red cannot be diagnosed. The one in green can be diagnosed.



6. Diagnostic Function

(5) Perform diagnostic

Click the "Diagnostic" tab to open the diagnostic screen.



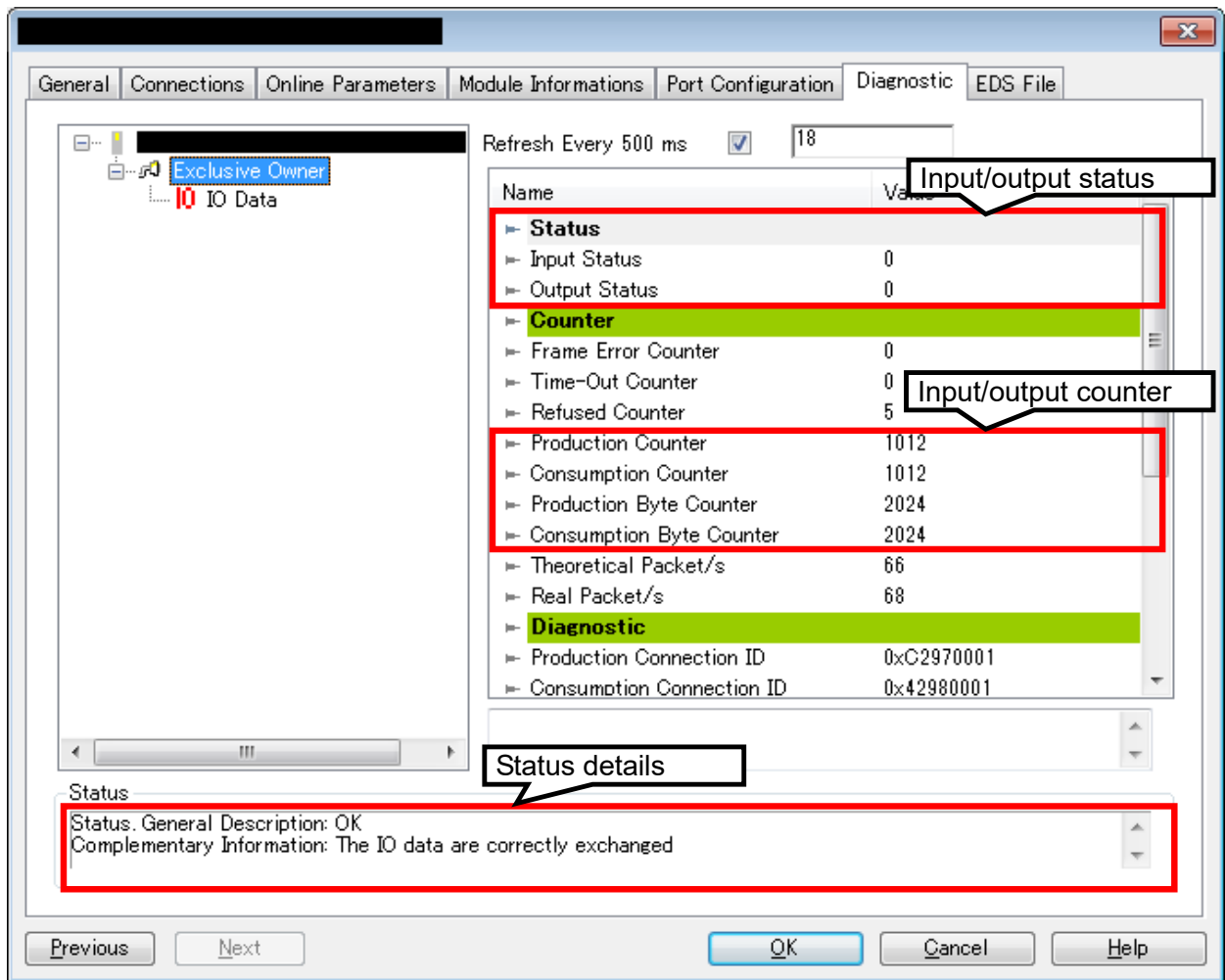
6. Diagnostic Function

6.2 Diagnostic Screen

There are two types of diagnostic screen: A screen for checking the current input/output status, and a screen for checking the current I/O data.

6.2.1 Diagnostic Status Confirmation Screen

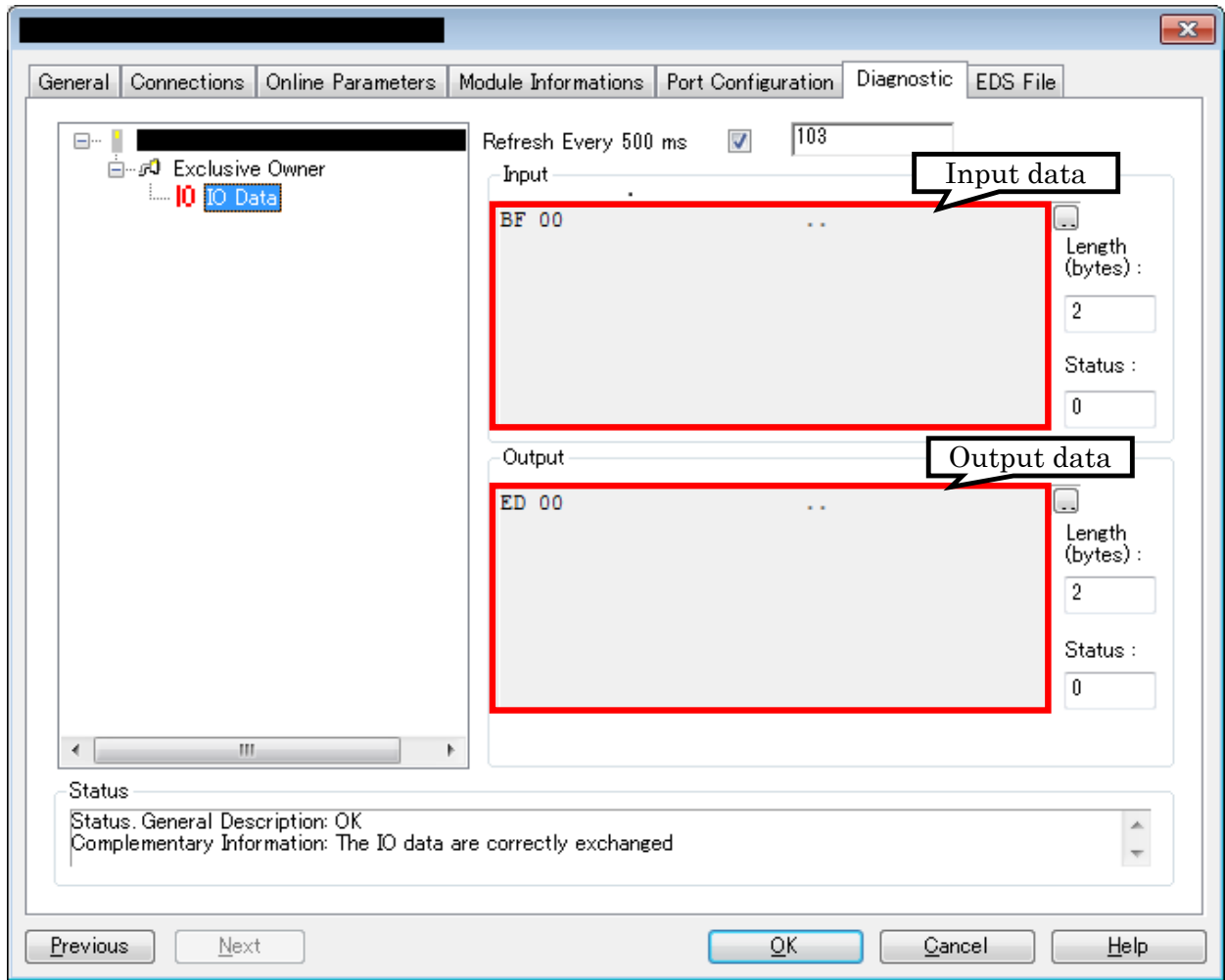
This is a screen to confirm input/output status, input/output counter, and current RPI setting value, etc. The value 0 set to the input/output status indicates a normal status whereas any other value indicates an error. The details of the error appear at the bottom of the screen under "Status".



6. Diagnostic Function

6.2.2 I/O Data Confirmation Screen

This is a screen to confirm what data is input/output for the device.



6. Diagnostic Function

Revision History

Date of revision	Manual No.	Revision details
Mar. 2018	IB(NA)1501536-A	First edition created.
Apr. 2023	IB(NA)1501536-B	<p>Contents were revised to correspond to MITSUBISHI CNC EtherNet/IP Configuration Tool software version A1.</p> <p>The following chapters were added.</p> <ul style="list-style-type: none">- 3.2.4 Select the Protection Type- 3.2.5 Input Serial Number <p>The following chapter was deleted.</p> <ul style="list-style-type: none">- 7. Compatible NC Versions <p>Due to adding and deleting of the chapters as above, the existing chapter numbers were changed.</p> <p>The following chapters were changed.</p> <ul style="list-style-type: none">- Precautions for Safety- 2. Operating Environment of the EIP-CT- 3.1 Requirements- 3.2 Installation Procedure- 3.2.8 Start the EIP-CT- 3.3 Uninstallation- 5.1.2 Operations in the EIP-CT <p>Other mistakes were corrected.</p>

Global Service Network

AMERICA

MITSUBISHI ELECTRIC AUTOMATION INC. (AMERICA FA CENTER)

Central Region Service Center (Chicago)
500 CORPORATE WOODS PARKWAY, VERNON HILLS, ILLINOIS 60061, U.S.A.
TEL: +1-847-478-2500 / FAX: +1-847-478-2650
Minneapolis, MN Service Satellite
Detroit, MI Service Satellite
Grand Rapids, MI Service Satellite
Milwaukee, WI Service Satellite
Cleveland, OH Service Satellite
Indianapolis, IN Service Satellite
St. Louis, MO Service Satellite

South/East Region Service Center (Georgia)

1845 SATELLITE BOULEVARD STE. 450, DULUTH, GEORGIA 30097, U.S.A.
TEL: +1-678-258-4529 / FAX: +1-678-258-4519
Charleston, SC Service Satellite
Charlotte, NC Service Satellite
Raleigh, NC Service Satellite
Dallas, TX Service Satellite
Houston, TX Service Satellite
Hartford, CT Service Satellite
Knoxville, TN Service Satellite
Nashville, TN Service Satellite
Baltimore, MD Service Satellite
Pittsburg, PA Service Satellite
Tampa, FL Service Satellite
Syracuse, NY Service Satellite
Orlando, FL Service Satellite
Lafayette, LA Service Satellite
Philadelphia, PA Service Satellite

Western Region Service Center (California)

5900-B KATELLA AVE. - 5900-A KATELLA AVE. CYPRESS, CALIFORNIA 90630, U.S.A.
TEL: +1-714-699-2625 / FAX: +1-847-478-2650
San Jose, CA Service Satellite
Seattle, WA Service Satellite
Denver, CO Service Satellite

Canada Region Service Center (Toronto)

4299 14TH AVENUE MARKHAM, ONTARIO L3R 0J2, CANADA
TEL: +1-905-475-7728 / FAX: +1-905-475-7935
Edmonton, AB Service Satellite
Montreal, QC Service Satellite

Mexico Region Service Center (Querétaro)

Parque Tecnológico Innovación Querétaro, Lateral Carretera Estatal 431, Km 2+200, Lote 91 Modulos 1 y 2
Hacienda la Machorra, CP 76246, El Marqués, Querétaro, México
TEL: +52-442-153-6050
Monterrey, NL Service Satellite
Mexico City, DF Service Satellite

BRAZIL

MITSUBISHI ELECTRIC DO BRASIL COMÉRCIO E SERVIÇOS LTDA.

Votorantim Office
AV. GISELE CONSTANTINO,1578, PARQUE BELA VISTA, VOTORANTIM-SP, BRAZIL CEP:18.110-650
TEL: +55-15-3023-9000
Blumenau, Santa Catarina Office

EUROPE

MITSUBISHI ELECTRIC EUROPE B.V.

European Service Headquarters (Dusseldorf, GERMANY)
Mitsubishi-Electric-Platz 1 40882 RATINGEN, GERMANY
TEL: +49-2102-486-5000 / FAX: +49-2102-486-5910

South Germany Service Center (Stuttgart)

SCHELMENWASENSTRASSE 16-20, 70567 STUTTGART, GERMANY
TEL: +49-711-770598-0 / FAX: +49-711-770598-141

France Service Center (Paris)

2 RUE DE L'UNION, 92565 RUEIL-MALMAISON CEDEX, FRANCE
TEL: +33-1-41-02-83-13 / FAX: +33-1-49-01-07-25

France Service Satellite (Lyon)

240, ALLEE JACQUES MONOD 69800 SAINT PRIEST FRANCE
TEL: +33-1-41-02-83-13 / FAX: +33-1-49-01-07-25

Italy Service Center (Milan)

VIA ENERGY PARK 14, VIMERCATE 20871 (MB) ITALY
TEL: +39-039-6053-342 / FAX: +39-039-6053-206

Italy Service Satellite (Padova)

VIA G. SAVELLI, 24 - 35129 PADOVA, ITALY
TEL: +39-039-6053-342 / FAX: +39-039-6053-206

U.K. Service Center

TRAVELLERS LANE, HATFIELD, HERTFORDSHIRE, AL10 8XB, U.K.
TEL: +44-1707-288-780 / FAX: +44-1707-278-695

Spain Service Center

CTRA. RUBI, 76-80 8174 SAINT CUGAT DEL VALLES, BARCELONA, SPAIN
TEL: +34-935-65-2236 / FAX: +34-935-89-1579

Poland Service Center

UL.KRAKOWSKA 50, 32-083 BALICE, POLAND
TEL: +48-12-347-6500 / FAX: +48-12-630-4701

Hungary Service Center

BUDAÖRS OFFICE PARK, SZABADSÁG ÚT 117., 2040 BUDAÖRS, HUNGARY
TEL: +48-12-347-6500 / FAX: +48-12-630-4701

Turkey Service Center

MITSUBISHI ELECTRIC TURKEY ELEKTRİK ÜRÜNLERİ A.Ş
SERIFALI MAHALLESİ KALE SOKAK, NO.41 34775
UMRANIYE, ISTANBUL, TURKEY
TEL: +90-216-969-2500 / FAX: +90-216-661-44-47

Czech Republic Service Center

AutoCont Control Systems s.r.o (Service Partner)
KAFKOVA 1853/3, 702 00 OSTRAVA 2, CZECH REPUBLIC
TEL: +420-59-5691-185 / FAX: +420-59-5691-199

Russia Service Center

MITSUBISHI ELECTRIC RUSSIA LLC
LETNIKOVSKAYA STREET 2, BLD.1, 5TH 115114 MOSCOW, RUSSIA
TEL: +7-495-721-2070 / FAX: +7-495-721-2071

Sweden Service Center

HAMMARBACKEN 14, P.O.BOX 750 SE-19127, SOLLENTUNA, SWEDEN
TEL: +46-8-6251200 / FAX: +46-8-6251014

Bulgaria Service Center

AKHNATON Ltd. (Service Partner)
4 ANDREJ LJAPCHEV BLVD. POB 21, BG-1756 SOFIA, BULGARIA
TEL: +359-2-8176009 / FAX: +359-2-9744061

Ukraine Service Center (Kiev)

CSC Automation Ltd. (Service Partner)
4 B. YEVHENA SVERSTYUKA STR., 02002 KIEV, UKRAINE
TEL: +380-44-494-3344 / FAX: +380-44-494-3366

Belarus Service Center

TECHNIKON Ltd. (Service Partner)
NEZAVISIMOSTI PR.177, 220125 MINSK, BELARUS
TEL: +375-17-393-1177 / FAX: +375-17-393-0081

South Africa Service Center

Adroit Technologies (Service Partner)
20 WATERFORD OFFICE PARK, WATERFORD DRIVE, CNR OF WITKOPPEN ROAD,
FOURWAYS JOHANNESBURG SOUTH AFRICA
TEL: +27-11-658-6100 / FAX: +27-11-658-6101

ASEAN**MITSUBISHI ELECTRIC ASIA PTE. LTD. (ASEAN FA CENTER)**

Singapore Service Center
307 ALEXANDRA ROAD MITSUBISHI ELECTRIC BUILDING SINGAPORE 159943
TEL: +65-6473-2308 / FAX: +65-6476-7439

PHILIPPINES**MELCO FACTORY AUTOMATION PHILIPPINES INC.**

Head Office
128 LOPEZ RIZAL STREET, BRGY., HIGHWAY HILLS, MANDALUYONG CITY, MM PHILIPPINES 1550
TEL: +63-2-8256-8042 / FAX: +632-8637-2294

Philippines Service Center
KM.23 WEST SERVICE ROAD SSH, CUPANG, MUNTINLUPA CITY, PHILIPPINES
TEL: +63-2-8807-0420 / FAX: +63-2-8842-5202

VIETNAM**MITSUBISHI ELECTRIC VIETNAM CO., LTD.**

Vietnam Ho Chi Minh Service Center
11TH & 12TH FLOOR, VIETTEL TOWER B, 285 CACH MANG THANG 8 STREET, WARD 12, DISTRICT 10,
HO CHI MINH CITY, VIETNAM
TEL: +84-28-3910-5945 / FAX: +84-28-3910-5947

Vietnam Hanoi Service Center
14TH FLOOR, CAPITAL TOWER, 109 TRAN HUNG DAO STREET, CUA NAM WARD,
HOAN KIEM DISTRICT, HA NOI CITY, VIETNAM
TEL: +84-24-3937-8075 / FAX: +84-24-3937-8076

INDONESIA**PT. MITSUBISHI ELECTRIC INDONESIA**

Indonesia Service Center (Cikarang)
JL. KENARI RAYA BLOK G2-07A, DELTA SILICON 5, LIPPO CIKARANG - BEKASI 17550, INDONESIA
TEL: +62-21-2961-7797 / FAX: +62-21-2961-7794

MALAYSIA**MITSUBISHI ELECTRIC SALES MALAYSIA SDN. BHD.**

Malaysia Service Center (Kuala Lumpur Service Center)
LOT 11, JALAN 219, P.O BOX 1036, 46860 PETALING JAYA, SELANGOR DARUL EHSAN, MALAYSIA
TEL: +60-3-7626-5032
Johor Bahru Service Satellite
Pulau Pinang Service Satellite

THAILAND**MITSUBISHI ELECTRIC FACTORY AUTOMATION (THAILAND) CO., LTD.**

Thailand Service Center (Bangkok)
101, TRUE DIGITAL PARK OFFICE, 5TH FLOOR, SUKHUMVIT ROAD, BANGCHAK, PHRA KHANONG,
BANGKOK, 10260 THAILAND
TEL: +66-2-092-8600 / FAX: +66-2-043-1231-33

INDIA**MITSUBISHI ELECTRIC INDIA PVT., LTD.**

CNC Technical Center (Bangalore)
PLOT NO. 56, 4TH MAIN ROAD, PEENYA PHASE 3,
PEENYA INDUSTRIAL AREA, BANGALORE 560058, KARNATAKA, INDIA
TEL: +91-80-4655-2121
Chennai Service Satellite
Coimbatore Service Satellite
Hyderabad Service Satellite

North India Service Center (Gurgaon)
PLOT 517, GROUND FLOOR, UDYOG VIHAR PHASE-III, GURUGRAM 122008, HARYANA, INDIA
TEL: +91-124-463-0300
Ludhiana Service Satellite
Panthenagar Service Satellite
Delhi Service Satellite
Jamshedpur Service Satellite
Manesar Service Satellite

West India Service Center (Pune)
ICC-Devi GAURAV TECHNOLOGY PARK, UNIT NO.402, FOURTH FLOOR, NORTH WING,
SURVEY NUMBER 191-192 (P), NEXT to INDIAN CARD CLOTHING COMPANY Ltd,
OPP. VALLABH NAGAR, PIMPRI, PUNE- 411 018, MAHARASHTRA, INDIA
TEL: +91-20-6819-2274
Kolhapur Service Satellite
Aurangabad Service Satellite
Mumbai Service Satellite

West India Service Center (Ahmedabad)
204-209, 2ND FLOOR, 31FIVE, CORPORATE ROAD PRAHLADNAGAR,
AHMEDABAD -390015, GUJARAT, INDIA
TEL: + 91-79-6777-7888
Rajkot Service Satellite

CHINA**MITSUBISHI ELECTRIC AUTOMATION (CHINA) LTD. (CHINA FA CENTER)**

CNC Call Center
TEL: +86-400-921-5130

Shanghai Service Center
NO.1386 HONG QIAO ROAD, CHANG NING QU, SHANGHAI 200336, CHINA
TEL: +86-21-2322-3030 / FAX: +86-21-2322-3000*8422
Qingdao Service Center
Suzhou Service Center
Wuhan Service Center
Ningbo Service Center
Hefei Service Center
Beijing Service Center
Tianjin Service Center
Xian Service Center
Dalian Service Center
Chengdu Service Center

Shenzhen Service Center
LEVEL8, GALAXY WORLD TOWER B, 1 YABAO ROAD, LONGGANG DISTRICT,
SHENZHEN 518129, CHINA
TEL: +86-755-2399-8272 / FAX: +86-755-8229-3686
Dongguan Service Center
Xiamen Service Center

KOREA**MITSUBISHI ELECTRIC AUTOMATION KOREA CO., LTD. (KOREA FA CENTER)**

Korea Service Center
8F GANGSEO HANGANG XI-TOWER A, 401 YANGCHEON-RO, GANGSEO-GU,
SEOUL 07528 KOREA
TEL: +82-2-3660-9631 / FAX: +82-2-3664-8668
Korea Daegu Service Satellite

TAIWAN**MITSUBISHI ELECTRIC TAIWAN CO., LTD. (TAIWAN FA CENTER)**

Taiwan Taichung Service Center
NO. 8-1, GONGYEQU 16th RD., XITUN DIST., TAICHUNG CITY 40768, TAIWAN
TEL: +886-4-2359-0688 / FAX: +886-4-2359-0689

Taiwan Taipei Service Center
11F, NO.88, SEC.6, ZHONGSHAN N. RD., SHILIN DIST., TAIPEI CITY 11155, TAIWAN
TEL: +886-2-2833-5430 / FAX: +886-2-2833-5433

Taiwan Tainan Service Center
11F.-1, NO.30, ZHONGZHENG S. RD., YONGKANG DIST., TAINAN CITY 71067, TAIWAN
TEL: +886-6-252-5030 / FAX: +886-6-252-5031

OCEANIA**MITSUBISHI ELECTRIC AUSTRALIA PTY. LTD.**

Oceania Service Center
348 VICTORIA ROAD, RYDALMERE, N.S.W. 2116 AUSTRALIA
TEL: +61-2-9684-7269 / FAX: +61-2-9684-7245

Notice

Every effort has been made to keep up with software and hardware revisions in the contents described in this manual. However, please understand that in some unavoidable cases simultaneous revision is not possible.

Please contact your Mitsubishi Electric dealer with any questions or comments regarding the use of this product.

Duplication Prohibited

This manual may not be reproduced in any form, in part or in whole, without written permission from Mitsubishi Electric Corporation.

COPYRIGHT 2018-2023 MITSUBISHI ELECTRIC CORPORATION ALL RIGHTS RESERVED

mitsubishi electric corporation

HEAD OFFICE : TOKYO BLDG.,2-7-3 MARUNOUCHI,CHIYODA-KU,TOKYO 100-8310,JAPAN

MODEL	mitsubishi CNC EtherNet/IP Configuration Tool
MODEL CODE	100-664
Manual No.	IB-1501536