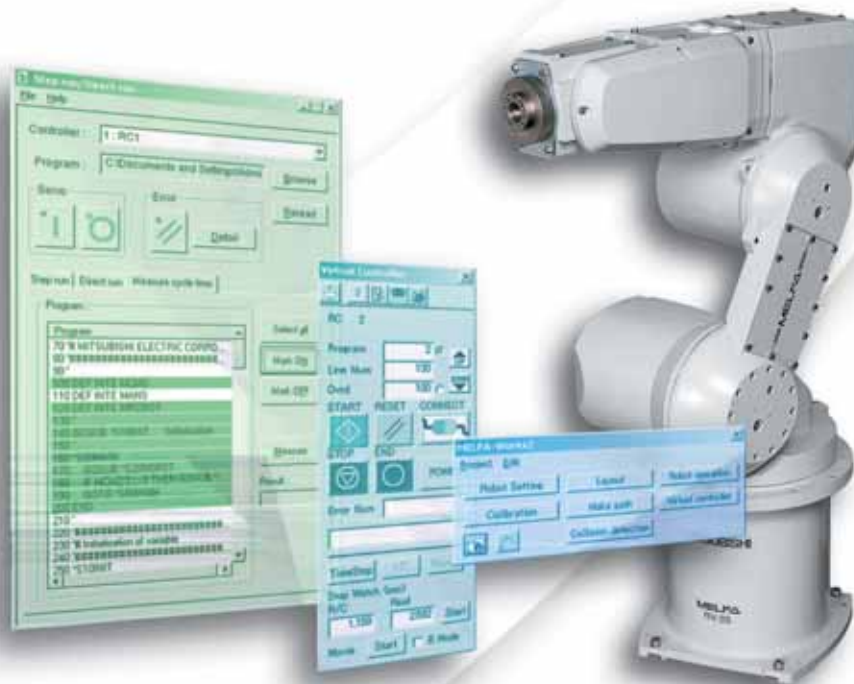


MELFA SW

Software for Industrial Robots

Virtual engineering

Programming and vision software from your desktop



The ultimate add-in tool for the 3D CAD software "SolidWorks"



Automatically generate robot programs from existing CAD models to reduce installation and commissioning time

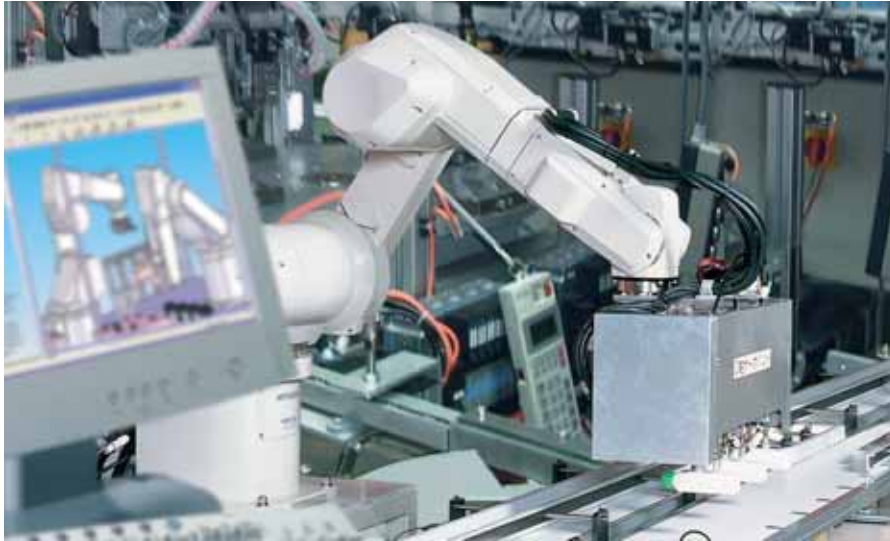


Complete robot simulation capability allows system design verification before purchasing hardware



Extract robot operation parameters from existing CAD data to avoid complex manual teaching

Reduce project times and costs



Simulation of industrial robots with the SolidWorks® user interface

In today's global economy, competition can come from anywhere in the world. Established manufacturing methods need constant review. Robotics have made key contributions to quality and productivity, but implementing a robotic cell can be costly and time consuming.

Virtual engineering

MELFA-Works from Mitsubishi Electric is an add-on tool for the widely popular SolidWorks® 3D CAD software package.

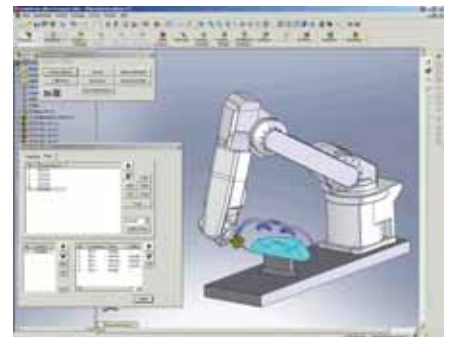
This powerful combination of software allows users to create and develop teaching position data and robotic programming sequences in a virtual world, i.e. without the need of hardware.

Together, MELFA-Works and the SolidWorks® platform can extend an existing robot simulation system with new capabilities and supplementary functions.

MELFA-Works provides extensive help and support. It also facilitates offline development and testing of robot programs that will be used later in real applications.

Production engineering needs to be fast and accurate. Few modern production facilities offer the chance for lengthy iterative R&D. This mandate seems mutually exclusive to complex robotics, with its opportunities for collisions, sub-optimal travel paths and other challenges.

MELFA-Works addresses this with a virtual engineering workbench which allows you to test and prove production environments using existing CAD data. Hence any design issues can be identified and resolved quickly before real hardware is ever purchased.



Following workpiece contours in MELFA-Works

Test in real time

MELFA-Works is able to precisely simulate and determine system cycle times. Hence, users can test all parts of their program under real-time conditions, allowing quick and easy system optimization.

A powerful software toolbox

MELFA-Works significantly reduces the engineering time and overheads involved in both robot teaching and operation through a powerful software toolbox. For example, the loading and organizing of parts data for external units can be made in the way that suits each user's unique requirements. Other highlights include the use of Automated Tool Changers (ATCs) generated by SolidWorks® to manage the installation of hand grippers.

Of course programs generated during simulation can be used directly or edited for deployment on robots with similar tasks, even multitasking modes can be simulated in the software's "task slot manager".

In addition, programs can be tested step-by-step or by direct execution, including observance of user defined breakpoints. Robot simulations can even be used in Jog mode.

The complete engineering environment also means additional axes can also be simulated along with I/O operation. Furthermore, the complete simulation (including movement paths) can be saved as an AVI video file for reference later on.

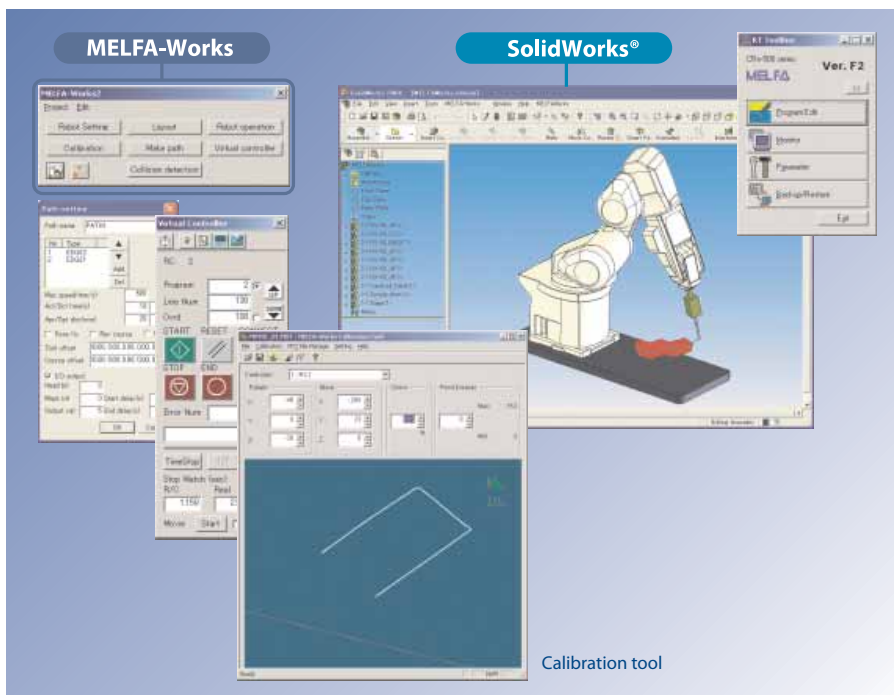
Vision solutions made easy

MELFA-Works is complemented by MELFA-Vision. This software allows users to quickly and easily set-up and customize networked vision systems in-conjunction with robotic operation.

Vision solutions allow robot users the chance to either visually inspect production parts against predefined templates or to manage production parts delivered in a random presentation.

Once items are checked and oriented against an image "mask" the robot can then perform its assigned tasks.

MELFA-Vision allows data from up to seven networked vision sensors to be shared between three robots, reducing setup times and hardware costs as well as producing more compact engineering environments.



The interaction of MELFA-Works and SolidWorks®

■ Easy and efficient: MELFA-Vision

The MELFA-Vision software enables easy setup and programming using the MELFA Basic IV robot language. Standard job programs supporting various types of operations are provided. Using these programs, even a first-time user can simply operate vision sensor systems.

An easy calibration function is integrated as well as a log function that allows the user to check sensor images on a personal computer.

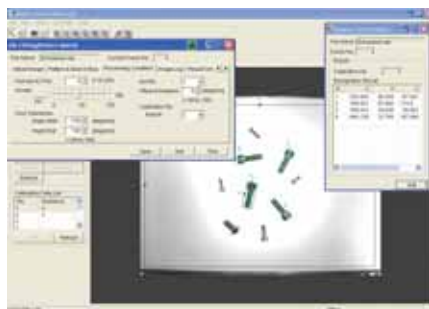
Network vision templates (job library) support pattern matching and blob functions, ready to use.

The enhanced high speed image processing function can detect moving parts, including those rotated 360 degrees.

The MELFA-Vision software is the only tool needed to easily and quickly customize vision applications.



Screen shot of reference point setting



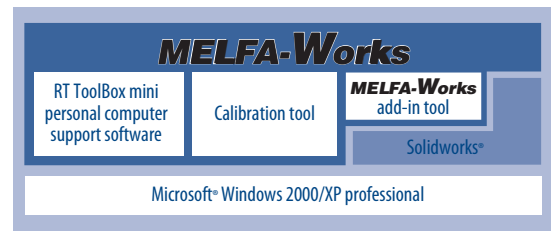
Screen shot of job editing

Product Configuration ///

Name	Model	Quantity
3D simulator (SolidWorks® add-in tool)		
MELFA-Works	3D-21C-WINE	1

Notes:

MELFA-Works is an add-in tool for SolidWorks® products. The customer needs to purchase or already have SolidWorks®. The personal computer support software (RT ToolBox mini) is preinstalled in the MELFA-Works CD-ROM. When MELFA-Works is installed, RT ToolBox mini is also installed automatically.



Operating Environment ///

Operating environment of MELFA-Works	Required	Recommended
CPU	Intel Pentium 4 or compatible processor of 2.0 GHz or higher	Intel® Pentium™, Intel Xeon™, AMD® Athlon, AMD Opteron or other processor of equivalent performance class
Main memory	512 MB or more	1024 MB or more
Graphic display	XGA (1024x768) or higher	SXGA (1280x1204) or higher, with graphic board installed
Hard disk	Available disk space of 1GB or more	
Disk drive	CD-ROM drive	
Pointing device	Any device that operates in the Microsoft Windows® environment, with wheel button	
Keyboard	PC/AT compatible keyboard	
Operating system	Microsoft Windows® 2000 Professional SP4, Microsoft Windows® XP Professional (32-bit) SP2	
3D-CAD 12	SolidWorks® 2004 SP4.1 or more, SolidWorks® 2005	
External application	GX Simulator Version7 3	

- ① SolidWorks® 2006 is not supported.
- ② Due to the design specifications of SolidWorks®, data created in a higher version of SolidWorks® cannot be transferred to a lower version of SolidWorks®.
- ③ Use this application when simulating I/O signals with ladders.

Operating environment of the calibration tool	Recommended
CPU	Intel Pentium4 or compatible processor of 1.0 GHz or higher
Main memory	256 MB or more
Graphic display	XGA (1024x768) or higher
Hard disk	Available disk space of 1GB or more
Disk drive	CD-ROM drive
Pointing device	Any device that operates in the Microsoft Windows® environment, with wheel button
Keyboard	PC/AT compatible keyboard
OS	Microsoft Windows® 2000, Microsoft Windows® XP Professional
3D-CAD	Not required

Note: The calibration tool can be operated independently of MELFA-Works.

EUROPEAN BRANCHES

MITSUBISHI ELECTRIC EUROPE B.V. CZECH REPUBLIC
Radlicka 714/113 a
CZ-158 00 Praha 5
Phone: +420 251 551 470

MITSUBISHI ELECTRIC EUROPE B.V. FRANCE
25, Boulevard des Bouvets
F-92741 Nanterre Cedex
Phone: +33 (0)1 / 55 68 55 68

MITSUBISHI ELECTRIC EUROPE B.V. GERMANY
Gothaer Straße 8
D-40880 Ratingen
Phone: +49 (0)2102 / 486-0

MITSUBISHI ELECTRIC EUROPE B.V. IRELAND
Westgate Business Park, Ballymount
IRL-Dublin 24
Phone: +353 (0)1 419 88 00

MITSUBISHI ELECTRIC EUROPE B.V. ITALY
Viale Colleoni 7
I-20041 Agrate Brianza (MI)
Phone: +39 039 / 60 53 1

MITSUBISHI ELECTRIC EUROPE B.V. SPAIN
Carretera de Rubi 76-80
E-08190 Sant Cugat del Vallés (Barcelona)
Phone: 902 131121 // +34 935653131

MITSUBISHI ELECTRIC EUROPE B.V. UK
Travellers Lane
UK-Hatfield, Herts. AL10 8XB
Phone: +44 (0)1707 / 27 61 00

EUROPEAN REPRESENTATIVES

GEVA AUSTRIA
Wiener Straße 89
AT-2500 Baden
Phone: +43 (0)2252 / 85 55 20

KOUVALIAS R + V SYSTEMS GREECE
25, El Venizelou Ave
GR-17671 Kallithea
Phone: +30 22950 / 42902/3/4

ELEKTROSTILY RUSSIA
Rubzovskaja nab. 4-3, No. 8
RU-105082 Moscow
Phone: +7 495 / 545 3419

Beijer Electronics AB SWEDEN
Box 426
SE-20124 Malmö
Phone: +46 (0)40 / 35 86 00

ILAN & GAVISH Ltd. ISRAEL
24 Shenkar St., Kiryat Arie
IL-49001 Petah-Tiqva
Phone: +972 (0)3 / 922 18 24

Koning & Hartman b.v. BELGIUM
Woluwelaan 31
BE-1800 Vilvoorde
Phone: +32 (0)2 / 257 02 40

AXICONT AUTOMATIKA KFT. HUNGARY
Reitter F. U. 132
HU-1131 Budapest
Phone: +36 (0)1 / 412-0882

CONSYS RUSSIA
Promyshlennaya st. 42
RU-198099 St. Petersburg
Phone: +7 812 / 325 36 53

Econotec AG SWITZERLAND
Hinterdorfstr. 12
CH-8309 Nürensdorf
Phone: +41 (0)44 / 838 48 11

CBI Ltd. SOUTH AFRICA
Private Bag 2016
ZA-1600 Isando
Phone: +27 (0)11 / 928 2000

AKHNATON BULGARIA
4 Andrej Ljapchev Blvd. Pb 21
BG-1756 Sofia
Phone: +359 (0)2 / 817 6004

Koning & Hartman b.v. NETHERLANDS
Haarlerbergweg 21-23
NL-1101 CH Amsterdam
Phone: +359 (0)2 / 817 6004

INEA SR d.o.o. SERBIA
Karadjordjeva 12/260
SER-113000 Smederevo
Phone: +381 (0)26 / 617 163

GTS TURKEY
Darulaceze Cad. No. 43 KAT. 2
TR-34384 Okmeydanı-Istanbul
Phone: +90 (0)212 / 320 1640

AutoCont C.S., s.r.o. CZECH REPUBLIC
Technologická 374/6
CZ-708 00 Ostrava Pustkovec
Phone: +420 (0) 59 / 5691 150

Beijer Electronics AS NORWAY
Postboks 487
NO-3002 Drammen
Phone: +47 (0)32 / 24 30 00

CS MTrade Slovensko s.r.o. SLOVAKIA
Vajanskeho 58
SK - 92101 Piestany
Phone: +421 (0)33 / 7742 760

CSC Automation Ltd. UKRAINE
15, M. Raskova St., Fl. 10, Office 1010
UA-02002 Kiev
Phone: +380 (0)44 / 494 33 55

B:TECH, a.s. CZECH REPUBLIC
U Borove 69
CZ-58001 Havlickov Brod
Phone: +420 (0)569 777 777

MPL Technology Sp. z o.o. POLAND
Ul. Krakowska 50
PL-32-083 Balice
Phone: +48 (0)12 / 630 47 00

INEA d.o.o. SLOVENIA
Stegne 11
SI-1000 Ljubljana
Phone: +386 (0)1 / 513 8100

Beijer Electronics A/S DENMARK
Lykkegårdsvej 17, 1.
DK-4000 Roskilde
Phone: +45 (0)46 / 75 76 66

Sirius Trading & Services ROMANIA
Aleea Lacul Morii Nr. 3
RO-060841 Bucuresti, Sector 6
Phone: +40 (0)21 / 430 40 06

Beijer Electronics OY FINLAND
Jaakonkatu 2
FIN-01620 Vantaa
Phone: +358 (0)207 / 463 500



Mitsubishi Electric Europe B.V. /// FA - European Business Group /// Gothaer Straße 8 /// D-40880 Ratingen /// Germany
Tel.: +49(0)2102-4860 /// Fax: +49(0)2102-4861120 /// info@mitsubishi-automation.com /// www.mitsubishi-automation.com

Specifications subject to change /// Art. no. 210298-B/// 09.2008

All trademarks and copyrights acknowledged.