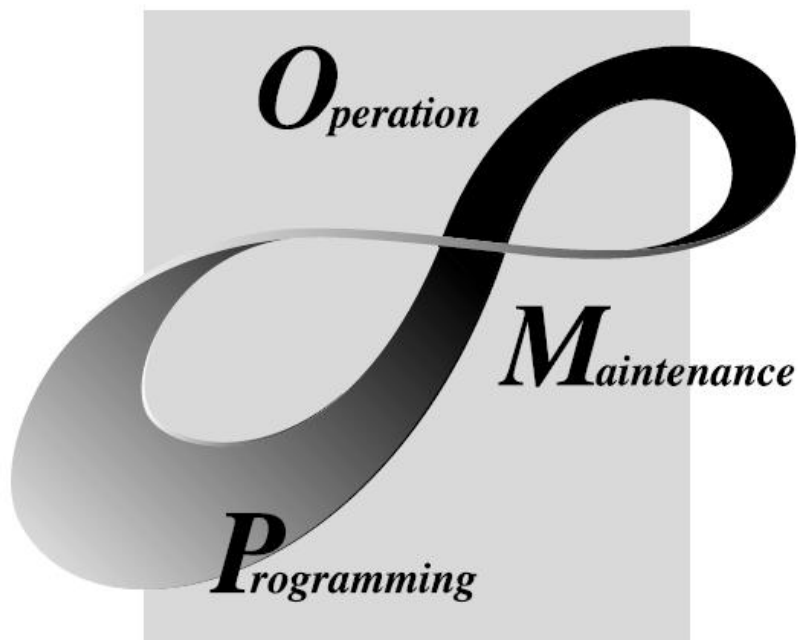


MX OPC Configurator

Quick Start Guide

mitsubishi



MELSOFT
Integrated FA Software

MX OPC Configurator

(C)2008 Mitsubishi FA-EDC

All rights reserved. No parts of this work may be reproduced in any form or by any means - graphic, electronic, or mechanical, including photocopying, recording, taping, or information storage and retrieval systems - without the written permission of the publisher.

Products that are referred to in this document may be either trademarks and/or registered trademarks of the respective owners. The publisher and the author make no claim to these trademarks.

While every precaution has been taken in the preparation of this document, the publisher and the author assume no responsibility for errors or omissions, or for damages resulting from the use of information contained in this document or from the use of programs and source code that may accompany it. In no event shall the publisher and the author be liable for any loss of profit or any other commercial damage caused or alleged to have been caused directly or indirectly by this document.

Printed: July 2008

INTRODUCTION

Thank you for choosing the Mitsubishi MELSOFT Series Integrated FA software.
Read this manual and make sure you understand the functions and performance of MELSOFT series thoroughly in advance to ensure correct use.

CONTENTS

1 Introduction to MX OPC Server	4
1.1 Compatibility with Former Versions	4
1.2 What Is OLE for Process Control	5
1.3 MX OPC Runtime	5
1.4 MX OPC Configurator	6
1.5 Installing MX OPC Server	6
1.5.1 System Requirements	6
1.5.2 Installation Procedure	7
1.5.3 Configuring the service	12
1.6 MX OPC Server Quick Start	14
1.6.1 Starting the MX OPC Configurator	15
1.6.2 Setting Up the Driver	16
1.6.3 Creating Communication Channels	17
1.6.4 Configuring a New Device	30
1.6.5 Creating Data Tags	32
1.6.6 Starting the MX OPC Runtime Driver	35
1.6.7 Connecting to the Server Using OPC DataSpy	36
Index	40

1 Introduction to MX OPC Server

The MX OPC Server 6.0 is a Mitsubishi I/O driver OPC Data Access (DA) and Alarm/Events (AE) server that provides the interface and communications protocol between a wide range of Mitsubishi hardware and your process control software. Mitsubishi drivers incorporate the following attributes to provide flexibility and ease-of-use:

OLE for Process Control (OPC) compliance.

The MX OPC Server consists of the following components:

- MX OPC Configurator
- MX Runtime

The MX OPC Server complies with version 3.00 of the OLE for Process Control (OPC) Data Access standard, version 1.01 of the OPC XML Data Access standard, and version 1.01 of the OPC Alarm and Events standard. Any OPC client application can access process hardware data through the I/O Server.

1.1 Compatibility with Former Versions

The MX OPC Server 6.0 is fully backward compatible with previous versions (4.20, etc.). The configuration databases from all previous versions can be used. The MX OPC Server 6.0 Configurator provides an automated conversion from the older configuration database into the current structure. All the database content will be preserved and converted into the new structure if needed.

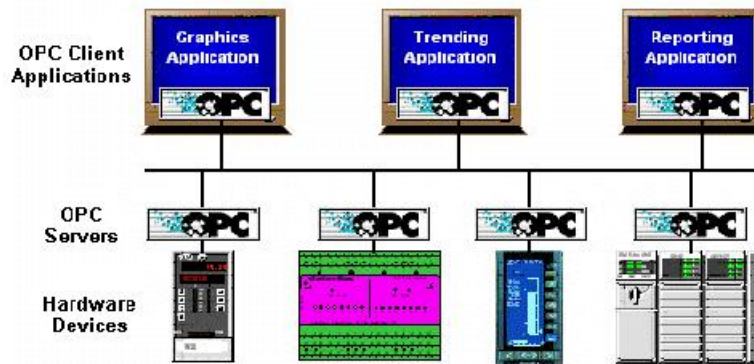
The MX OPC Server 6.0 configuration database cannot be used in the previous versions.

The MX OPC Server does not support importing of CSV configurations generated by a different version. Although this process is partially successful in some versions, the 6.0 version will not import a CSV file created before version 6.0 due to major changes in the database structure.

To preserve the configuration, the user can import the CSV file to a MDB database using the original configurator, upgrade the MDB database using the MX OPC Server 6.0 configurator and then export to CSV.

1.2 What Is OLE for Process Control

OLE™ for Process Control (OPC) is a standards-based approach for connecting data sources (e.g., PLCs, controllers, I/O devices, databases, etc.) with HMI client applications (graphics, trending, alarming, etc.). It enhances the interface between client and server applications by providing a universally supported and well-documented mechanism to communicate data from a data source to any client application. Included are not only a detailed guide on how to pass the data, but also specific information on other attributes to supplement those data, such as range information, data type, quality flags, and date and time information. The figure below shows the OPC Architecture, which was introduced by the OPC Foundation. By following the OPC Architecture, a device needs only one standard driver, which is an OPC-compliant server. All OPC-compliant client applications can then be connected to that device, either locally or over a network. Furthermore, connections can be made to more than one OPC server at the same time.



OPC-Based Client-Server Architecture

Any OPC client application can connect to any OPC server. In other words, OPC offers true Plug-and-Play capability in the fields of HMI and industrial automation. OPC server types include OPC Data Access (DA), OPC Alarm and Events (AE), and OPC Historical Data Access (HDA).

1.3 MX OPC Runtime

The MX OPC Runtime maintains the driver's communication channels, devices, and data tags, performs all required functions for communicating with the process hardware, and exposes the methods and properties to other applications.

In addition to performance improvements, the MX OPC Runtime provides the following functionality:

- Supports OLE for Process Control (OPC)
- Provides local configuration and control
- Supports telephone modem communication
- Provides phasing
- Enables or disables Individual devices and tags
- Provides QuickFail Logic
- Provides latched data
- Provides a time/date stamp for data and alarms
- Supports array element and individual bit reads
- Provides advanced diagnostics.
- MX Component.

1.4 MX OPC Configurator

The I/O Driver Configurator is a client application to the I/O Server with a graphical user interface. The MX OPC Configurator accesses the I/O Server and lets you view and modify properties of communication channels, devices and data tags.

The MX OPC Configurator provides the following:

- The server connection - only local I/O Server.
- The tree control for an overall view of your system configuration.
- A Statistics View for displaying the statistics of your I/O driver while it is running. Statistics are provided for devices.
- A Configuration View for displaying and modifying device and tag properties.
- A Monitor View for displaying real-time data tag values during runtime mode.
- An interface to the MXComponent Communication Setting Wizard for importing or creating new configurations.

- Support for telephone modem communication.
- Templates for configuring default alarm settings.
- Simulation for tags and alarms using a built-in function pattern.

1.5 Installing MX OPC Server

This section describes the steps for installing the MX OPC Server. Be sure to close any other applications before installing MX OPC Server.

There are two separate parts to the software:

- The MX OPC runtime module, which reads data from the device
- The MX OPC configurator, which defines the data to be read

The MX OPC Server runtime module can optionally be installed as a service. Services run automatically in the background whenever the computer is started; they do not rely on a user logging in to the computer to start the program manually.

1.5.1 System Requirements

To use MX OPC Server 6.0, your computer must meet the following minimum system requirements:

- 233 MHz processor
- 512 MB RAM
- 100 MB disk space
- 8x speed CD-ROM drive
- VGA video card (256 or more colors for best results)
- Microsoft® Windows® 2000 with Service Pack 3, Windows XP with Service Pack 2, Windows 2003 Server, Windows Vista, Windows NT® 4.0 with Service Pack 6a, or Windows Embedded NT and XP.

Performance will improve with higher specification hardware (faster data updates).

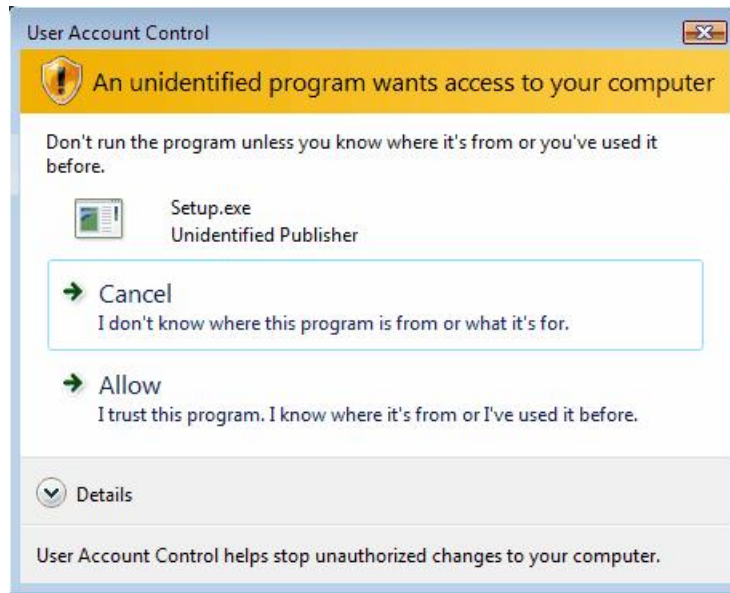
Note: Only versions of Microsoft Windows that accommodate Unicode character sets are supported.

1.5.2 Installation Procedure

The following steps detail the MX OPC Server installation:

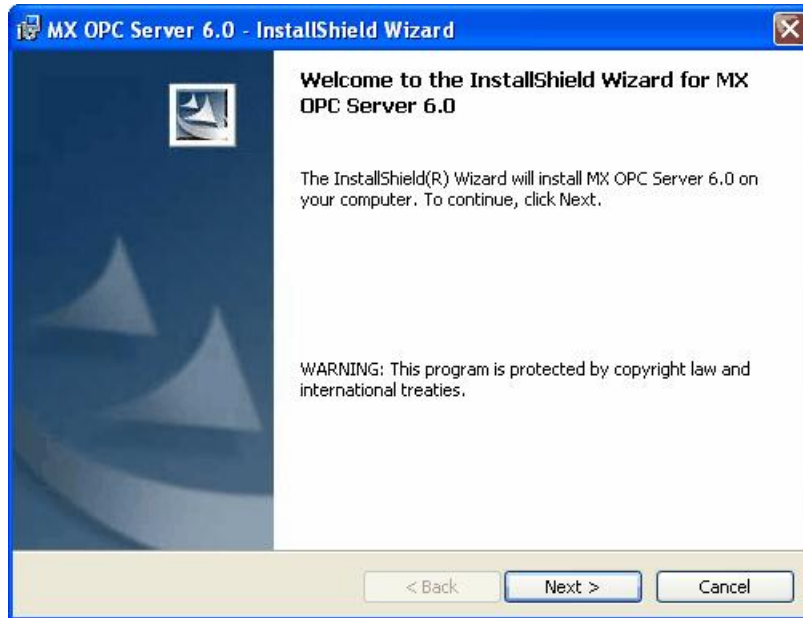
Note: If your operating system (e.g., Windows NT) requires a login name, you must log in with administrator capability before installing MX OPC Server.

1. Before installing the software, be sure that all other applications are closed and/or disabled.
2. Insert the product CD into your CD-ROM drive. If the option to start CDs automatically is enabled in your operating system, the CD introduction starts automatically. Otherwise, browse to your CD-ROM drive and run the program "Setup.exe".
3. If you are installing on Windows Vista, you may see a warning prompt similar to the one below. Click **Allow** to continue the installation.



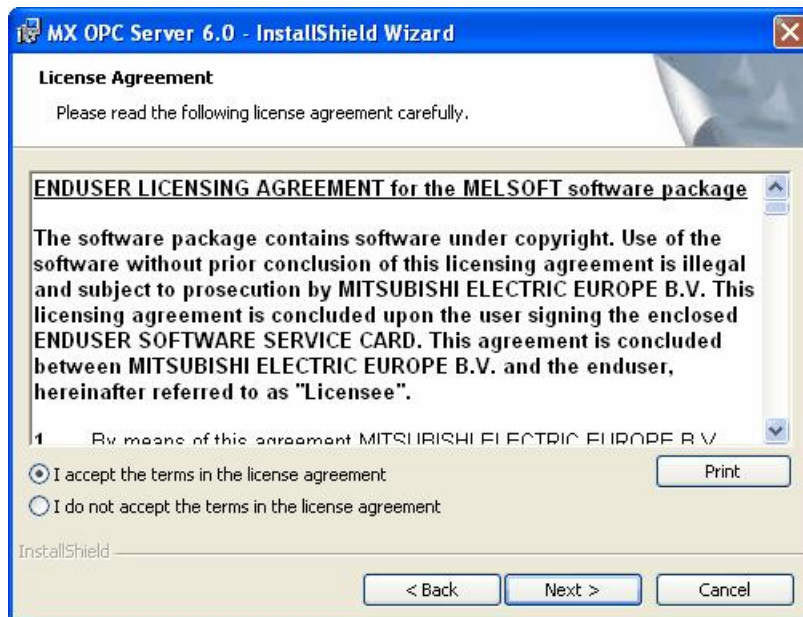
Vista account control prompt

- 4. The Setup screen briefly appears, followed by the Welcome screen, as shown in the figure below. Click the Next button to continue.



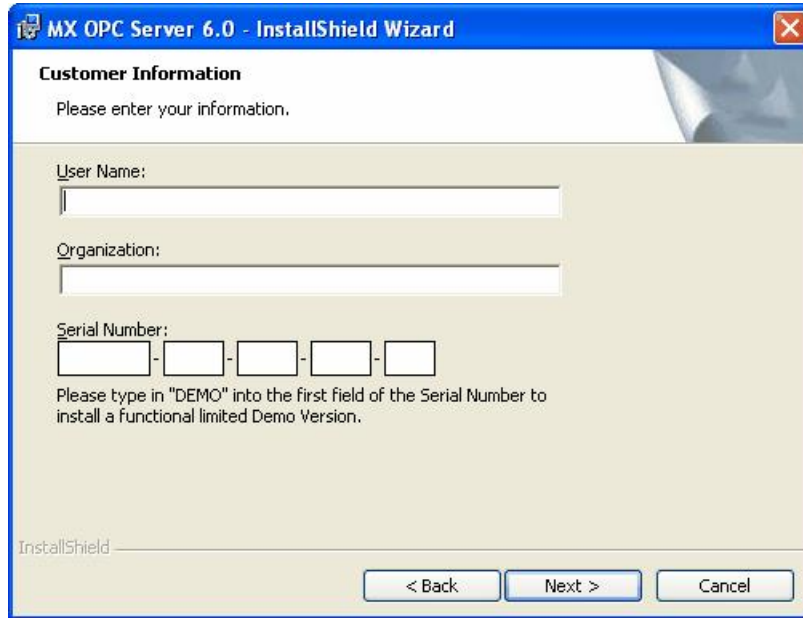
Welcome Screen

- 5. The **Software License Agreement** dialog box appears, as shown in the figure below. Read the License Agreement. Click **Next** if you accept the terms of the agreement.



Software License Agreement

- 6. The **Customer Information** dialog box appears, as shown in the figure below. Enter your name, your company's name, and your product serial number. Click **Next** to continue, and confirm your registration information.



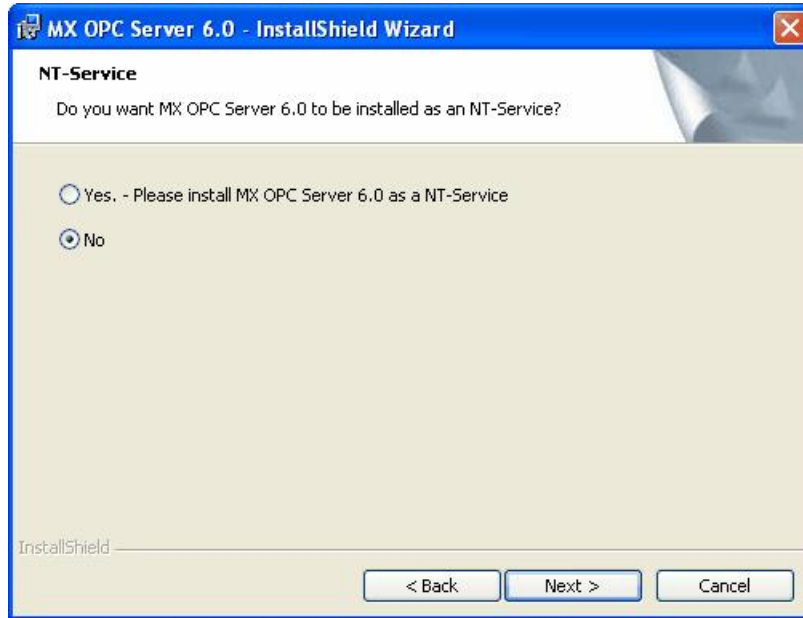
Entering Customer Information

- 7. The **Choose Destination Location** dialog box appears, as shown in the figure below. Choose the destination location for the software installation. If you wish to keep the default location, click the **Next** button to continue. If you prefer to select a different directory location for the installation, click the **Change** button to select a different drive or directory. Click **Next** to continue.



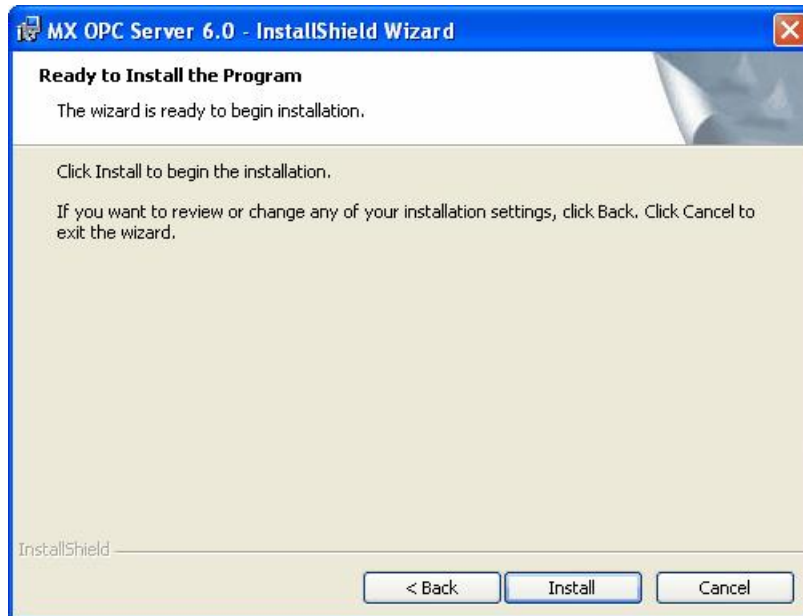
Choosing the Destination Location

- 8. The **Setup Type** dialog box appears, as shown in the figure below, giving you the option to install MX OPC Server as a Windows service. Select **Yes** or **No**, and then click the **Next** button to continue.



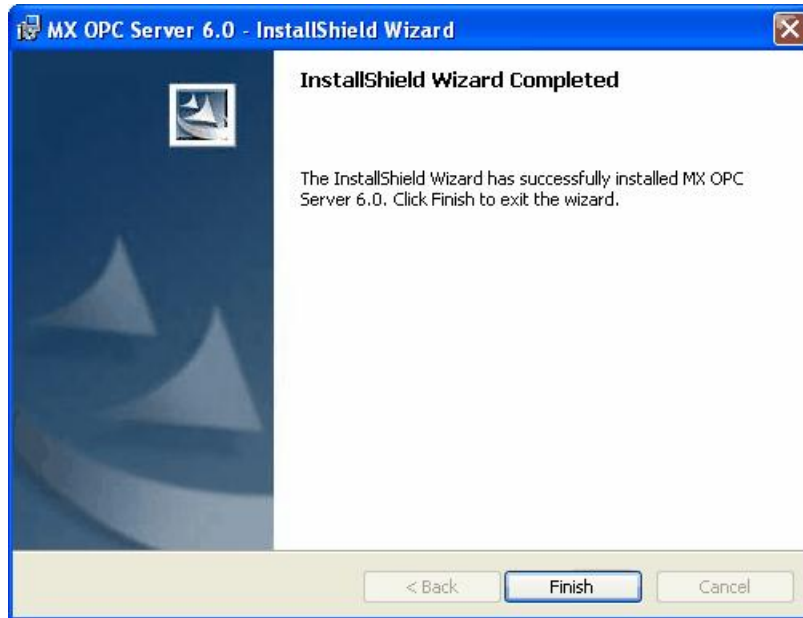
Option to Run MX OPC Server as a Service

- 9. Click **Install**, as shown in the figure below, to begin installing the files. MX Component, EasySocket and MXChange server will also be installed.
Note: You can click **Cancel** to stop the installation procedure at any time.



Starting File Installation

- 10. After all files and components have been installed, click the **Finish** button to complete the installation, as shown in the figure below. If you installed MX OPC server as a service, you will also be given the option to configure the service immediately. After choosing whether to configure the service now or later, click the **Finish** button.



Installation Complete

- 11. You may be prompted to restart your computer before using the product. If a prompt similar to the one below is shown, either select **Yes** to restart immediately (and force all other running applications to close) or **No** to close other applications and restart manually.

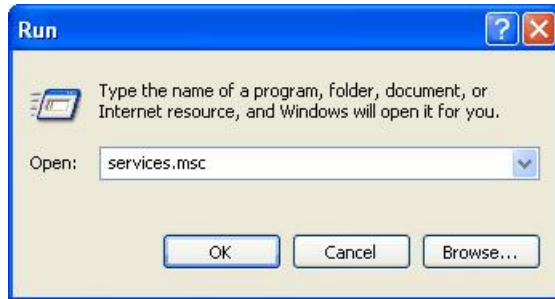


Restart prompt

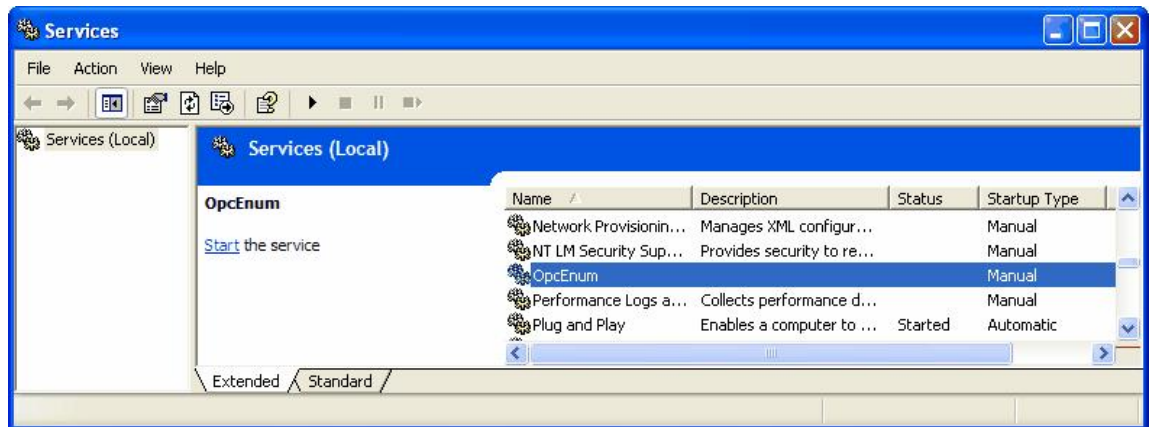
1.5.3 Configuring the service

When the OPC server is installed as a service, it can be useful to configure it to run using a specific user account. The 'OPC enumeration' EXE is also installed as a service. In this section, the 'OPC enumeration' EXE will be used as an example, but the same method applies when the OPC server settings are changed.

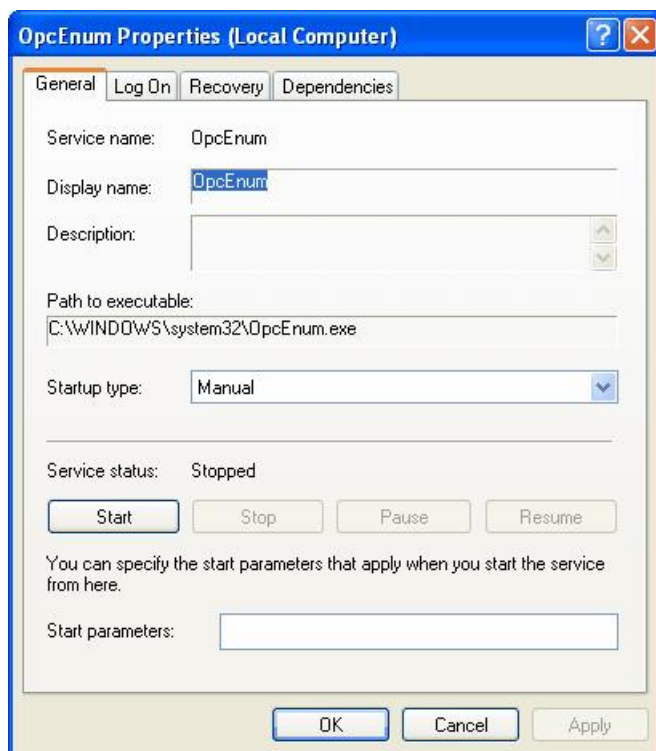
To open the 'services' page, select 'Start' -> 'Run', enter 'Services.msc' in the dialog that appears and click 'OK'.



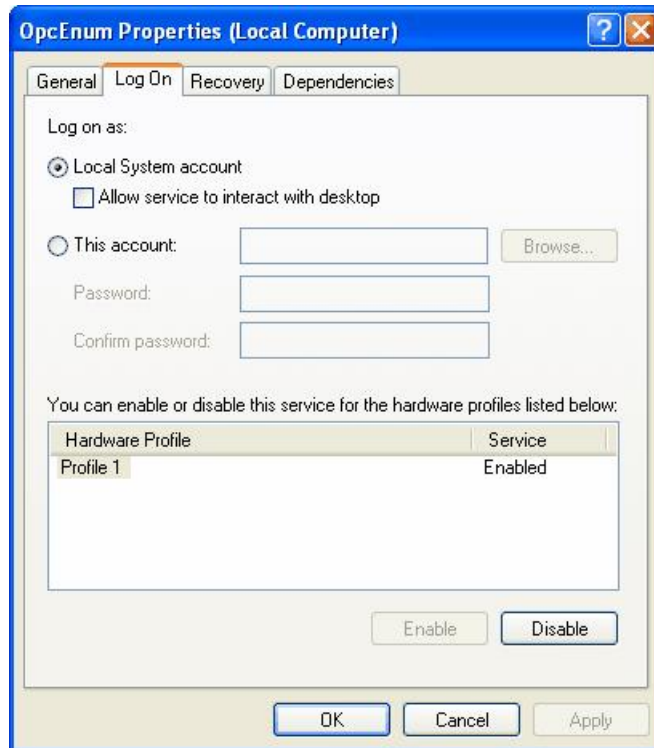
Find the service to be changed in the list. The sample screen below shows the OPC enumeration service.



Right click on the service name and select 'Properties'. The service configuration screen (below) will be shown.



Switch to the 'Log On' tab, select 'This account' and enter the username and password of the user to run as.



Now select 'OK' and close the services window.

1.6 MX OPC Server Quick Start

The objectives of this Quick Start section are to:

1. Start the MX OPC Configurator.
2. Set up the driver.
3. Set up a communication channel.
4. Create and configure a new device.
5. Create and configure a new data tag.
6. Start the I/O Server driver.
7. Connect to the server using OPC DataSpy.

1.6.1 Starting the MX OPC Configurator

Once you have installed MX OPC Server, start the MX OPC Configurator:

1. From the Windows Start menu, select **Programs > Melssoft Application > MX OPC Server 6.0 > MX OPC Configurator**.
Note: The name of the program folder may vary depending on your local settings (e.g. language settings).
2. This opens the Configurator for the MX OPC Server, as shown in the figure below. The screen consists of a split window with a tree control view in the left-hand pane and a configuration view in the right-hand pane. The Configurator provides a default standard configuration database called MXConfigurator.mdb, which contains a sample configuration project.



Configurator Screen

The MX OPC Configurator is a client of the MX OPC Runtime that accesses the I/O Server and lets you view and modify properties for devices and data tags. The Address Space tree control in the Configurator sets the properties and connection parameters for the following hierarchy of server objects:

- **Devices:** A device is a hardware device or station that uses the I/O driver to communicate with a client PC. The device item contains the properties and methods that govern the behavior of a device. A device is visible to the OPC client.
- **Data tags:** A data tag is an object that makes device data accessible to OPC clients. Data tags can be logically organized into groups (folders).

1.6.2 Setting Up the Driver

The table below provides a general overview of the steps necessary for setting up your I/O driver.

1 Know your process hardware:

- What device does the driver communicate with?
- What type of cable are you using?
- What is the station number for each device?
- What addresses do you want to access and what data do you want to retrieve?

2 Know the hardware parameters:

Example for serial communication

- COM Port
- Baud Rate
- Stop Bits
- Data Bits
- Parity

3 Choose the method of configuration:

Use the MX OPC Configurator

4 Configure the I/O Driver:

Configuring Communication Channels

Configuring devices

Setting default values for driver, channels, devices and tags

Configuring tags

5 Check the I/O Driver Status:

Using monitoring mode

1.6.3 Creating Communication Channels

In the following examples, we will create and configure new channels for both the Serial and Ethernet communication paths.

Serial Communication Channel

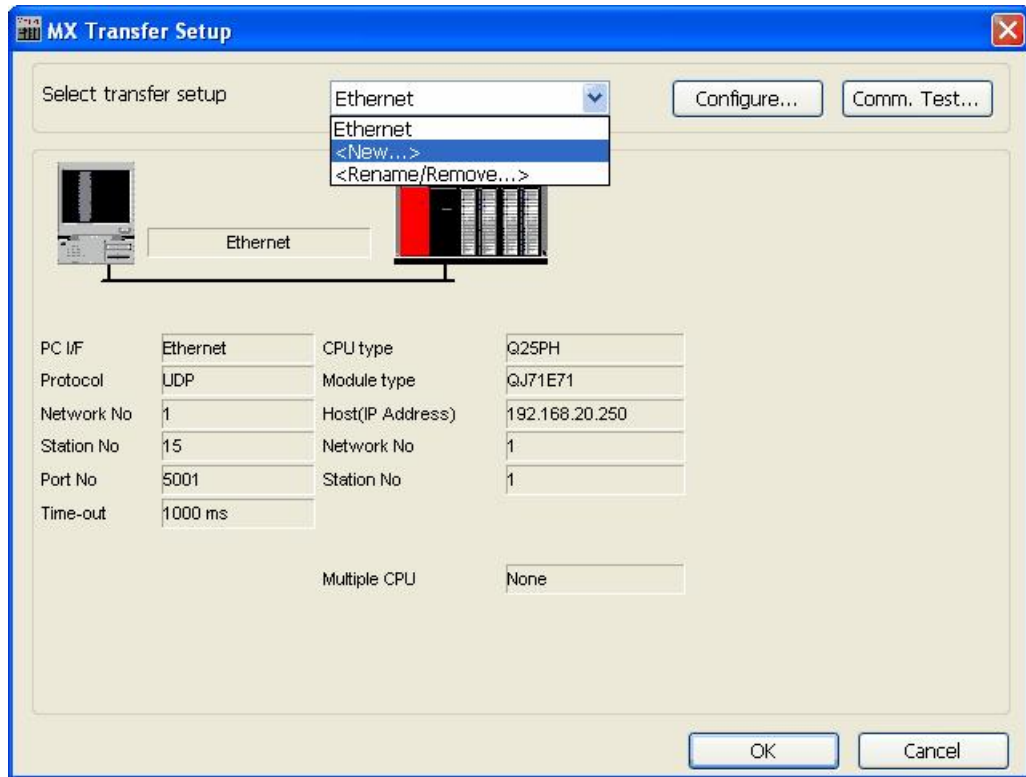
To create a new Serial communication path:

1. Right-click the Address Space tree control of the Configurator screen and select **New MX Device** from the pop-up menu, as shown in the figure below.



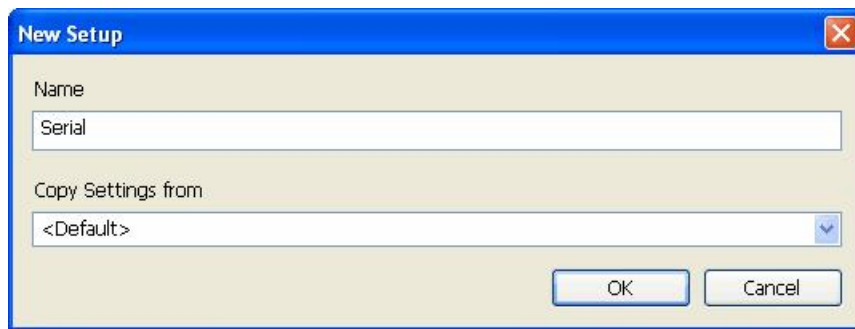
Adding a New MX Device

- The **MX Transfer Setup** dialog will be shown. You can either select an existing transfer setup, or (as in the example below) select *<New...>* to create a new transfer setup.



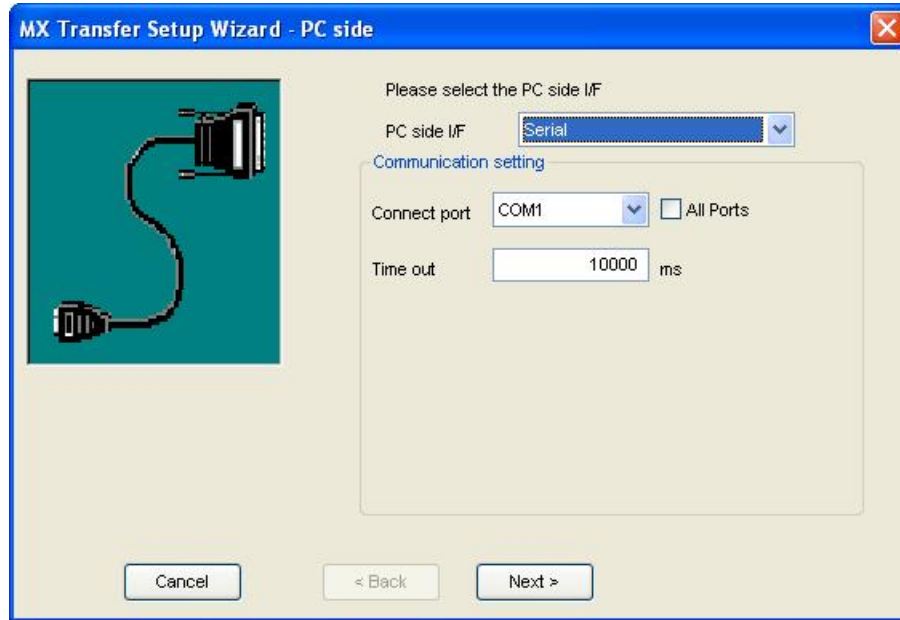
MX Transfer Setup dialog

- The **New Transfer Setup** dialog will appear. Enter a name for the new transfer setup (*Serial* in the picture below) and select *<Default...>* as the template, then click **OK**.



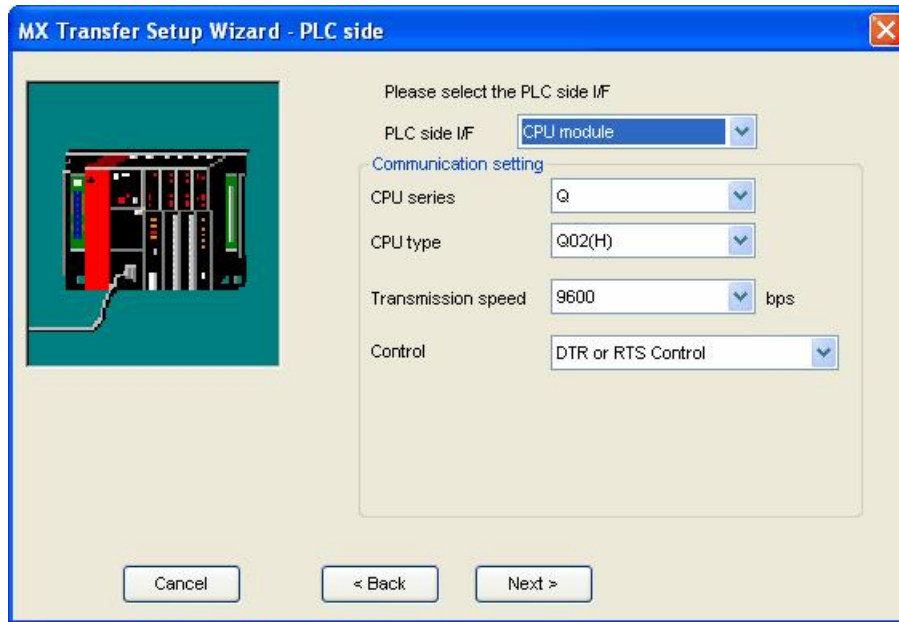
Entering a transfer setup name

- 4. The new transfer setup can now be edited using the **Communication Setting Wizard**, as shown in the figure below. Specify the communication type to use on the PC side, as shown in the figure below. In the **PC Side I/F** field, select the **Serial** connection type from the drop-down list. By default, you will only see the physical COM ports that are actually available on your computer. If you are preparing a configuration to be used on another computer which has different COM ports, check the **All ports** box to show a full list of possible serial ports. After entering the details, click **Next** to continue.



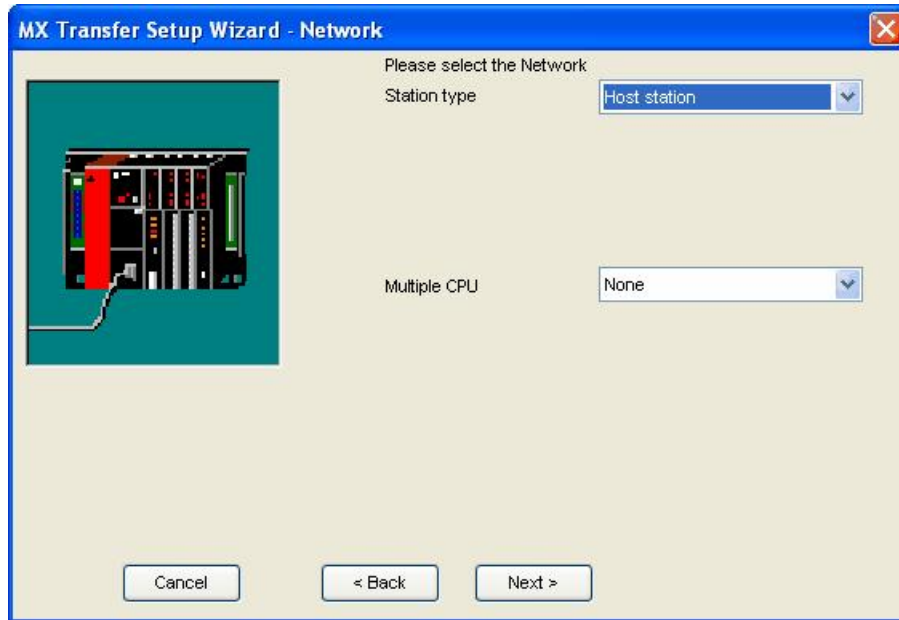
Setting up a Connection for the PC Side

- 5. Now you must specify the communication type to use on the PLC (device) side, as shown in the figure below. In the **PLC Side I/F** field, select a communication type from the drop-down list as the connection type to use for the selected channel. Click **Next** to continue.



Setting up the Connection for the PLC Side

- 6. Select the network **Station Type** and **CPU Type** (if applicable) from the respective drop-down lists, as shown in the figure below. Click **Next** to continue.



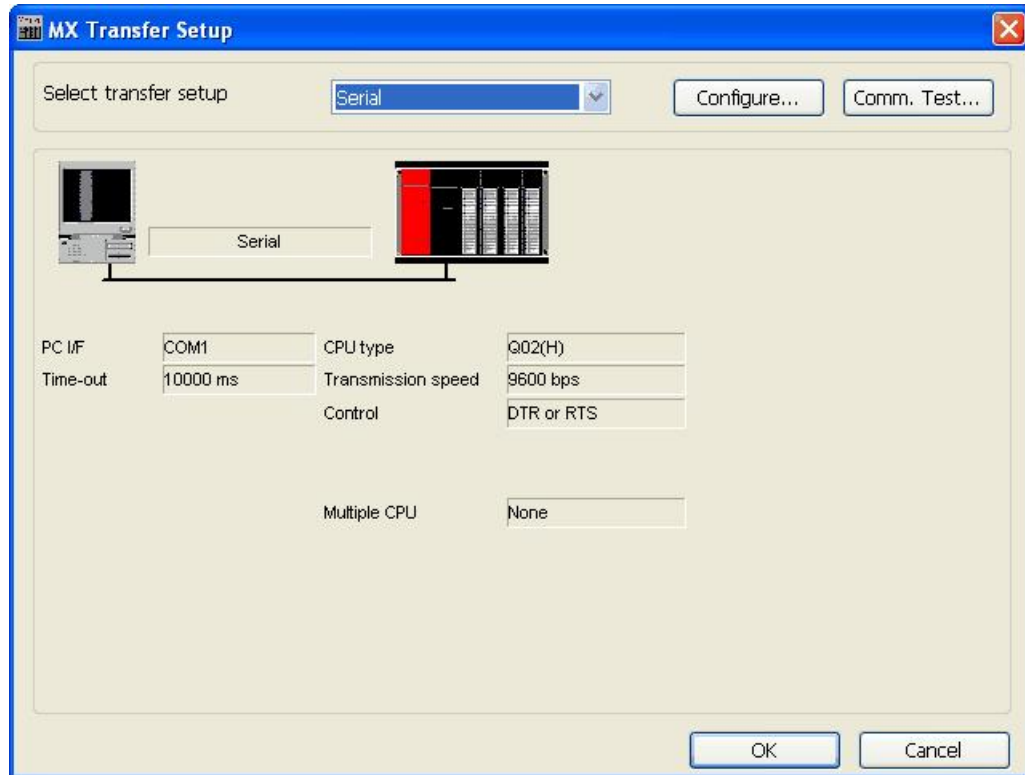
Configuring Network Settings

- 7. Click the **Finish** button to complete the communication channel setup, as shown in the figure below.



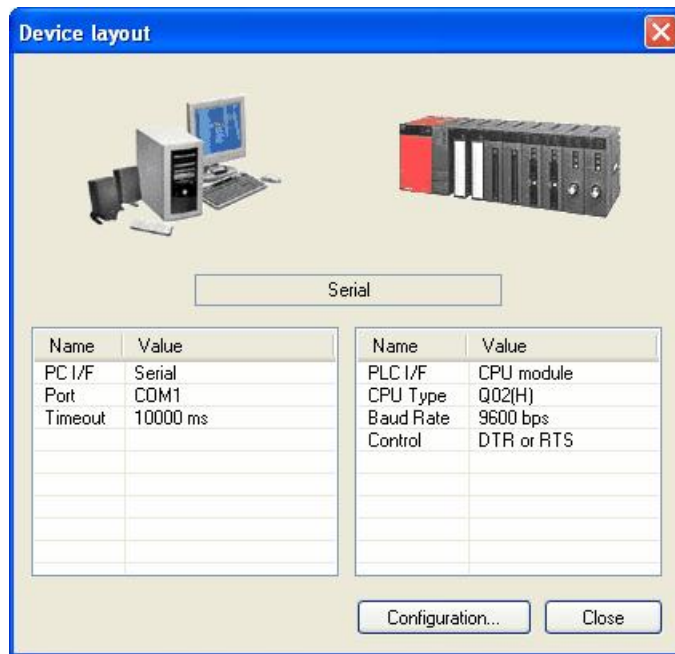
Completing Channel Setup

8. The **MX Transfer Setup** dialog box appears with the new transfer setup selected, as shown in the figure below. Each network node is shown graphically, with the node properties shown under the graphic. The left-hand side of the dialog lists the configuration properties for the PC side. You can double-click the image of a node (or double-click the properties list) to edit the configuration properties. The right-hand side of the dialog lists the configuration properties for the PLC device side. You can double-click the image of the PLC device (or double-click the configuration properties list) to edit the PLC device side configuration properties. You can also click the **Configure** button to return to the **Communication Setting Wizard**. Click the **OK** button to save the changes.



MX Transfer Setup dialog (configured)

9. The **Device Layout** dialog box appears, as shown in the figure below. You can either click the **Configuration** button to return to the **MX Transfer Setup** dialog, or click the **Close** button to finish.



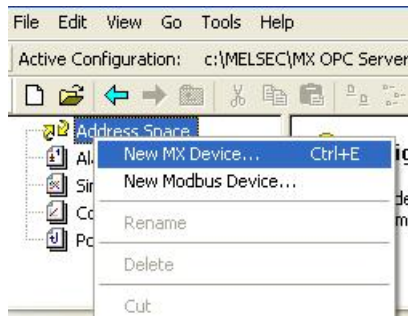
Device Layout

Note: For complete information about channel configuration properties and the **Communication Setting Wizard**, see "Configuring the address space" in the user documentation.

Ethernet Communication Channel

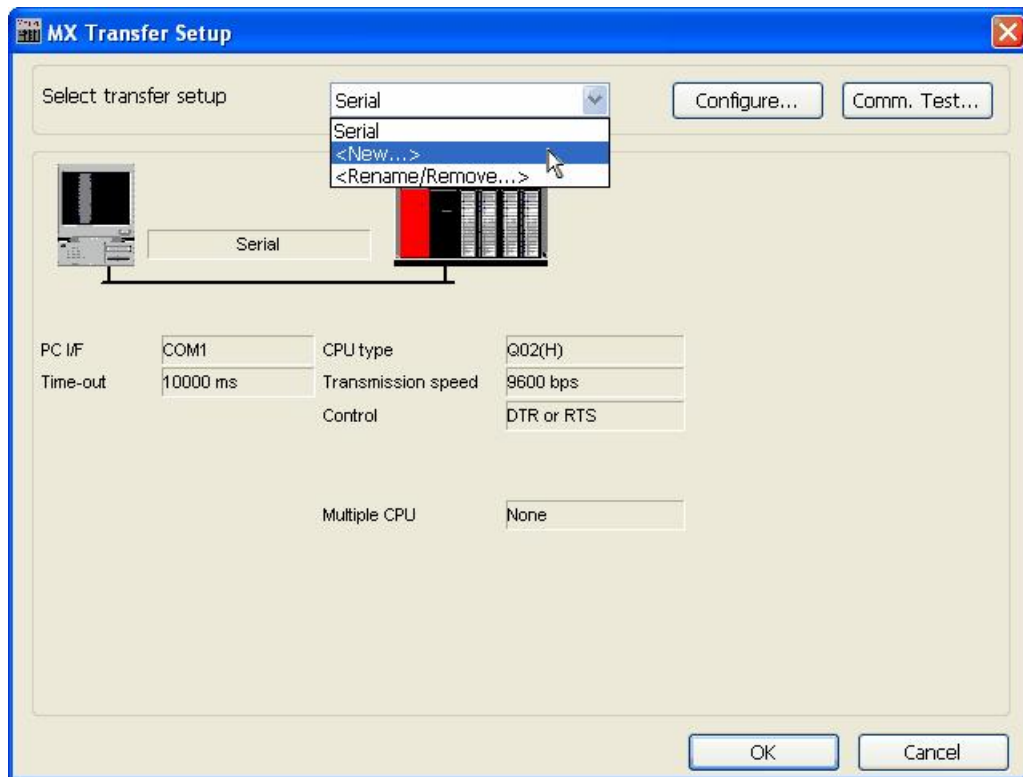
To create a new Ethernet communication path:

1. Right-click the **Address Space** tree control of the Configurator screen and select **New MX Device** from the pop-up menu, as shown in the figure below.



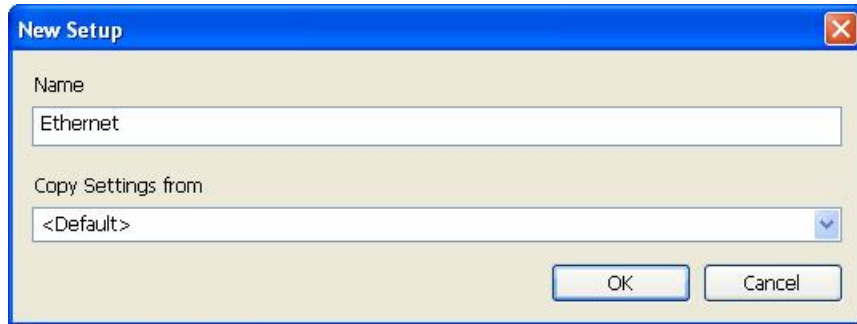
Adding a New MX Device

2. The **MX Transfer Setup** dialog will be shown. You can either select an existing transfer setup, or (as in the example below) select **<New...>** to create a new transfer setup.



MX Transfer Setup dialog

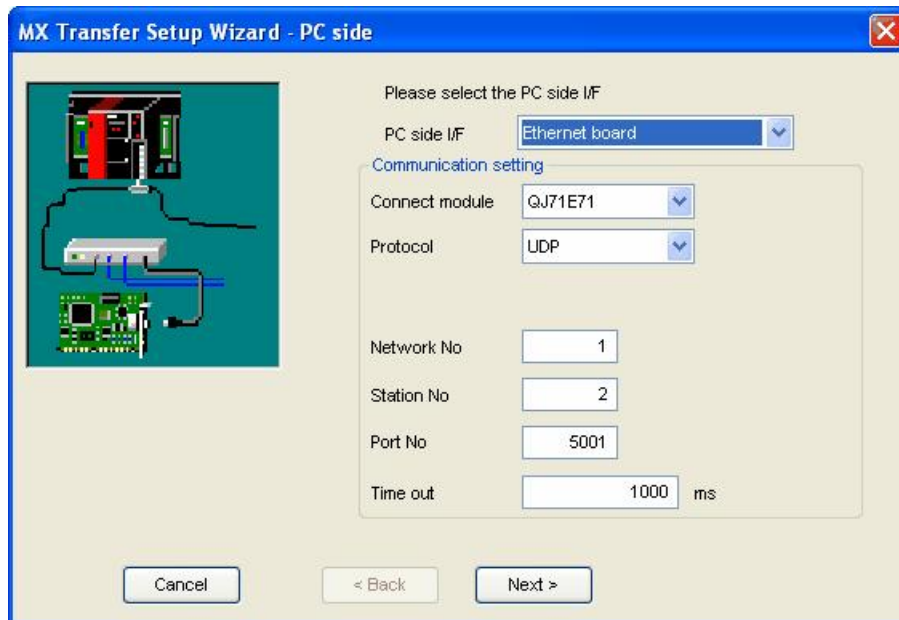
3. The **New Transfer Setup** dialog will appear. Enter a name for the new transfer setup (*Ethernet* in the picture below) and select *<Default...>* as the template, then click **OK**.



Entering a transfer setup name

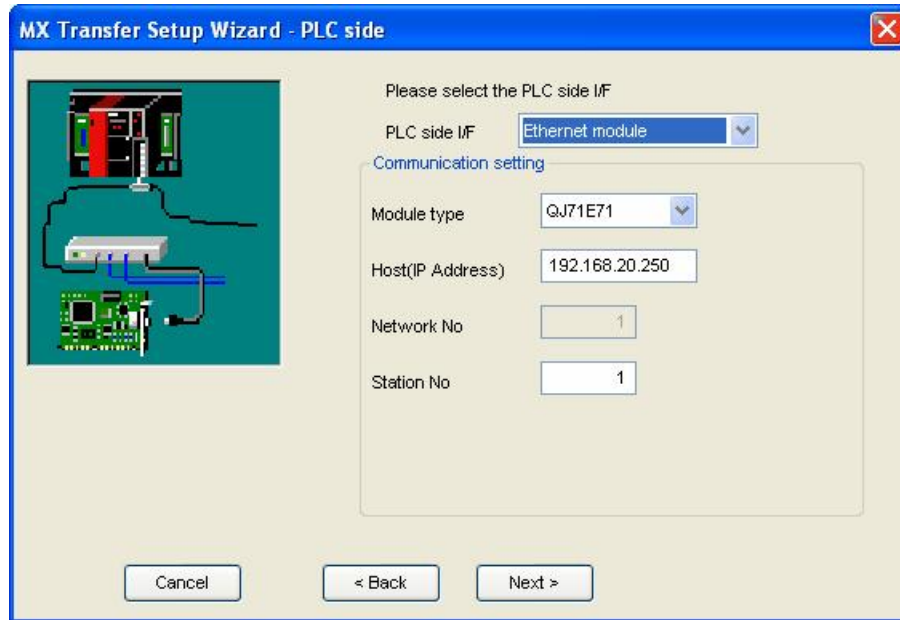
4. The new transfer setup can now be edited using the **Communication Setting Wizard**, as shown in the figure below. Specify the communication type to use on the PC side, as shown in the figure below. In the **PC Side I/F** field, select the **Ethernet board** connection type from the drop-down list. Select a module number from the **Connect module** drop-down list. Click **Next** to continue.

Note: For a list of supported devices, please see "Supported PLC Devices and Communication Paths" in the user documentation section "Configuring the address space".



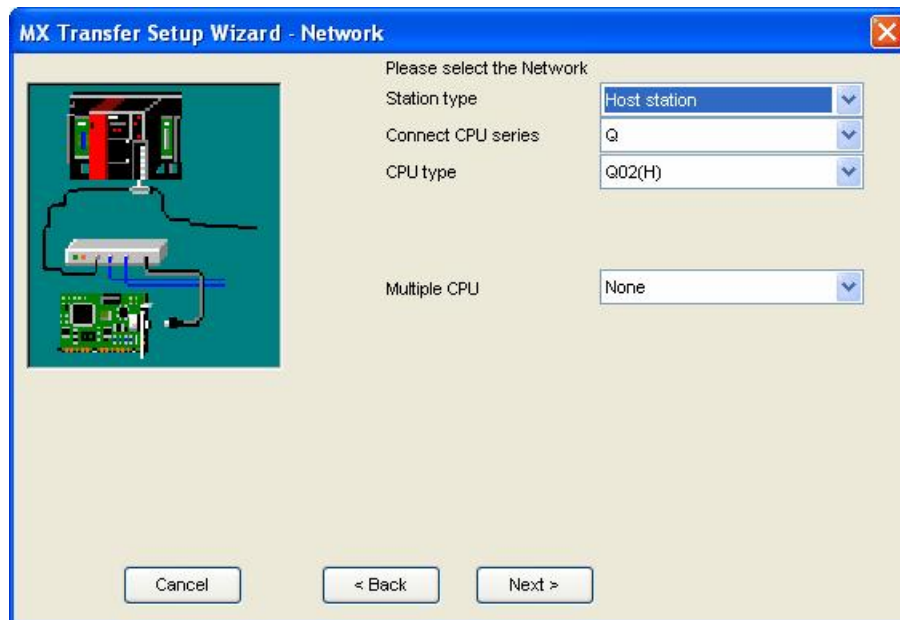
Setting up the Connection for the PC Side

- Now you must specify the communication type to use on the PLC (device) side, as shown in the figure below. In the **PLC Side I/F** field, select **Ethernet module** from the drop-down list as the connection type to use for the selected channel. Specify a Host name and a Port number. Click **Next** to continue.



Setting up the Connection for the PLC Side

- Select the network **Station Type** and **CPU Type** (if applicable) from the respective drop-down lists, as shown in the figure below. Click **Next** to continue.



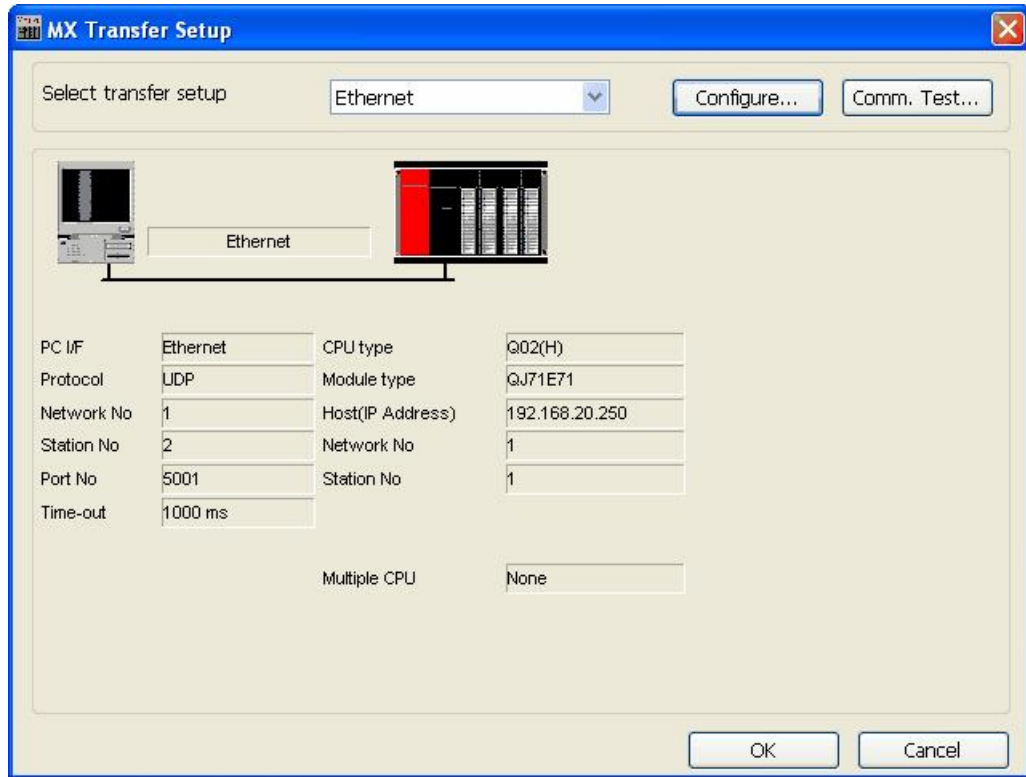
Configuring Network Settings

7. Click the **Finish** button to complete the communication channel setup, as shown in the figure below.



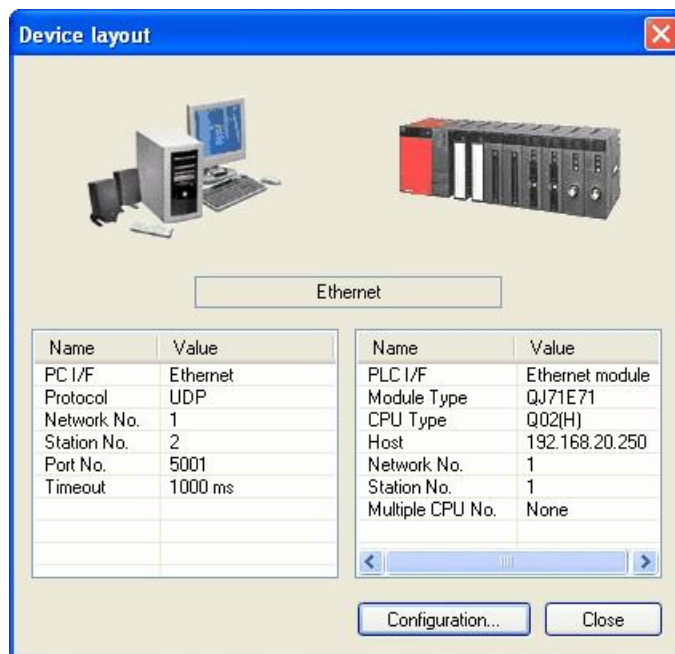
Completing Channel Setup

8. The **MX Transfer Setup** dialog box appears with the new transfer setup selected, as shown in the figure below. Each network node is shown graphically, with the node properties shown under the graphic. The left-hand side of the dialog lists the configuration properties for the PC side. You can double-click the image of a node (or double-click the properties list) to edit the configuration properties. The right-hand side of the dialog lists the configuration properties for the PLC device side. You can double-click the image of the PLC device (or double-click the configuration properties list) to edit the PLC device side configuration properties. You can also click the **Configure** button to return to the **Communication Setting Wizard**. Click the **OK** button to save the changes.



MX Transfer Setup dialog (configured)

9. The **Device Layout** dialog box appears, as shown in the figure below. You can either click the **Configuration** button to return to the **MX Transfer Setup** dialog, or click the **Close** button to finish.



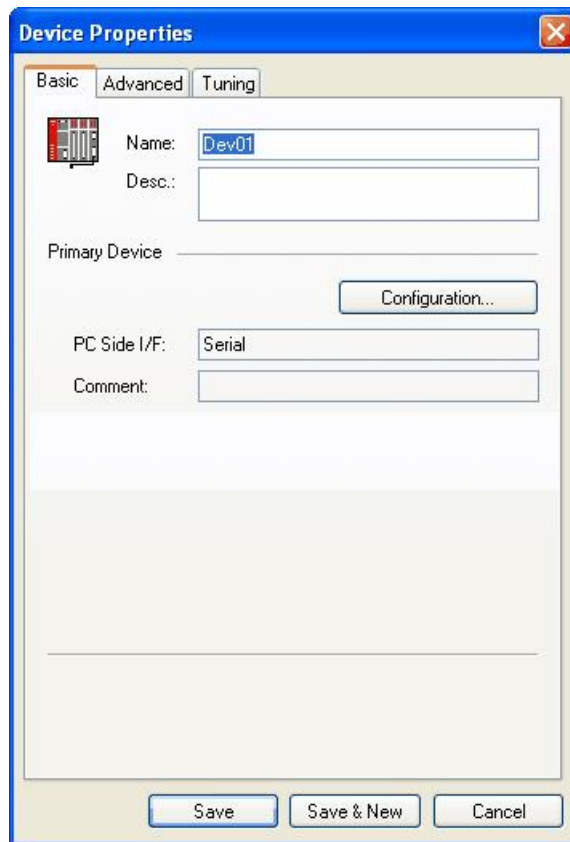
Device Layout

Note: For complete information about channel configuration properties and the Communication Setting Wizard, see "Configuring the address space" in the user documentation.

1.6.4 Configuring a New Device

In the previous section, we used the **Communication Setting Wizard** to set up Serial and Ethernet communication channels between the PC and PLC. Once you have completed the wizard:

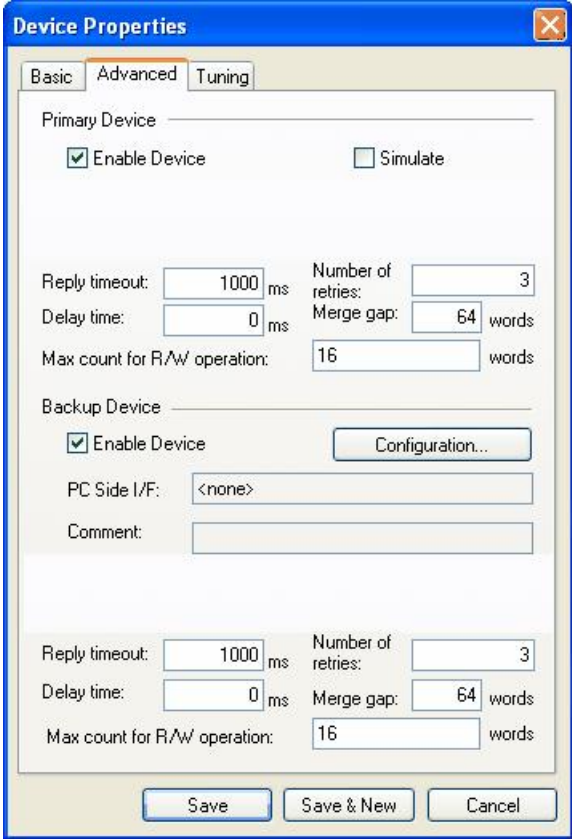
1. The **Basic** tab of the **Device Properties** dialog box appears, as shown in the figure below. The communication type (e.g. Serial, Ethernet, etc.) is shown in the **PC Side I/F** field, as shown in the figure below.



Configuring Device Properties

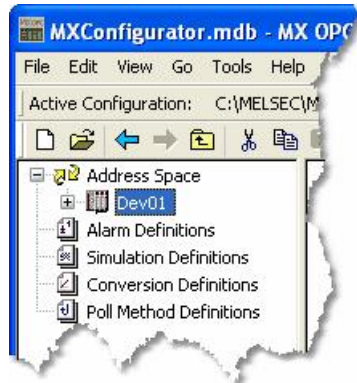
2. In the **Name** field, type a name for the new device, and type a description for the device (optional). To specify which connection type and which physical connection (COM) port to use for the selected device, click the **Configuration** button to launch the Communication Setting Wizard for the Primary device.

- 3. Click on the **Advanced** tab to set the advanced parameters for the **Primary** and **Backup** devices, as shown in the figure below.



Device Properties: Advanced Tab

4. Check the **Enable Device** check box to activate the device.
Note: For complete information about device configuration properties, see "Configuring the address space" in the user documentation.
5. When you have finished configuring the device properties, click the **Save** button. The new device appears under the **Address Space** tree control, as shown in the figure below.



New Device Created for the Channel

Note: For complete device configuration properties info, see "Configuring the address space" in the user documentation.

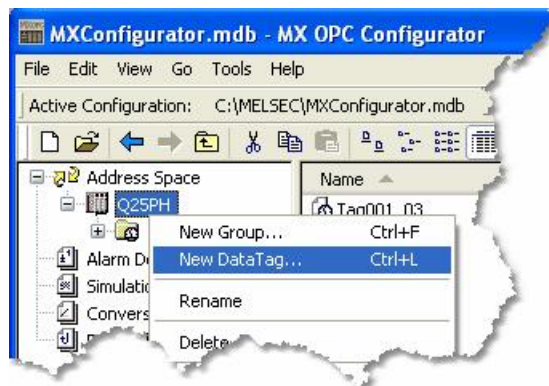
1.6.5 Creating Data Tags

Now you can create a new data tag that the OPC clients can request from the server.

Note: Data tags can be logically organized into **groups** (folders). You can configure as many folders as required. You can even create subfolders for each group to create a hierarchical organization of tags. See "Groups" in the user documentation section "Configuring the address space" for details.

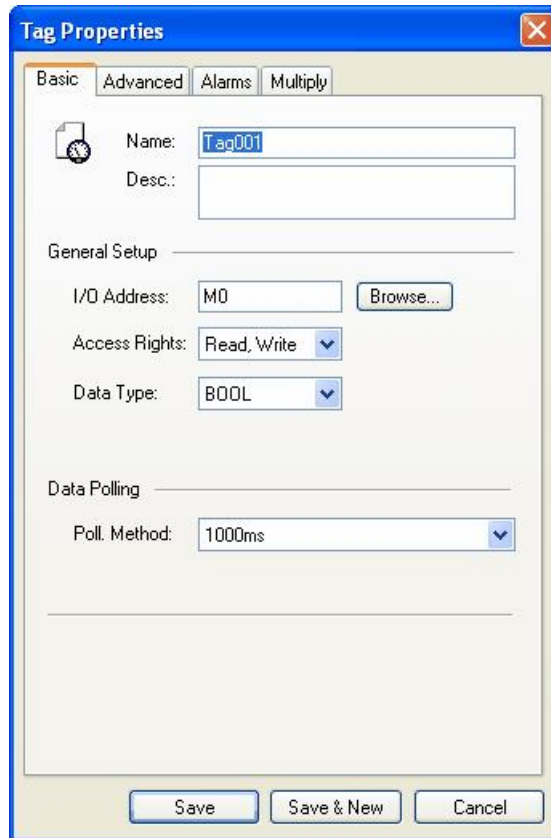
To create a new tag:

1. Right-click on a device in the tree control of the Configurator screen and select **New Data Tag** from the pop-up menu, as shown in the figure below.



Adding a New Data Tag

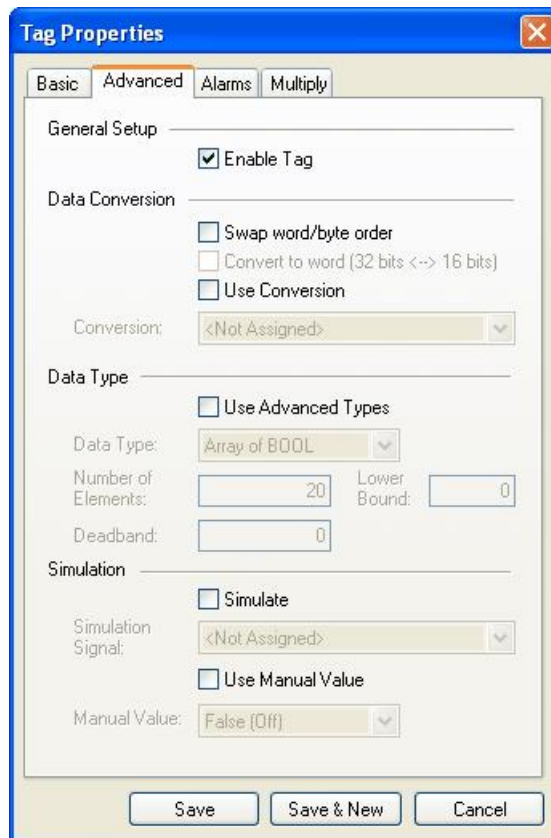
2. The **Basic** tab of the **Data Tag Properties** dialog box appears, as shown in the figure below.



Configuring Data Tag Properties

3. In the **Name** field, type a name for the new tag, and type a description for the tag (optional).
4. Set the parameters for the **I/O Address** and data **Access Rights**.

5. Click on the **Advanced** tab. Check the **Enable Tag** check box to activate the tag.



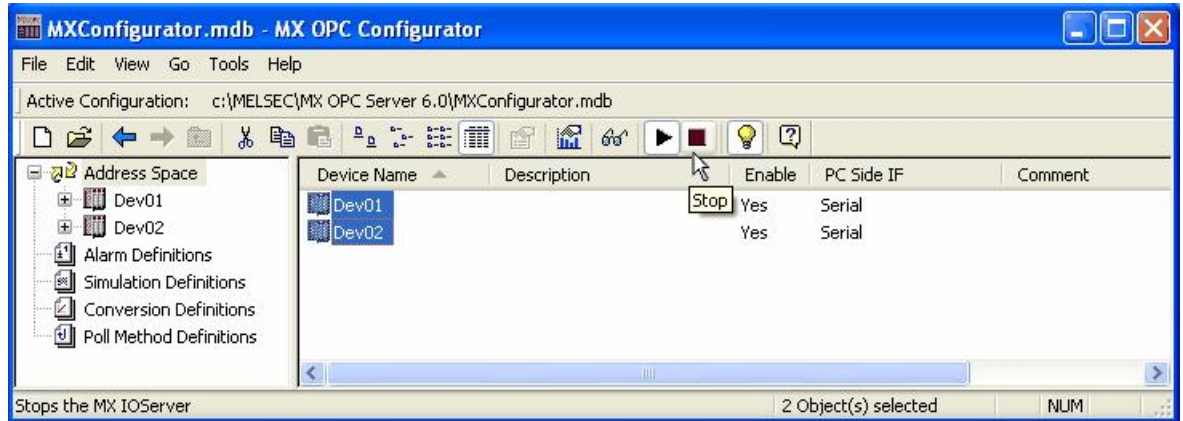
Data Tag Properties: Advanced Tab

6. Set the **Data Conversion** and **Data Type** parameters for the tag.
7. In the **Alarms** tab of the **Tag Properties** dialog box, you can check the **Generate Alarms** check box to make the server generate a limit alarm and/or a digital alarm based on the data item value.
8. When you have finished configuring the tag properties, click the **Save** button. The new tag appears under the **Device** tree control.

Note: For complete information about data tag configuration properties, see "Data tags" in the user documentation section "Configuring the address space".

1.6.6 Starting the MX OPC Runtime Driver

Once you are finished with your device and data tag configuration, you can start the MX OPC Runtime driver by clicking the Start button (green triangle icon) on the Standard toolbar of the MX OPC Configurator. This enables client/server communication. To stop the driver, click the Stop button (red square icon) on the Standard toolbar, as shown in the figure below.



Starting and Stopping the Driver

1.6.7 Connecting to the Server Using OPC DataSpy

Introduction to OPC DataSpy

With the introduction of the OPC Foundation Plug and Play communications standard called OPC Data Access, and recently the OPC Alarm and Events Specifications, a universal diagnostics and analysis utility was needed by industry. This need is filled with OPC DataSpy.

Features of OPC DataSpy

OPC DataSpy includes the following key standard features:

- Internet OPC over TCP/IP tag browsing.
- GenBroker Monitor.
- Simple-to-use OPC test client inspection and diagnostics utility.
- Determination of whether server is OPC compliant.
- Available as a stand-alone OPC test client.
- OPC Data Access (DA) test client.
- OPC Alarm and Events (AE) test client.
- OPC Data Access troubleshooting tool.
- OPC Alarm and Events troubleshooting tool.
- OPC-compliance testing of third-party servers.
- Determination of OPC standards for OPC servers.
- OPC loading and OPC traffic analysis.

The main concept behind the OPC DataSpy is to provide an easy-to-use OPC Test Client to test, diagnose, and troubleshoot industrial applications using the OPC Foundations, OPC Data Access, and Alarm and Events specifications.

The OPC DataSpy tree control capability consists of three main parts:

1. OPC Item Browsing
2. OPC Data and Alarm Monitors
3. GenBroker Monitor

The OPC item browser mode allows you to browse for OPC-compliant Data Access and OPC Alarm and Event servers, as well as OPC Historical Data Access servers, and to provide basic information allowing users to view, test, and troubleshoot any OPC third-party servers. The OPC monitors provide real-time monitoring of OPC server data.

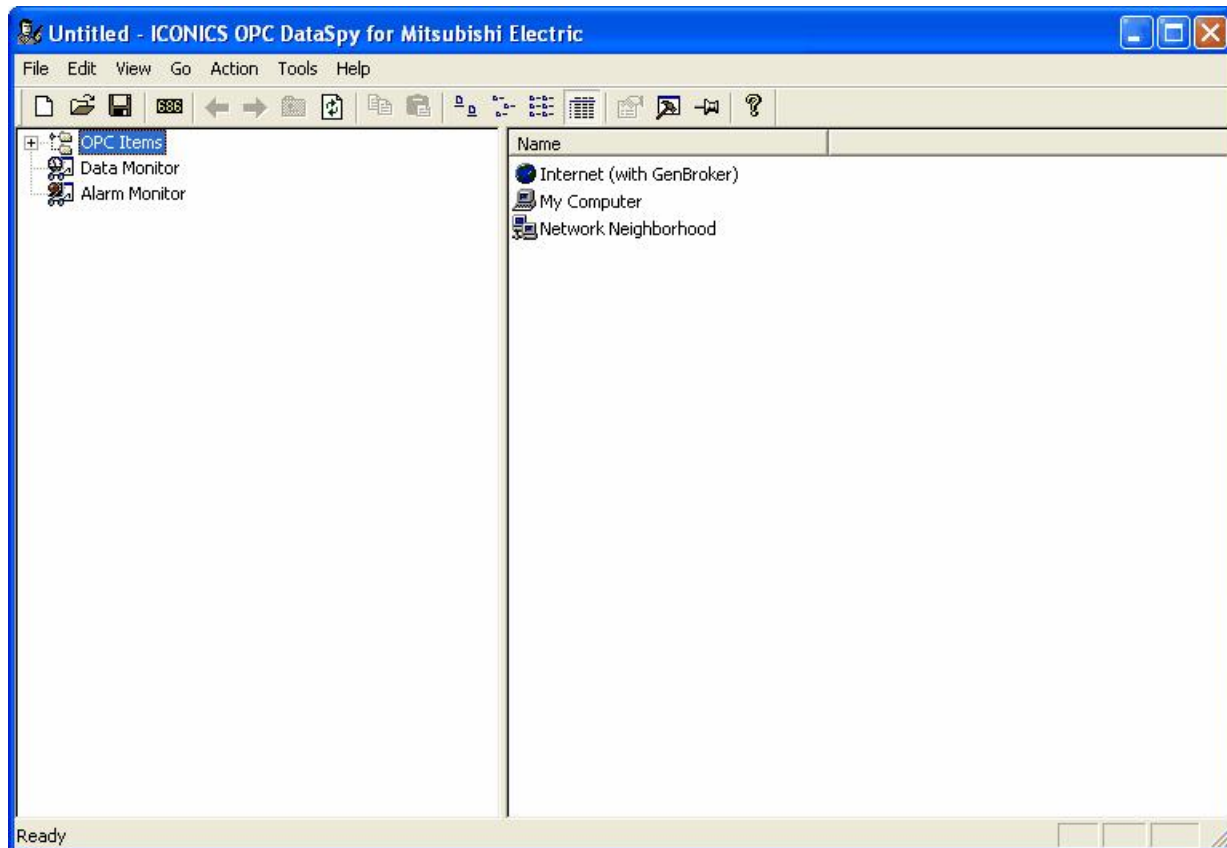
The OPC DataSpy user interface consists of the following elements:

- OPC Item browser
- OPC Data and Alarm Monitors
- Diagnostics and statistics and logging module (output window)

Once the MX OPC Runtime driver is running, you can connect to the MX OPC Server via OPC DataSpy. For this Quick Start, you will use OPC DataSpy provided with the MX OPC Server installation:

1. Open OPC DataSpy from the Windows **Start** menu by selecting **Programs > Melsoft Application > MX OPC Server 6.0 > OPC Data Spy > DataSpy.exe**. This opens OPC DataSpy, as shown in the figure below.

Note: The name of the program folder may vary depending on your local settings (e.g. language settings).



OPC DataSpy Screen

2. From the left navigation pane, expand the **"OPC Items"** item by clicking on the "[+]" symbol to the left of the icon. Expand the **"My Computer"** section then the **"OPC Data Access"** section then the **"Mitsubishi.MXOPC.6"** section.

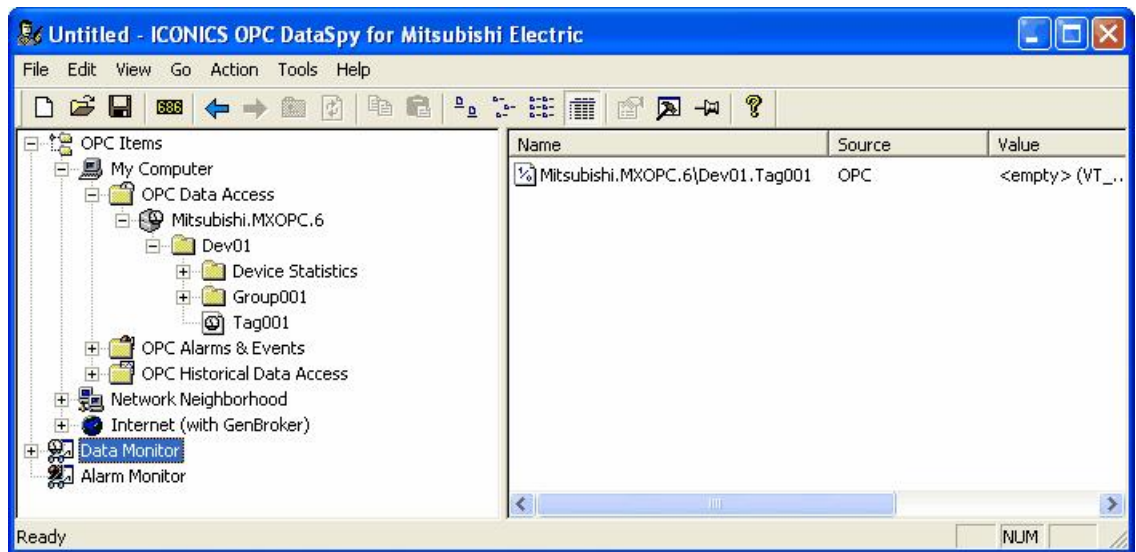
Users will then see all configured devices listed underneath **"Mitsubishi.MXOPC.6"** and can browse groups and data tags accordingly.

3. Right click on any selected tag listed beneath **"Mitsubishi.MXOPC.6"** and click on **"Monitor"**. Next, click on **"Data Monitor"** that is listed underneath OPC Items when that section is fully collapsed. In the right navigation pane, users will be able to see the values associated with selected tags.
4. If your client application does not support reading single array elements or reading a single bit within a word, you may still be able to use these features by changing the name of the item that you add.

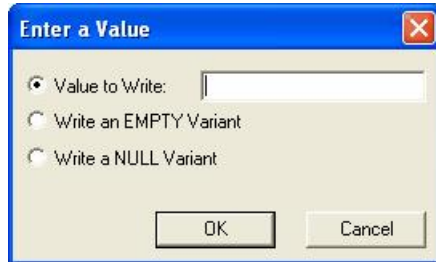
A client can address a bit within a word tag using the item syntax "tagname.bitNr" (e.g. tagname.0 for bit 0). Alternatively, define a new tag with an address such as D12.1 (bit 1 within the word at address D12, with bit numbering starting a 0 for the least significant bit) and set the type to BOOL.

A client can address a single element of an array tag using the item syntax 'arraytag[elemNr]' (e.g. arraytag[2] for element 2).

- To Write to Tags, right-click on the tag name in the right navigation pane. The "Enter a Value" dialog pops up. Users can then enter values in the text entry box.



Note: If you are writing a floating point value, the period (.) character is always used as the radix character (e.g. '123.4' not '123,4'). If you are writing to an array item, the values should be separated by commas (,).



Index

- A -

Access rights 32
Administrator 7
AE 4
Alarm and events 5
Alarm/Events 4
Alarms 32

- B -

Backup device 30
Backwards compatibility 4
Baud rate 16

- C -

Cable 16
CD-ROM 6, 7
Choose destination location 9
COM Port 16
Communication setting wizard 30
Communication settings wizard 17
Communications channels
 Creating 17
Compatibility 4
Configuration database 4
Configurator 6
 Starting 15
Configuring a new device 30
Configuring OPC server service 12
Connecting to the server with OPC DataSpy 36
Creating a serial communication channel 17
Creating an ethernet communication channel 24
Creating communications channels 17
Creating data tags 32
CSV 4
CSV file 4
Customer information 9

- D -

DA 4

Data access 4, 5
Data bits 16
Data tag properties 32
Data tags 15
 Creating 32
 Properties 32
Device layout 17
Device properties 30
Devices 15
Directory
 Installation 9
 Target 9
Downward compatibility 4
Driver
 Setting up 16

- E -

Earlier versions 4
EasySocket 10
Enable tag 32
Ethernet communication channel 24
 Creating 24

- F -

Folders 32

- G -

Generate alarms 32
Groups 32

- H -

Hard drive space 6
Historical data access 5
HMI 5

- I -

I/O address 32
I/O driver 6, 15
I/O server 4
Install as service 10
Installation 6, 7
Installation complete 11

Installing MX OPC server 6, 7
Introduction 4

- M -

MDB 4
MDB file 4
Memory 6
MX Component 5, 10
MX OPC Configurator 6, 15
MX OPC Runtime 5, 15, 35
MX OPC Server 4
MX Runtime 4, 15
MX Transfer Setup dialog 17
MXChange server 10
MXConfigurator.mdb 15

- N -

New data tag 32
New MX Device 17

- O -

OLE for process control 5
OPC 4, 5
OPC architecture 5
OPC client 4
OPC Data Access 4
OPC DataSpy 14, 36
Organisation 9

- P -

Parity 16
PC side I/F 17
PLC 5
PLC side I/F 17
Previous versions 4
Primary device 30
Process control 4, 5
Process hardware 16
Processor 6

- Q -

Quick start 14

QuickFail 5

- R -

Ready to install 10
Restart computer 11
Runtime 6, 35

- S -

Serial communication channel 17
 Creating 17
Serial number 9
Service 6, 10, 12
Service installation 10
Setting up the driver 16
Software licence agreement 8
Start button 35
Start menu 15
Starting the driver 35
Starting the MX OPC configurator 15
Starting the MX OPC Runtime Driver 35
Stop bits 16
Stop button 35
Stopping the driver 35
Stopping the MX OPC Runtime Driver 35
System requirements 6

- T -

Target directory 9
Testing 36
Transfer setup 17

- U -

UNICODE 6
Upgrade 4
User account control 7
User name 9

- V -

Versions
 Previous 4
Video card 6
Vista 7

- W -

- Welcome screen 8
- Windows 6
- Windows NT service 10
- Windows Vista 7
- Wizards
 - Communication settings 17

- X -

- XML 4
- XML data access 4

Microsoft, Windows, Windows NT, Windows XP and Windows Vista are registered trademarks of Microsoft Corporation in the United States and other countries.
Pentium is a registered trademark of Intel Corporation in the United States and other countries.
Other company and product names herein are either trademarks or registered trademarks of their respective owners.

MX OPC Configurator

Quick Start Guide



Specifications subject to change without notice.