

# MITSUBISHI

## GT16 Protective Sheet User's Manual

GT16-90PSCB GT16-90PSCW  
 GT16-90PSGB GT16-90PSGW  
 GT16-80PSCB GT16-80PSCW  
 GT16-80PSGB GT16-80PSGW  
 GT16-70PSCB GT16-70PSCW  
 GT16-70PSGB GT16-70PSGW  
 GT16-60PSCB GT16-60PSCW  
 GT16-60PSGB GT16-60PSGW  
 GT16-50PSCB GT16-50PSCW  
 GT16-50PSGB GT16-50PSGW

Thank you for purchasing the GOT1000 Series.

Prior to use, please read both this manual and detailed manual thoroughly to fully understand the product.

MODEL	GT16-PS-U
MODEL CODE	1D7M81
IB(NA)-0800426-C(1101)MEE	

GRAPHIC OPERATION TERMINAL  
**GOT1000**

### SAFETY PRECAUTIONS

(Always read these precautions before using this equipment.)

Before using this product, please read this manual and the relevant manuals introduced in this manual carefully and pay full attention to safety to handle the product correctly.

The precautions given in this manual are concerned with this product.

In this manual, the safety precautions are ranked as "DANGER" and "CAUTION".

- DANGER** Indicates that incorrect handling may cause hazardous conditions, resulting in death or severe injury.
- CAUTION** Indicates that incorrect handling may cause hazardous conditions, resulting in medium or slight personal injury or physical damage.

Note that the CAUTION level may lead to a serious accident according to the circumstances. Always follow the precautions of both levels because they are important to personal safety. Please save this manual to make it accessible when required and always forward it to the end user.

### [INSTALLATION PRECAUTIONS]

#### CAUTION

- When attaching the protective sheet onto the GOT display section, make sure to fit the protective sheet onto the section closely without leaving any air between them. Failure to do so may cause a malfunction.
- After attaching the protective sheet, remove the protective film. When the user continues using the GOT with the protective film, the film may not be removed.

### [STARTUP AND MAINTENANCE PRECAUTIONS]

#### CAUTION

- Daily check the protective sheet with eyes. When you find extreme dirt or scratches on the surface, immediately replace it with new one. Using the protective sheet of decreased visibility may cause a malfunction.

### [DISPOSAL PRECAUTIONS]

#### CAUTION

- Dispose of this product as industrial waste.

### Manuals

The following shows manuals relevant to this product.

Manual name	Manual number (Model code)
GT16 User's Manual (Hardware) (Sold separately)	SH-080928ENG (1D7MD3)

### Relevant Manuals

For relevant manuals, refer to the PDF manuals stored in the CD-ROM for the drawing software used.

© 2008 MITSUBISHI ELECTRIC CORPORATION

### Packing List

After unpacking the box, check that the following products are included.

Model	Product	Quantity
GT16-90PSCB GT16-90PSGB GT16-90PSCW GT16-90PSGW GT16-80PSCB GT16-80PSGB GT16-80PSCW GT16-80PSGW GT16-70PSCB GT16-70PSGB GT16-70PSCW GT16-70PSGW GT16-60PSCB GT16-60PSGB GT16-60PSCW GT16-60PSGW GT16-50PSCB GT16-50PSGB GT16-50PSCW GT16-50PSGW	Protective sheet	5

## 1. OVERVIEW

This User's Manual describes GT16 protective sheet (hereinafter referred to as the protective sheet). The following protective sheets are available. For the applicable GOTs, refer to GT16 User's Manual (Hardware).

Product	Model	Description
Protective sheet	GT16-90PSCB	15" protective sheet Clear
	GT16-90PSGB	15" protective sheet Antiglare
	GT16-90PSCW *1	15" protective sheet Clear (Frame: White)
	GT16-90PSGW *1	15" protective sheet Antiglare (Frame: White)
	GT16-80PSCB	12.1" protective sheet Clear
	GT16-80PSGB	12.1" protective sheet Antiglare
	GT16-80PSCW *1	12.1" protective sheet Clear (Frame: White)
	GT16-80PSGW *1	12.1" protective sheet Antiglare (Frame: White)
	GT16-70PSCB	10.4" protective sheet Clear
	GT16-70PSGB	10.4" protective sheet Antiglare
	GT16-70PSCW *1	10.4" protective sheet Clear (Frame: White)
	GT16-70PSGW *1	10.4" protective sheet Antiglare (Frame: White)
	GT16-60PSCB	8.4" protective sheet Clear
	GT16-60PSGB	8.4" protective sheet Antiglare
	GT16-60PSCW *1	8.4" protective sheet Clear (Frame: White)
	GT16-60PSGW *1	8.4" protective sheet Antiglare (Frame: White)
	GT16-50PSCB	5.7" protective sheet Clear
GT16-50PSGB	5.7" protective sheet Antiglare	
GT16-50PSCW *1	5.7" protective sheet Clear (Frame: White)	
GT16-50PSGW *1	5.7" protective sheet Antiglare (Frame: White)	

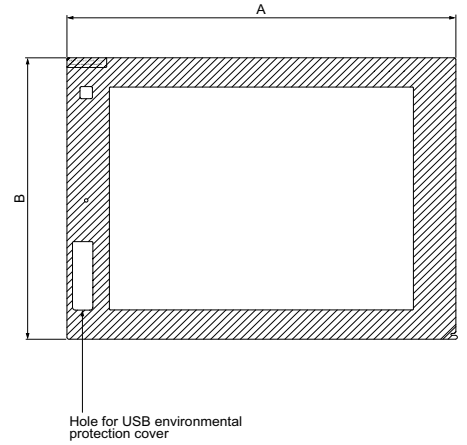
\*1 For the white frame (other than the display section), use the model.

Use the protective sheet to protect the display section surface from scratches and dirt when operating the touch keys on the GOT display section.

Select a clear protective sheet for the display intensity, or select an antiglare protective sheet for antireflection.

## 2. PART NAMES AND EXTERNAL DIMENSIONS

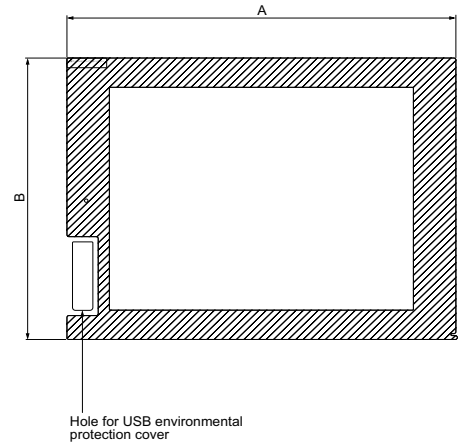
(1) 15"/12.1" protective sheet



Item	A	B
15" Protective sheet	391 (15.4)	290 (11.4)
12.1" Protective sheet	310 (12.2)	236 (9.3)

Unit: mm (inch)

(2) 10.4"/8.4"/5.7" protective sheet

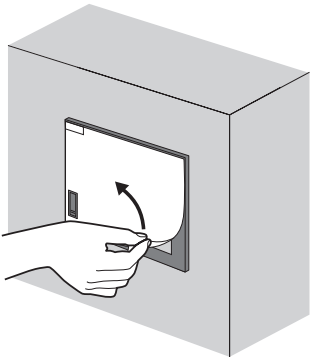


Item	A	B
10.4" Protective sheet	297 (11.7)	208 (8.2)
8.4" Protective sheet	235 (9.3)	184 (7.3)
5.7" Protective sheet	163 (6.4)	131 (5.2)

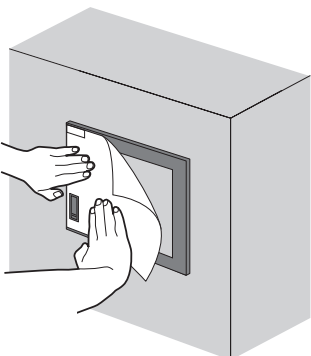
Unit: mm (inch)

## 3. INSTALLATION PROCEDURE

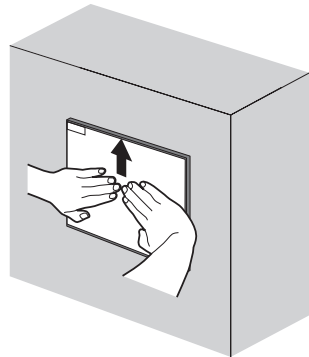
1) If the old protective sheet is attached, remove the sheet from the lower right of the GOT, and clean the GOT surface. (Peel off the sheet slowly.)



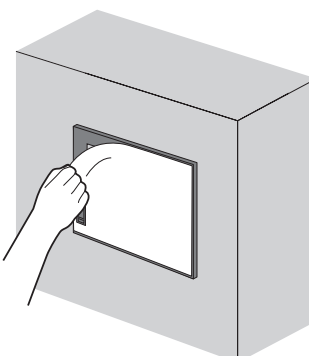
2) Peel the release paper off the back of the new protective sheet. With the protective film left on the sheet surface, attach the sheet on the GOT so that the USB environmental protection cover hole is just on the USB environmental protection cover of the GOT.



3) When attaching the protective sheet, make sure to fit the sheet on the GOT without leaving any clearance between the sheet and the GOT.



4) Remove the protective film from the protective sheet. When the user continues using the GOT with the protective film, the film may not be removed.



### Warranty

Mitsubishi will not be held liable for damage caused by factors found not to be the cause of Mitsubishi; machine damage or lost profits caused by faults in the Mitsubishi products; damage, secondary damage, accident compensation caused by special factors unpredictable by Mitsubishi; damages to products other than Mitsubishi products; and to other duties.

### For safe use

- This product has been manufactured as a general-purpose part for general industries, and has not been designed or manufactured to be incorporated in a device or system used in purposes related to human life.
- Before using the product for special purposes such as nuclear power, electric power, aerospace, medicine or passenger movement vehicles, consult with Mitsubishi.
- This product has been manufactured under strict quality control. However, when installing the product where major accidents or losses could occur if the product fails, install appropriate backup or failsafe functions in the system.

Country/Region	Sales office/Tel
U.S.A	Mitsubishi Electric Automation Inc. 500 Corporate Woods Parkway Vernon Hills, IL 60061, U.S.A. Tel : +1-847-478-2100
Brazil	MELCO-TEC Rep. Com.e Assessoria Tecnica Ltda. Rua Correia Dias, 184, Edificio Paraiso Trade Center-8 andar Paraiso, Sao Paulo, SP Brazil Tel : +55-11-5908-8331
Germany	Mitsubishi Electric Europe B.V. German Branch Golthaer Strasse 8 D-40880 Ratingen, GERMANY Tel : +49-102-486-0
U.K	Mitsubishi Electric Europe B.V. UK Branch Travellers Lane, Hatfield, Hertfordshire., AL10 8XB, U.K. Tel : +44-1707-276100
Italy	Mitsubishi Electric Europe B.V. Italian Branch Centro Dir. Colleoni, Pal. Perseo-Ingr.2 Via Paracelso 12, I-20041 Agrate Brianza, Milano, Italy Tel : +39-039-60531
Spain	Mitsubishi Electric Europe B.V. Spanish Branch Carretera de Rubi 176-80, E-08190 Sant Cugat del Valles, Barcelona, Spain Tel : +34-93-565-3131
France	Mitsubishi Electric Europe B.V. French Branch 25, Boulevard des Bouvets, F-92741 Nanterre Cedex, France TEL : +33-1-5568-5568
South Africa	Circuit Breaker Industries Ltd. Private Bag 2016, ZA-1600 Isando, South Africa Tel : +27-11-828-2000
Hong Kong	Mitsubishi Electric Automation (Hong Kong) Ltd. 10th Floor, Manulife Tower, 169 Electric Road, North Point, Hong Kong Tel : +852-2887-8870
China	Mitsubishi Electric Automation (China) Ltd. 4/F Zhi Fu Plaza, No.80 Xin Chang Road, Shanghai 200003, China Tel : +86-21-6120-0808
Taiwan	Setsuyo Enterprise Co., Ltd. 6F No.105 Wu-Kung 3rd.Rd, Wu-Ku Hsiang, Taipei Hsine, Taiwan Tel : +886-2-2299-2499
Korea	Mitsubishi Electric Automation Korea Co., Ltd. 1480-6, Gayang-dong, Gangseo-ku Seoul 157-200, Korea Tel : +82-2-3660-9552
Singapore	Mitsubishi Electric Asia Pte. Ltd. 307 Alexandra Road #05-01/02, Mitsubishi Electric Building, Singapore 159943 Tel : +65-6470-2460
Thailand	Mitsubishi Electric Automation (Thailand) Co., Ltd. Bang-Chan Industrial Estate No.111 Moo 4, Serithai Rd, T.Kannayao, A.Kannayao, Bangkok 10230 Thailand Tel : +65-2-517-1328
Indonesia	P.T. Autoteknindo Sumber Makmur Muara Karang Selatan, Block A/Utara No.1 Kav. No.11 Kawasan Industri Pergudangan Jakarta - Utara 14440, P.O.Box 5045 Jakarta, 11050 Indonesia Tel : +62-21-6830833
India	Messung Systems Pvt. Ltd. Electronic Sadan NO-III Unit No15, M.I.D.C Bhosari, Pune-411026, India Tel : +91-20-2712-3130
Australia	Mitsubishi Electric Australia Pty. Ltd. 348 Victoria Road, Rydalmere, N.S.W 2116, Australia Tel : +61-2-9684-7777

MITSUBISHI ELECTRIC CORPORATION  
 HEAD OFFICE: TOKYO BUILDING, 2-7-3 MARUNOUCHI, CHYODA-KU, TOKYO 100-8310, JAPAN  
 NAGOYA WORKS: 1-14, YADA-MINAMI 5-CHOME, HIGASHI-KU, NAGOYA, JAPAN

When exported from Japan, this manual does not require application to the Ministry of Economy, Trade and Industry for service transaction permission.

Specifications subject to change without notice.  
 Printed in Japan.